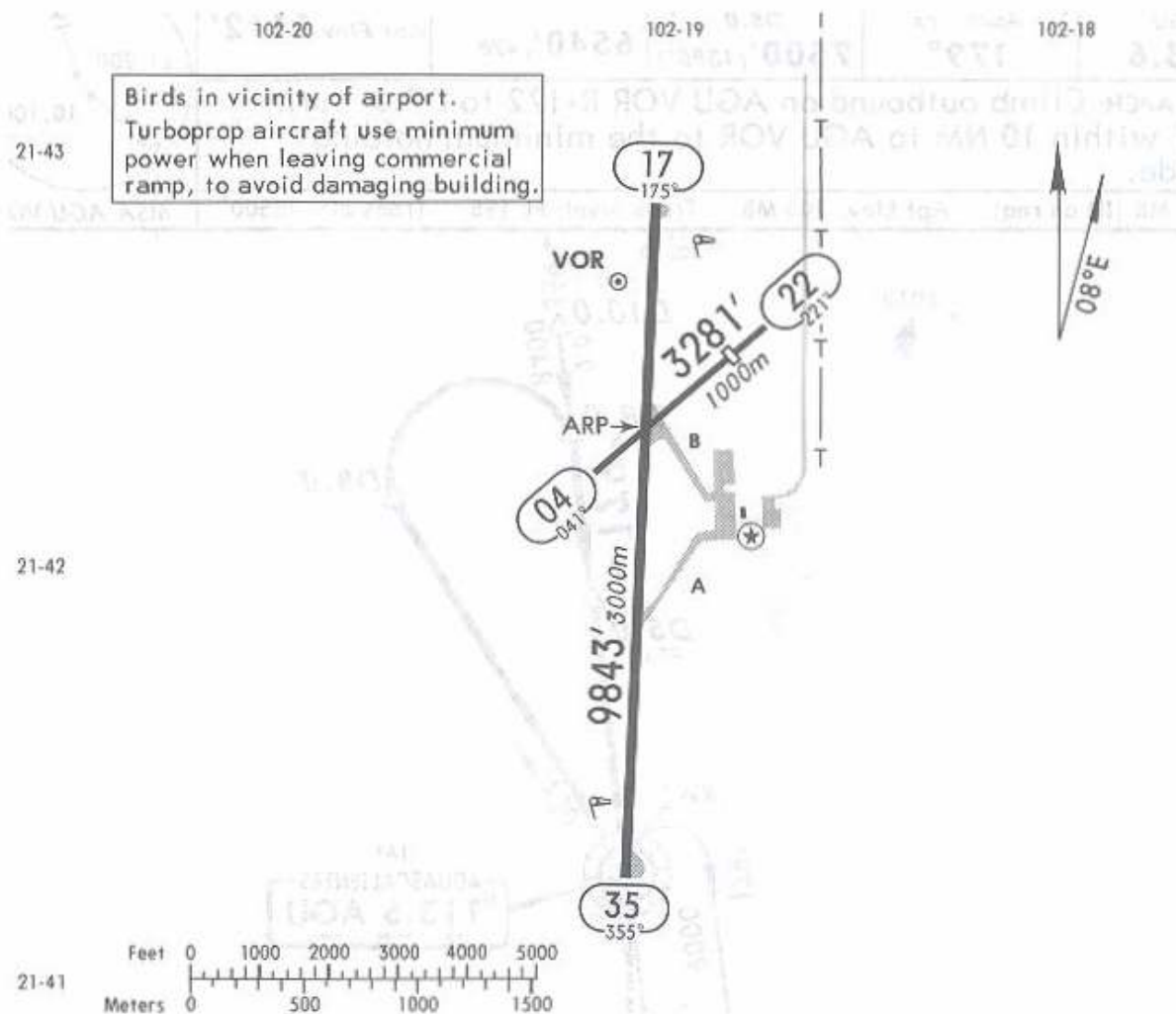


*AGUASCALIENTES Tower 118.6

22 AUG 08

Eff 28 Aug



ADDITIONAL RUNWAY INFORMATION

RWY		USABLE LENGTHS			WIDTH
		Threshold	Glide Slope	TAKE-OFF	
04	VFR only			2625' 800m	98'
22		2625' 800m			30m
17	HIRL PAPI-L (angle 3.0°)				148'
35					45m

NOT TO BE USED FOR ACTUAL NAVIGATION

Apt Elev
6112'

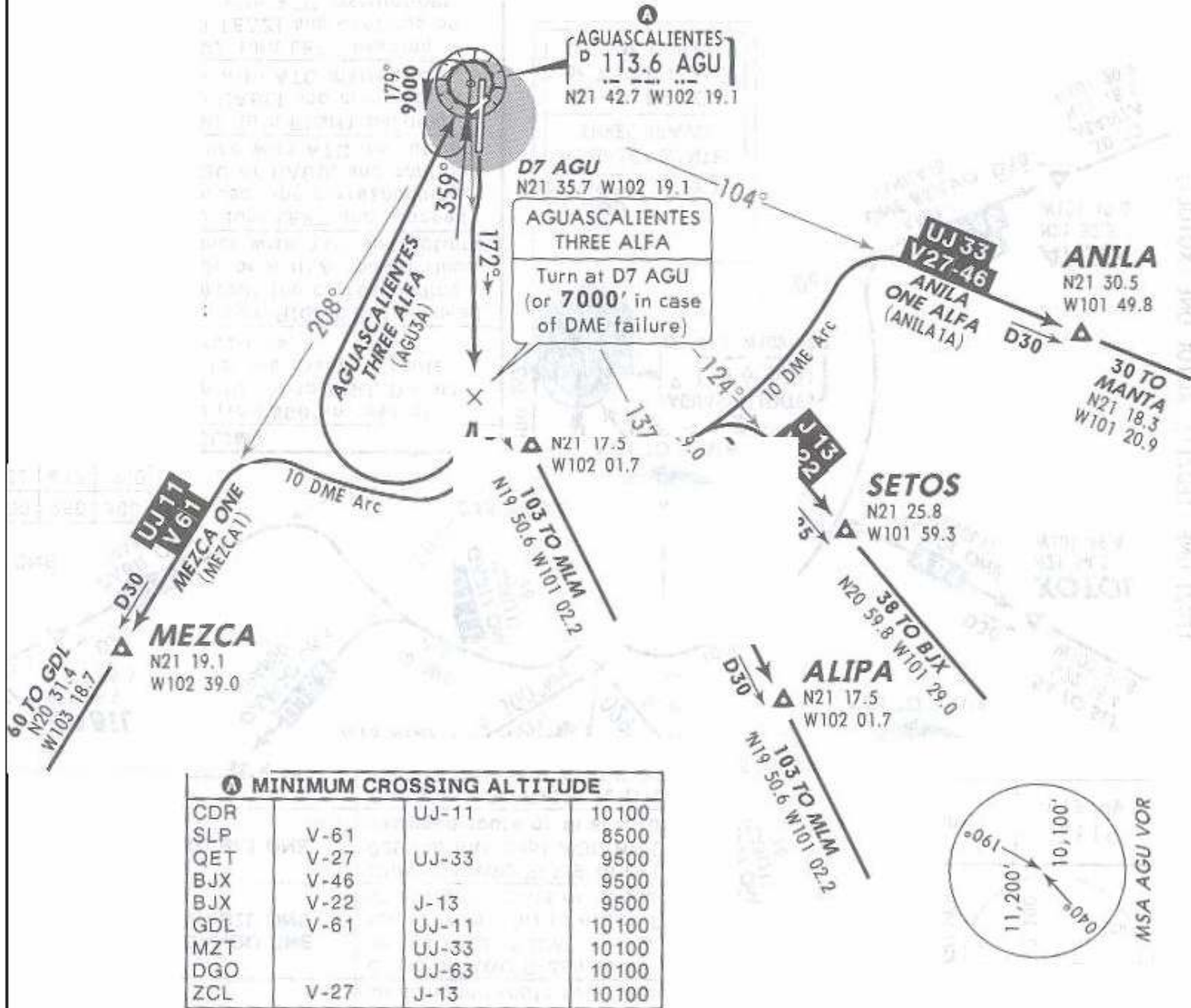
Trans level: FL195 Trans alt: 18500'

22 AUG 08

Eff 28 Aug

DEPARTURES RWY 17

AGUASCALIENTES THREE ALFA (AGU3A), ALIPA ONE (ALIPA1),
ANILA ONE ALFA (ANILA1A), MEZCA ONE (MEZCA1), SETOS ONE (SETOS1)



SID	INITIAL CLIMB
AGUASCALIENTES THREE ALFA	Climb on AGU R-172 to D7 AGU (to 7000' in case of DME failure), turn RIGHT within 10 NM to AGU. Depart AGU at the established MCA A for the assigned route or in accordance with ATC instructions.
ALIPA ONE ANILA ONE ALFA SETOS ONE	Climb on AGU R-172 to D7 AGU, turn LEFT and proceed on the AGU 10 DME Arc to intercept the corresponding radial from AGU to either ALIPA, ANILA or SETOS and continue on assigned route or in accordance with ATC instructions.
MEZCA ONE	Climb on AGU R-172 to D7 AGU, turn RIGHT and proceed on the AGU 10 DME Arc to intercept AGU R-208 to MEZCA and continue on assigned route or in accordance with ATC instructions.

NOT TO BE USED FOR ACTUAL NAVIGATION

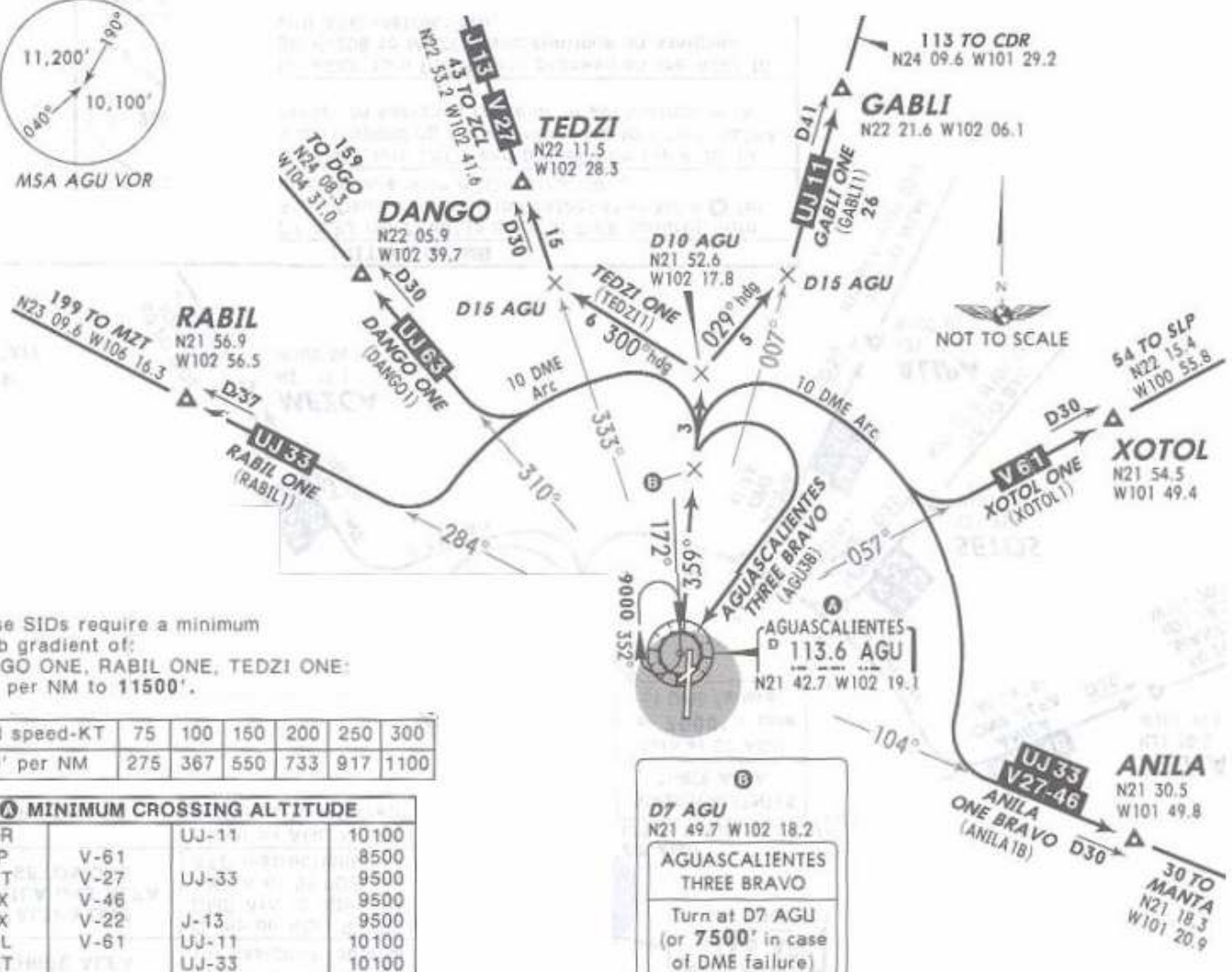
Apt Elev
6112'

Trans level: FL195 Trans alt: 18500'

Eff 28 Aug

DEPARTURES RWY 35

AGUASCALIENTES THREE BRAVO (AGU3B), ANILA ONE BRAVO (ANILA1B),
DANGO ONE (DANGO1), GABLI ONE (GABLI1), RABIL ONE (RABIL1),
TEDZI ONE (TEDZI1), XOTOL ONE (XOTOL1)



These SIDs require a minimum climb gradient of:
DANGO ONE, RABIL ONE, TEDZI ONE:
220' per NM to 11500'.

Gnd speed-KT	75	100	150	200	250	300
220' per NM	275	367	550	733	917	1100

MINIMUM CROSSING ALTITUDE			
CDR		UJ-11	10100
SLP	V-61		8500
QET	V-27	UJ-33	9500
BJX	V-46		9500
BJX	V-22	J-13	9500
GDL	V-61	UJ-11	10100
MZT		UJ-33	10100
DGO		UJ-63	10100
ZCL	V-27	J-13	10100

D7 AGU
N21 49.7 W102 18.2

AGUASCALIENTES THREE BRAVO

Turn at D7 AGU (or 7500' in case of DME failure)

SID	INITIAL CLIMB
AGUASCALIENTES THREE BRAVO	Climb on AGU R-359 to D7 AGU (to 7500' in case of DME failure), turn RIGHT within 10 NM to AGU. Depart AGU at the MCA established for the assigned route or in accordance with ATC instructions.
ANILA ONE BRAVO XOTOL ONE	Climb on AGU R-359 to D7 AGU, turn RIGHT and proceed on the AGU 10 DME Arc to intercept the corresponding radial from AGU to either XOTOL or ANILA and continue on assigned route or in accordance with ATC instructions.
DANGO ONE RABIL ONE	Climb on AGU R-359 to D7 AGU, turn LEFT and proceed on the AGU 10 DME Arc to intercept the corresponding radial from AGU to either DANGO or RABIL and continue on assigned route or in accordance with ATC instructions.
GABLI ONE	Climb on AGU R-359 to D10 AGU, turn RIGHT heading 029° to intercept AGU R-007 to GABLI and continue on assigned route or in accordance with ATC instructions.
TEDZI ONE	Climb on AGU R-359 to D10 AGU, turn LEFT heading 300° to intercept AGU R-333 to TEDZI and continue on assigned route or in accordance with ATC instructions.

NOT TO BE USED FOR ACTUAL NAVIGATION

*LEON Approach

*AGUASCALIENTES Tower

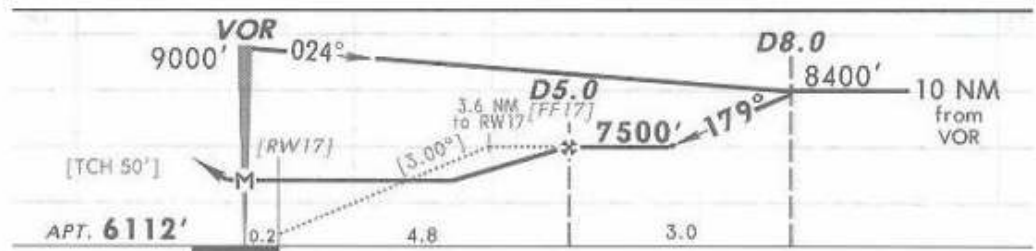
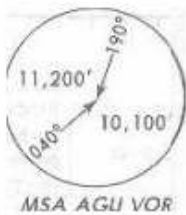
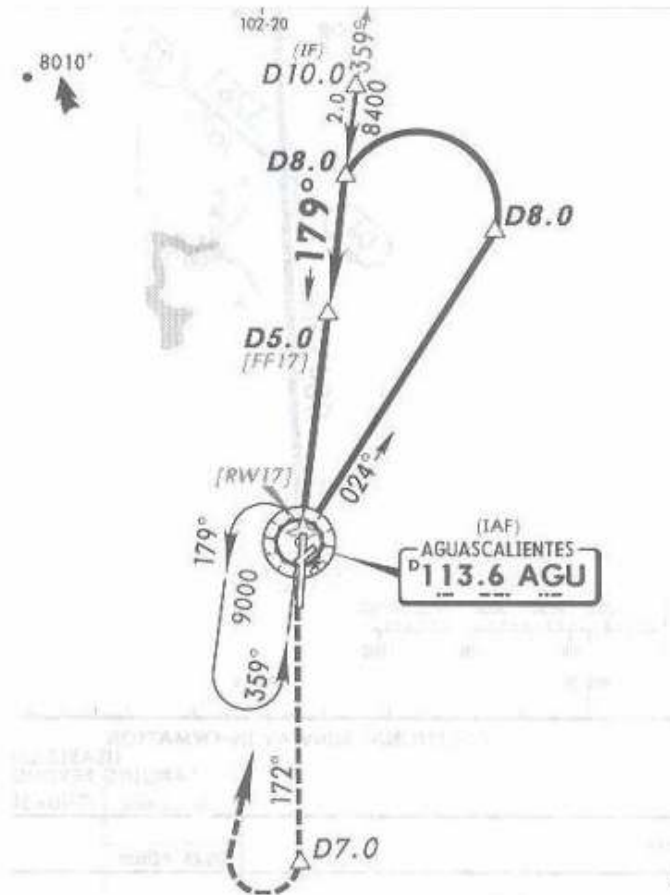
22 AUG-08

119.05

118.6

Eff: 28 Aug

VOR AGU 113.6	Final Apch Crs 179°	Minimum Alt D5.0 7500' (1388')	MDA(H) 6540' (428')	Apt Elev 6112'
----------------------------	----------------------------------	---	-------------------------------	-----------------------



MISSED APCH: Climb outbound on AGU VOR R-172 to D7.0, turn **RIGHT** within 10 NM to AGU VOR to the minimum holding altitude.

Alt Set: MB (IN on req) Apt Elev: 205 MB Trans level: FL 195 Trans alt: 18500'

NOT TO BE USED FOR ACTUAL NAVIGATION

*LEON Approach

*AGUASCALIENTES Tower

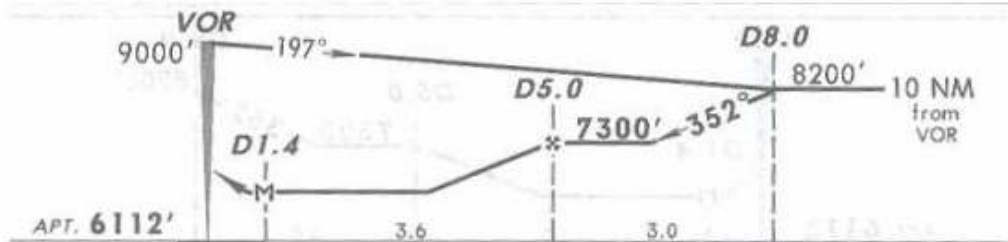
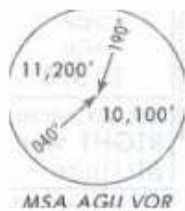
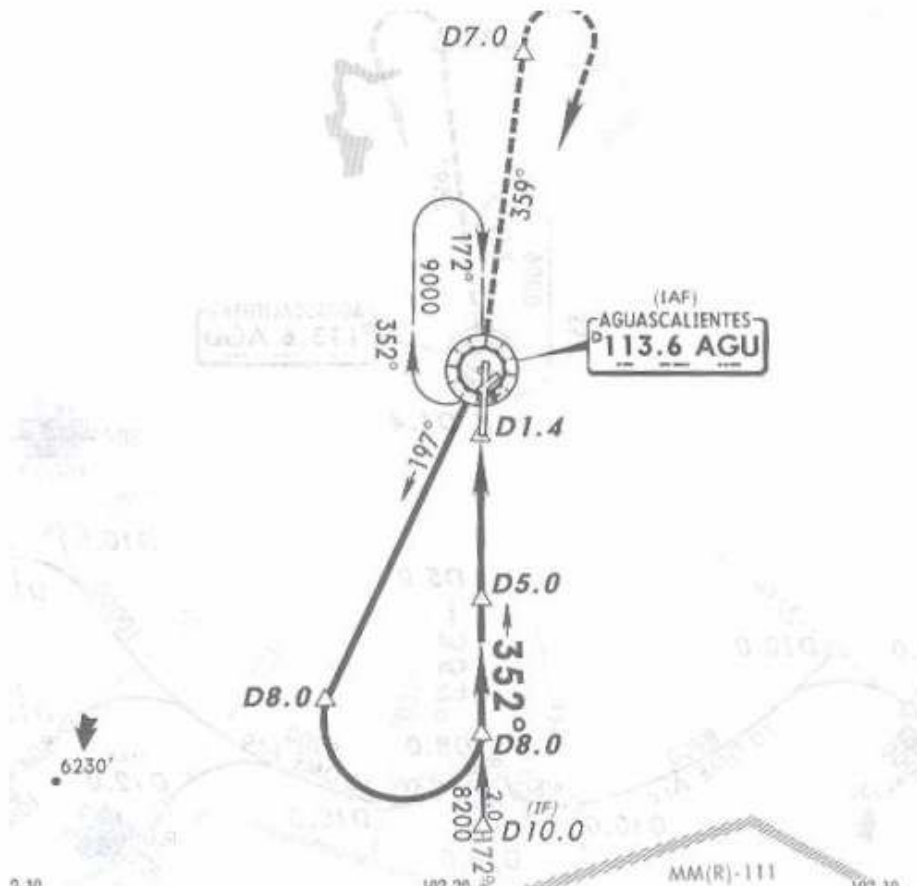
22 AUG 08

119.05

118.6

Eff: 28 Aug

VOR AGU	Final Apch Crs	Minimum Alt D5.0	MDA(H)	Apt Elev
113.6	352°	7300' (1188')	6540' (428')	6112'



MISSED APCH: Climb outbound on AGU VOR R-359 to D7.0, turn RIGHT within 10 NM to AGU VOR to the minimum holding altitude.

Alt Set: MB (IN on req) Apt Elev: 205 MB Trans level: FL 195 Trans alt: 18500'

*LEON Approach

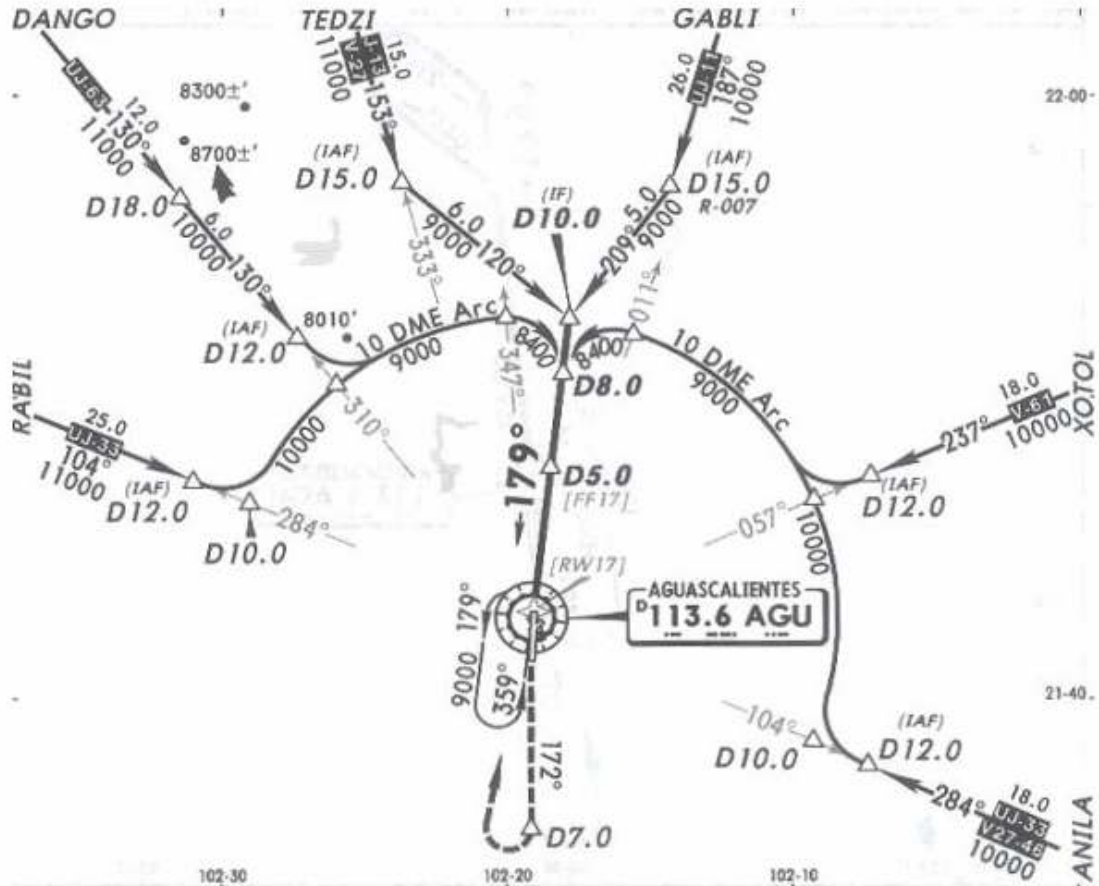
*AGUASCALIENTES Tower

9 MAR 07

119.05

118.6

VOR AGU 113.6	Final Apch Crs 179°	Minimum Alt D5.0 7500' (1388')	MDA(H) 6540' (428')	Apt Elev 6112'
----------------------------	----------------------------------	---	-------------------------------	-----------------------



Alt Set: MB (IN on req) Apt Elev: 205 MB Trans level: FL 195 Trans alt: 18500'

NOT TO BE USED FOR ACTUAL NAVIGATION

*LEON Approach

*AGUASCALIENTES Tower

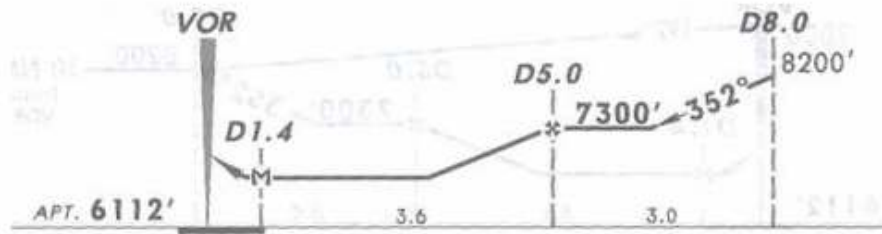
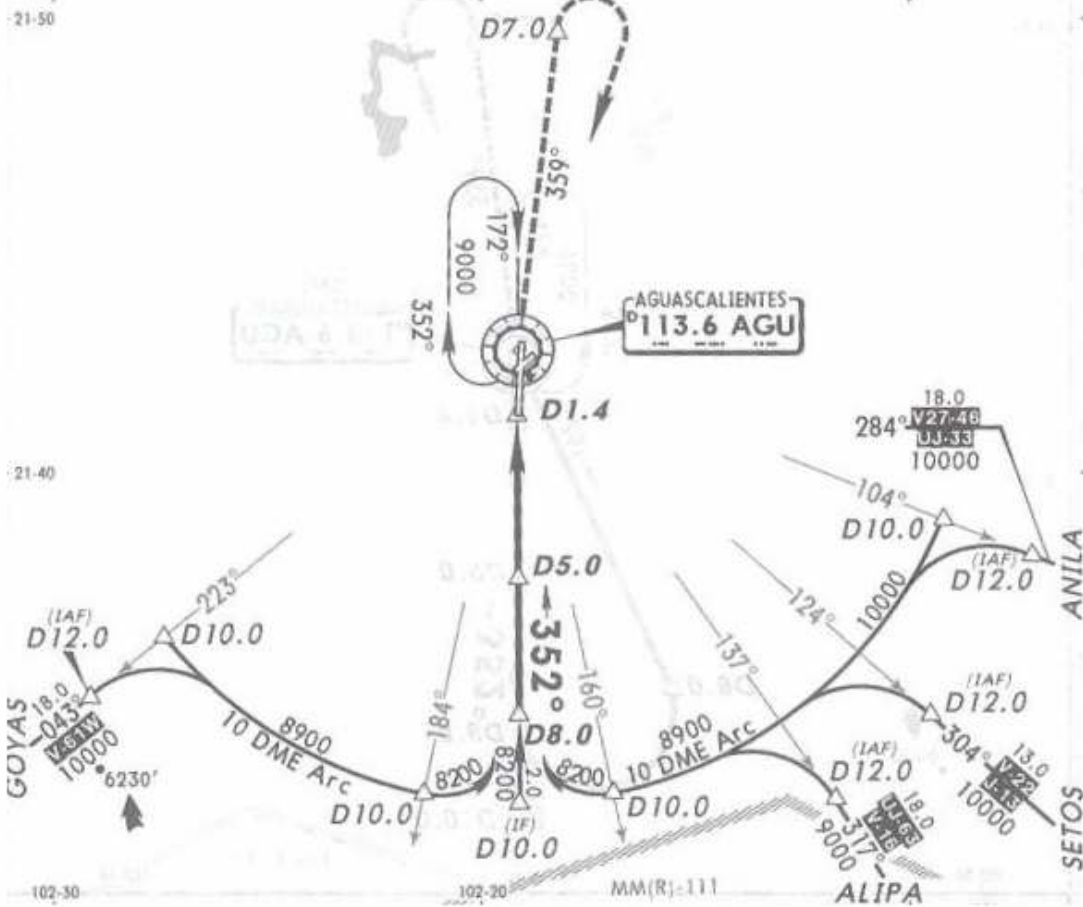
22 AUG 08

119.05

20118.6

Eff 28 Aug

VOR AGU 113.6	Final Apch Crs 352°	Minimum Alt DS.0 7300' (1188')	MDA(H) 6540' (428')	Apt Elev 6112'
----------------------------	----------------------------------	---	-------------------------------	-----------------------



MISSED APCH: Climb outbound on AGU VOR R-359 to D7.0, turn RIGHT within 10 NM to AGU VOR to the minimum holding altitude.

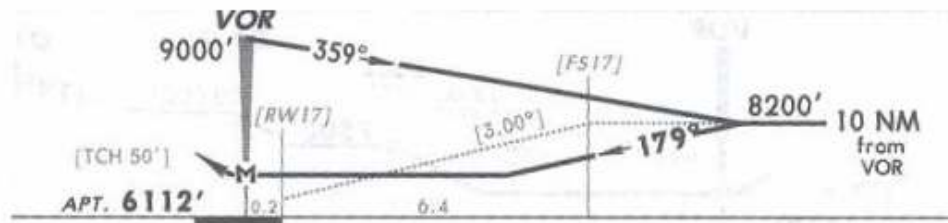
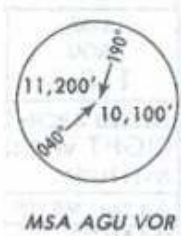
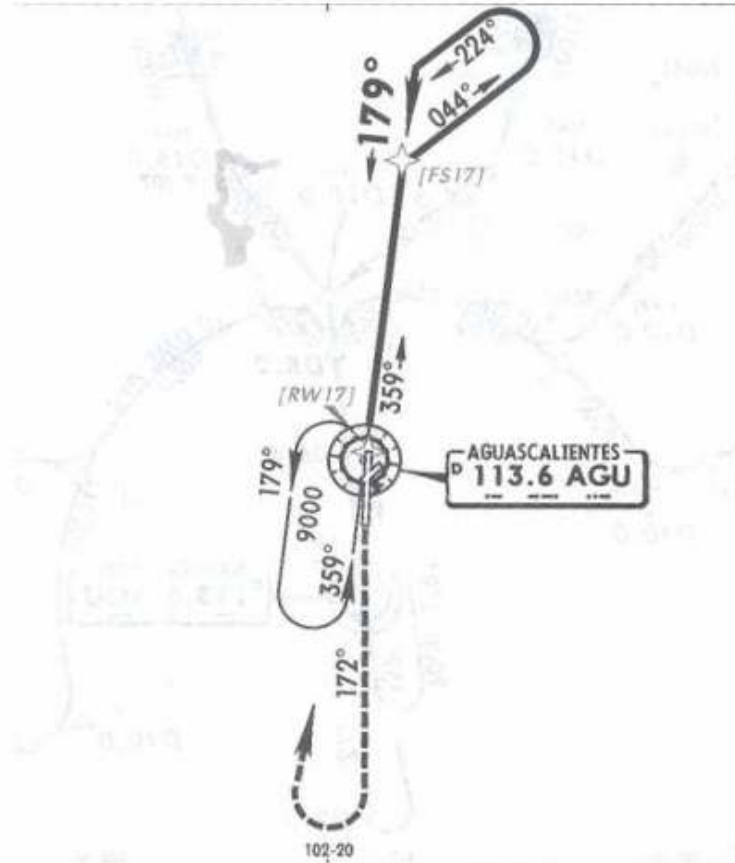
Alt Set: MB (IN on req) Apt Elev: 205 MB Trans level: FL 195 Trans alt: 18500'

*LEON Approach
119.05

*AGUASCALIENTES Tower
118.6

9 MAR 07

VOR AGU 113.6	Final Apch Crs 179°	No FAF	MDA(H) 6740' (628')	Apt Elev 6112'
---------------------	---------------------------	--------	------------------------	----------------



MISSED APCH: Climb outbound on AGU VOR R-172, turn RIGHT within 10 NM to AGU VOR to the minimum holding altitude.

	MAX TIME TO TURN							
	Gnd speed-Kts	80	100	120	140	160	180	200
7 NM to turn	5:15	4:12	3:30	3:00	2:38	2:20	2:06	

Alt Set: MB (IN on req) Apt Elev: 205 MB Trans level: FL 195 Trans alt: 18500'

NOT TO BE USED FOR ACTUAL NAVIGATION

*LEON Approach

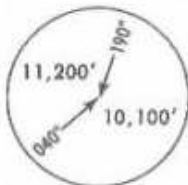
*AGUASCALIENTES Tower

26 JAN 07

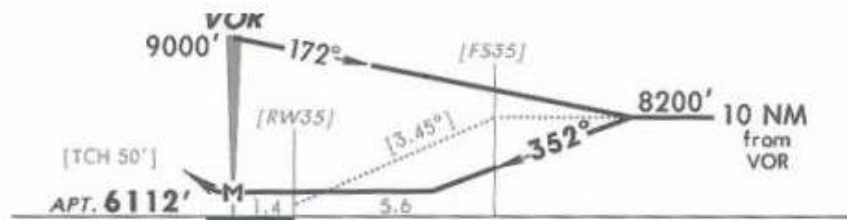
119.05

118.6

VOR AGU 113.6	Final Apch Crs 352°	No FAF	MDA(H) 6700' (588')	Apt Elev 6112'
----------------------------	----------------------------------	--------	-------------------------------	-----------------------



MSA AGU VOR



MISSED APCH: Climb outbound on AGU VOR R-359, turn RIGHT within 10 NM to AGU VOR to the minimum holding altitude.

Gnd speed-Kts	MAX TIME TO TURN						
	80	100	120	140	160	180	200
7 NM to turn	5:15	4:12	3:30	3:00	2:38	2:20	2:06

Alt Set: MB (IN on req) Apt Elev: 205 MB Trans level: FL 195 Trans alt: 18500'
1. VGSI and descent angles not coincident.

NOT TO BE USED FOR ACTUAL NAVIGATION