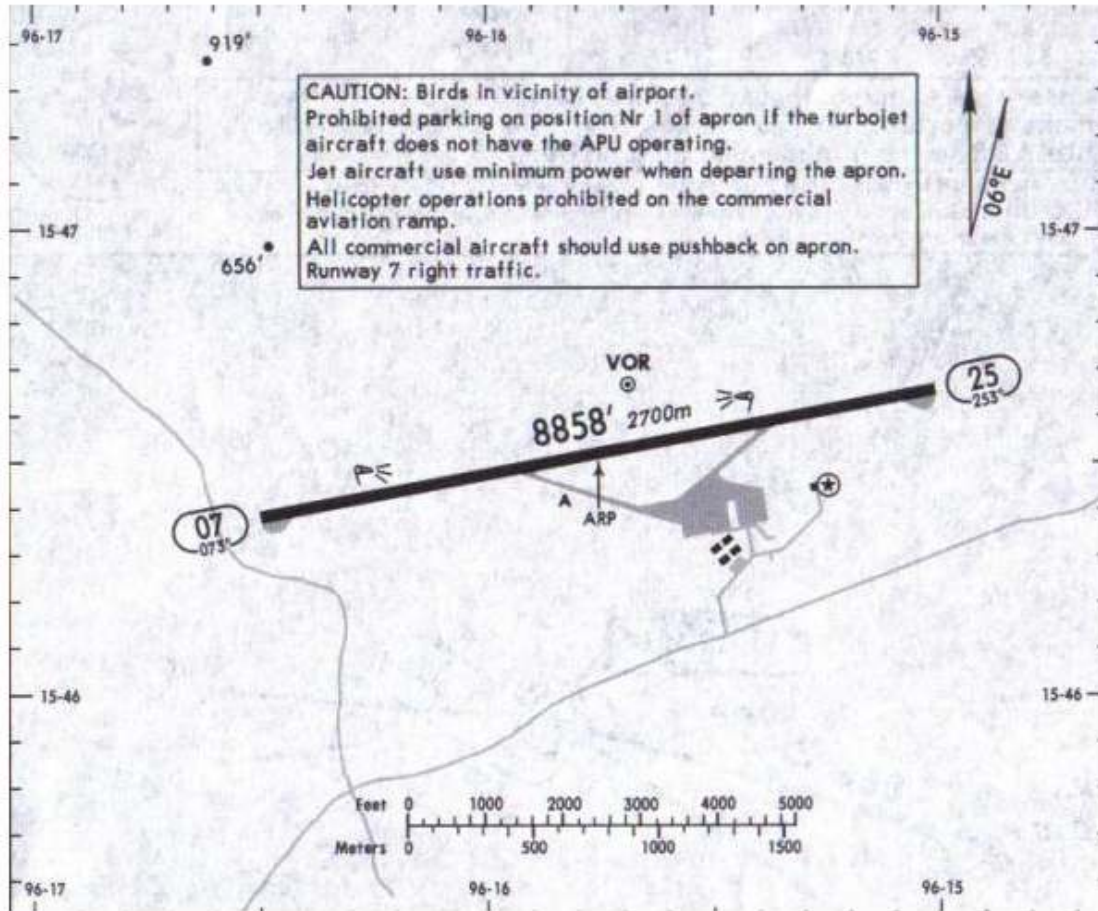


5 MAY 06

Apt Elev **464'**
N15 46.5 W096 15.8

*BAHIAS DE HUATULCO Tower **118.0**



ADDITIONAL RUNWAY INFORMATION					
RWY		USABLE LENGTHS			WIDTH
		LANDING BEYOND Threshold	Glide Slope	TAKE-OFF	
07 25	HIRL PAPI-L (angle 3.0°)				148' 45m

		TAKE-OFF		FOR FILING AS ALTERNATE	
		Rwy 25	Rwy 07		
1 & 2 Eng				A	1500-3
3 & 4 Eng	300-1/2	500-1 1/2	B		
			C		
			D		

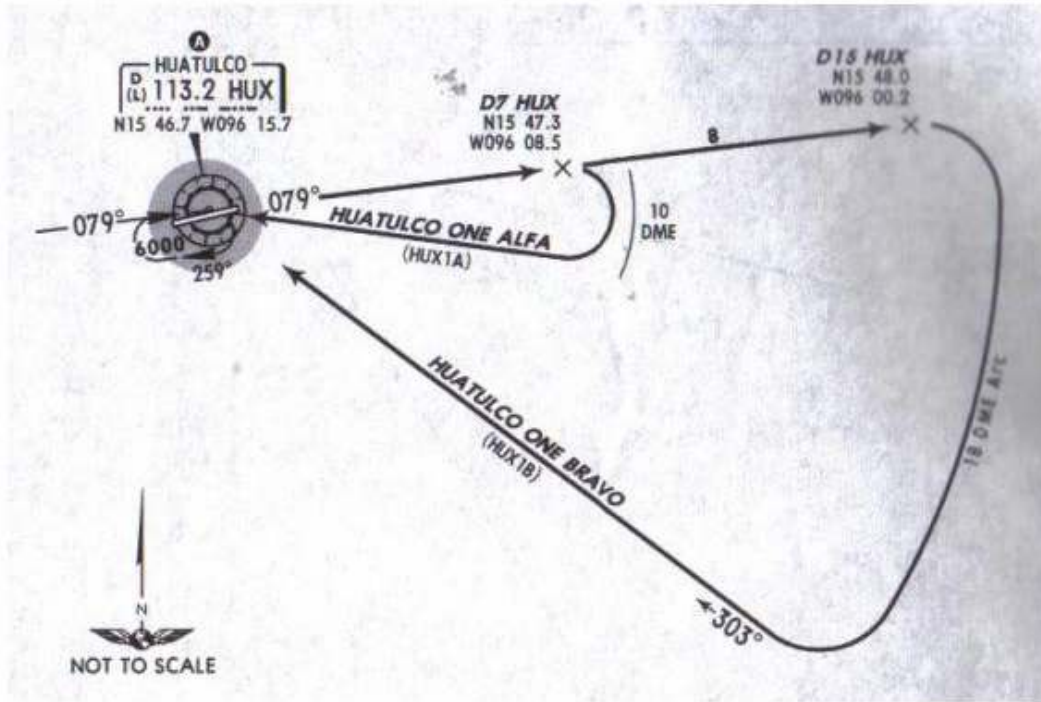
NOT TO BE USED FOR ACTUAL NAVIGATION

5 MAY 06

Apr Elev
464'

Trans level: FL 195 Trans alt: 18500'

DEPARTURES RUNWAY 07
HUATULCO ONE ALFA (HUX1A), HUATULCO ONE BRAVO (HUX1B)



A MINIMUM CROSSING ALTITUDE			
OAX	V-27E	UJ-39, UJ-70	12000
OAX	V-27	UL-308, UJ-33	10200
TEQ	V-43		9600
PXM	V-1	J-1, UJ-9	5400
VER		UJ-39, UJ-70	12000
IZT	V-1	UJ-9	7000
TAP		J-1	5400
VENUS		UL-308	3900

These SIDs require a minimum climb gradient of:
HUATULCO ONE ALFA: 220' per NM to 5000'.
HUATULCO ONE BRAVO: 220' per NM to 10000'

Gnd speed-KT	75	100	150	200	250	300
220' per NM	275	367	550	733	917	1100

NOT TO BE USED FOR ACTUAL NAVIGATION

Apt Elev
464'

Trans level: FL 195 Trans alt: 18500'

5 MAY 06

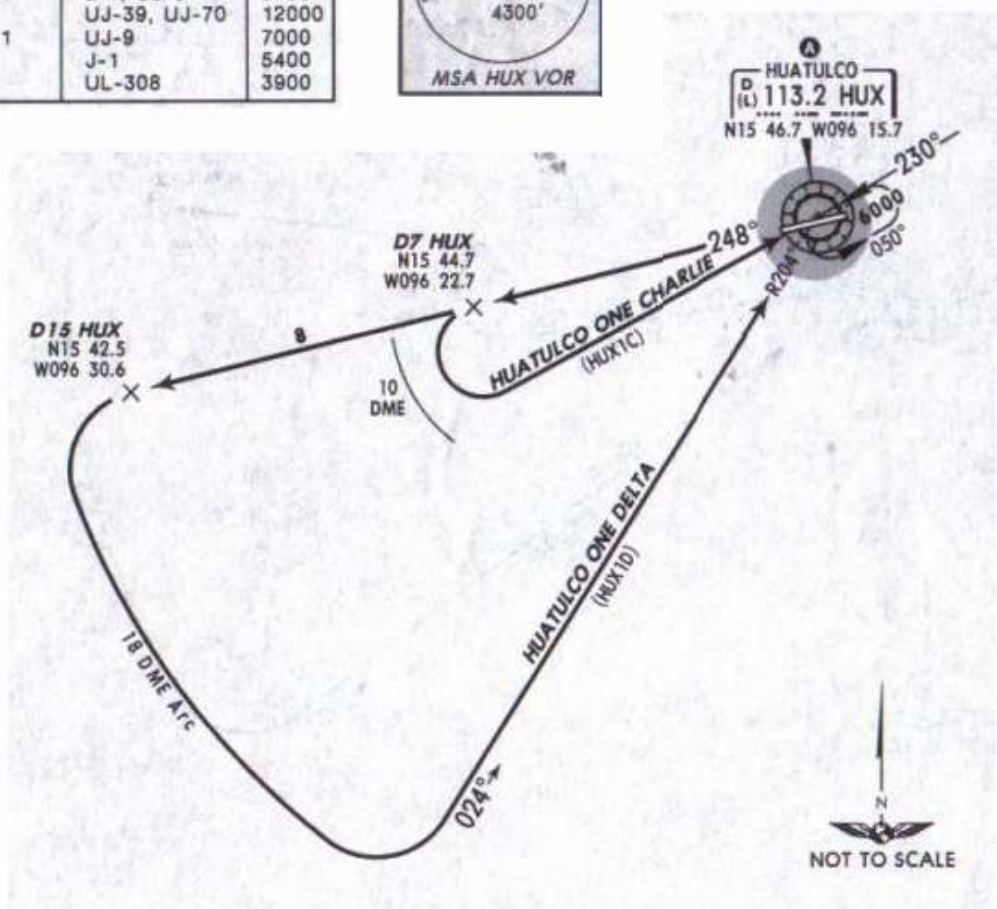
DEPARTURES RUNWAY 25

HUATULCO ONE CHARLIE (HUX1C), HUATULCO ONE DELTA (HUX1D)

The following SID requires a minimum climb gradient of:
HUATULCO ONE DELTA: 220' per NM to 10000'.

Gnd speed-KT	75	100	150	200	250	300
220' per NM	275	367	550	733	917	1100

MINIMUM CROSSING ALTITUDE			
OAX	V-27E	UJ-39, UJ-70	12000
OAX	V-27	UL-308, UJ-33	10200
TEQ	V-43		9600
PXM	V-1	J-1, UJ-9	5400
VER		UJ-39, UJ-70	12000
IZT	V-1	UJ-9	7000
TAP		J-1	5400
VENUS		UL-308	3900

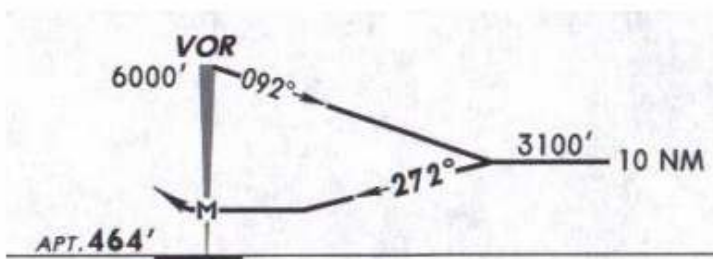
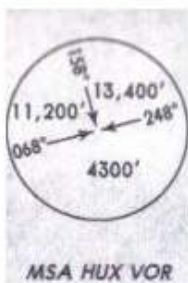
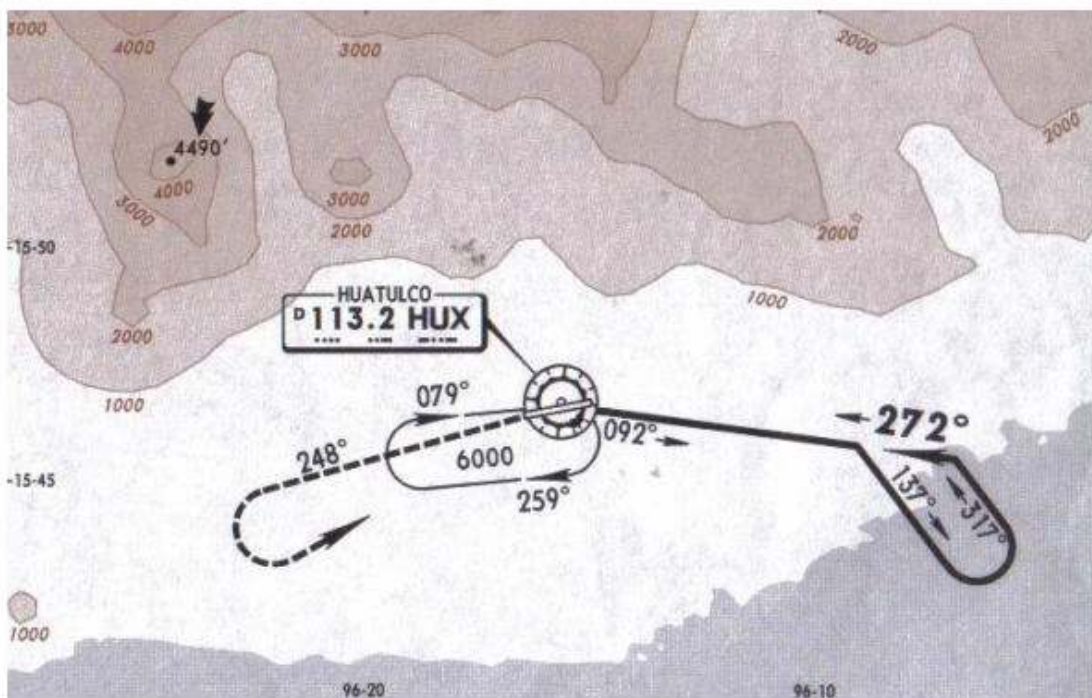


SID	INITIAL CLIMB
HUATULCO ONE CHARLIE	Climb via HUX R-248 to D7 HUX, then turn LEFT within 10 DME direct HUX crossing at the MCA established for the assigned route, or follow ATC instructions.
HUATULCO ONE DELTA	Climb via HUX R-248 to D15 HUX, then turn LEFT and continue via the HUX 18 DME Arc to intercept the HUX R-204 inbound to HUX crossing at the MCA established for the assigned route, or follow ATC instructions.

NOT TO BE USED FOR ACTUAL NAVIGATION

*BAHIAS DE HUATULCO Tower 118.0

VOR HUX 113.2	Final Apch Crs 272°	No FAF	MDA(H) Refer to Minimums	Apt Elev 464'
----------------------------	----------------------------------	--------	--------------------------------	----------------------



MISSED APCH: Climb outbound on HUX VOR R-248, then make a teardrop turn to the LEFT within 10 NM, return to HUX VOR to the minimum holding altitude.

	MAX TIME TO TURN							
	Gnd speed-Kts	80	100	120	140	160	180	200
7 NM to turn	5:15	4:12	3:30	3:00	2:38	2:20	2:06	

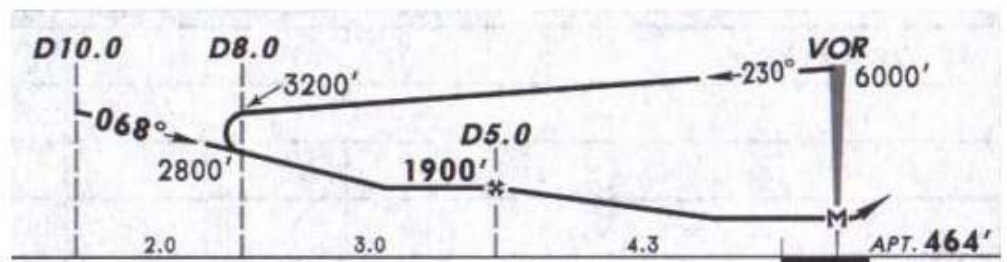
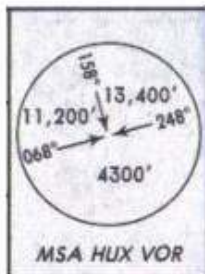
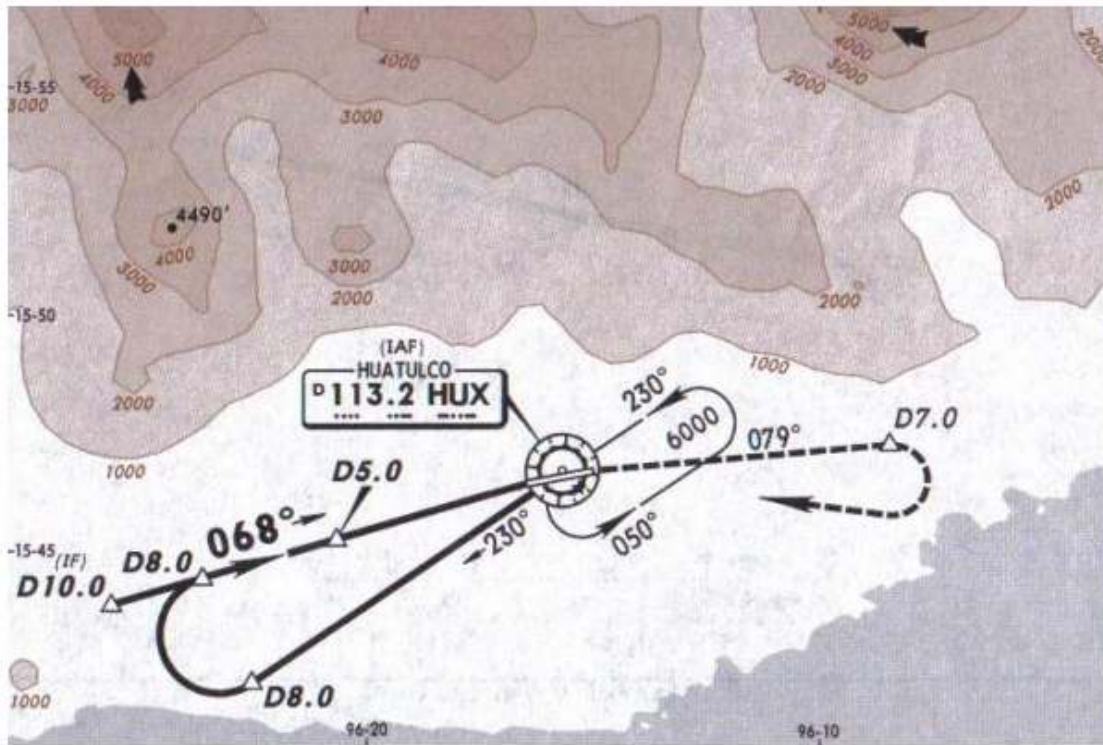
Alt Set: MB (IN on req) Apt Elev: 17 MB Trans level: FL 195 Trans alt: 18500'
1. CAUTION: Do not use radio altimeter as a reference to determine altitude over airport due to orographic conditions.

NOT TO BE USED FOR ACTUAL NAVIGATION

#BAHIAS DE HUATULCO Tower 118.0

5 MAY 06

VOR HUX 113.2	Final Apch Crs 068°	Minimum Alt D5.0 1900' (1436')	MDA(H) 1180' (716')	Apt Elev 464'
----------------------------	----------------------------------	---	-------------------------------	----------------------



MISSED APCH: Climb outbound on HUX VOR R-079 to D7.0, then make a teardrop turn to the RIGHT within 10 NM, return to HUX VOR to the minimum holding altitude.

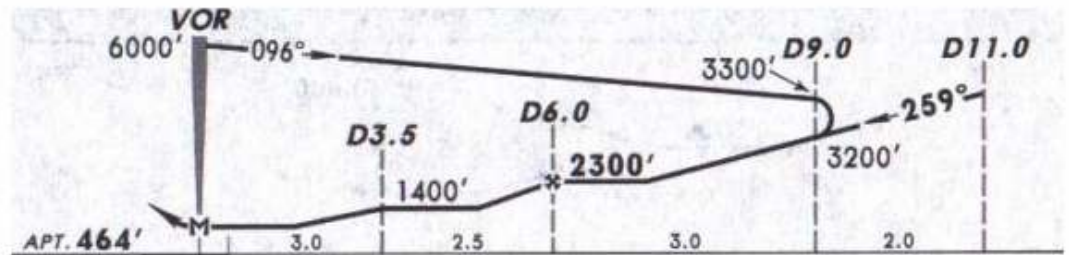
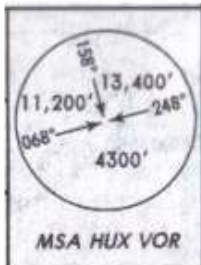
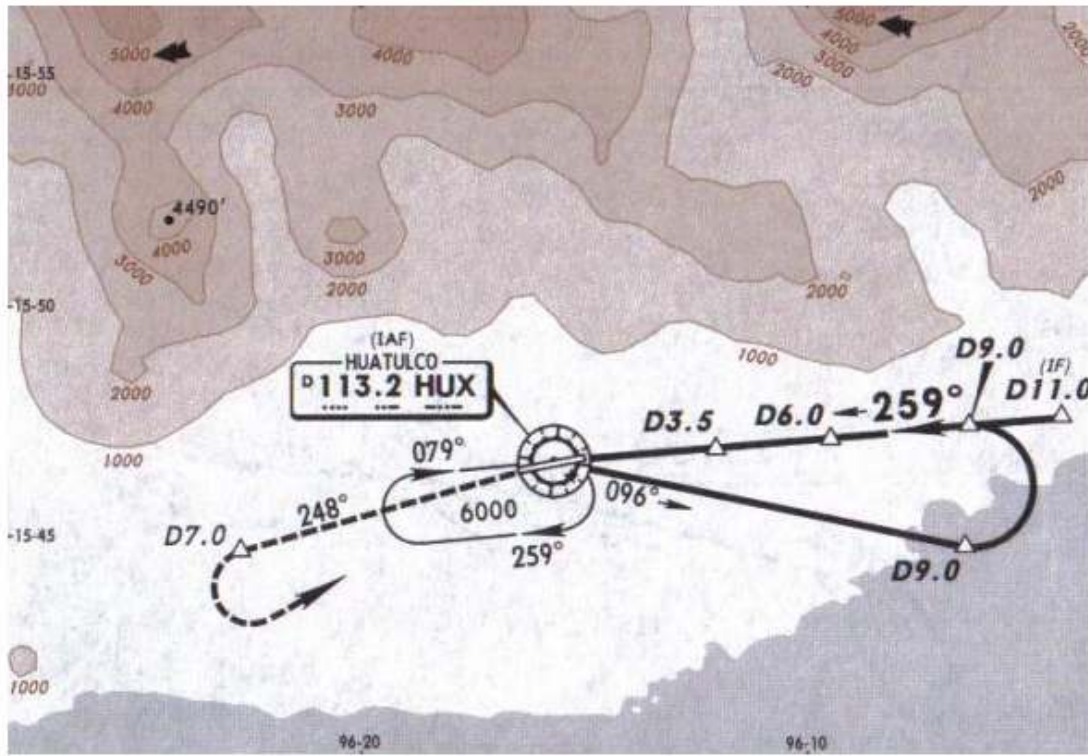
Alt Set: MB (IN on req) Apt Elev: 17 MB Trans level: FL 195 Trans alt: 18500'

1. CAUTION: Do not use radio altimeter as a reference to determine altitude over airport due to orographic conditions.

NOT TO BE USED FOR ACTUAL NAVIGATION

*BAHIAS DE HUATULCO Tower 118.0

VOR HUX 113.2	Final Apch Crs 259°	Minimum Alt D6.0 2300' (1836')	MDA(H) 1040' (576')	Apt Elev 464'
----------------------------	----------------------------------	---	-------------------------------	----------------------

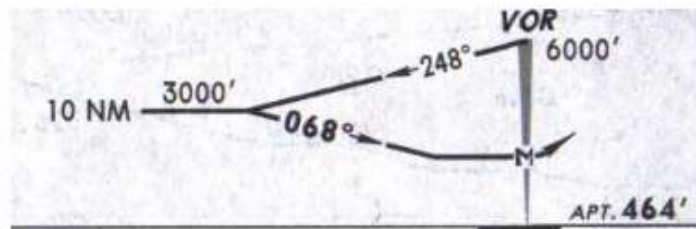
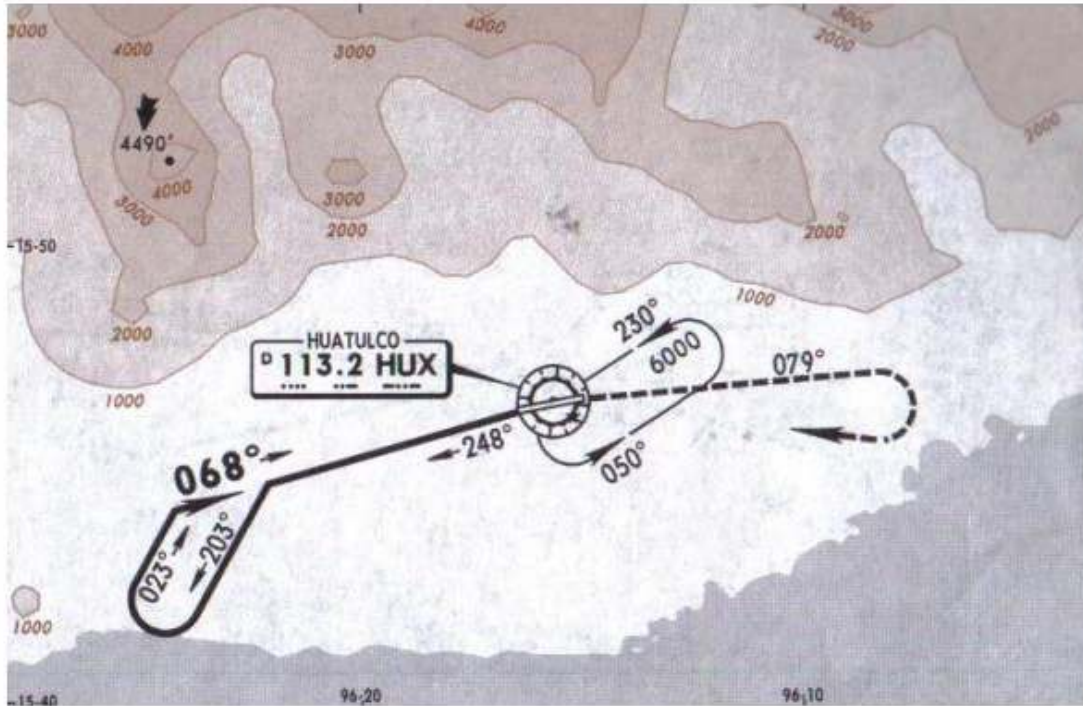


MISSED APCH: Climb outbound on HUX VOR R-248 to D7.0, then make a teardrop turn to the LEFT within 10 NM, return to HUX VOR to the minimum holding altitude.

Alt. Set: MB (IN on req) Apt Elev: 17 MB Trans level: FL 195 Trans alt: 18500'
1. CAUTION: Do not use radio altimeter as a reference to determine altitude over airport due to orographic conditions.

*BAHIAS DE HUATULCO Tower 118.0

VOR HUX 113.2	Final Apch Crs 068°	No FAF	MDA(H) 1220' (756')	Apt Elev 464'
----------------------------	----------------------------------	--------	-------------------------------	----------------------



MISSED APCH: Climb outbound on HUX VOR R-079, then make a teardrop turn to the RIGHT within 10 NM, return to HUX VOR to the minimum holding altitude.

MAX TIME TO TURN							
Gnd speed-Kts	80	100	120	140	160	180	200
7 NM to turn	5:15	4:12	3:30	3:00	2:38	2:20	2:06

Alt Set: MB (IN on req) Apt Elev: 17 MB Trans level: FL 195 Trans alt: 18500'
1. CAUTION: Do not use radio altimeter as a reference to determine altitude over airport due to orographic conditions.

NOT TO BE USED FOR ACTUAL NAVIGATION