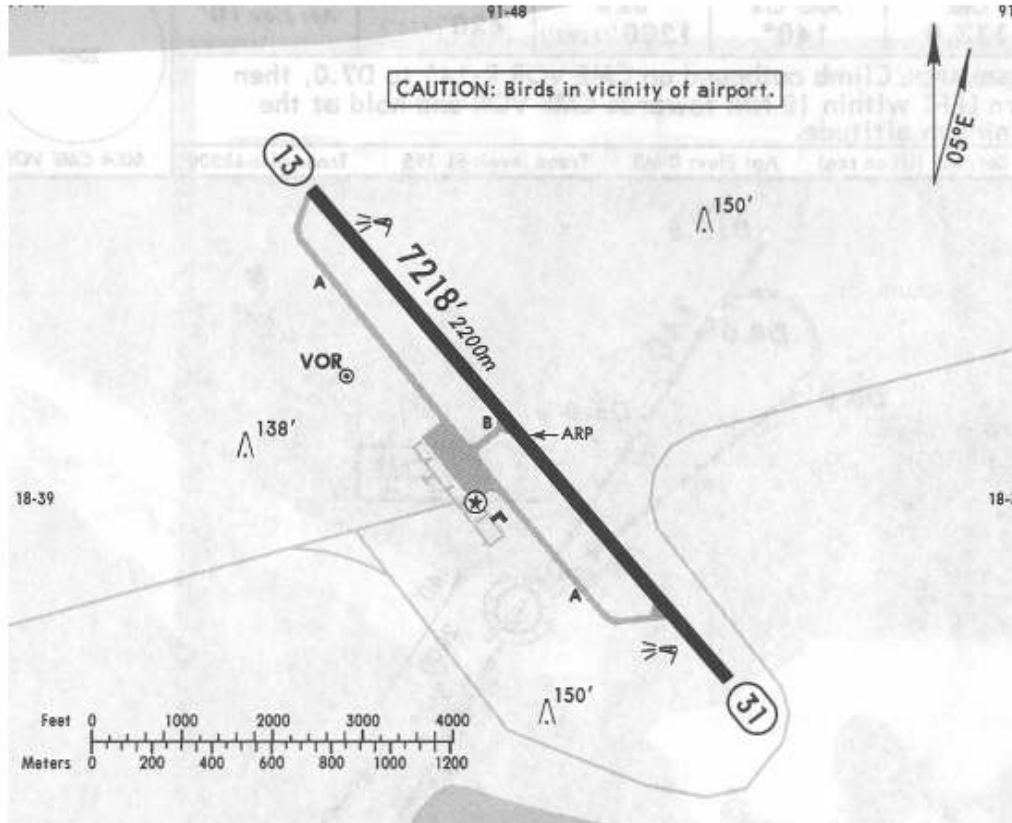


26 SEP 03

Apt Elev 10'

\*CARMEN Tower  
118.4



RWY		ADDITIONAL RUNWAY INFORMATION		USABLE LENGTHS		TAKE-OFF	WIDTH
		Threshold	Landing Beyond	Threshold	Glide Slope		
13	31	HIRL	PAPI-L (angle 3.0°)				148' 45m

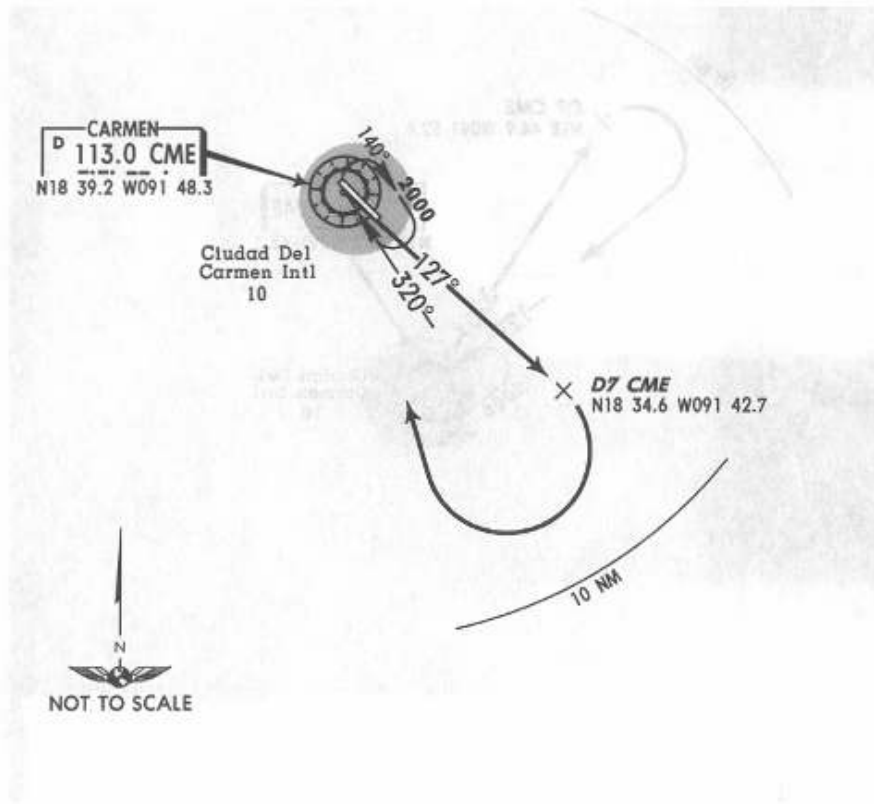
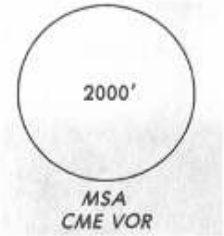
DEPARTURE PROCEDURE: For departures and MCAs see Ciudad Del Carmen 10-3/10-3A.

NOT TO BE USED FOR ACTUAL NAVIGATION

TRANS LEVEL: FL 195  
TRANS ALT: 18500'

26 SEP 03

**DEPARTURE RWY 13**  
**CARMEN ONE ALFA (CME1A)**



**DEPARTURE**

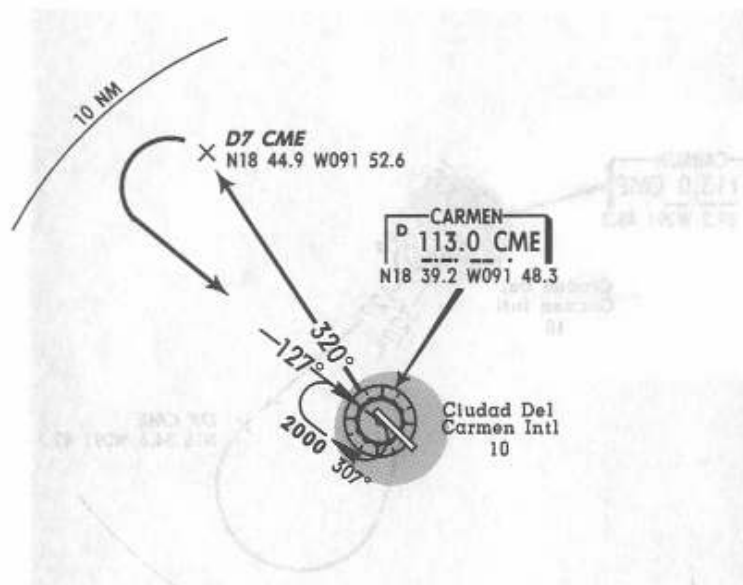
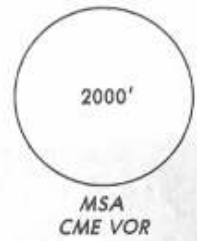
Climb on CME R-127 until D7 CME. Then turn RIGHT within 10 NM to CME VOR and depart at the MCA of the assigned route or in accordance with ATC instructions.  
MCA: 2000' for all airways aligned with CME VOR.

NOT TO BE USED FOR ACTUAL NAVIGATION

TRANS LEVEL: FL 195  
TRANS ALT: 18500'

26 SEP 03

**DEPARTURE RWY 31**  
CARMEN ONE BRAVO (CME1B)

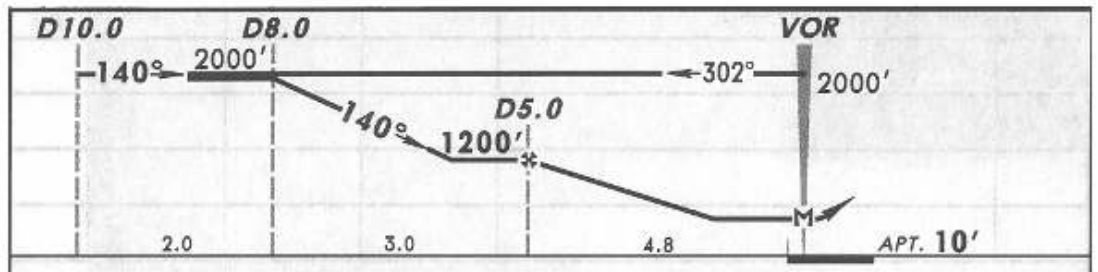
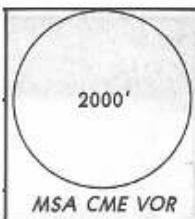
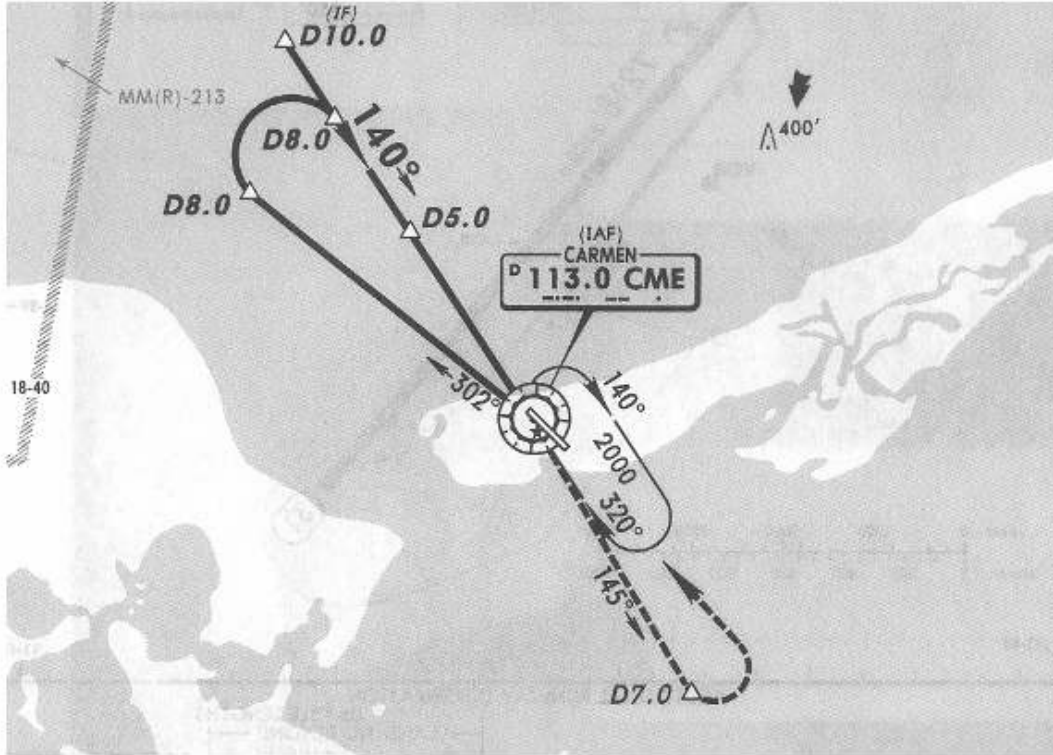


**DEPARTURE**

Climb on CME R-320 until D7 CME. Then turn LEFT within 10 NM to CME VOR and depart at the MCA of the assigned route or in accordance with ATC instructions.  
MCA: 2000' for all airways aligned with CME VOR.

\*CARMEN Tower  
118.4

26 SEP 03



VOR CME 113.0	Final Apch Crs 140°	Minimum Alt D5.0 1200'(1190')	MDA(H) 420'(410')	Apch Elev 10'
---------------------	---------------------------	-------------------------------------	----------------------	---------------

**MISSED APCH:** Climb outbound on CME VOR R-145 to D7.0, then turn LEFT within 10 NM towards CME VOR and hold at the minimum altitude.

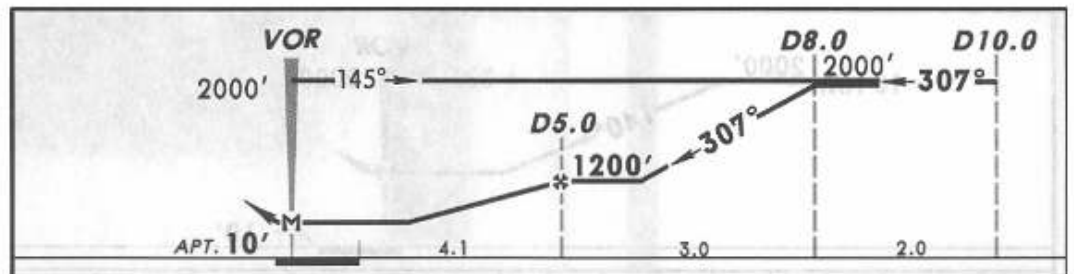
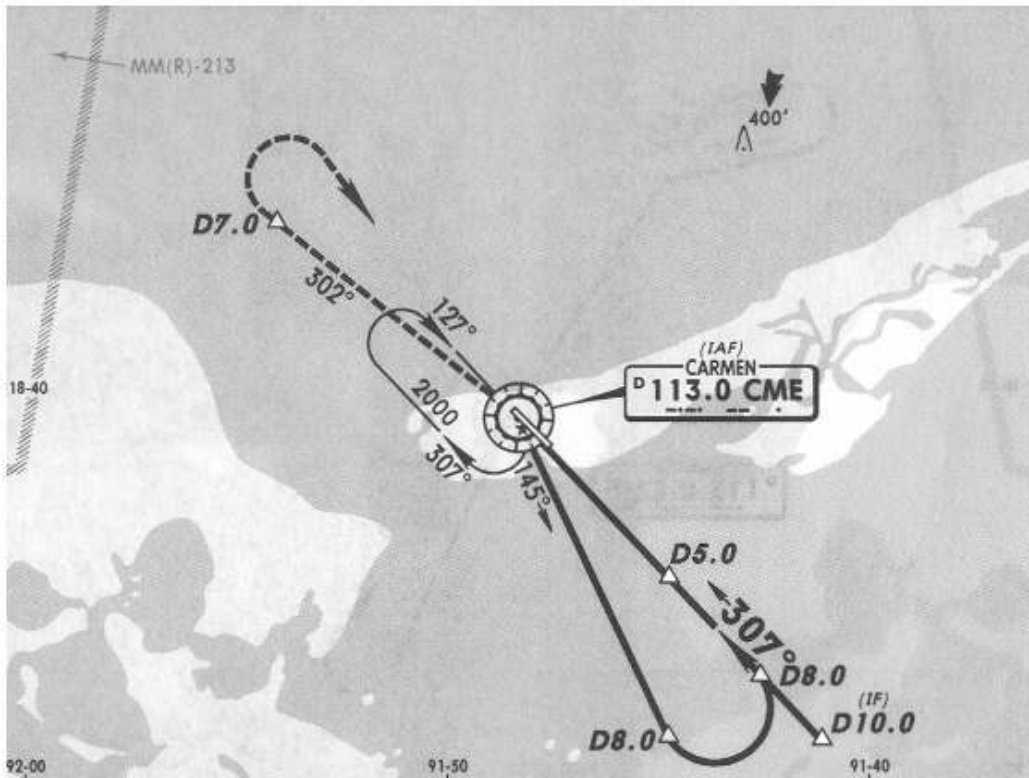
Alt Set: MB (IN on req)    Apt Elev: 0 MB    Trans level: FL 195    Trans alt: 18500'

NOT TO BE USED FOR ACTUAL NAVIGATION

\*CARMEN Tower

26 SEP 03

118.4

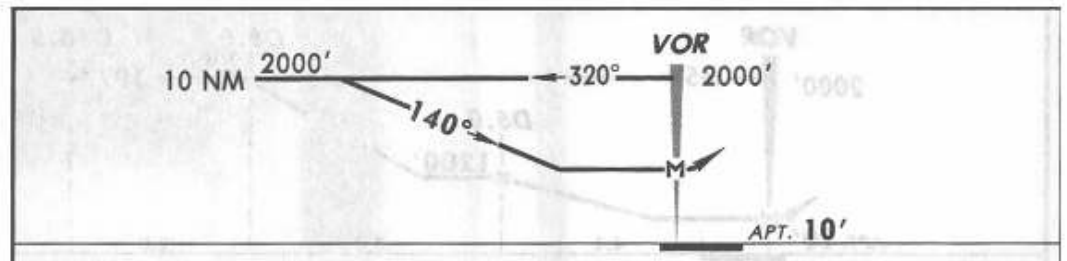
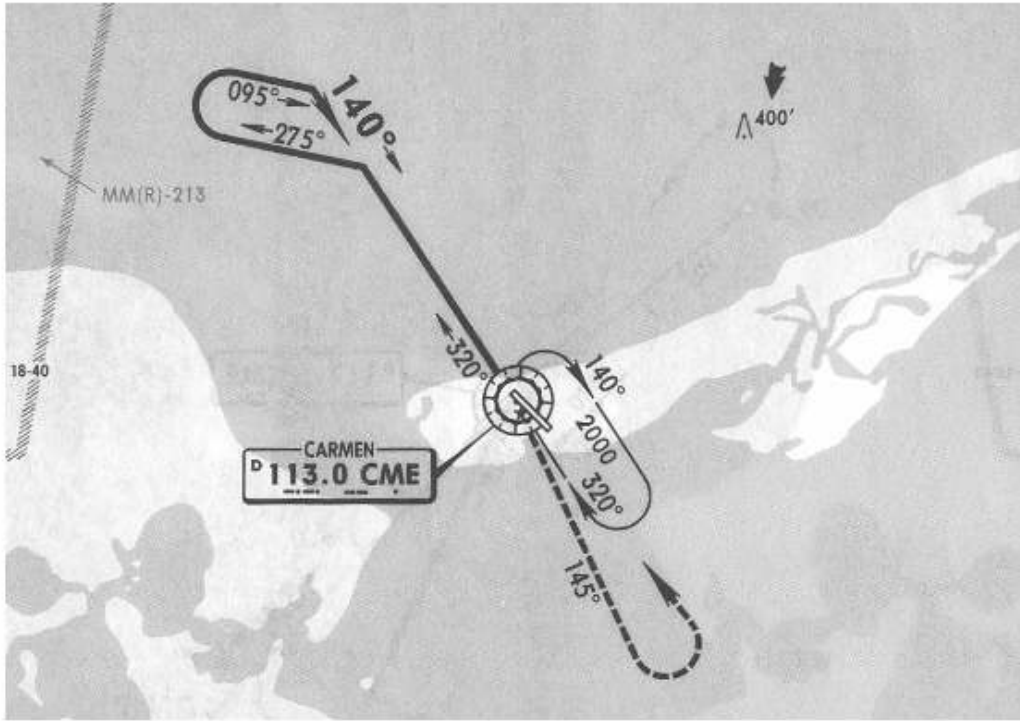


VOR CME 113.0	Final Apch Crs 307°	Minimum Alt D5.0 1200' (1190')	MDA(H) 420' (410')	Apt Elev 10'
MISSED APCH: Climb outbound on CME VOR R-302 to D7.0, then turn RIGHT within 10 NM towards CME VOR and hold at the minimum altitude.				
Alt Set: MB (IN on req) Apt Elev: 0 MB Trans level: FL 195 Trans alt: 18500'				

NOT TO BE USED FOR ACTUAL NAVIGATION

26 SEP 03

\*CARMEN Tower  
118.4



VOR CME <b>113.0</b>	Final Apch Crs <b>140°</b>	No FAF	MDA(H) <b>500' (490')</b>	Apt Elev <b>10'</b>				
<b>MISSED APCH: Climb outbound on CME VOR R-145, then turn LEFT within 10 NM towards CME VOR and hold at the minimum altitude.</b>								
MAX TIME TO TURN.								
Gnd speed-Kts		80	100	120	140	160	180	200
7 NM to turn		5:15	4:12	3:30	3:00	2:38	2:20	2:06
Alt Set: MB (IN on req)		Apt Elev: 0 MB		Trans level: FL 195		Trans alt: 18500'		

NOT TO BE USED FOR ACTUAL NAVIGATION