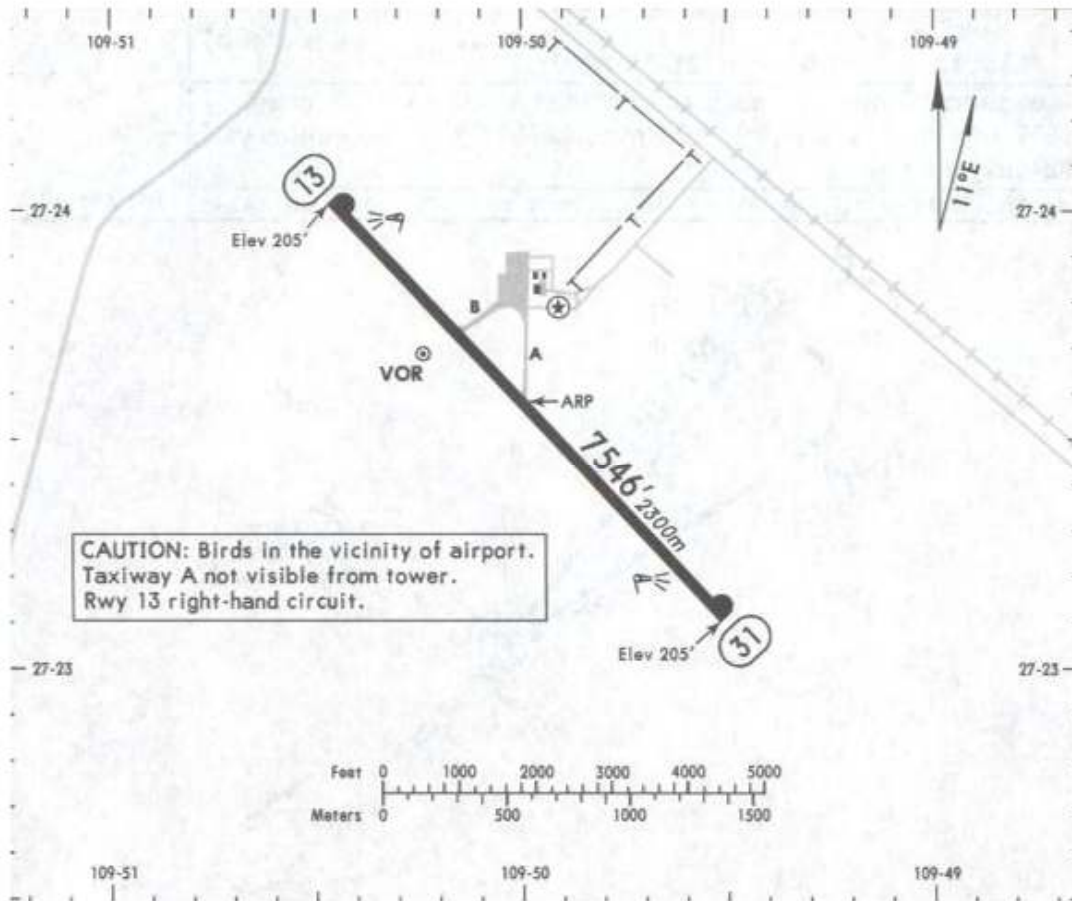


Apt Elev **205'**
N27 23.6 W109 50.0

*ATIS
127.6

*OBREGON Tower
118.3

6 APR 07



RWY	ADDITIONAL RUNWAY INFORMATION	USABLE LENGTHS			WIDTH
		LANDING BEYOND		TAKE-OFF	
		Threshold	Glide Slope		
13 31	HIRL PAPI-L (angle 3.0°)				148' 45m

NOT TO BE USED FOR ACTUAL NAVIGATION

Apt Elev
205'

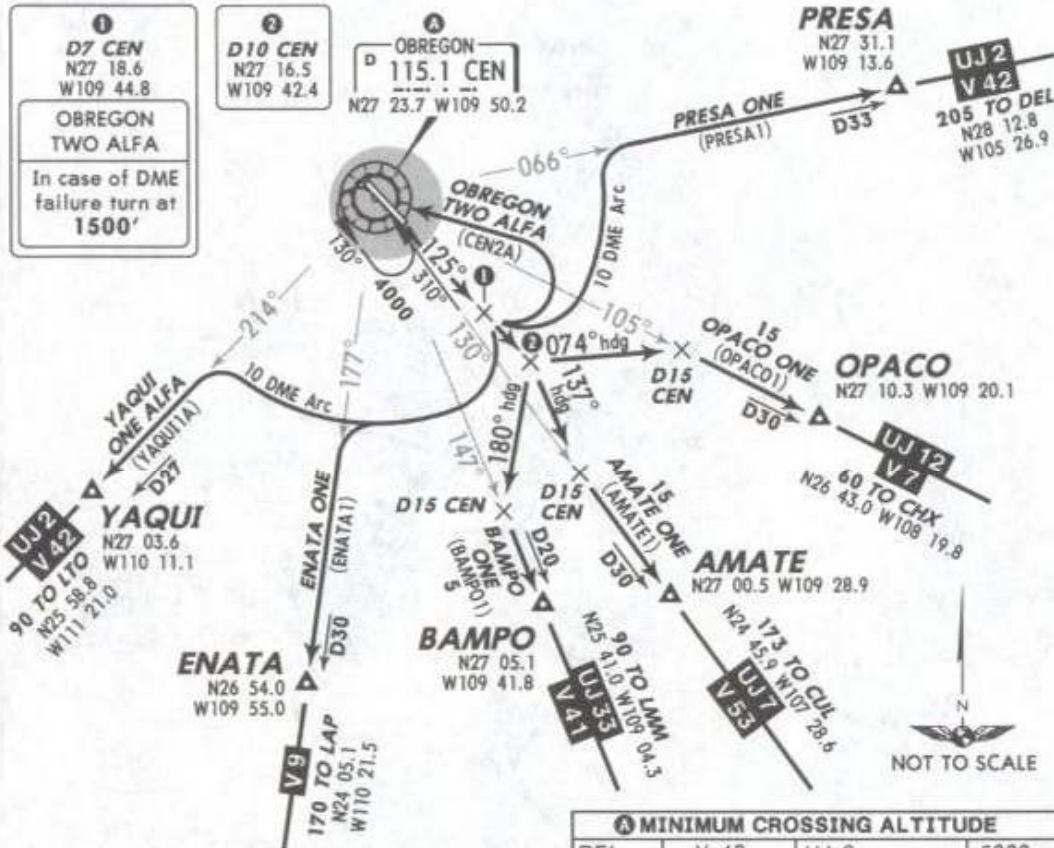
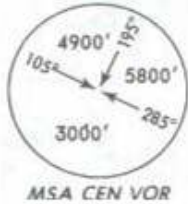
Trans level: FL195 Trans alt: 18500'

3 JUN 05

Eff 9 Jun

DEPARTURES RWY 13

AMATE ONE (AMATE1), BAMPO ONE (BAMPO1), ENATA ONE (ENATA1),
OBREGON TWO ALFA (CEN2A), OPACO ONE (OPACO1), PRESA ONE (PRESA1),
YAQUI ONE ALFA (YAQUI1A)



1
D7 CEN
N27 18.6
W109 44.8
OBREGON TWO ALFA
In case of DME failure turn at **1500'**

2
D10 CEN
N27 16.5
W109 42.4

3
OBREGON
115.1 CEN
N27 23.7 W109 50.2

PRESA
N27 31.1
W109 13.6

UJ2 V42
205 TO DEL
N28 12.8
W105 26.9

UJ2 V42
90 TO LTO
N25 58.8
W111 21.0

ENATA
N26 54.0
W109 55.0

BAMPO
N27 05.1
W109 41.8

AMATE
N27 00.5 W109 28.9

OPACO
N27 10.3 W109 20.1

UJ12 V7
60 TO CHX
N26 43.0 W108 19.8

MINIMUM CROSSING ALTITUDE

DEL	V-42	UJ-2	5000
CHX	V-7	UJ-12	4100
CUL	V-53	UJ-7	3000
LMM	V-41	UJ-33	3000
LAP	V-9		3000
LTO	V-42	UJ-2	2100
GYM	V-7	UJ-12	2600
HMO	V-41	UJ-7	4000

These SIDs require minimum climb gradients:
OPACO ONE and PRESA ONE:
240' per NM to 5000'.

Gnd speed-KT	75	100	150	200	250	300
240' per NM	300	400	600	800	1000	1200

SID	INITIAL CLIMB
AMATE ONE	Climb on CEN R-125 to D10 CEN, turn RIGHT on heading 137°, intercept CEN R-130 to AMATE. Continue on the assigned route or in accordance with ATC instructions.
BAMPO ONE	Climb on CEN R-125 to D10 CEN, turn RIGHT on heading 180°, intercept CEN R-147 to BAMPO. Continue on the assigned route or in accordance with ATC instructions.
ENATA ONE, YAQUI ONE ALFA	Climb on CEN R-125 to D7 CEN, turn RIGHT and proceed on CEN 10 DME Arc to intercept the corresponding radial from CEN to ENATA or YAQUI. Continue on the assigned route or in accordance with ATC instructions.
OBREGON TWO ALFA	Climb on CEN R-125 to D7 CEN (to 1500' in case of DME failure). Then tear drop turn to the LEFT within 10 DME CEN. Depart CEN at the MCA A of the assigned route or in accordance with ATC instructions.
OPACO ONE	Climb on CEN R-125 to D10 CEN, turn LEFT on heading 074°, intercept CEN R-105 to OPACO. Continue on the assigned route or in accordance with ATC instructions.
PRESA ONE	Climb on CEN R-125 to D7 CEN, turn LEFT and proceed on CEN 10 DME Arc to intercept CEN R-066 to PRESA. Continue on the assigned route or in accordance with ATC instructions.

NOT TO BE USED FOR ACTUAL NAVIGATION

Apt Elev
205'

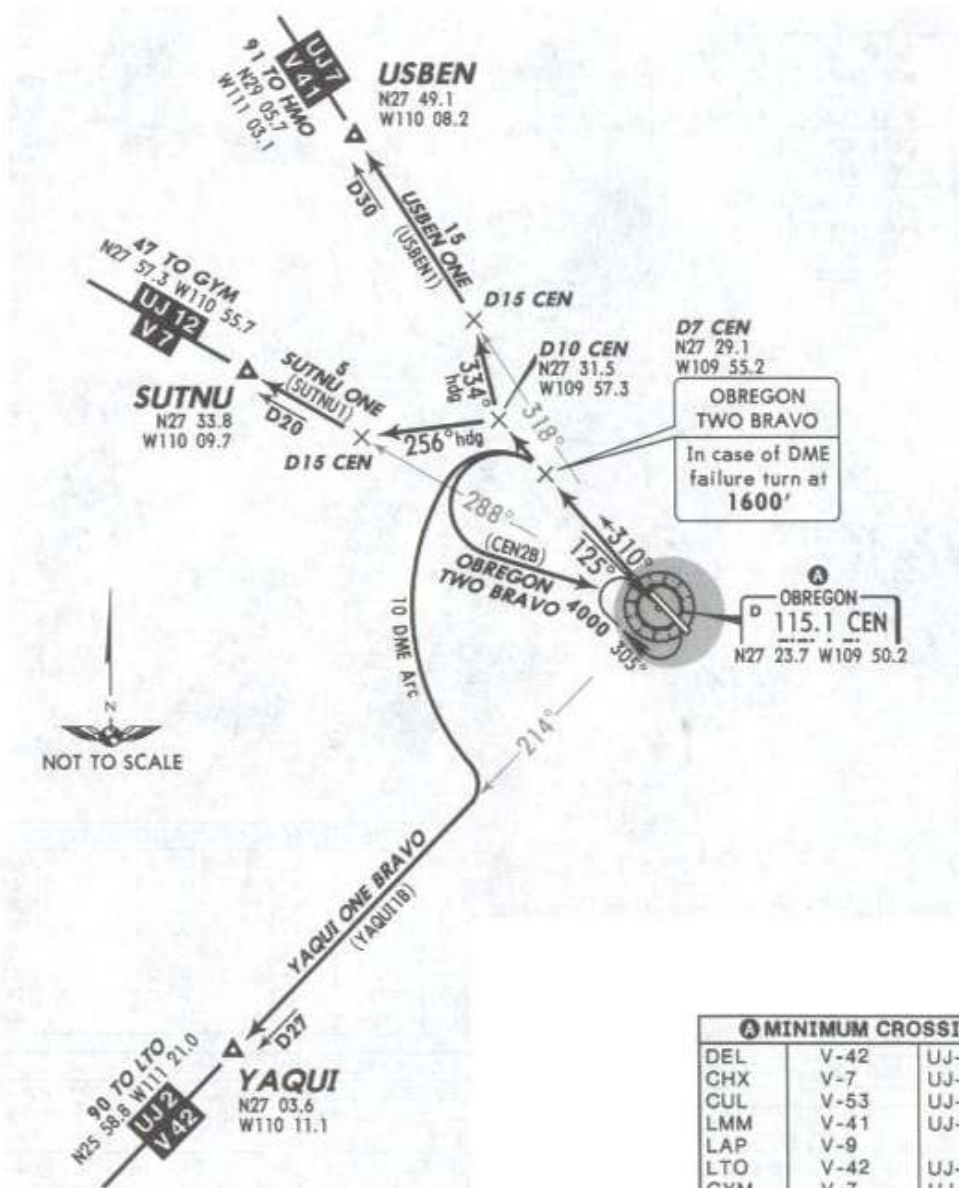
Trans level: FL195 Trans alt: 18500'

3 JUN 05

Eff 9 Jun

DEPARTURES RWY 31

OBREGON TWO BRAVO (CEN2B), SUTNU ONE (SUTNU1),
USBEN ONE (USBEN1), YAQUI ONE BRAVO (YAQUI1B)



MINIMUM CROSSING ALTITUDE			
DEL	V-42	UJ-2	5000
CHX	V-7	UJ-12	4100
CUL	V-53	UJ-7	3000
LMM	V-41	UJ-33	3000
LAP	V-9		3000
LTO	V-42	UJ-2	2100
GYM	V-7	UJ-12	2600
HMO	V-41	UJ-7	4000

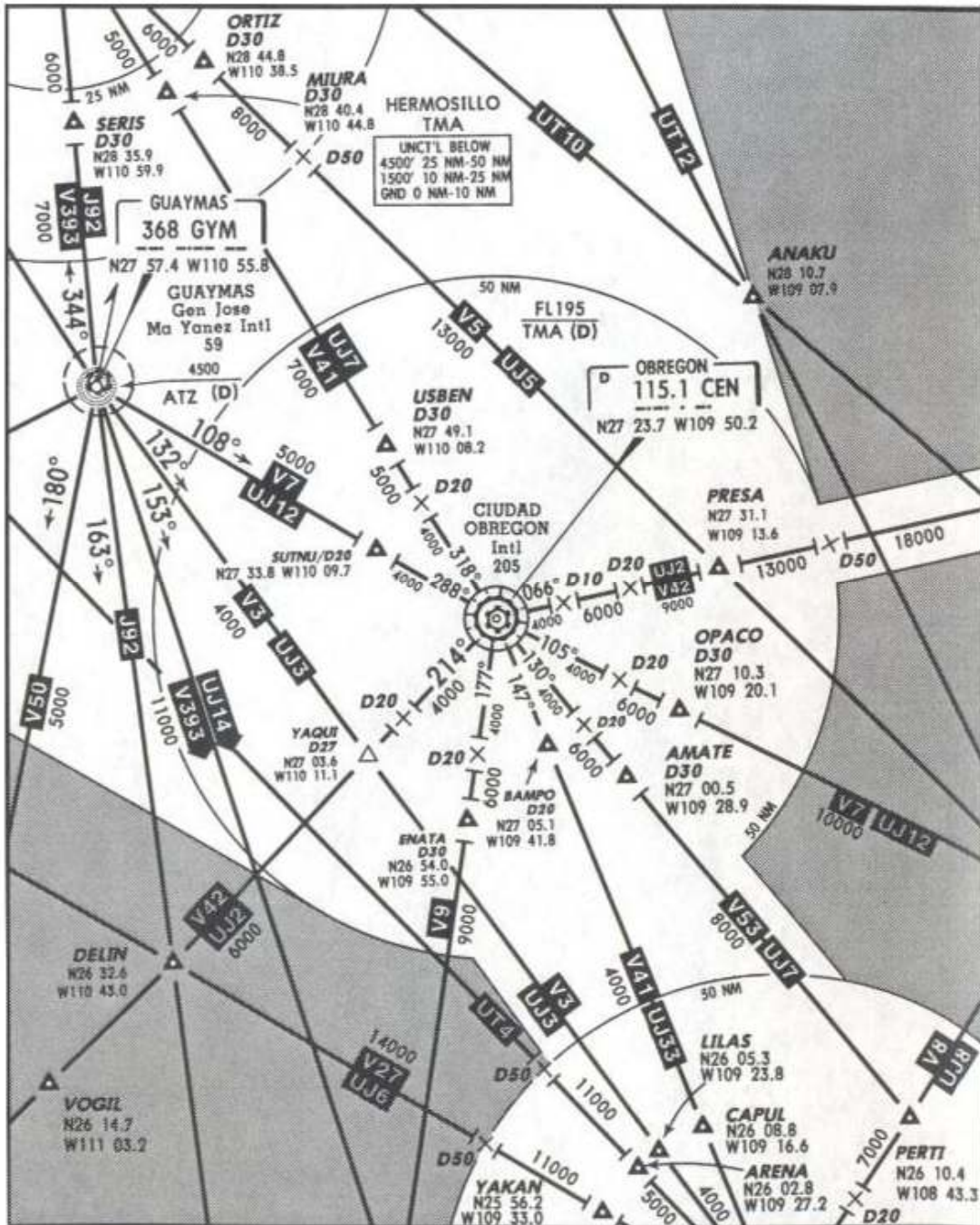
SID	INITIAL CLIMB
OBREGON TWO BRAVO	Climb on CEN R-310 to D7 CEN (to 1600' in case of DME failure). Then tear drop turn to the LEFT within 10 DME CEN. Depart CEN at the MCA A of the assigned route or in accordance with ATC instructions.
SUTNU ONE	Climb on CEN R-310 to D10 CEN, turn LEFT on heading 256°, intercept CEN R-288 to SUTNU. Continue on the assigned route or in accordance with ATC instructions.
USBEN ONE	Climb on CEN R-310 to D10 CEN, turn RIGHT on heading 334°, intercept CEN R-318 to USBEN. Continue on the assigned route or in accordance with ATC instructions.
YAQUI ONE BRAVO	Climb on CEN R-310 to D7 CEN, turn LEFT and proceed on CEN 10 DME Arc to intercept CEN R-214 to YAQUI. Continue on the assigned route or in accordance with ATC instructions.

NOT TO BE USED FOR ACTUAL NAVIGATION

*ATIS
127.7

*HERMOSILLO Approach
121.4

20 FEB 09



SPEED RESTRICTIONS

Maximum IAS unless otherwise depicted or authorized by ATC

WITHIN MEXICO AIRSPACE

- At or below 3000' AGL within 10 NM of any airport.....200 KTS
- At or below 10,000' MSL within Mexico airspace.....250 KTS
- At or below 10,000' AGL within 30 NM of any airport.....250 KTS

WITHIN HERMOSILLO TMA

- At or below 4000' MSL of Gen Ignacio Pesqueira Garcia Intl Apt and within 10 NM of HMO VORDME.....200 KTS
- At or below 11,000' MSL within 30 NM of HMO VORDME.....250 KTS

WITHIN OBREGON TMA

- At or below 3200' MSL of Obregon Intl and within 10 NM of CEN VOR.....200 KTS
- At or below 10,200' MSL within 30 NM of CEN VOR.....250 KTS

NOT TO BE USED FOR ACTUAL NAVIGATION

*ATIS

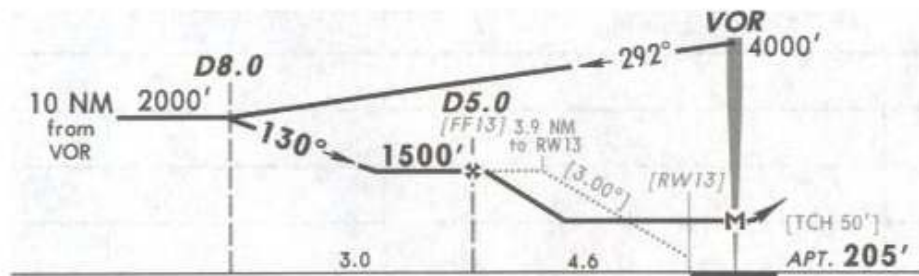
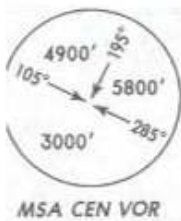
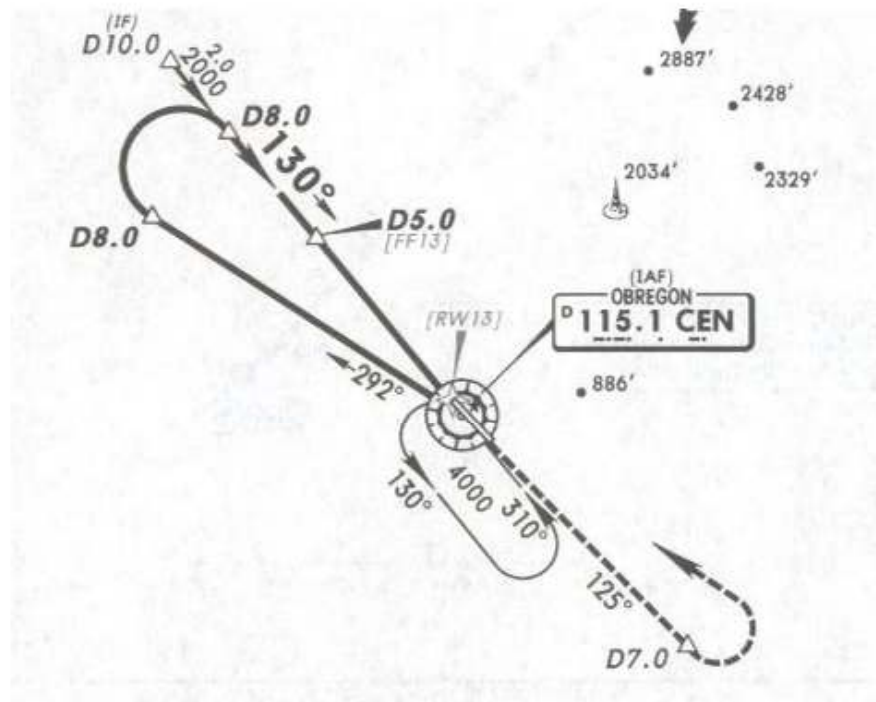
*OBREGON Tower (APP)

6 APR 07

127.6

118.3

VOR CEN 115.1	Final Apch Crs 130°	Minimum Alt D5.0 1500' (1295')	MDA(H) 760' (555')	Apt Elev 205'
----------------------------	----------------------------------	---	------------------------------	----------------------



MISSED APCH: Climb outbound on CEN VOR R-125 to D7.0, make LEFT teardrop turn within 10 NM to CEN VOR to the minimum holding altitude.

Alt Set: MB (IN on req) Apt Elev: 7 MB Trans level: FL 195 Trans alt: 18500'

*ATIS

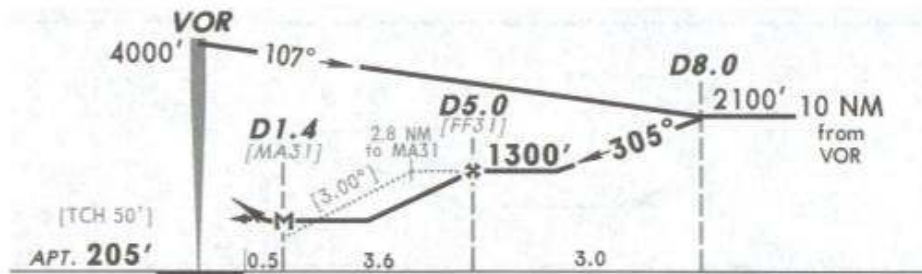
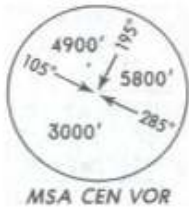
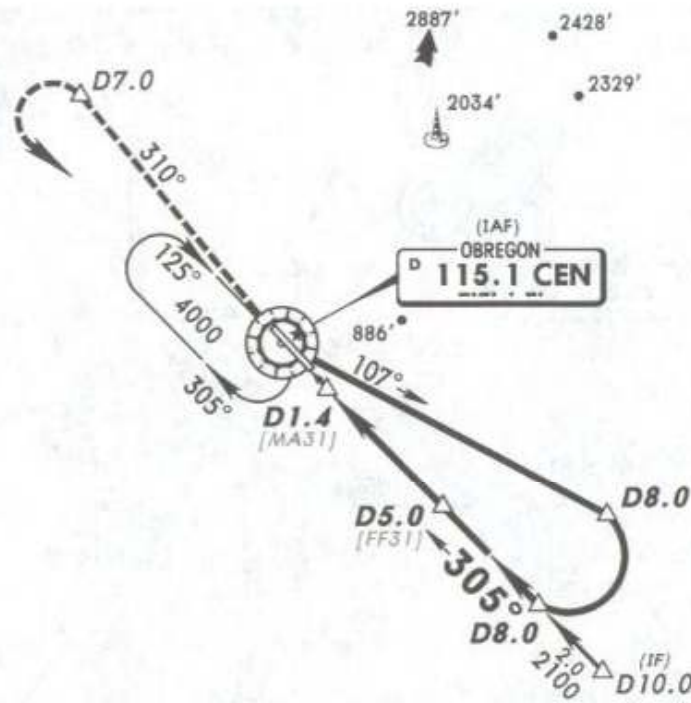
*OBREGON Tower (APP)

6 OCT 06

127.6

118.3

VOR CEN 115.1	Final Apch Crs 305°	Minimum Alt D5.0 1300' (1095')	MDA(H) 740' (535')	Apt Elev 205'
---------------------	---------------------------	--------------------------------------	-----------------------	---------------



MISSED APCH: Climb outbound on CEN VOR R-310 to D7.0, make LEFT teardrop turn within 10 NM to CEN VOR to the minimum holding altitude.

Alt Set: MB (IN on req) Apt Elev: 7 MB Trans level: FL 195 Trans alt: 18500'

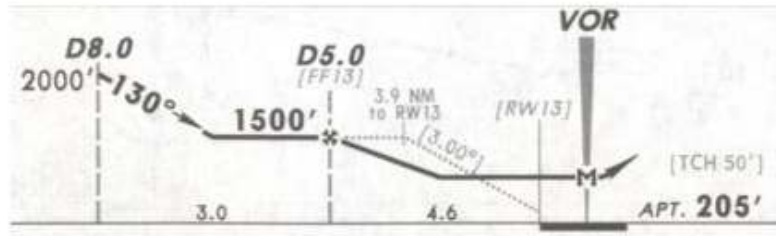
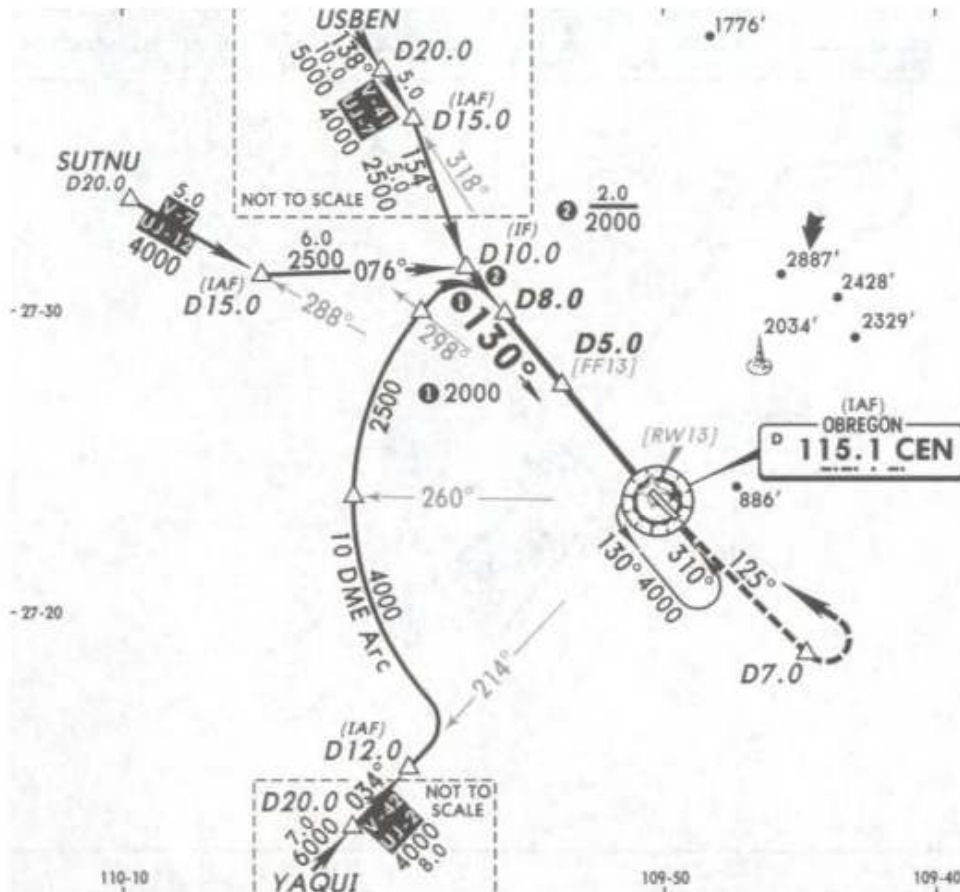
NOT TO BE USED FOR ACTUAL NAVIGATION

*ATIS
127.6

*OBREGON Tower (APP)
118.3

6 OCT 06

VOR CEN 115.1	Final Apch Crs 130°	Minimum Alt D5.0 1500' (1295')	MDA(H) 760' (555')	Apt Elev 205'
----------------------------	----------------------------------	---	------------------------------	----------------------



MISSED APCH: Climb outbound on CEN VOR R-125 to D7.0, make LEFT teardrop turn within 10 NM to CEN VOR to the minimum holding altitude.
Alt Set: MB (IN on req) Apt Elev: 7 MB Trans level: FL 195 Trans alt: 18500'

NOT TO BE USED FOR ACTUAL NAVIGATION

*ATIS

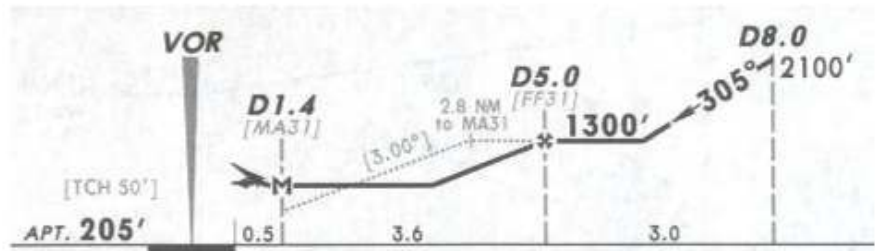
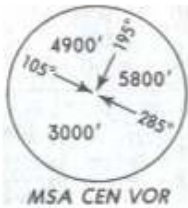
*OBREGON Tower (APP)

6 OCT 06

127.6

118.3

VOR CEN 115.1	Final Apch Crs 305°	Minimum Alt D5.0 1300' (1095')	MDA(H) 740' (535')	Apt Elev 205'
----------------------------	----------------------------------	---	------------------------------	----------------------



MISSED APCH: Climb outbound on CEN VOR R-310 to D7.0, make LEFT teardrop turn within 10 NM to CEN VOR to the minimum holding altitude.
Alt Set: MB (IN on req) Apt Elev: 7 MB Trans level: FL 195 Trans alt: 18500'

NOT TO BE USED FOR ACTUAL NAVIGATION

*ATIS

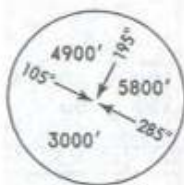
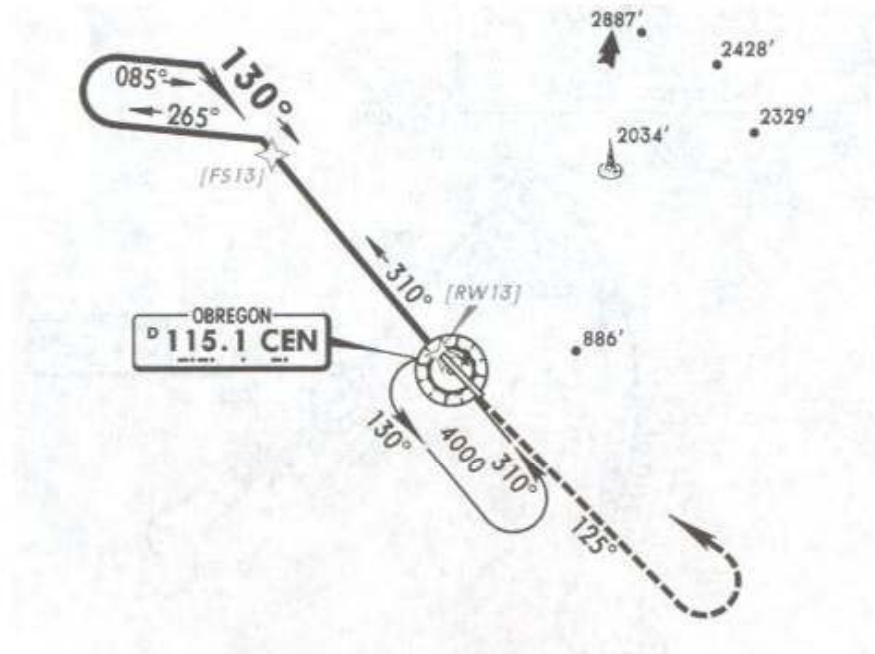
*OBREGON Tower (APP)

6 OCT 06

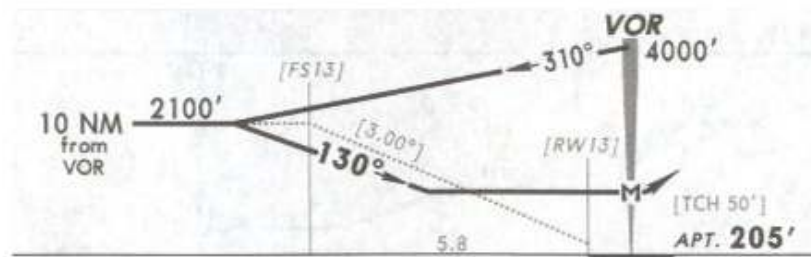
127.6

118.3

VOR CEN 115.1	Final Apch Crs 130°	No FAF	MDA(H) 820'(615')	Apt Elev 205'
----------------------------	----------------------------------	--------	-----------------------------	----------------------



MSA CEN VOR



MISSED APCH: Climb outbound on CEN VOR R-125, make LEFT teardrop turn within 10 NM to CEN VOR to the minimum holding altitude.

MAX TIME TO TURN							
Gnd Speed-Kts	80	100	120	140	160	180	200
7 NM to turn	5:15	4:12	3:30	3:00	2:38	2:20	2:06

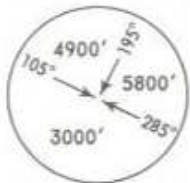
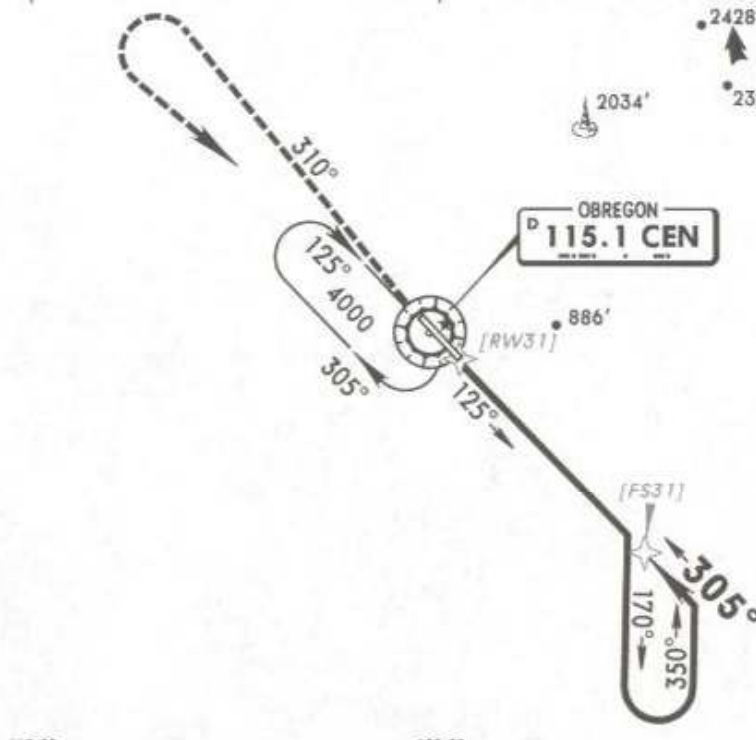
Alt Set: MB (IN on req) Apt Elev: 7 MB Trans level: FL 195 Trans alt: 18500'

NOT TO BE USED FOR ACTUAL NAVIGATION

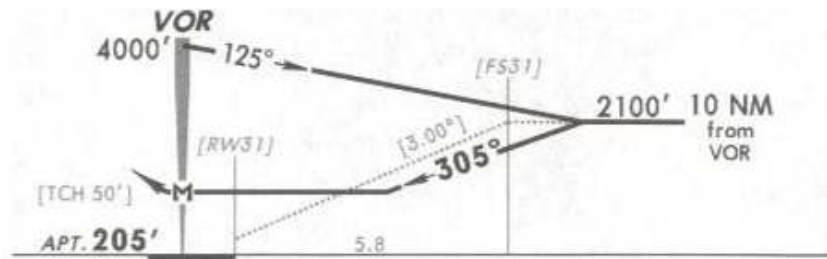
*ATIS 127.6 *OBREGON Tower (APP) 118.3

6 OCT 06

VOR CEN 115.1	Final Apch Crs 305°	No FAF	MDA(H) 960' (755')	Apt Elev 205'
-------------------------	-------------------------------	--------	------------------------------	----------------------



MSA CEN VOR



MISSED APCH: Climb outbound on CEN VOR R-310, make LEFT teardrop turn within 10 NM to CEN VOR to the minimum holding altitude.

MAX TIME TO TURN							
Gnd Speed-Kts	80	100	120	140	160	180	200
7 NM to turn	5:15	4:12	3:30	3:00	2:38	2:20	2:06

Alt Set: MB (IN on req) Apt Elev: 7 MB Trans level: FL 195 Trans alt: 18500'

NOT TO BE USED FOR ACTUAL NAVIGATION