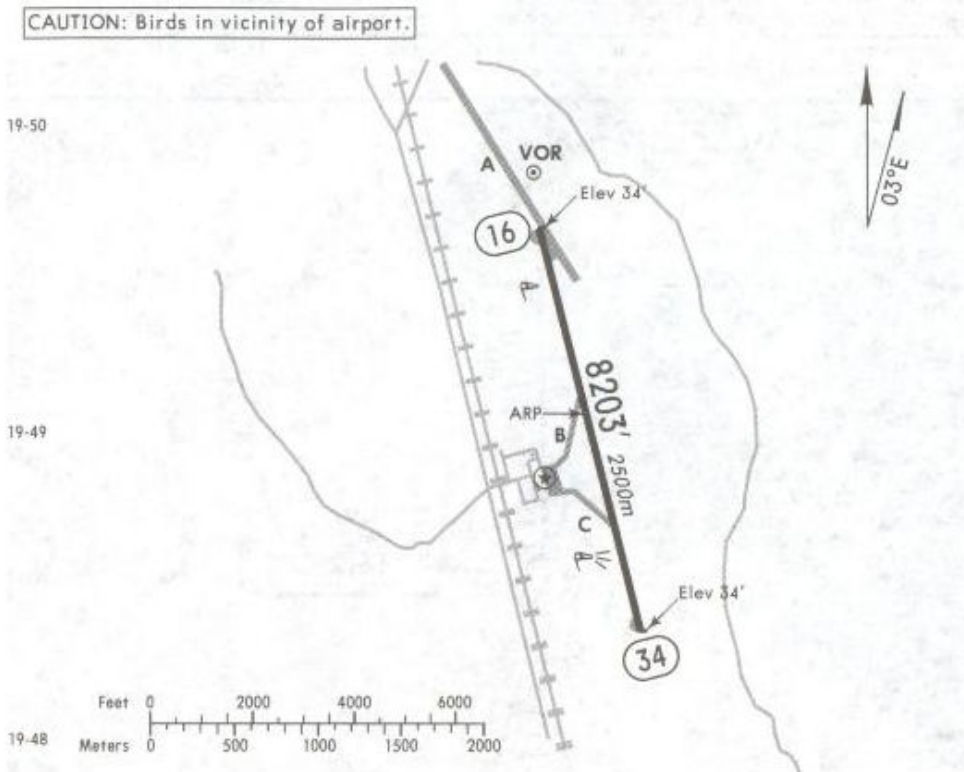


Apt Elev 34'
N19 49.0 W090 30.1

*CAMPECHE Tower 118.5

10 JUL 09



RWY	ADDITIONAL RUNWAY INFORMATION	USABLE LENGTHS		TAKE-OFF	WIDTH
		— LANDING BEYOND —			
		Threshold	Glide Slope		
16 34	HIRL PAPI-L (angle 3.0°)				148' 45m

NOT TO BE USED FOR ACTUAL NAVIGATION

Apt Elev
34'

Trans level: FL 195

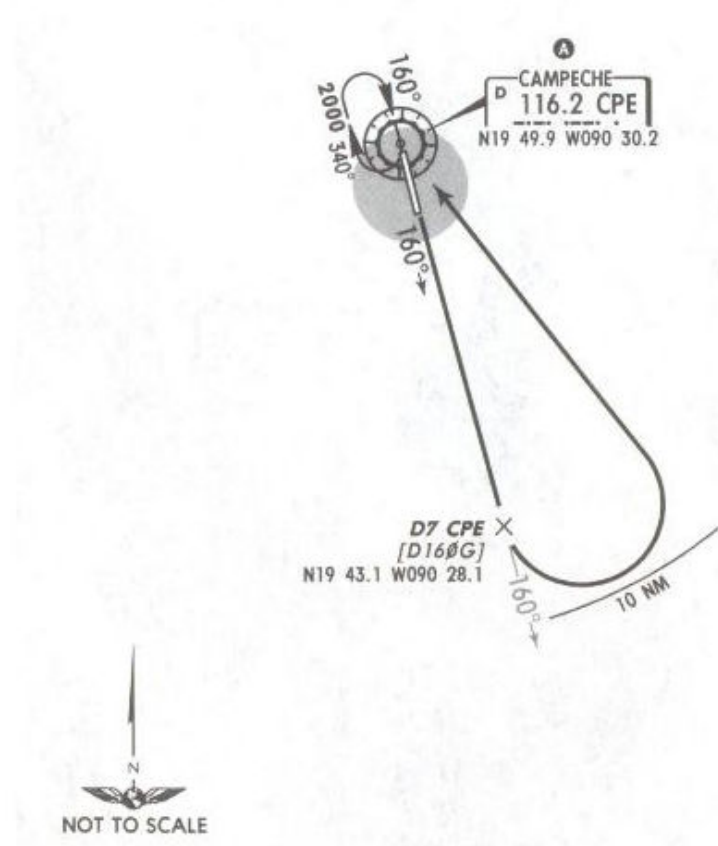
Trans alt: 18500'

20 JUN 03



MSA CPE VOR

DEPARTURE RWY 16
Campeche One Alfa (CPE1A)



A MINIMUM CROSSING ALTITUDE		
CPE	All Airways	2000

ROUTING
Climb on CPE R-160 to D7 CPE, turn LEFT within 10 NM to CPE, at the MCA A for the assigned route or according to ATC instructions.

NOT TO BE USED FOR ACTUAL NAVIGATION

Apt Elev
34'

Trans level: FL 195

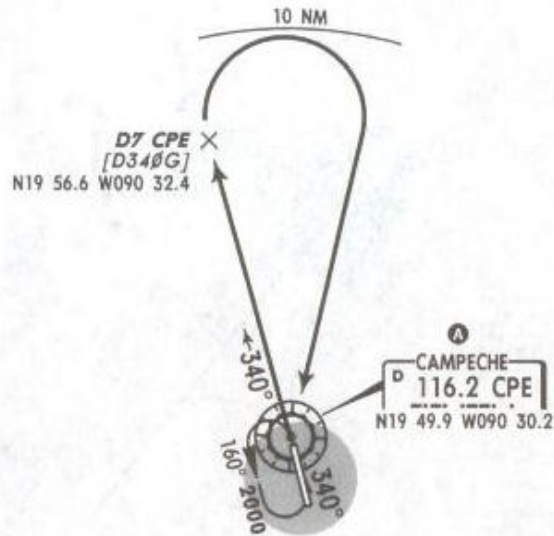
Trans alt: 18500'

20 JUN 03

DEPARTURE RWY 34
Campeche One Bravo (CPE1B)



MSA CPE VOR



A MINIMUM CROSSING ALTITUDE		
CPE	All Airways	2000

ROUTING

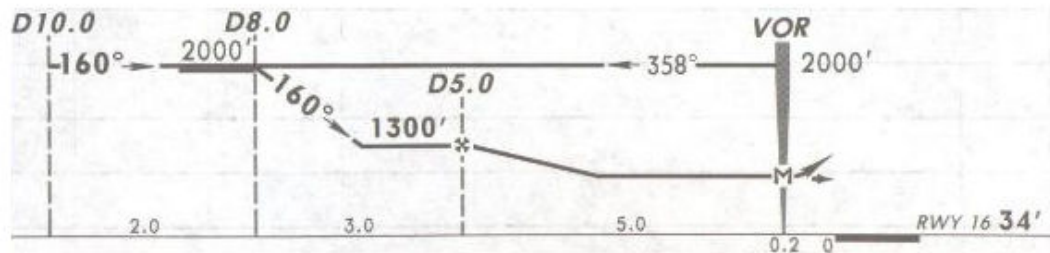
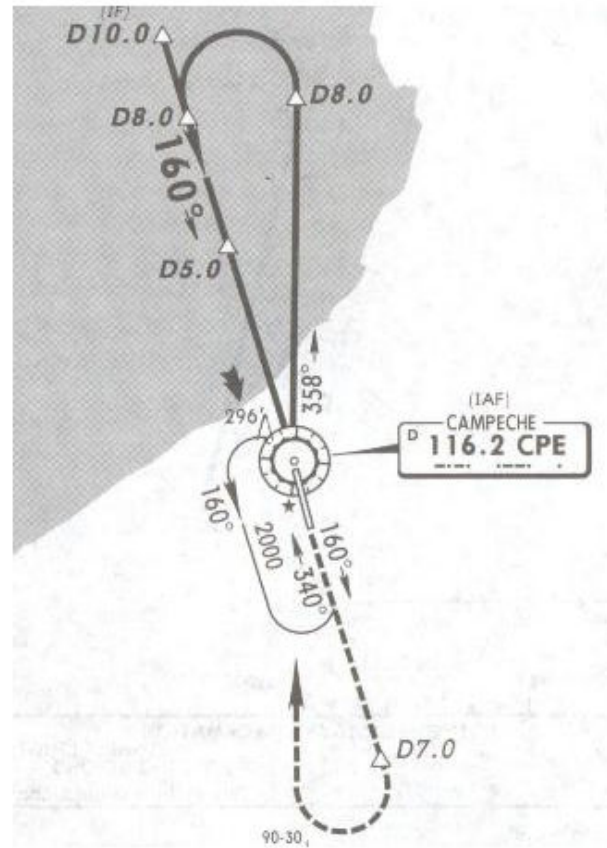
Climb on CPE R-340 to D7 CPE, turn RIGHT within 10 NM to CPE, at the MCA **A** for the assigned route or according to ATC instructions.

NOT TO BE USED FOR ACTUAL NAVIGATION

*CAMPECHE Tower 118.5

10 JUL 09

VOR CPE 116.2	Final Apch Crs 160°	Minimum Alt D5.0 1300' (1266')	MDA(H) 640' (606')	Apch Elev 34' RWY 16 34'
----------------------------	----------------------------------	---	------------------------------	---



MISSED APCH: Climb outbound on CPE VOR R-160 to D7.0, make a RIGHT teardrop turn within 10 NM to CPE VOR to the minimum holding altitude.

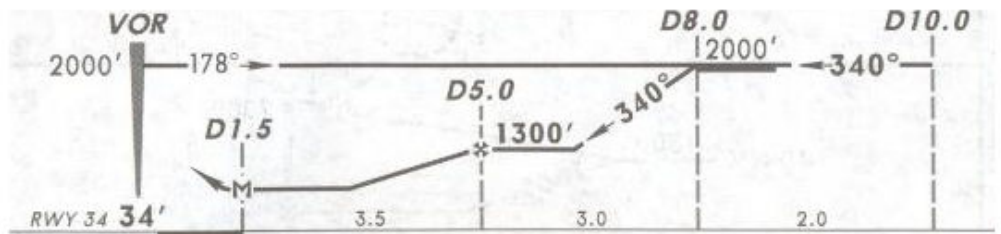
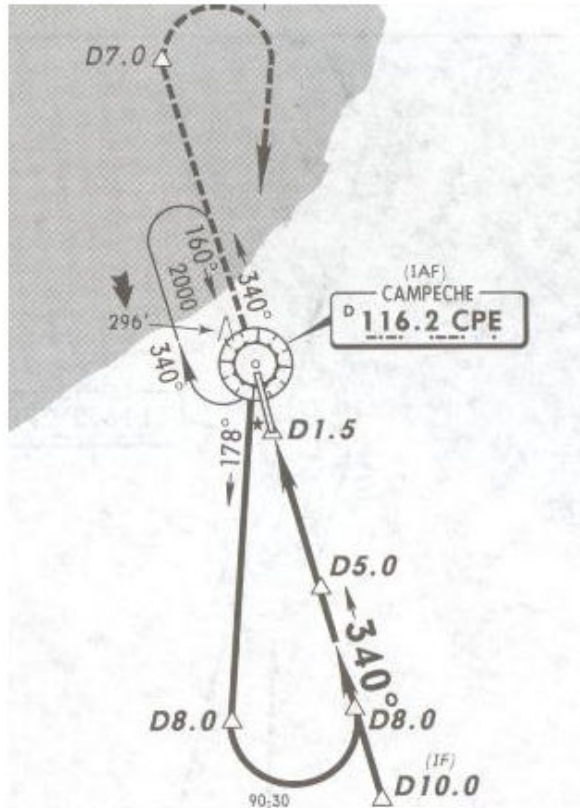
Alt Set: MB (IN on req) Rwy Elev: 1 MB Trans level: FL 195 Trans alt: 18500'

1. CAUTION: Do not use radio altimeter to determine altitude above airport due to orographic conditions.

NOT TO BE USED FOR ACTUAL NAVIGATION

CAMPECHE Tower 118.5

VOR CPE 116.2	Final Apch Crs 340°	Minimum Alt D5.0 1300' (1266')	MDA(H) 560' (526')	Apt Elev 34' RWY 34 34'
----------------------------	----------------------------------	---	------------------------------	-----------------------------------



MISSED APCH: Climb outbound on CPE VOR R-340 to D7.0, make a RIGHT teardrop turn within 10 NM to CPE VOR to the minimum holding altitude.

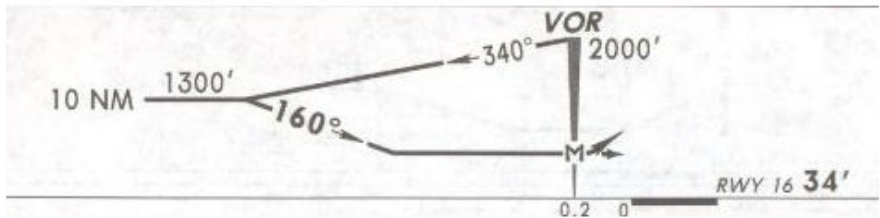
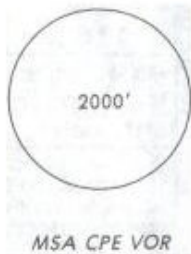
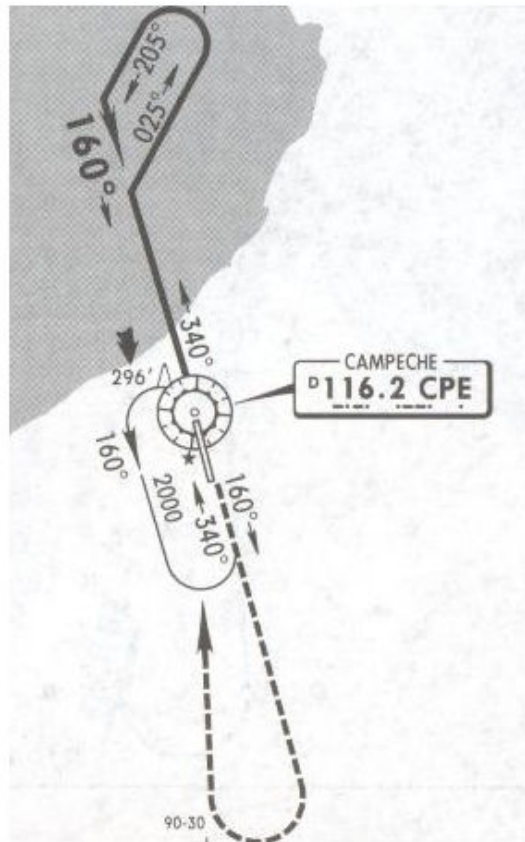
Alt Set: MB (IN on req) Rwy Elev: 1 MB Trans level: FL 195 Trans alt: 18500'
1. CAUTION: Do not use radio altimeter to determine altitude above airport due to orographic conditions.

NOT TO BE USED FOR ACTUAL NAVIGATION

*CAMPECHE Tower 118.5

10 JUL 09

VOR CPE 116.2	Final Apch Crs 160°	No FAF	MDA(H) 700' (666')	Apt Elev 34' RWY 16 34'
----------------------------	----------------------------------	--------	------------------------------	--



MISSED APCH: Climb outbound on CPE VOR R-160, make a RIGHT teardrop turn within 10 NM to CPE VOR to the minimum holding altitude.

MAX TIME TO TURN.							
Gnd speed-Kts	80	100	120	140	160	180	200
7 NM to turn	5:15	4:12	3:30	3:00	2:37	2:20	2:06

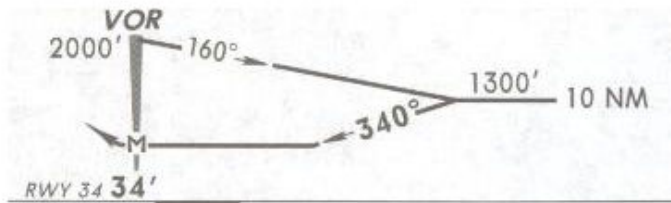
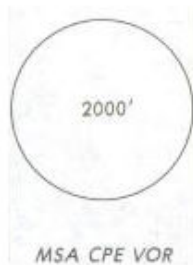
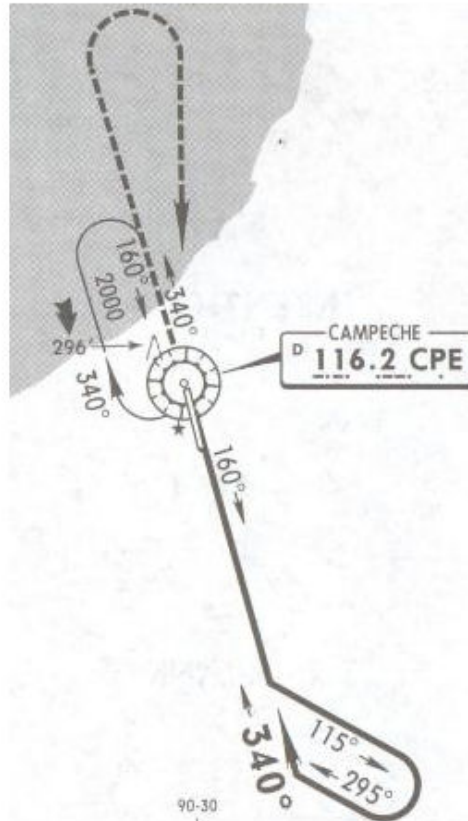
Alt Set: MB (IN on req) Rwy elev: 1 MB Trans level: FL 195 Trans alt: 18500'
1. CAUTION: Do not use radio altimeter to determine altitude above airport due to orographic conditions.

NOT TO BE USED FOR ACTUAL NAVIGATION

*CAMPECHE Tower 118.5

10 JUL 09

VOR CPE 116.2	Final Apch Crs 340°	No FAF	MDA(H) 740' (706')	Apt Elev 34' RWY 34 34'
----------------------------	----------------------------------	--------	------------------------------	--



MISSED APCH: Climb outbound on CPE VOR R-340, make a RIGHT teardrop turn within 10 NM to CPE VOR to the minimum holding altitude.

	MAX TIME TO TURN							
	Gnd speed-Kts	80	100	120	140	160	180	200
7 NM to turn	5:15	4:12	3:30	3:00	2:37	2:20	2:06	

Alt Set: MB (IN on req) Rwy Elev: 1 MB Trans level: FL 195 Trans alt: 18500'
1. CAUTION: Do not use radio altimeter to determine altitude above airport due to orographic conditions.

NOT TO BE USED FOR ACTUAL NAVIGATION