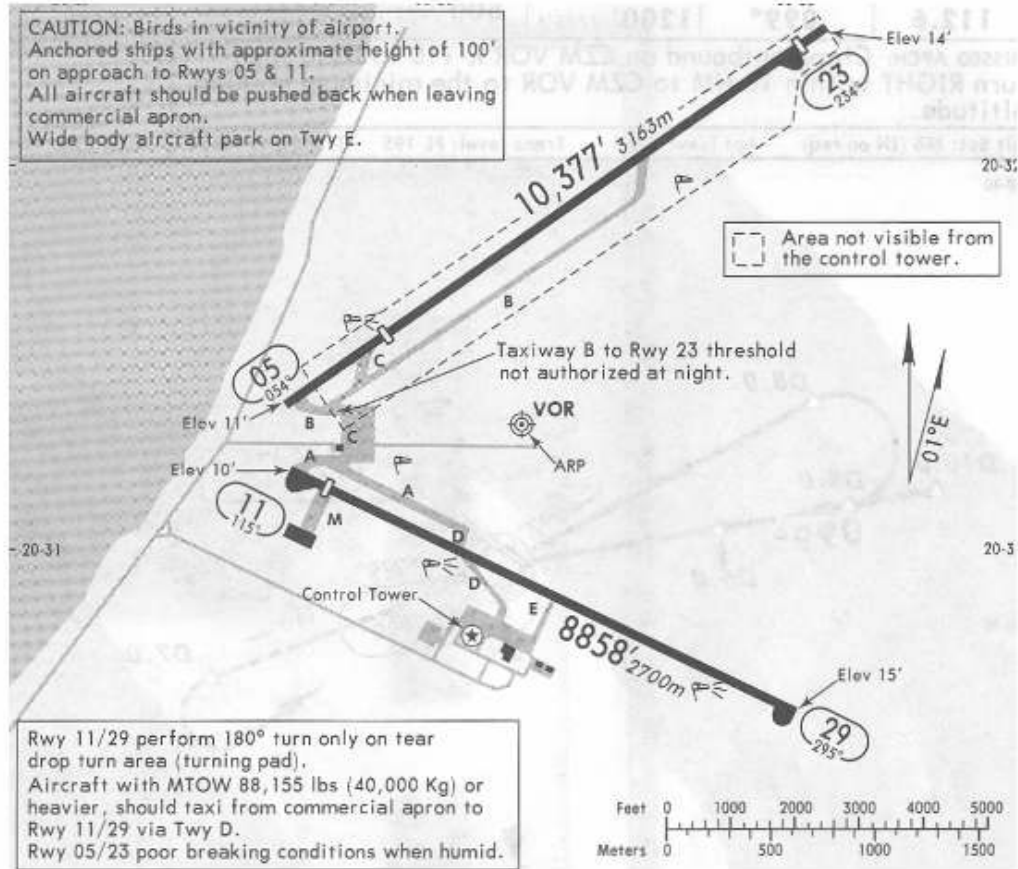


Apt Elev 15'
N20 31.3 W086 55.8

*COZUMEL Tower
118.1

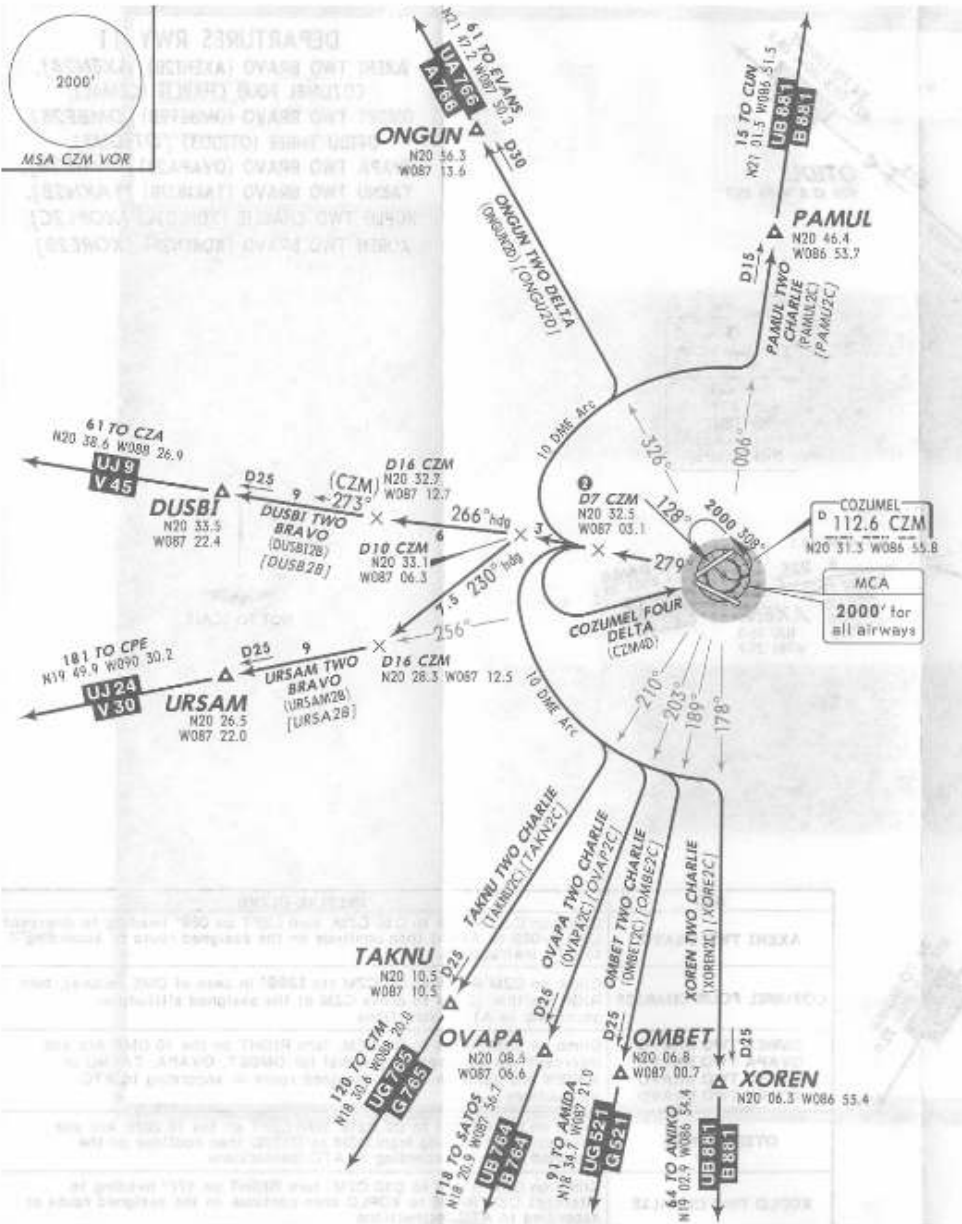
CANCUN Departure (R)
119.8



RWY	PAPI (angle 3.0°)	USABLE LENGTHS		WIDTH
		Threshold	Glide Slope	
05 23	PAPI (angle 3.0°)	7917' 2413m	1000'	148' 45m
		9885' 3013m		
11 29	HIRL PAPI-L (angle 3.0°)	8202' 2500m		148' 45m

NOT TO BE USED FOR ACTUAL NAVIGATION

*CANCUN Departure
119.8 *Apr Elev*
15' Trans level: FL195 Trans alt: 18500'



DEPARTURES RWY 29
 COZUMEL FOUR DELTA (CZM4D),
 DUSBI TWO BRAVO (DUSBI2B) [DUSB2B],
 OMBET TWO CHARLIE (OMBET2C) [OMBE2C],
 ONGUN TWO DELTA (ONGUN2D) [ONGU2D],
 OVAPA TWO CHARLIE (OVAPA2C) [OVAP2C],
 PAMUL TWO CHARLIE (PAMUL2C) [PAMU2C],
 TAKNU TWO CHARLIE (TAKNU2C) [TAKN2C],
 URSAM TWO BRAVO (URSAM2B) [URSA2B],
 XOREN TWO CHARLIE (XOREN2C) [XORE2C]

COZUMEL FOUR DELTA
 Turn LEFT at
 D7 CZM
 (or 1400'
 in case of
 DME failure).



SID	INITIAL CLIMB
COZUMEL FOUR DELTA	Climb on CDM R-279 to D7 CZM (to 1400' in case of DME failure), turn LEFT within 10 NM to cross CDM at the assigned altitude or according to ATC instructions.
DUSBI TWO BRAVO	Climb on CDM R-279 to D10 CZM, turn LEFT on 266° heading to intercept CDM R-273 to DUSBI then continue on the assigned route or according to ATC instructions.
OMBET TWO CHARLIE OVAPA TWO CHARLIE TAKNU TWO CHARLIE XOREN TWO CHARLIE	Climb on CDM R-279 to D7 CZM, turn LEFT on the 10 DME Arc and intercept the corresponding radial to OMBET, OVAPA, TAKNU, or XOREN then continue on the assigned route or according to ATC instructions.
ONGUN TWO DELTA PAMUL TWO CHARLIE	Climb on CDM R-279 to D7 CZM, turn RIGHT on the 10 DME Arc and intercept the corresponding radial to ONGUN or PAMUL then continue on the assigned route or according to ATC instructions.
URSAM TWO BRAVO	Climb on CDM R-279 to D10 CZM, turn LEFT on 230° heading to intercept CDM R-258 to URSAM then continue on the assigned route or according to ATC instructions.

NOT TO BE USED FOR ACTUAL NAVIGATION

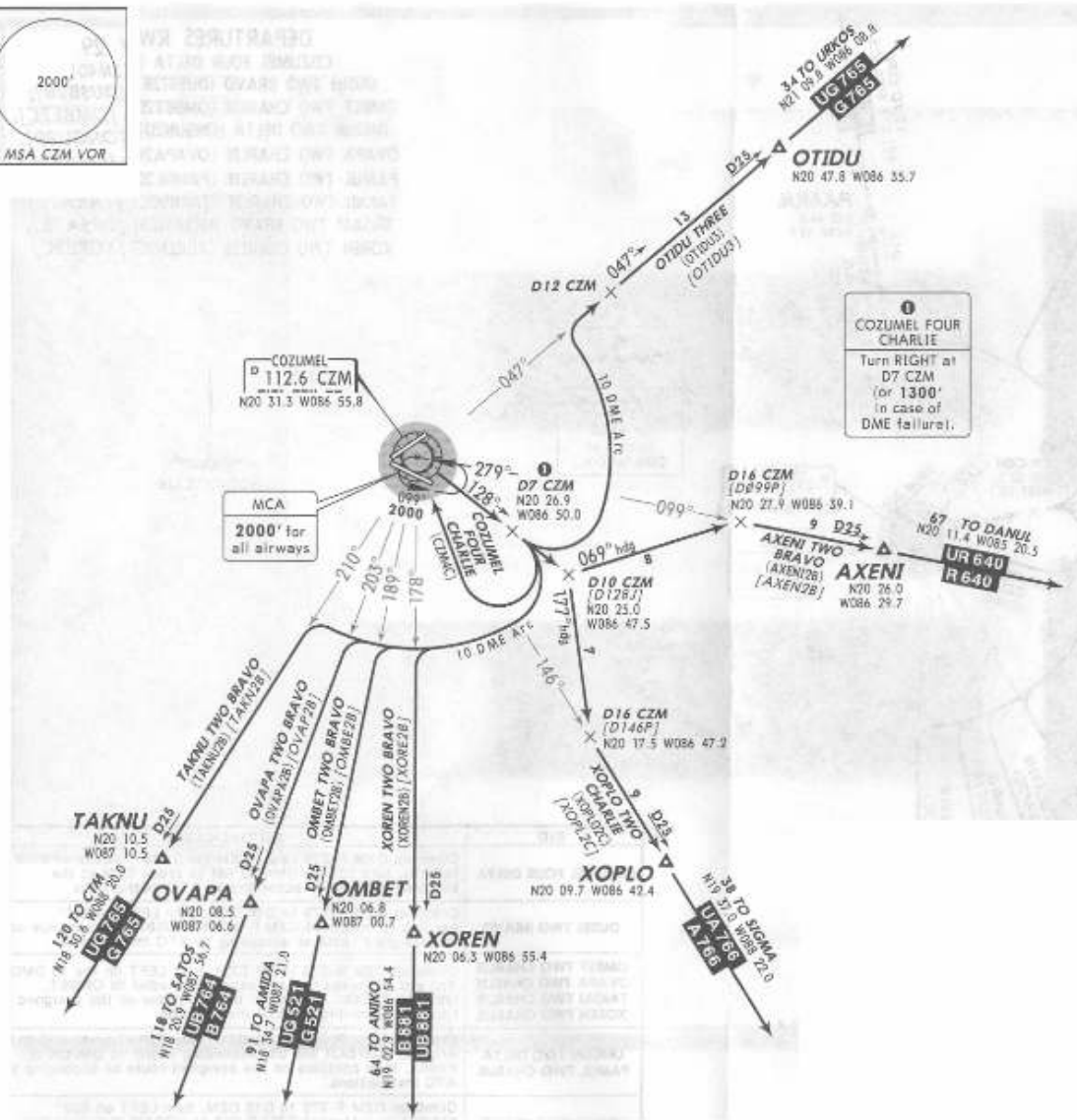
*CANCUN Departure
119.8

Apt Elev
15'

Trans level: FL195 Trans alt: 18500'

DEPARTURES RWY 11

- AXENI TWO BRAVO (AXENI2B) [AXEN2B],
- COZUMEL FOUR CHARLIE (CZM4C),
- OMBET TWO BRAVO (OMBET2B) [OMBE2B],
- OTIDU THREE (OTIDU3) [OTIDU3],
- OVAPA TWO BRAVO (OVAPA2B) [OVAP2B],
- TAKNU TWO BRAVO (TAKNU2B) [TAKN2B],
- XOPLO TWO CHARLIE (XOPL02C) [XOPL2C],
- XOREN TWO BRAVO (XOREN2B) [XORE2B]

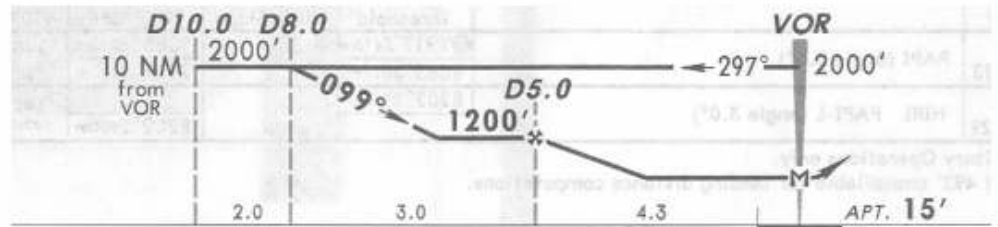
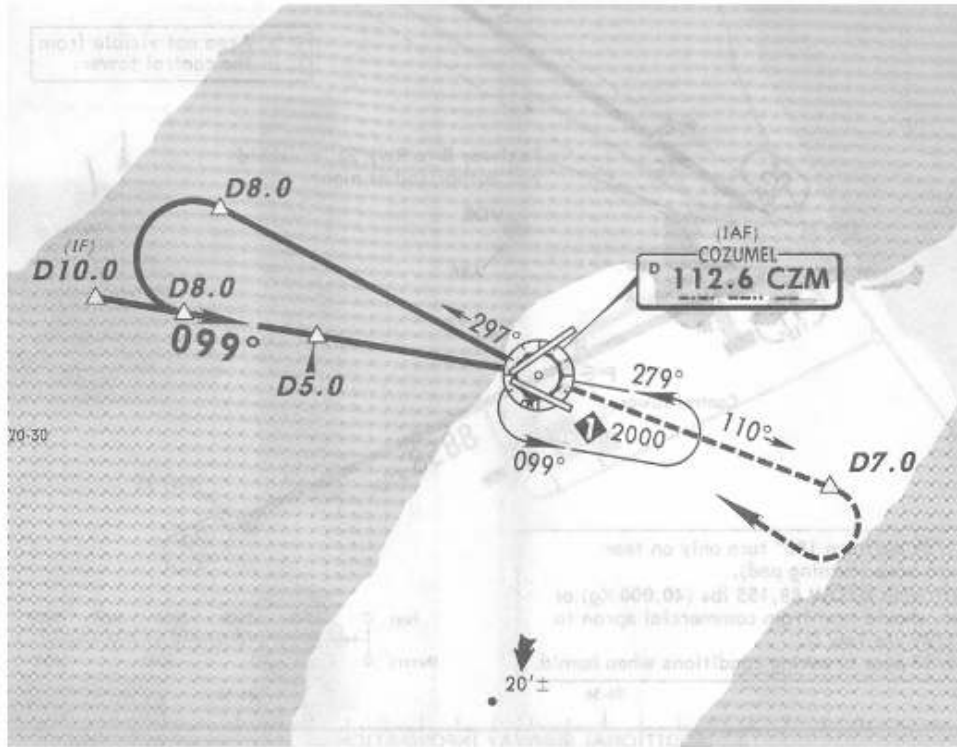


SID	INITIAL CLIMB
AXENI TWO BRAVO	Climb on CZM R-128 to D10 CZM, turn LEFT on 069° heading to intercept CZM R-099 to AXENI then continue on the assigned route or according to ATC instructions.
COZUMEL FOUR CHARLIE	Climb on CZM R-128 to D7 CZM (to 1300' in case of DME failure), turn RIGHT within 10 NM to cross CZM at the assigned altitude or according to ATC instructions.
OMBET TWO BRAVO OVAPA TWO BRAVO TAKNU TWO BRAVO XOREN TWO BRAVO	Climb on CZM R-128 to D7 CZM, turn RIGHT on the 10 DME Arc and intercept the corresponding radial for OMBET, OVAPA, TAKNU or XOREN and continue on the assigned route or according to ATC instructions.
OTIDU THREE	Climb on CZM R-128 to D7 CZM, turn LEFT on the 10 DME Arc and intercept 047° bearing from CZM to OTIDU then continue on the assigned route or according to ATC instructions.
XOPLO TWO CHARLIE	Climb on CZM R-128 to D10 CZM, turn RIGHT on 177° heading to intercept CZM R-146 to XOPLO then continue on the assigned route or according to ATC instructions.

NOT TO BE USED FOR ACTUAL NAVIGATION

CANCUN Approach (R)
120.4

*COZUMEL Tower
118.1



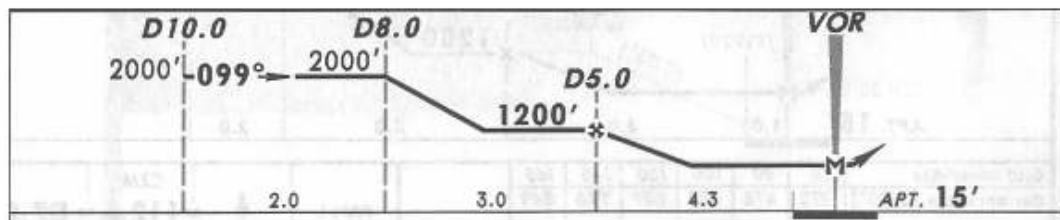
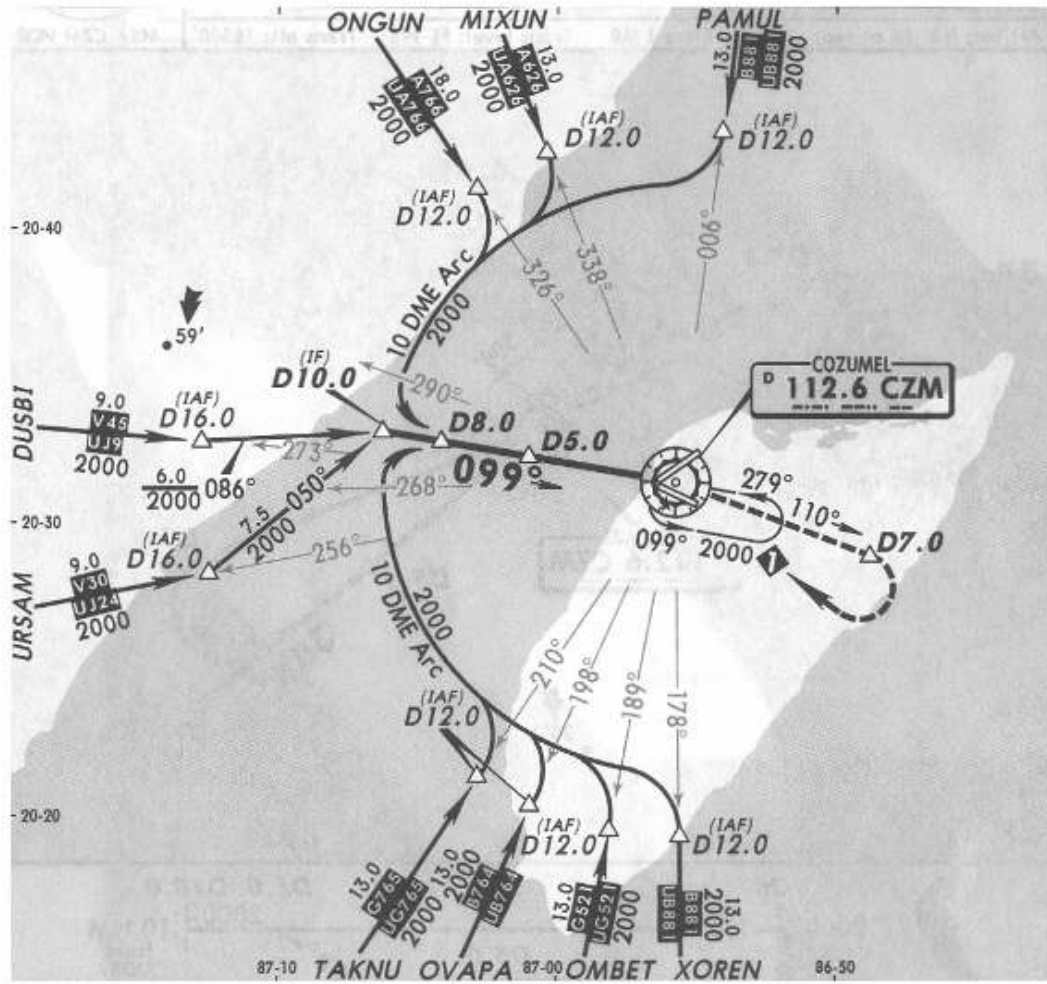
VOR CZM	Final Apch Crs	Minimum Alt D5.0	MDA(H)	Apt Elev 15'
112.6	099°	1200' (1185')	500' (485')	
<p>MISSED APCH: Climb outbound on CZM VOR R-110 to D7.0 then turn RIGHT within 10 NM to CZM VOR to the minimum holding altitude.</p>				
<p>Alt Set: MB (IN on req) Apt Elev: 1 MB Trans level: FL 195 Trans alt: 18500'</p>				

NOT TO BE USED FOR ACTUAL NAVIGATION

CANCUN Approach (R)
120.4

#COZUMEL Tower
118.1

9 MAR 07



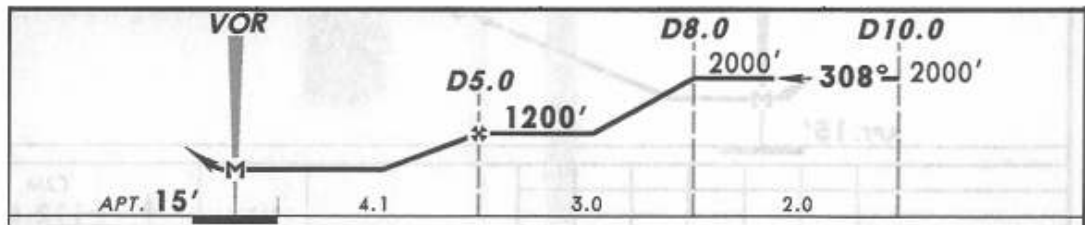
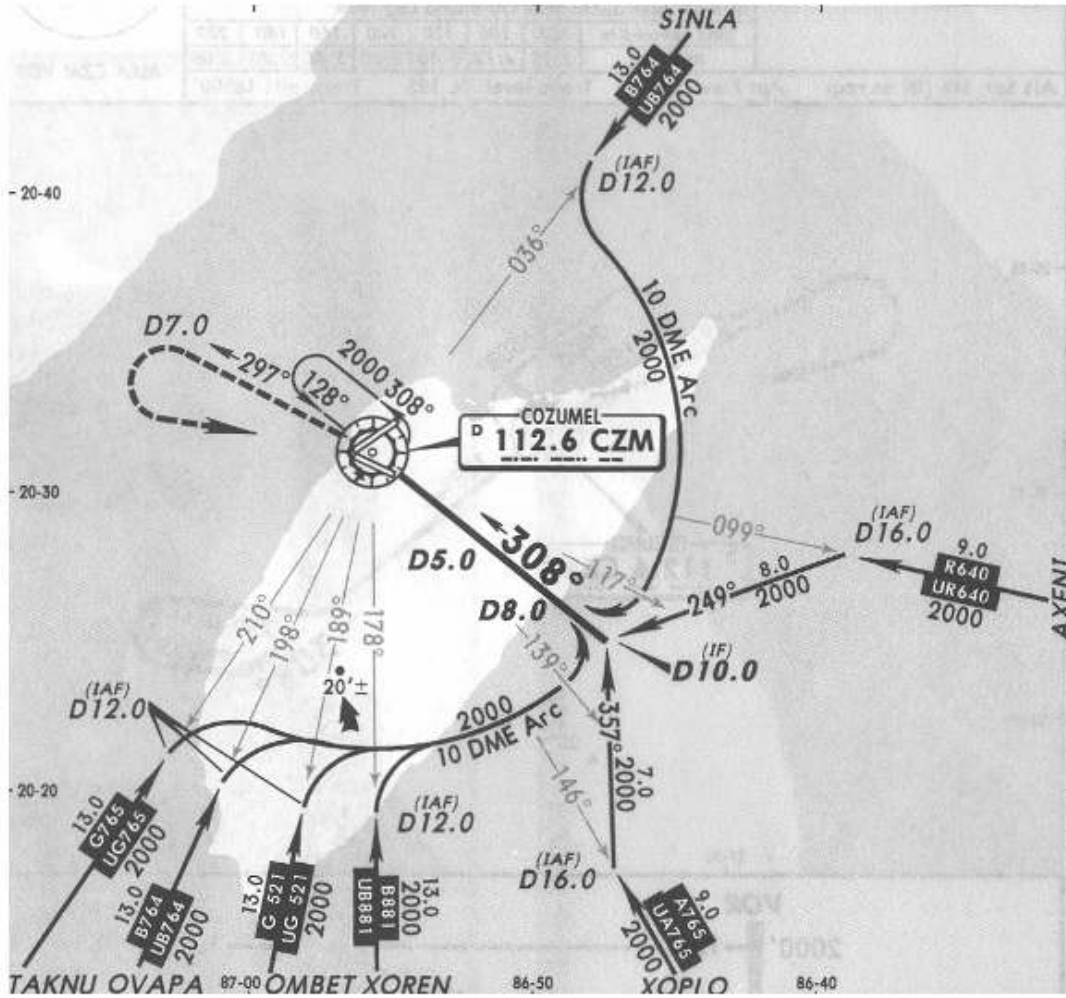
VOR CZM 112.6	Final Apch Crs 099°	Minimum Alt D5.0 1200' (1185')	MDA(H) 500' (485')	Apt Elev 15'
MISSED APCH: Climb outbound on CZM VOR R-110 to D7.0 then turn RIGHT within 10 NM to CZM VOR to the minimum holding altitude.				
Alt Set: MB (IN on req) Apt Elev: 1 MB Trans level: FL 195 Trans alt: 18500'				

NOT TO BE USED FOR ACTUAL NAVIGATION

CANCUN Approach (R)
120.4

*COZUMEL Tower
118.1

27 JUL 07



VOR CZM	Final Apch Crs	Minimum Alt D5.0	MDA(H)	Apt Elev 15'
112.6	308°	1200' (1185')	420' (405')	
MISSED APCH: Climb outbound on CZM VOR R-297 to D7.0 then turn LEFT within 10 NM to CZM VOR to the minimum holding altitude.				
Alt Set: MB (IN on req)		Apt Elev: 1 MB	Trans level: FL 195	Trans alt: 18500'

NOT TO BE USED FOR ACTUAL NAVIGATION

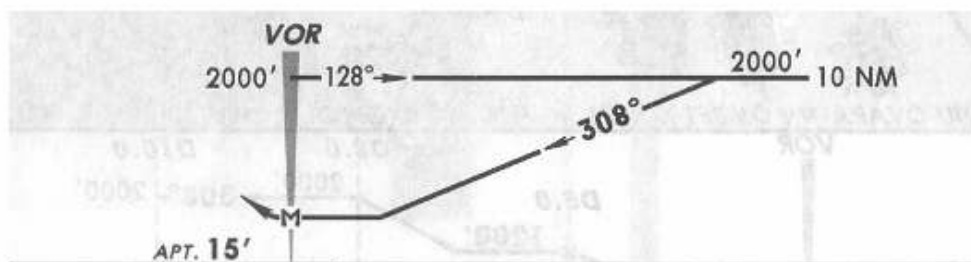
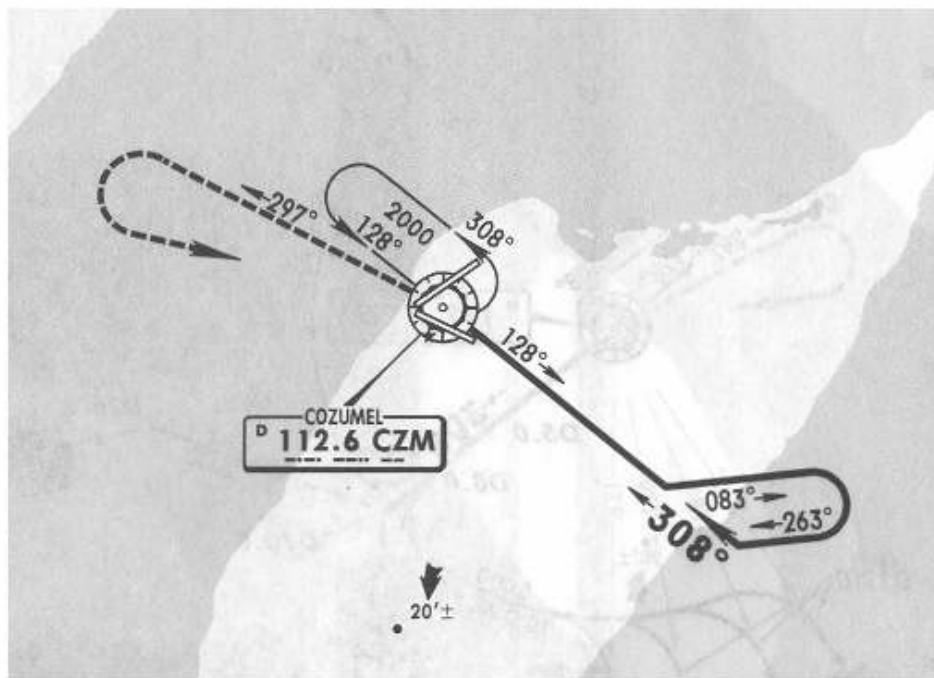
27 JUL 07

CANCUN Approach (R)

*COZUMEL Tower

120.4

118.1



VOR CZM 112.6	Final Apch Crs 308°	No FAF	MDA(H) 480' (465')	Apt Elev 15'
MISSED APCH: Climb outbound on CZM VOR R-297, turn LEFT within 10 NM to CZM VOR to the minimum holding altitude.				
Missed Approach: Max Outbound Leg 7NM				
Gnd speed-Kts				
80	100	120	140	160 180 200
min:sec				
5:15	4:12	3:30	3:00	2:38 2:20 2:06
Alt Set: MB (IN on req)		Apt Elev: 1 MB		Trans level: FL 195 Trans alt: 18500'

NOT TO BE USED FOR ACTUAL NAVIGATION