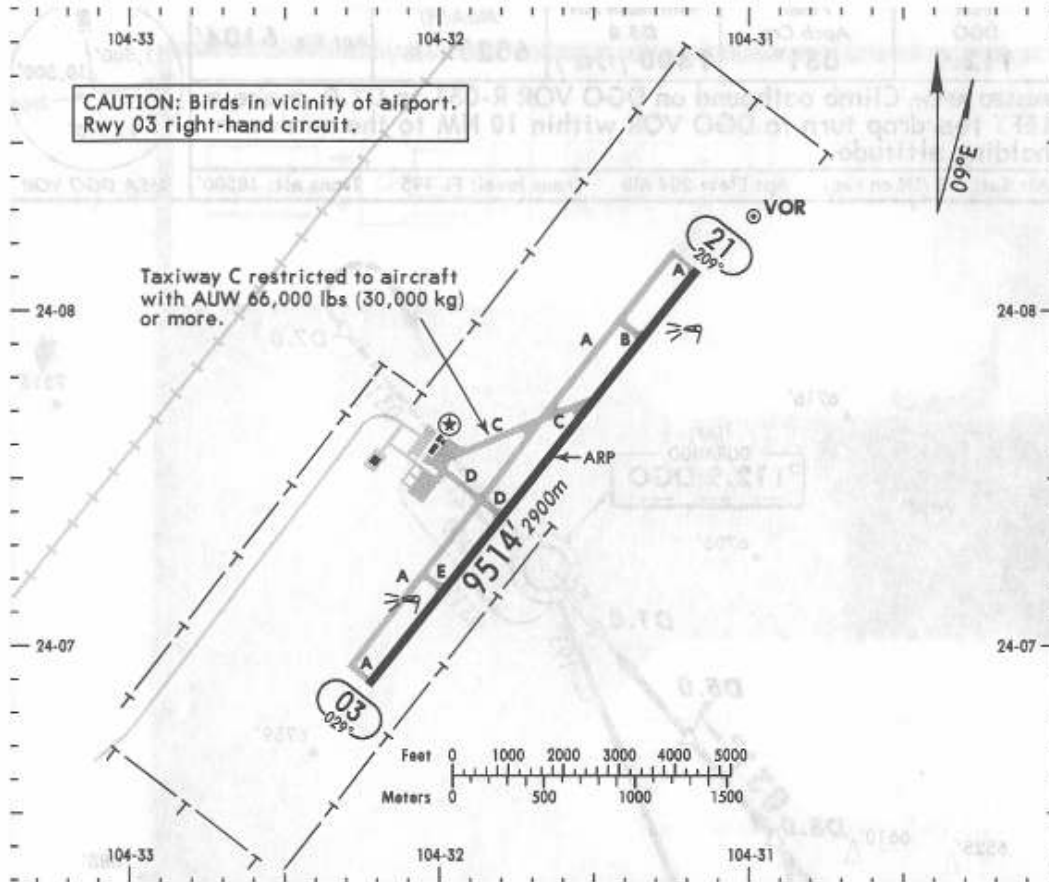


6 APR 07

Apt Elev **6104'**
N24 07.6 W104 31.6

*ATIS
122.3

*DURANGO Tower
118.1



RWY	ADDITIONAL RUNWAY INFORMATION		USABLE LENGTHS		TAKE-OFF	WIDTH
			LANDING	BEYOND		
			Threshold	Glide Slope		
03 21	HIRL	PAPI-L (angle 3.0°)				148' 45m

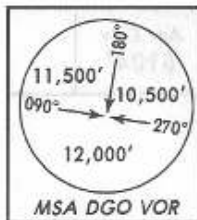
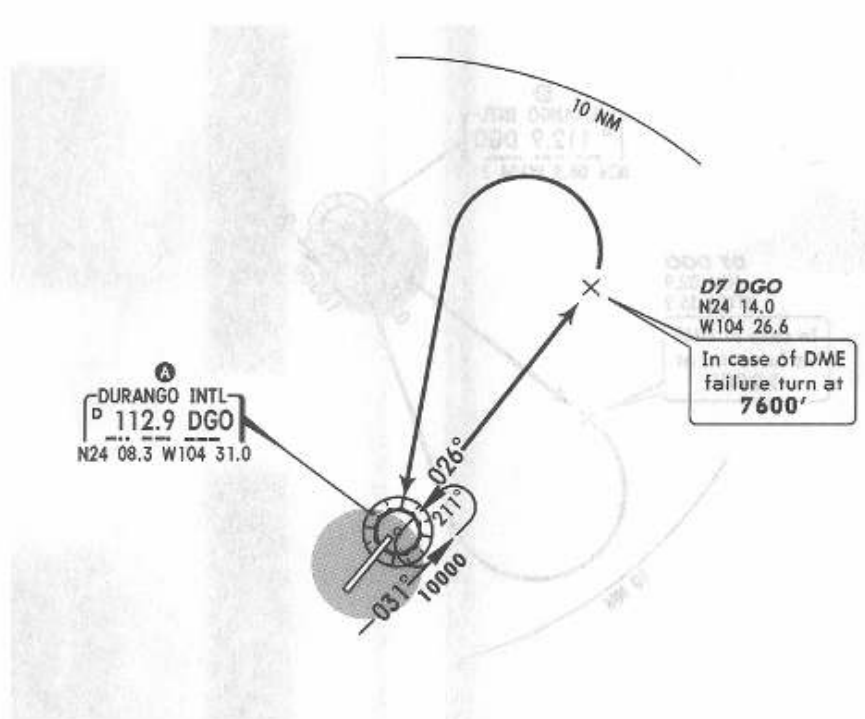
NOT TO BE USED FOR ACTUAL NAVIGATION

Apt Elev
6104'

Trans level: FL195 Trans alt: 18500'

14 JAN 05

DEPARTURE RWY 03
DURANGO TWO ALFA (DGO2A)



MINIMUM CROSSING ALTITUDE			
TRC	V-10	UJ-32	9300
TRC	V-37	UJ-37	8800
SLW		J-29	8700
CDR	V-12	UJ-6	9200
ZCL	V-27	UJ-5	9200
GDL		UJ-27	9700
TNY	V-37	UJ-37	9600
MZT	V-20	UJ-20, J-29	9800
CUL	V-10-12	UJ-6-32	9500
CHX		UJ-5	9200
DEL		UJ-27	9500
AGU		UJ-63	9400

INITIAL CLIMB

Climb on DGO R-026 to D7 DGO (to 7600' in case of DME failure), then LEFT turn within 10 NM to DGO to the assigned MCA ^A or follow ATC instructions.

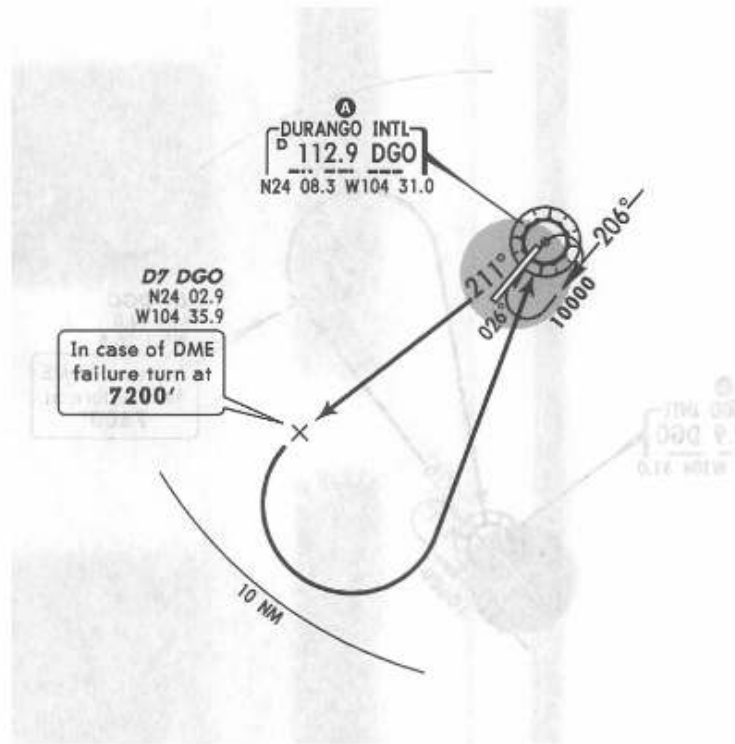
NOT TO BE USED FOR ACTUAL NAVIGATION

Apt Elev
6104'

Trans level: FL195 Trans alt: 18500'

14 JAN 05

DEPARTURE RWY 21
DURANGO TWO BRAVO (DGO2B)



MINIMUM CROSSING ALTITUDE ^A			
TRC	V-10	UJ-32	9300
TRC	V-37	UJ-37	8800
SLW		J-29	8700
CDR	V-12	UJ-6	9200
ZCL	V-27	UJ-5	9200
GDL		UJ-27	9700
TNY	V-37	UJ-37	9600
MZT	V-20	UJ-20, J-29	9800
CUL	V-10-12	UJ-6-32	9500
CHX		UJ-5	9200
DEL		UJ-27	9500
AGU		UJ-63	9400

INITIAL CLIMB
Climb on DGO R-211 to D7 DGO (to 7200' in case of DME failure), then LEFT turn within 10 NM to DGO to the assigned MCA ^A or follow ATC instructions.

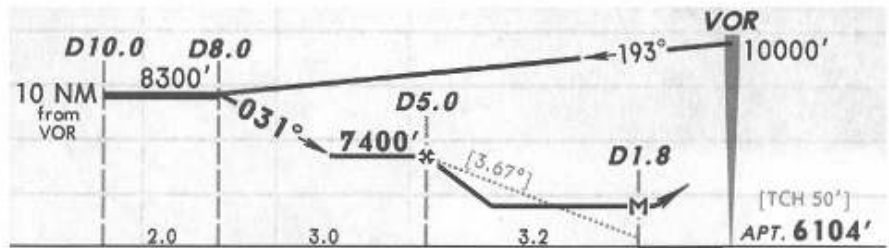
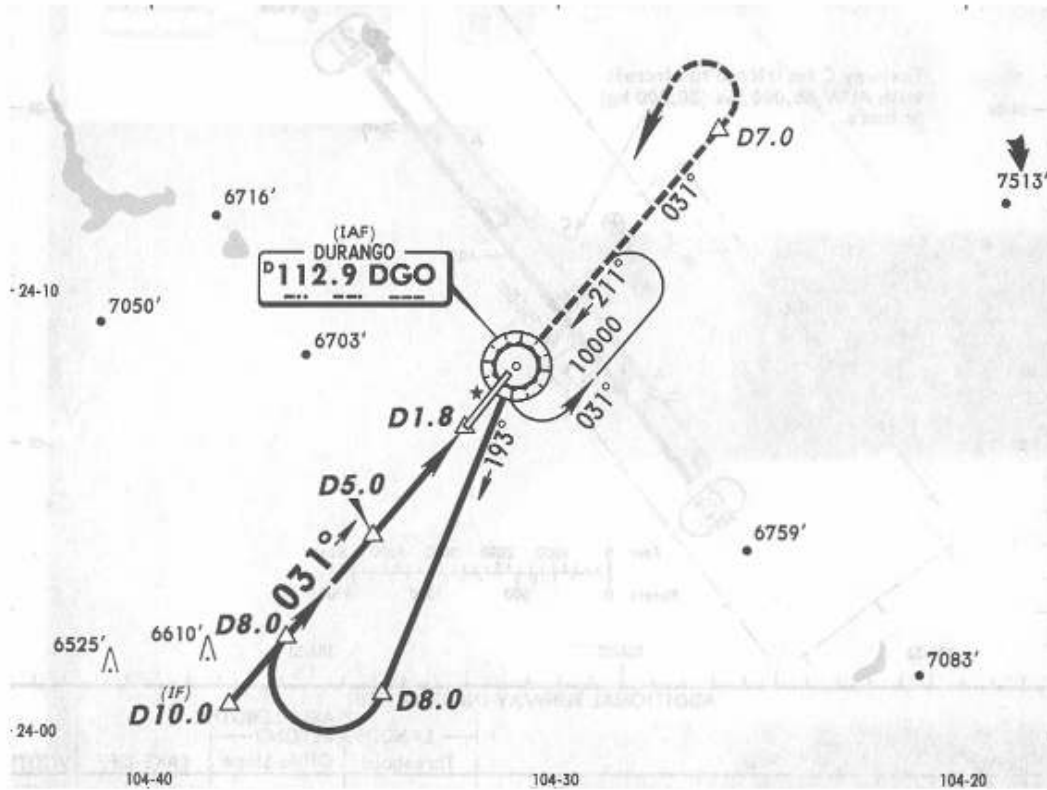
NOT TO BE USED FOR ACTUAL NAVIGATION

*ATIS
122.3

*DURANGO Tower
118.1

6 APR 07

VOR DGO 112.9	Final Apch Crs 031°	Minimum Alt D5.0 7400' (1296')	MDA(H) 6520' (416')	Apt Elev 6104'
----------------------------	----------------------------------	---	-------------------------------	-----------------------



MISSED APCH: Climb outbound on DGO VOR R-031 to D7.0, make a LEFT teardrop turn to DGO VOR within 10 NM to the minimum holding altitude.

Alt Ser: MB (IN on req) Apt Elev: 204 MB Trans level: FL 195 Trans alt: 18500'

*ATIS

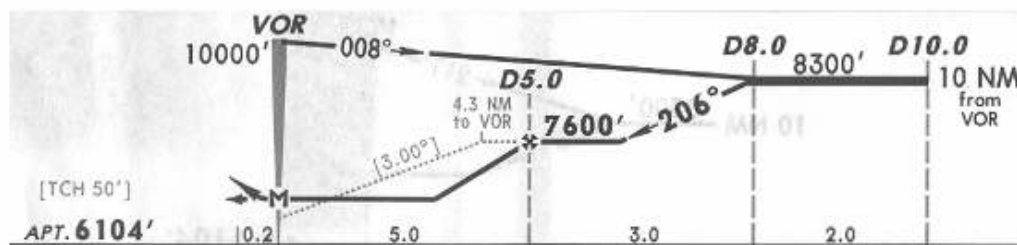
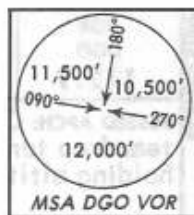
*DURANGO Tower

6 APR 07

122.3

118.1

VOR DGO 112.9	Final Apch Crs 206°	Minimum Alt D5.0 7600' (1496')	MDA(H) 6520' (416')	Apt Elev 6104'
----------------------------	----------------------------------	---	-------------------------------	-----------------------



MISSED APCH: Climb outbound on DGO VOR R-211 to D7.0, make a LEFT teardrop turn to DGO VOR within 10 NM to the minimum holding altitude.

Alt Set: MB (IN on req) Apt Elev: 204 MB Trans level: FL 195 Trans alt: 18500'

NOT TO BE USED FOR ACTUAL NAVIGATION

*ATIS

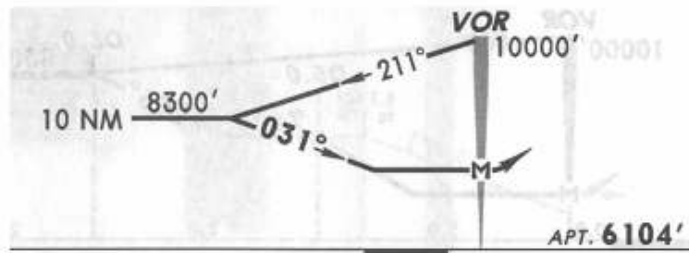
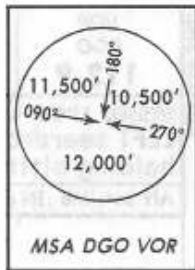
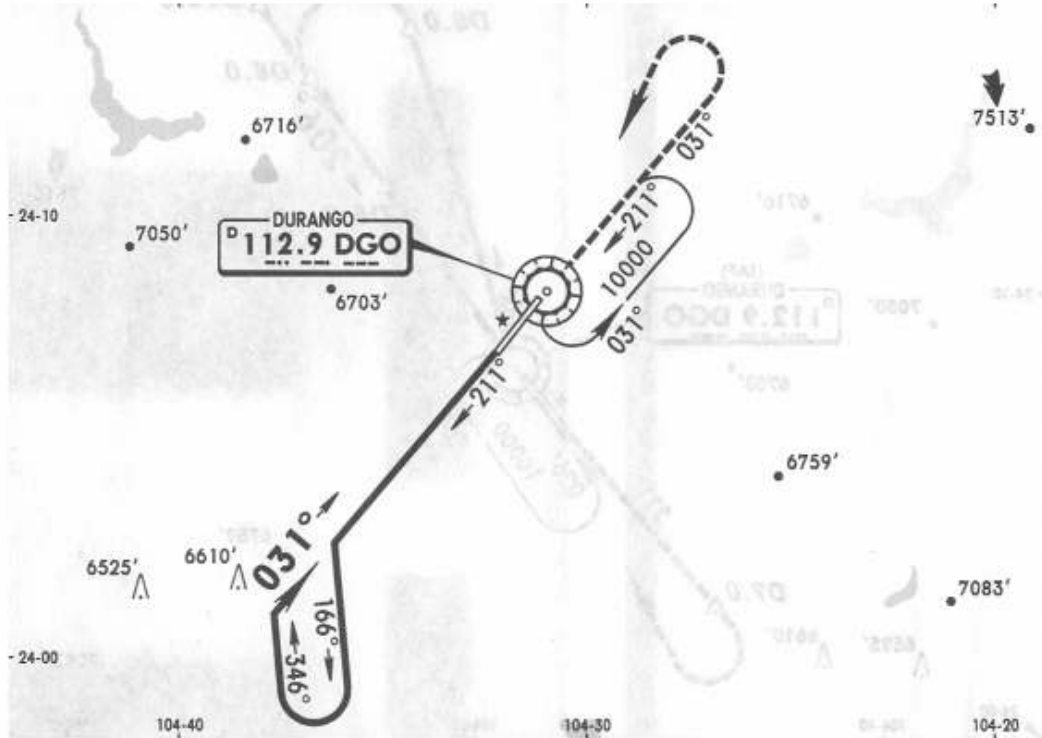
*DURANGO Tower

6 APR 07

122.3

118.1

VOR DGO 112.9	Final Apch Crs 031°	No FAF	MDA(H) 6740' (636')	Apt Elev 6104'
----------------------------	----------------------------------	--------	-------------------------------	-----------------------



MISSED APCH: Climb outbound on DGO VOR R-031, make a LEFT teardrop turn to DGO VOR within 10 NM to the minimum holding altitude.

Missed Approach: Max Outbound Leg 7NM

Gnd speed-Kts	80	100	120	140	160	180	200
min:sec	5:15	4:12	3:30	3:00	2:38	2:20	2:06

Alt Set: MB (IN on req) Apt Elev: 204 MB Trans level: FL 195 Trans alt: 18500'

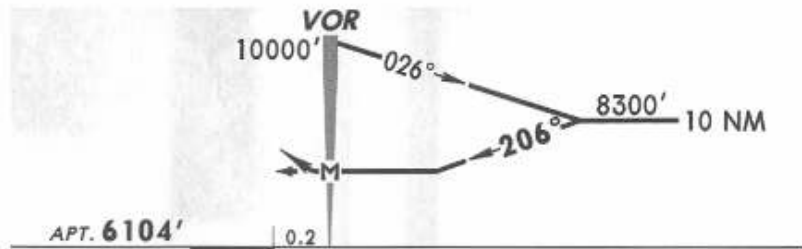
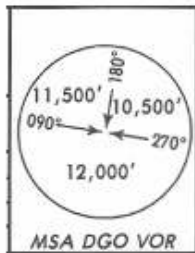
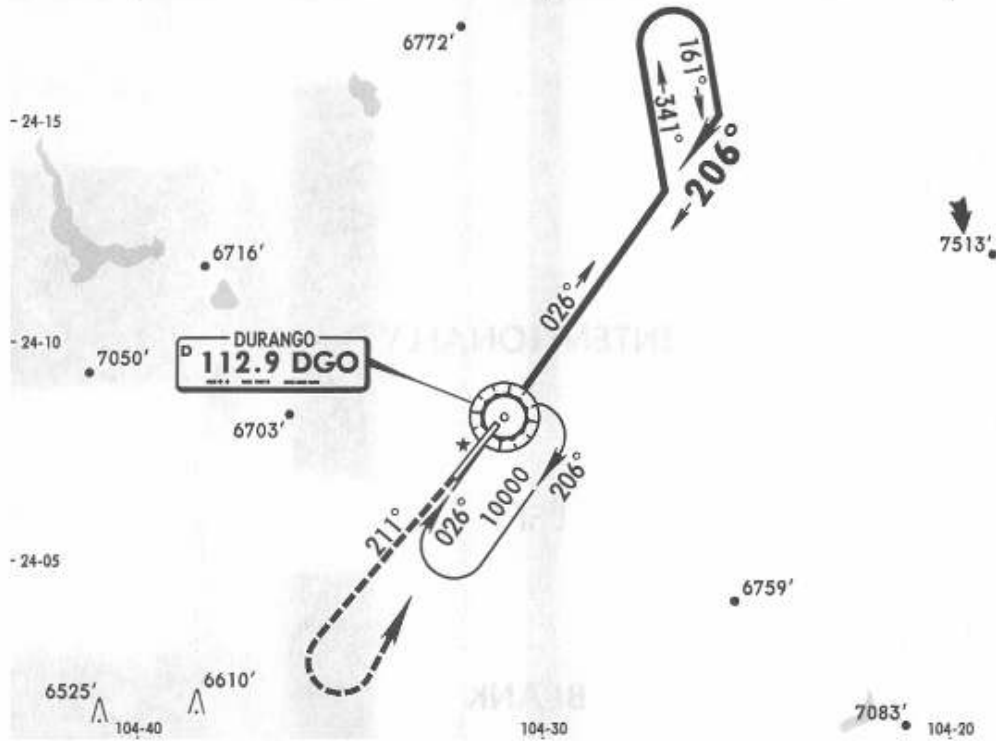
NOT TO BE USED FOR ACTUAL NAVIGATION

*ATIS
122.3

*DURANGO Tower
118.1

6 APR 07

VOR DGO 112.9	Final Apch Crs 206°	No FAF	MDA(H) 6720' (616')	Apt Elev 6104'
----------------------------	----------------------------------	--------	-------------------------------	-----------------------



MISSED APCH: Climb outbound on DGO VOR R-211, make a LEFT teardrop turn to DGO VOR within 10 NM to the minimum holding altitude.

Missed Approach: Max Outbound Leg 7NM

Gnd speed-Kts	80	100	120	140	160	180	200
min:sec	5:15	4:12	3:30	3:00	2:38	2:20	2:06

Alt Set: MB (IN on req) Apt Elev: 204 MB Trans level: FL 195 Trans alt: 18500'

NOT TO BE USED FOR ACTUAL NAVIGATION