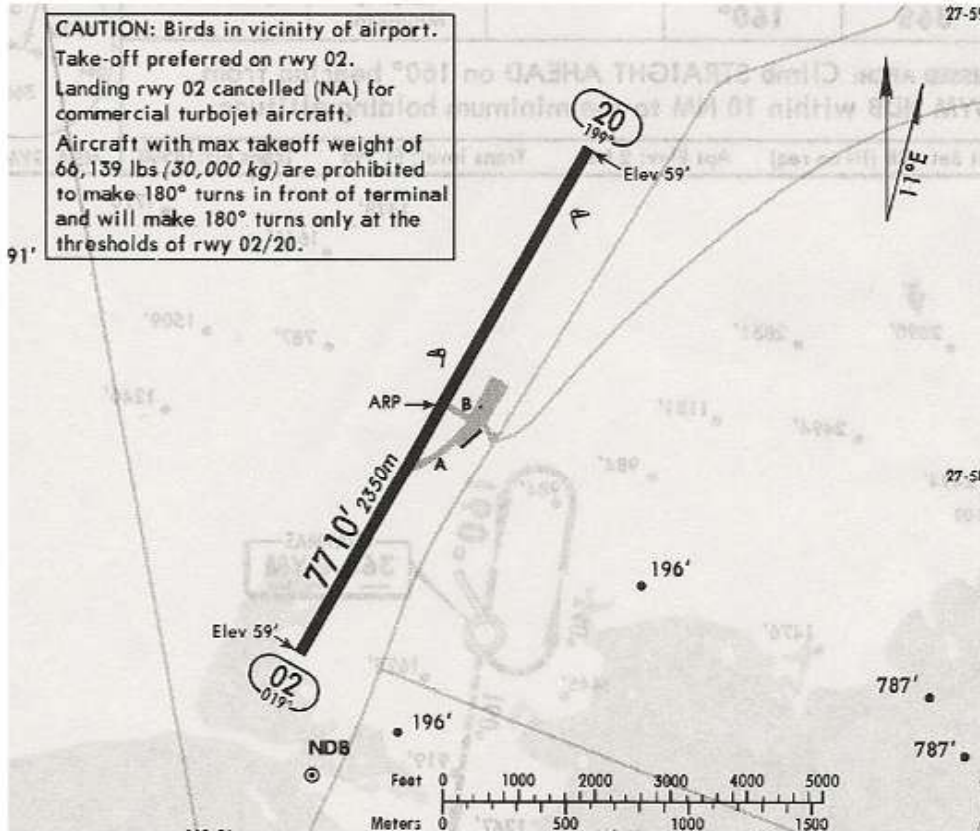


Apt Elev **59'**
N27 58.2 W110 55.4

*GUAYMAS Tower 118.6



RWY	ADDITIONAL RUNWAY INFORMATION	USABLE LENGTHS		TAKE-OFF	WIDTH
		Threshold	Landing Beyond Glide Slope		
02 20	PAPI-L (angle 3.0°)				148' 45m

NOT TO BE USED FOR ACTUAL NAVIGATION

*HERMOSILLO SOUTH Approach

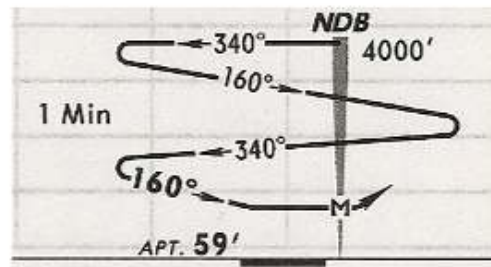
121.3

*GUAYMAS Tower

118.6

5 NOV 04

NDB GYM 368	Final Apch Crs 160°	No FAF	MDA(H) Refer to Minimums	Apt Elev 59'
--------------------------	----------------------------------	--------	--------------------------------	---------------------



MISSED APCH: Climb STRAIGHT AHEAD on 160° bearing from GYM NDB within 10 NM to the minimum holding altitude.

Alt Set: MB (IN on req) Apt Elev: 2 MB Trans level: FL 195 Trans alt: 18500'

NOT TO BE USED FOR ACTUAL NAVIGATION