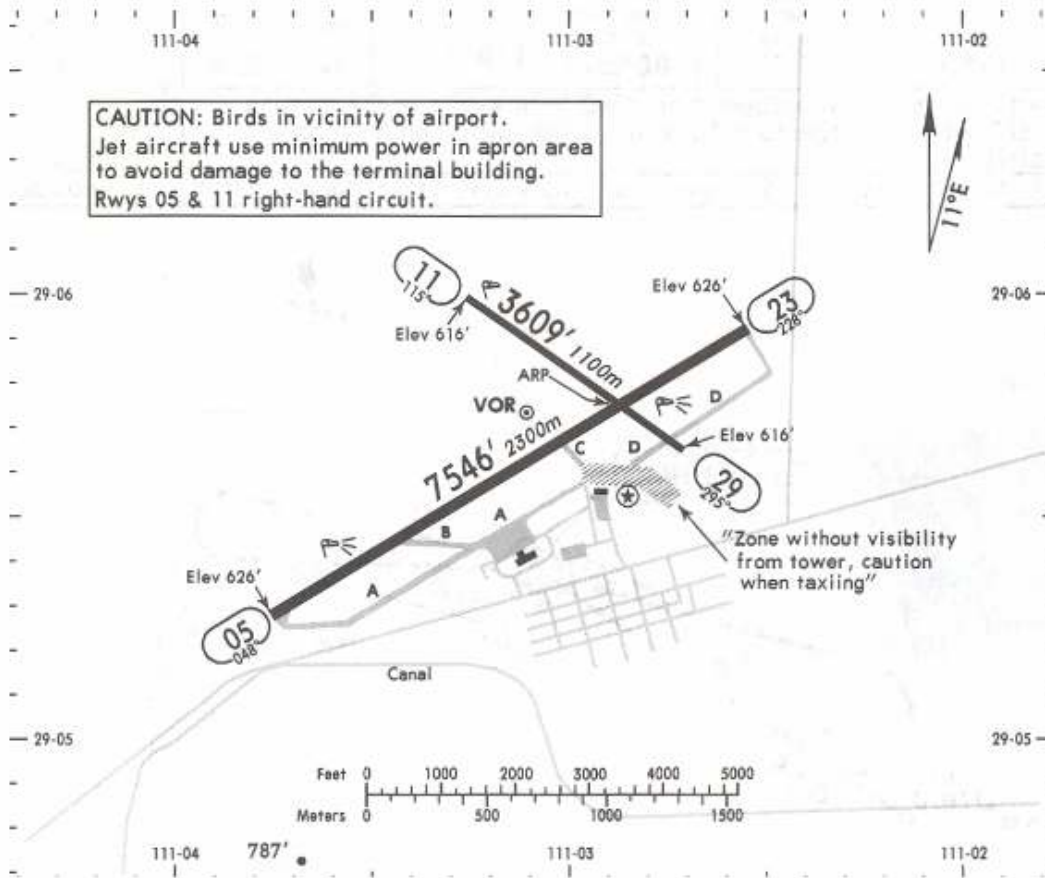


Apt Elev **627'**  
N29 05.7 W111 02.9

\*ATIS  
127.7

\*HERMOSILLO Tower  
118.7



DEPARTURE PROCEDURE: For departures and MCA's see Hermosillo 10-3 and 10-3A.

RWY	ADDITIONAL RUNWAY INFORMATION		USABLE LENGTHS		WIDTH
	HIRL PAPI (angle 3.0°)	LANDING BEYOND		TAKE-OFF	
		Threshold	Glide Slope		
05					148' 45m
23					
11					98' 30m
29	Night operations not authorized				

NOT TO BE USED FOR ACTUAL NAVIGATION

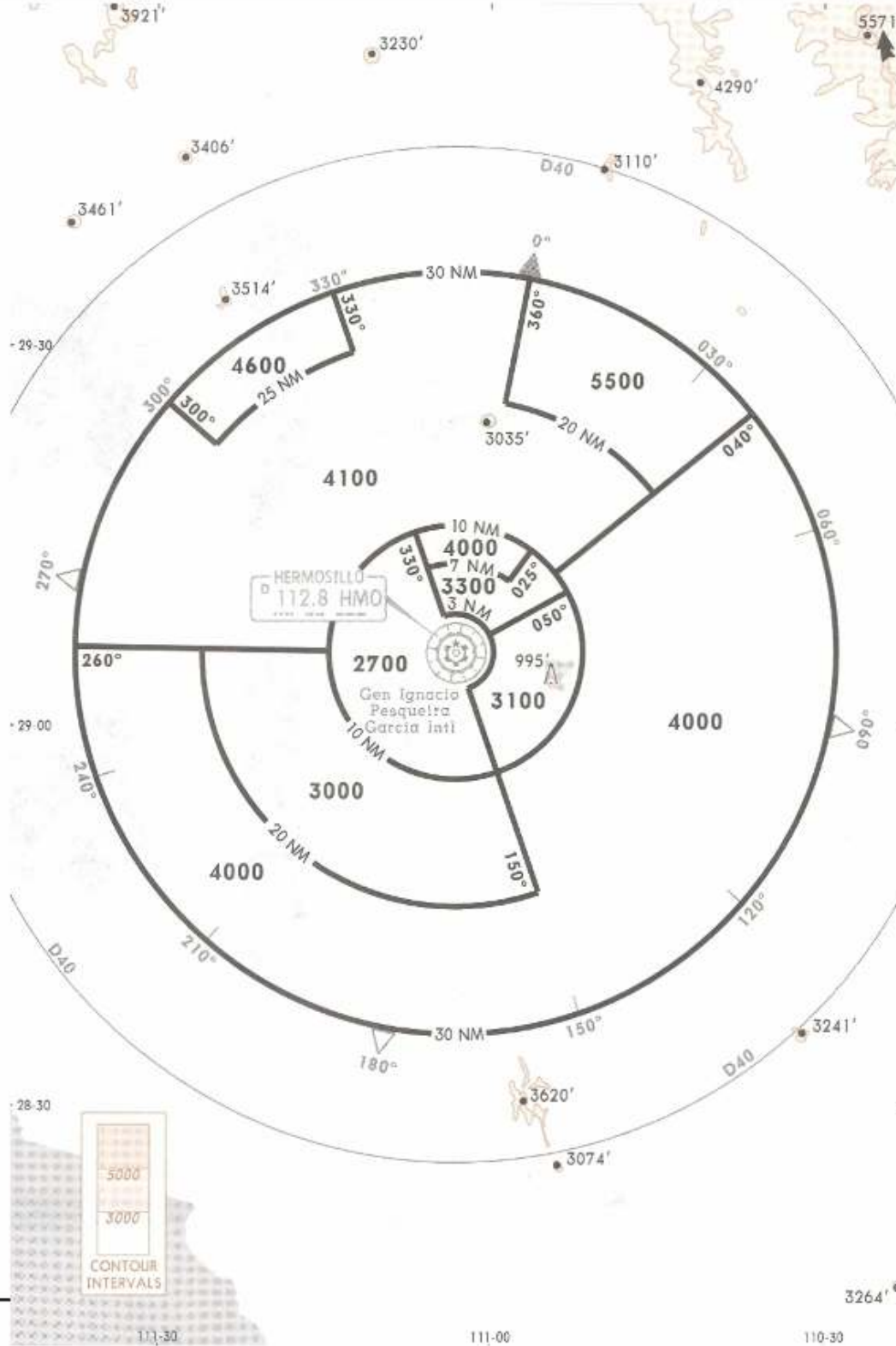
\*HERMOSILLO Approach

121.4

Apt Elev

627'

8 FEB 08  
Eff 14 Feb



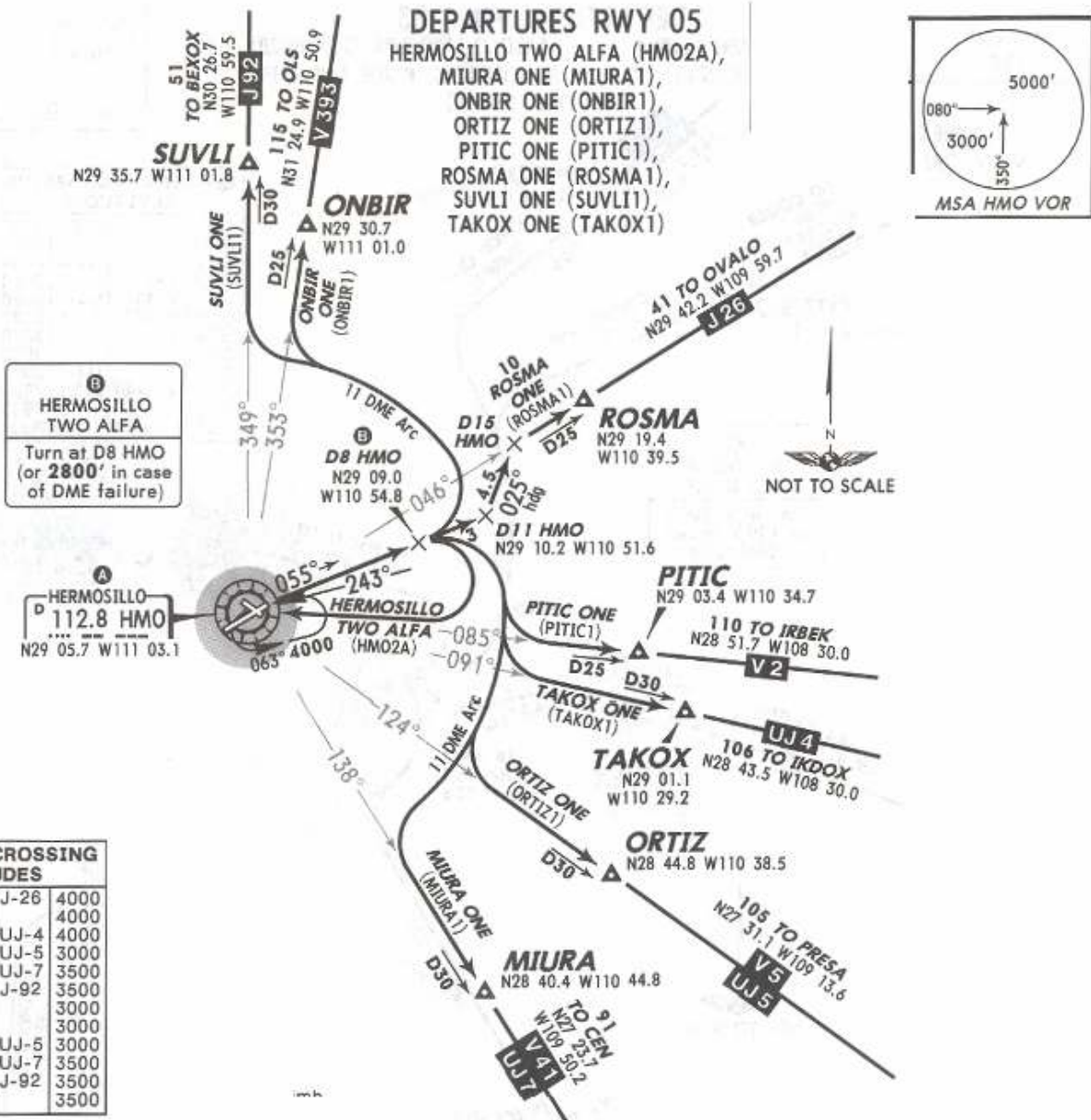
Alt Set: MB (IN on Req) Trans level: FL 195 Trans alt: 18500'  
 1. These are the lowest MVAs that can be assigned by the controller in a section when Radar control procedures (vectors) are applied, without affecting routes and procedures with lower minimums. 2. All aircraft operating under VFR within this TMA should have transponder mode 3 A/C with 4096 code capabilities.

**NOT TO BE USED FOR ACTUAL NAVIGATION**

Apt Elev  
627'

Trans level: FL195 Trans alt: 18500'

9 FEB 07



**A MINIMUM CROSSING ALTITUDES**

CJS		J-26	4000
CUW	V-2		4000
DEL		UJ-4	4000
CHX	V-5	UJ-5	3000
CEN	V-41	UJ-7	3500
GYM	V-393	J-92	3500
SRL	V-4		3000
GRN	V-2		3000
TIJ		UJ-5	3000
PPE	V-5-41	UJ-7	3500
TUS		J-92	3500
OLS	V-393		3500

These SIDs require a minimum climb gradient of 280' per NM until 7000'.

Gnd speed-KT	75	100	150	200	250	300
280' per NM	350	467	700	933	1167	1400

SID	INITIAL CLIMB
<b>HERMOSILLO TWO ALFA</b>	Climb on HMO R-055 to D8 HMO, (or 2800' in case of DME failure), then turn RIGHT within 11 NM and return to HMO. Depart HMO at the MCA A of the assigned route or in accordance with ATC instructions.
<b>MIURA ONE, ORTIZ ONE, PITIC ONE, TAKOX ONE</b>	Climb on HMO R-055 to D8 HMO, then turn RIGHT and proceed on HMO 11 DME Arc until intercepting the corresponding radial from HMO. Continue to the fix of the assigned route or in accordance with ATC instructions.
<b>ONBIR ONE, SUVLI ONE</b>	Climb on HMO R-055 to D8 HMO, then turn LEFT and proceed on HMO 11 DME Arc until intercepting the corresponding radial from HMO to ONBIR or SUVLI. Continue on assigned route or in accordance with ATC instructions.
<b>ROSMA ONE</b>	Climb on HMO R-055 to D11 HMO, then turn LEFT and proceed on 025° heading and intercept HMO R-046 to ROSMA or in accordance with ATC instructions.

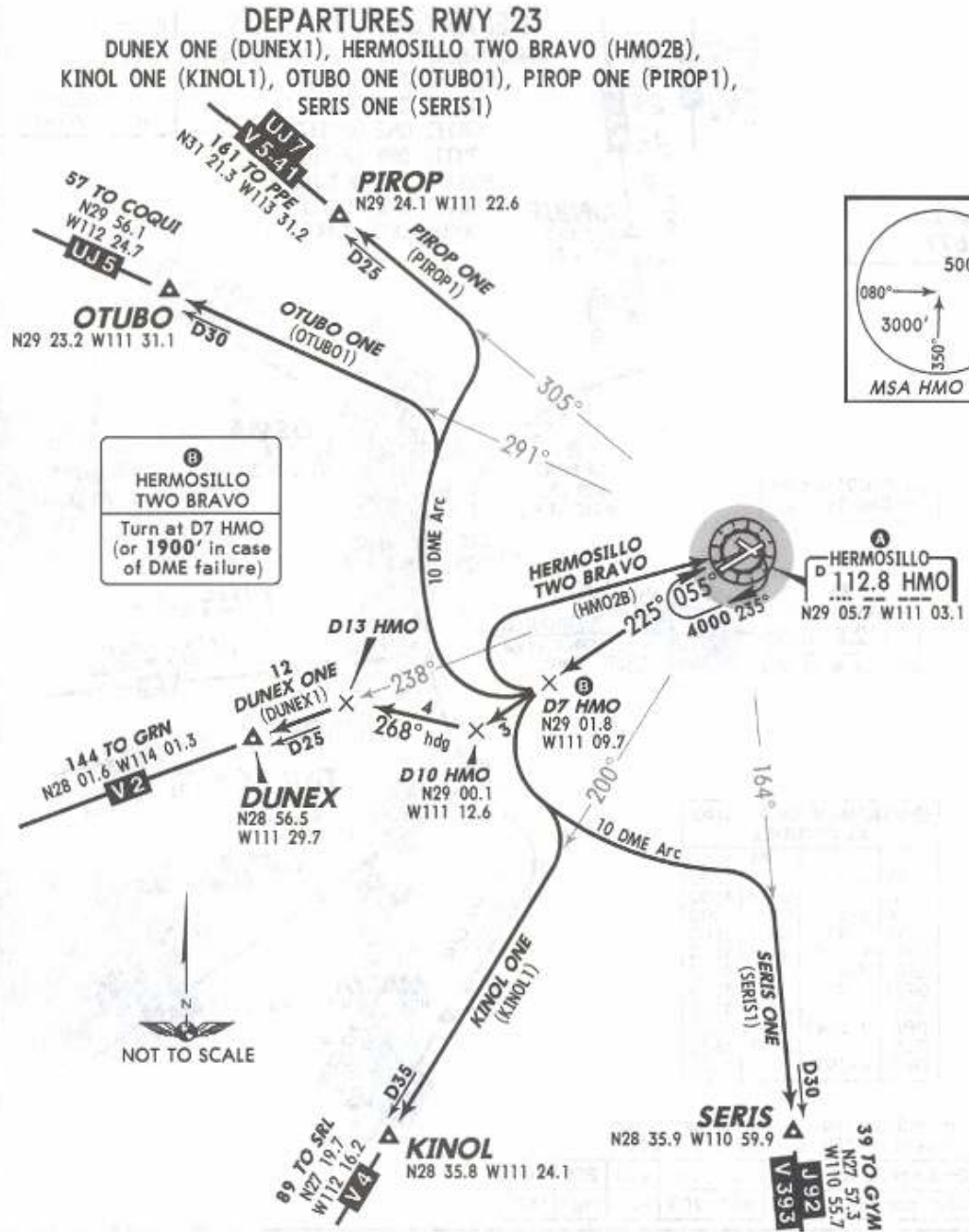
NOT TO BE USED FOR ACTUAL NAVIGATION



Apt Elev  
627'

Trans level: FL195 Trans alt: 18500'

9 FEB 07

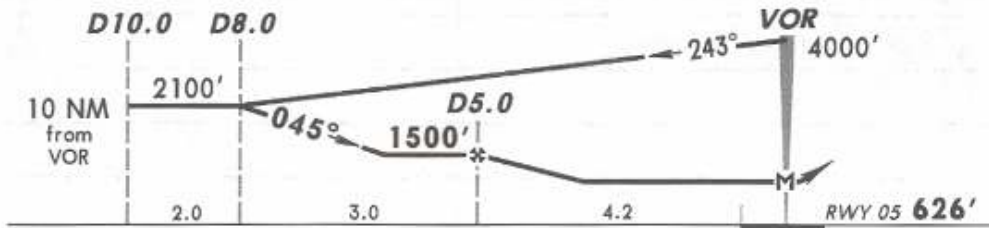
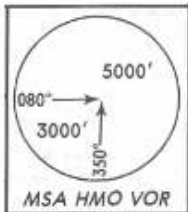
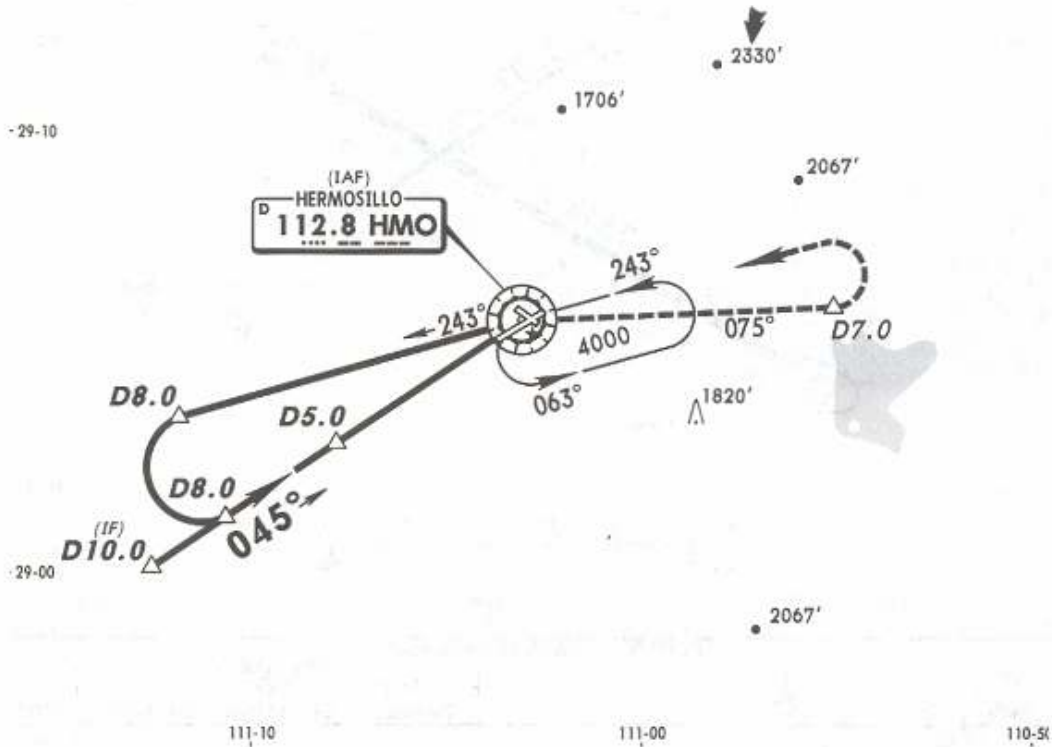


SID	INITIAL CLIMB
DUNEX ONE	Climb on HMO R-225 to D10 HMO, turn RIGHT and proceed on 268° heading and intercept HMO R-238 to DUNEX or in accordance with ATC instructions.
HERMOSILLO TWO BRAVO	Climb on HMO R-225 to D7 HMO (or 1900' in case of DME failure), then turn RIGHT within 10 NM and return to HMO. Depart HMO at the MCA A of the assigned route or in accordance with ATC instructions.
KINOL ONE, SERIS ONE	Climb on HMO R-225 to D7 HMO, then turn LEFT and proceed on HMO 10 DME Arc until intercepting the corresponding radial from HMO to KINOL or SERIS. Continue on assigned route or in accordance with ATC instructions.
OTUBO ONE, PIROP ONE	Climb on HMO R-225 to D7 HMO, then turn RIGHT and proceed on HMO 10 DME Arc until intercepting the corresponding radial from HMO to OTUBO or PIROP. Continue on assigned route or in accordance with ATC instructions.

NOT TO BE USED FOR ACTUAL NAVIGATION

\*ATIS 127.7      \*HERMOSILLO Approach 121.4      \*HERMOSILLO Tower 118.7

VOR HMO <b>112.8</b>	Final Apch Crs <b>045°</b>	Minimum Alt D5.0 <b>1500'</b> (874')	MDA(H) <b>1100'</b> (474')	Apt Elev 627' Rwy 05 <b>626'</b>
-------------------------	-------------------------------	--	-------------------------------	-------------------------------------



**MISSED APCH:** Climb outbound on HMO VOR R-075 to D7.0, turn LEFT within 10 NM to HMO VOR to the minimum holding altitude.

Alt Set: MB (IN on req)      Rwy Elev: 22 MB      Trans level: FL195      Trans alt: 18500'

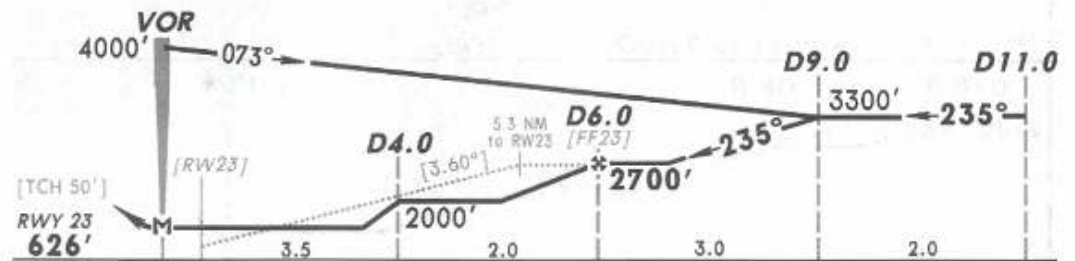
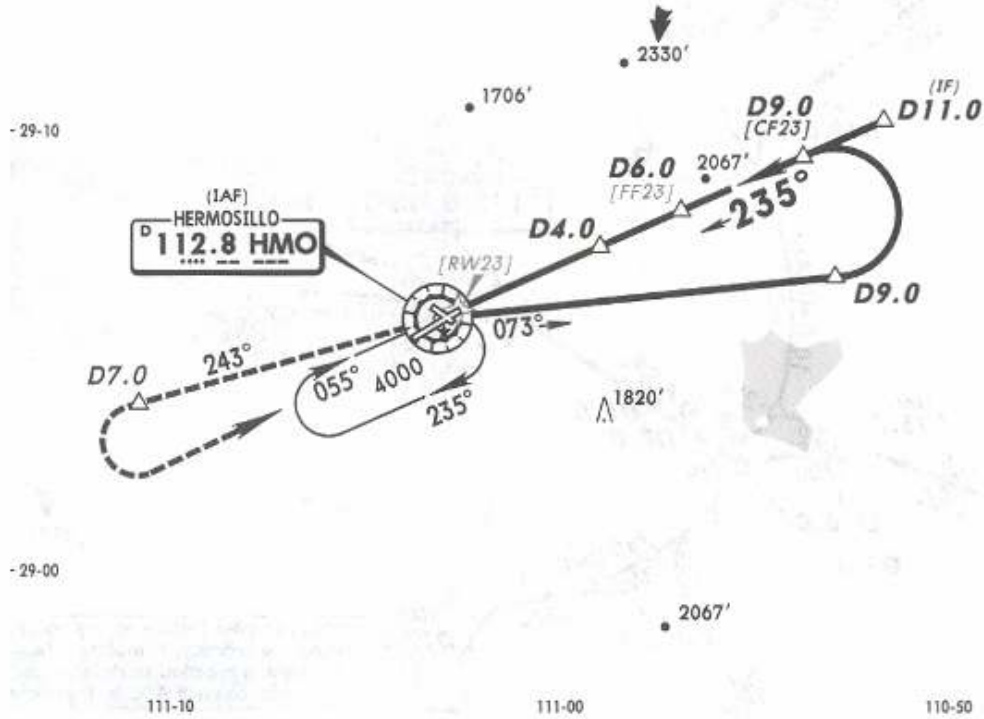
\*ATIS  
127.7

\*HERMOSILLO Approach  
121.4

\*HERMOSILLO Tower  
118.7

6 OCT 06

VOR HMO	Final Apch Crs	Minimum Alt D6.0	MDA(H)	Apt Elev 627'
<b>112.8</b>	<b>235°</b>	<b>2700'</b> (2074')	<b>1080'</b> (454')	Rwy 23 <b>626'</b>



**MISSED APCH:** Climb outbound on HMO VOR R-243 to D7.0, turn LEFT within 10 NM. Return to HMO VOR at the minimum holding altitude.

Alt Set: MB (IN on req) Rwy Elev: 23 MB Trans level: FL 195 Trans alt: 18500'

**NOT TO BE USED FOR ACTUAL NAVIGATION**





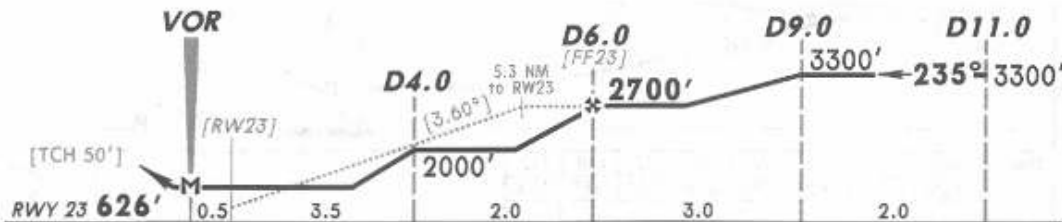
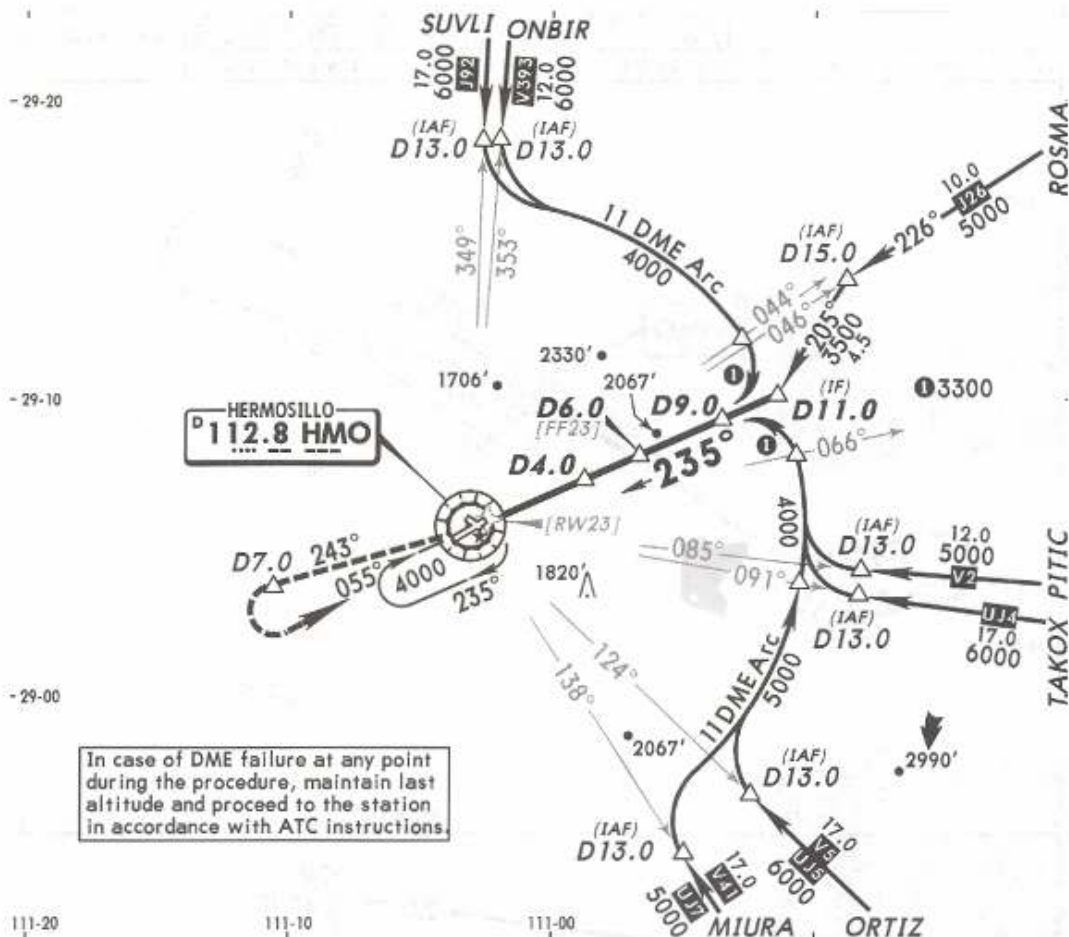
\*ATIS  
127.7

\*HERMOSILLO Approach  
121.4

\*HERMOSILLO Tower  
118.7

6 OCT 06

VOR HMO <b>112.8</b>	Final Apch Crs <b>235°</b>	Minimum Alt D6.0 <b>2700'</b> (2074')	MDA(H) <b>1080'</b> (454')	Apt Elev 627' Rwy 23 <b>626'</b>
----------------------------	----------------------------------	---	-------------------------------	-------------------------------------



**MISSED APCH:** Climb outbound on HMO VOR R-243 to D7.0, turn LEFT within 10 NM. Return to HMO VOR at the minimum holding altitude.

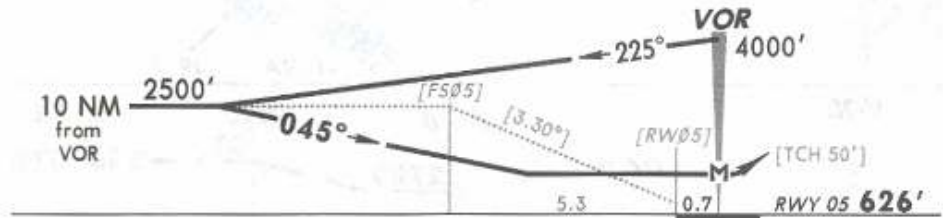
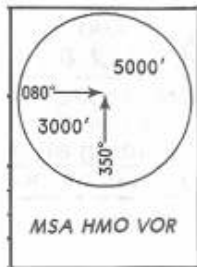
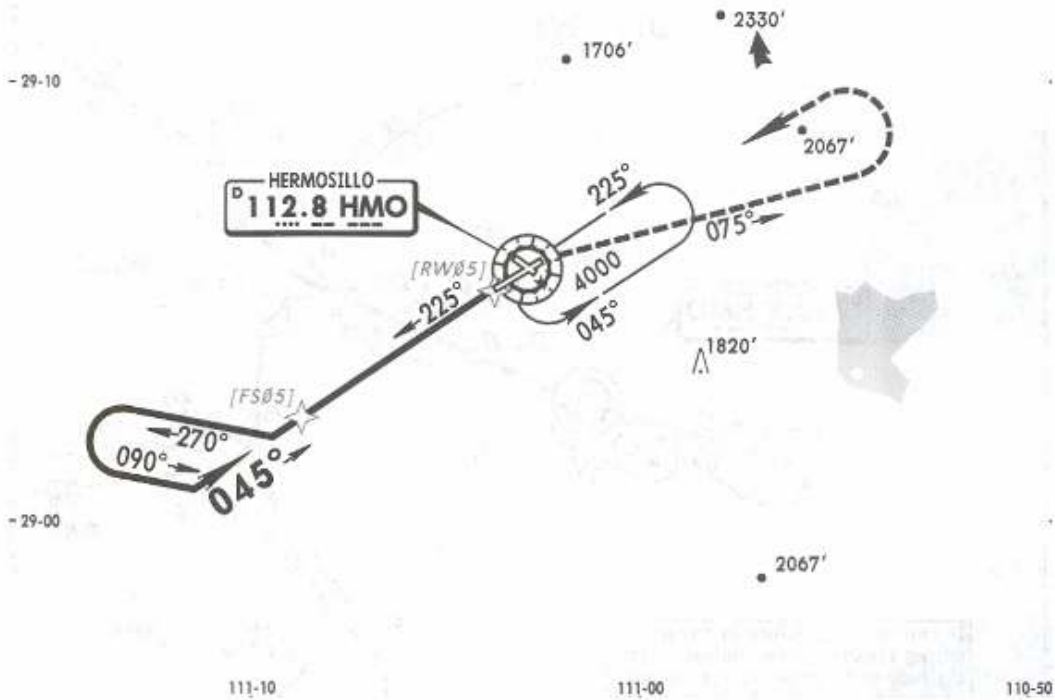
Alt Set: MB (IN on req) Rwy Elev: 23 MB Trans level: FL 195 Trans alt: 18500'

NOT TO BE USED FOR ACTUAL NAVIGATION



\*ATIS 127.7      \*HERMOSILLO Approach 121.4      \*HERMOSILLO Tower 118.7

VOR HMO <b>112.8</b>	Final Apch Crs <b>045°</b>	No FAF	MDA(H) <b>1160' (534')</b>	Apt Elev <b>627'</b> Rwy 05 <b>626'</b>
----------------------------	----------------------------------	--------	-------------------------------	--



**MISSED APCH:** Climb outbound on HMO VOR R-075 with LEFT turn within 10 NM. Return to HMO VOR at the minimum holding altitude.

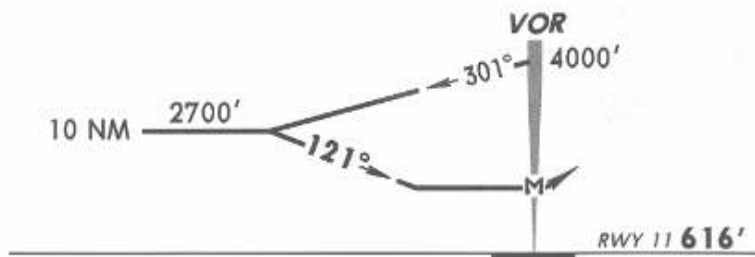
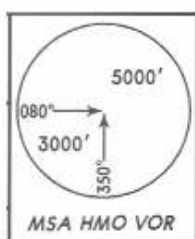
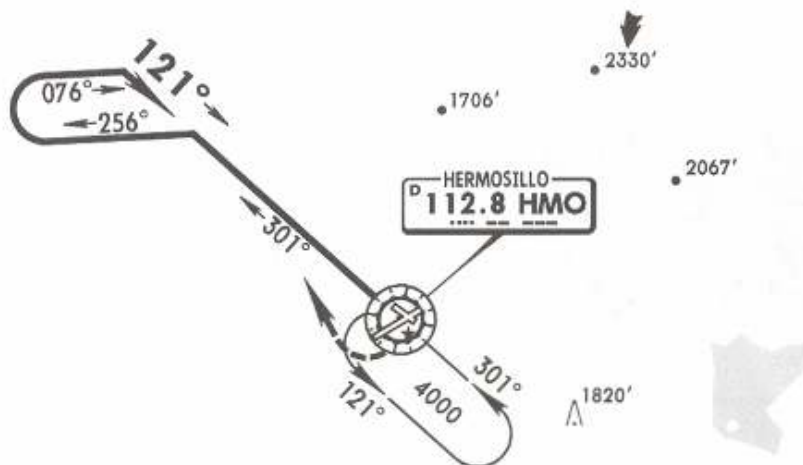
		MAX TIME TO TURN						
Gnd Speed-Kts	7 NM to turn	80	100	120	140	160	180	200
		5:15	4:12	3:30	3:00	2:38	2:20	2:06

Alt Set: MB (IN on req)    Rwy Elev: 22 MB    Trans level: FL 195    Trans alt: 18500'

\*ATIS 127.7    \*HERMOSILLO Approach 121.4    \*HERMOSILLO Tower 118.7

6 OCT 06

VOR HMO <b>112.8</b>	Final Apch Crs <b>121°</b>	No FAF	MDA(H) (CONDITIONAL) <b>1200'</b> (584')	Apt Elev 627' Rwy 11 <b>616'</b>
----------------------------	----------------------------------	--------	--	-------------------------------------



**MISSED APCH:** Climbing RIGHT turn to intercept HMO VOR R-301 outbound and proceed on the approach track to the minimum holding altitude.

Alt Set: MB (IN on req)    Rwy Elev: 22 MB    Trans level: FL 195    Trans alt: 18500'