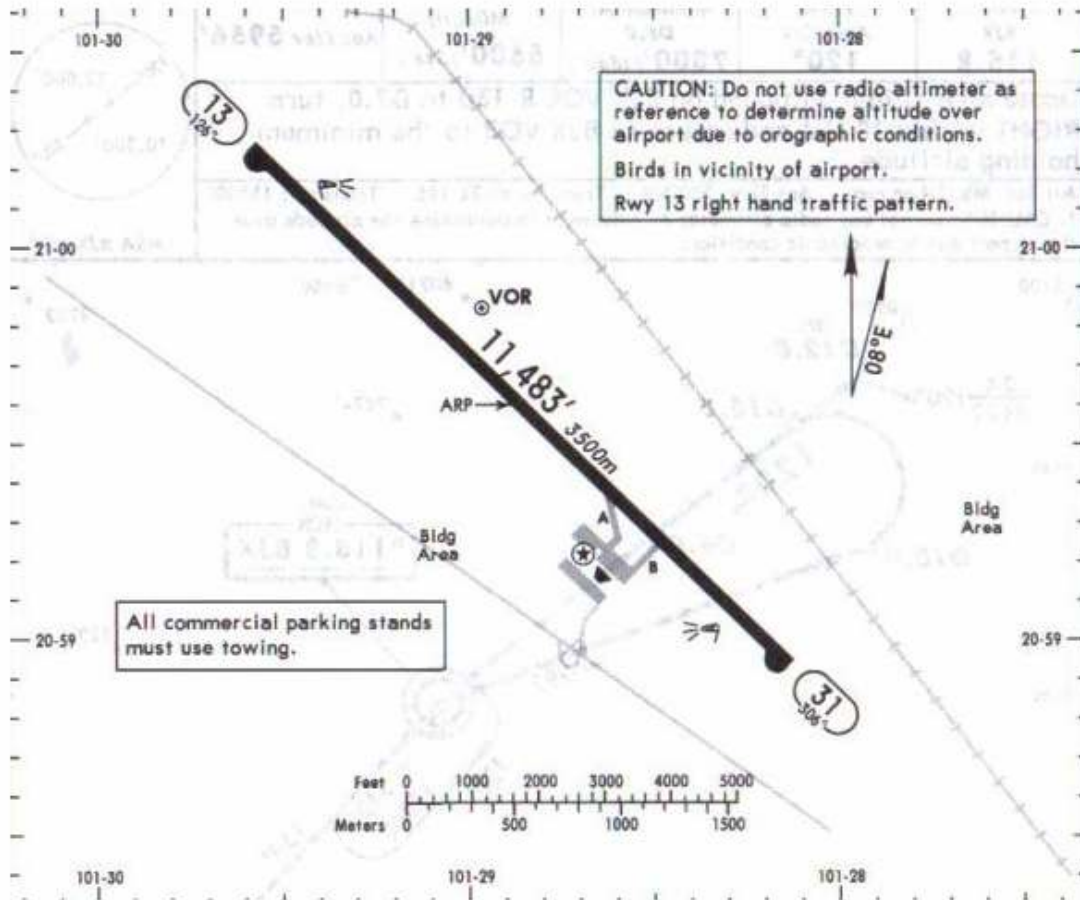


Apt Elev **5956'**
N20 59.6 W101 28.9

*ATIS
128.4

#LEON Tower
118.35

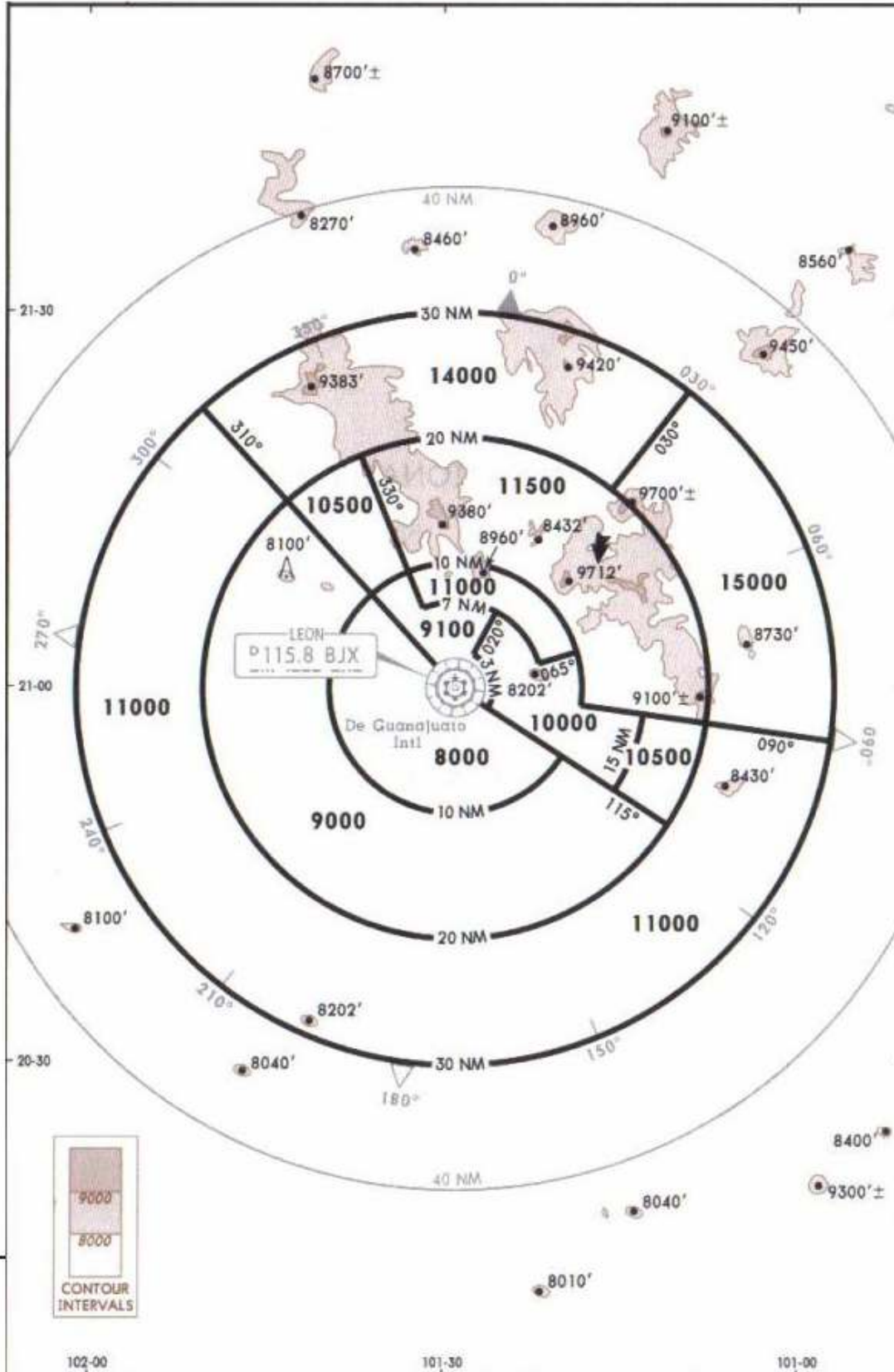
26 JAN 07



RWY	31	HIRL PAPI-L (angle 3.0°)	USABLE LENGTHS		TAKE-OFF	WIDTH
			Threshold	Glide Slope		
13						148' 45m

NOT TO BE USED FOR ACTUAL NAVIGATION

26 JAN 07



Apt Elev 5956'	Alt Set: MB (IN on Req) These are the lowest MVAs that can be assigned by the controller in a sector when RADAR control procedures (vectors) are applied, without affecting routes and procedures with lower minimums.	Trans level: FL 195	Trans alt: 18500'
---------------------------------	--	----------------------------	--------------------------

NOT TO BE USED FOR ACTUAL NAVIGATION

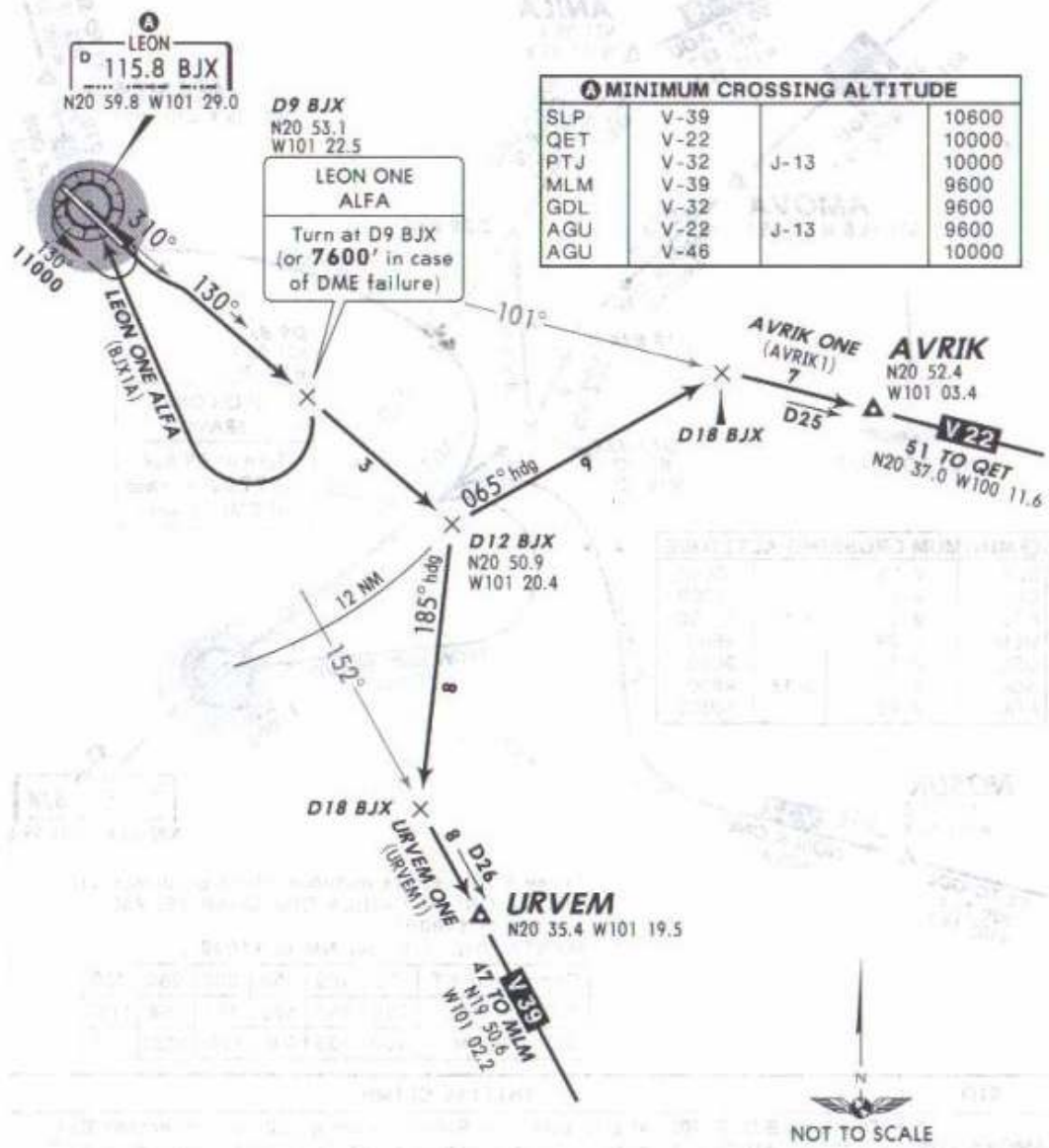
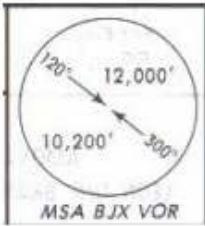
Apt Elev
5956'

Trans level: FL 195 Trans alt: 18500'

8 FEB 08

DEPARTURES RWY 13

AVRIK ONE (AVRIK1), LEON ONE ALFA (BJX1A),
URVEM ONE (URVEM1)



SID	INITIAL CLIMB
AVRIK ONE	Climb on BJJ R-130, at D12 BJJ turn LEFT heading 065° and intercept BJJ R-101 to AVRIK. Continue on the assigned route or in accordance with ATC instructions.
LEON ONE ALFA	Climb on BJJ R-130, at D9 BJJ (or 7600' in case of DME failure), turn RIGHT to BJJ within 12 NM. Depart BJJ at the MCA established for the assigned route or in accordance with ATC instructions.
URVEM ONE	Climb on BJJ R-130, at D12 BJJ turn RIGHT heading 185° and intercept BJJ R-152 to URVEM. Continue on the assigned route or in accordance with ATC instructions.

NOT TO BE USED FOR ACTUAL NAVIGATION

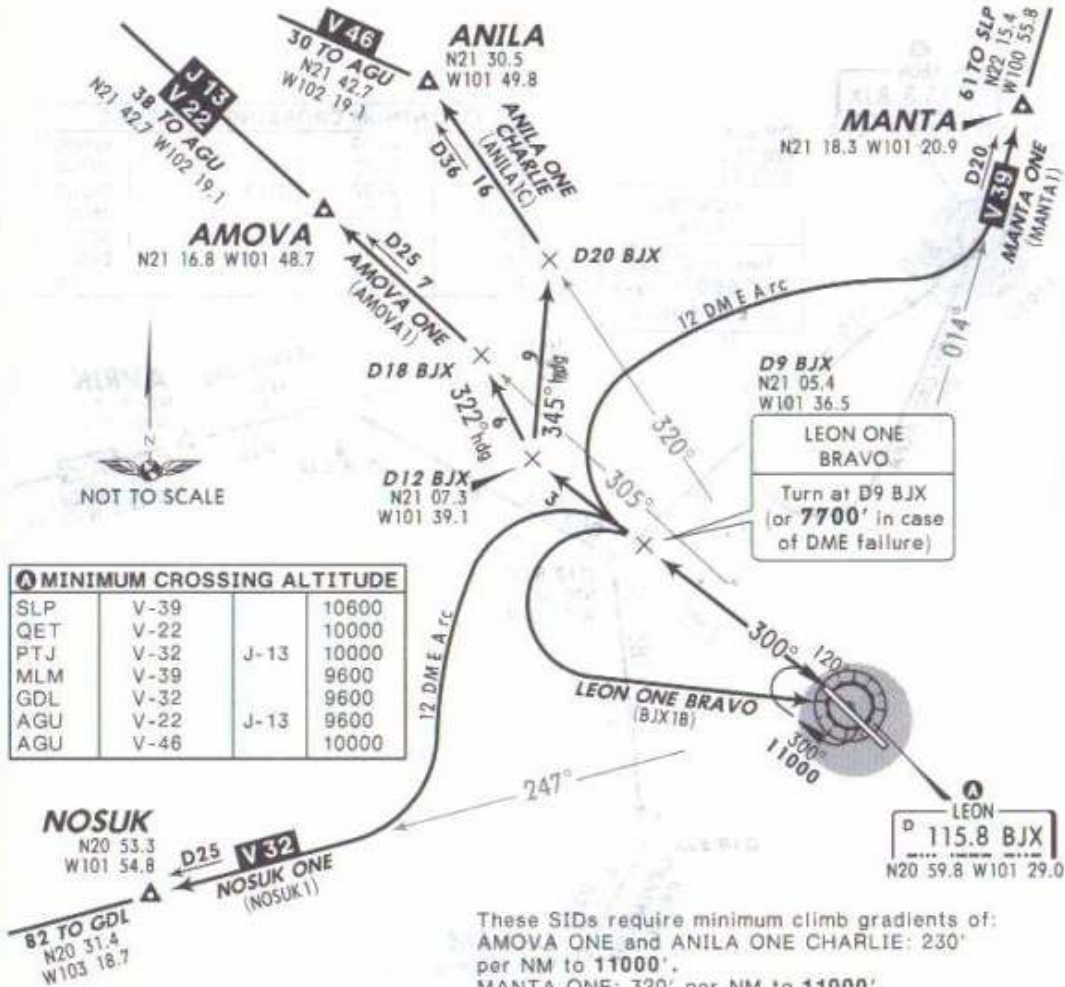
Apt Elev
5956'

Trans level: FL 195 Trans alt: 18500'

8 FEB 08

DEPARTURES RWY 31

AMOVA ONE (AMOVA1), ANILA ONE CHARLIE (ANILA1C),
LEON ONE BRAVO (BJX1B), MANTA ONE (MANTA1), NOSUK ONE (NOSUK1)



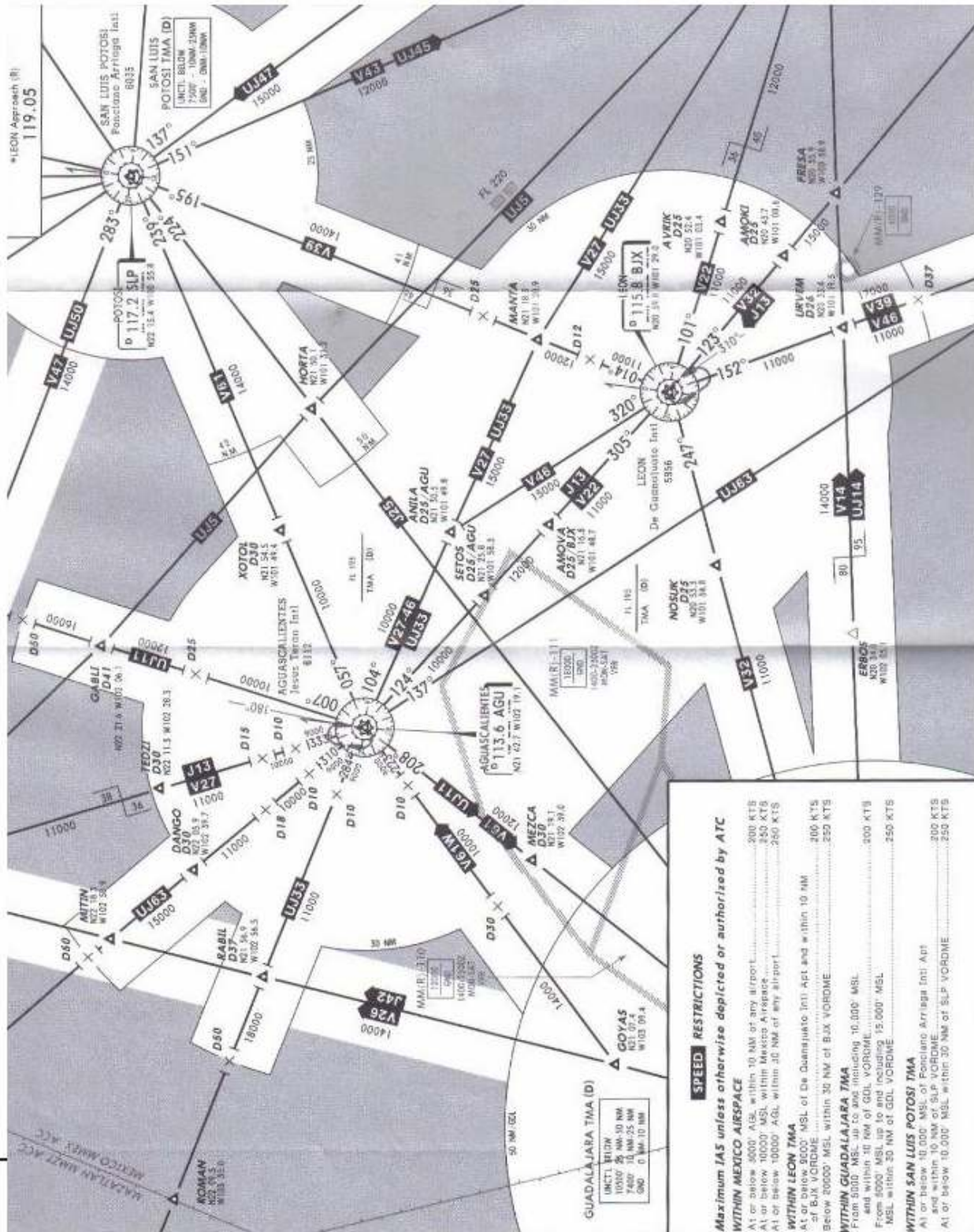
MINIMUM CROSSING ALTITUDE			
SLP	V-39		10600
QET	V-22		10000
PTJ	V-32	J-13	10000
MLM	V-39		9600
GDL	V-32	J-13	9600
AGU	V-22		9600
AGU	V-46	J-13	10000

These SIDs require minimum climb gradients of:
 AMOVA ONE and ANILA ONE CHARLIE: 230' per NM to 11000'.
 MANTA ONE: 320' per NM to 11000'.

Gnd speed-KT	75	100	150	200	250	300
230' per NM	288	383	575	767	958	1150
320' per NM	400	533	800	1067	1333	1600

SID	INITIAL CLIMB
AMOVA ONE	Climb on BJJ R-300, at D12 BJJ turn RIGHT heading 322° and intercept BJJ R-305 to AMOVA. Continue on the assigned route or in accordance with ATC instructions.
ANILA ONE CHARLIE	Climb on BJJ R-300, at D12 BJJ turn RIGHT heading 345° and intercept BJJ R-320 to ANILA. Continue on the assigned route or in accordance with ATC instructions.
LEON ONE BRAVO	Climb on BJJ R-300, at D9 BJJ (or 7700' in case of DME failure), turn LEFT to BJJ within 12 NM. Depart BJJ at the MCA established for the assigned route or in accordance with ATC instructions.
MANTA ONE	Climb on BJJ R-300, at D9 BJJ turn RIGHT onto BJJ 12 DME Arc to intercept BJJ R-014 to MANTA. Continue on the assigned route or in accordance with ATC instructions.
NOSUK ONE	Climb on BJJ R-300, at D9 BJJ turn LEFT onto BJJ 12 DME Arc to intercept BJJ R-247 to NOSUK. Continue on the assigned route or in accordance with ATC instructions.

NOT TO BE USED FOR ACTUAL NAVIGATION

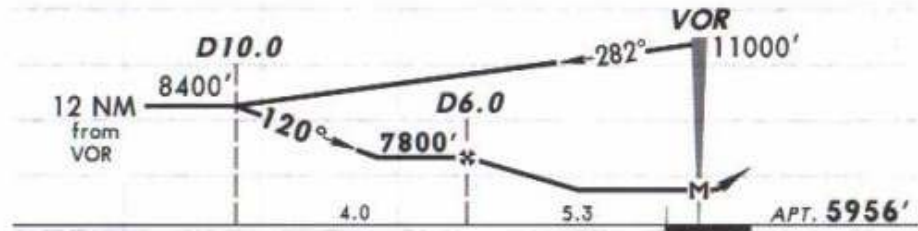
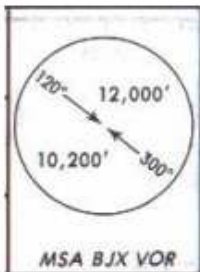
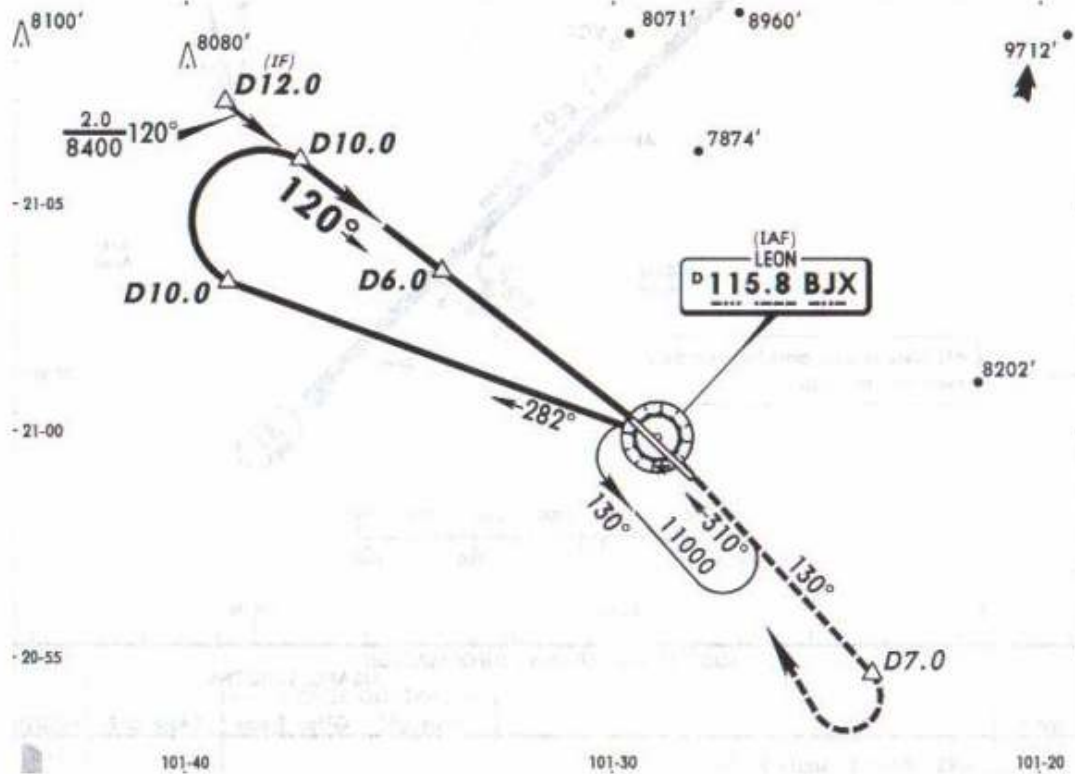


NOT TO BE USED FOR ACTUAL NAVIGATION

*ATIS 128.4 *LEON Approach (R) 119.05 *LEON Tower 118.35

26 JAN 07

VOR BJX 115.8	Final Apch Crs 120°	Minimum Alt D6.0 7800' (1844')	MDA(H) 6500' (544')	Apt Elev 5956'
----------------------------	----------------------------------	---	-------------------------------	-----------------------



MISSED APCH: Climb outbound on BJJ VOR R-130 to D7.0, turn RIGHT within 10 NM and return to BJJ VOR to the minimum holding altitude.

Alt Set: MB (IN on req) Apt Elev: 200 MB Trans level: FL 195 Trans alt: 18500'
1. CAUTION: Do not use radio altimeter as reference to determine the altitude over the airport due to orographic conditions.

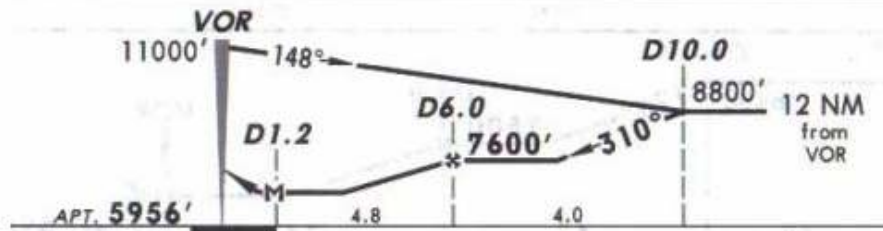
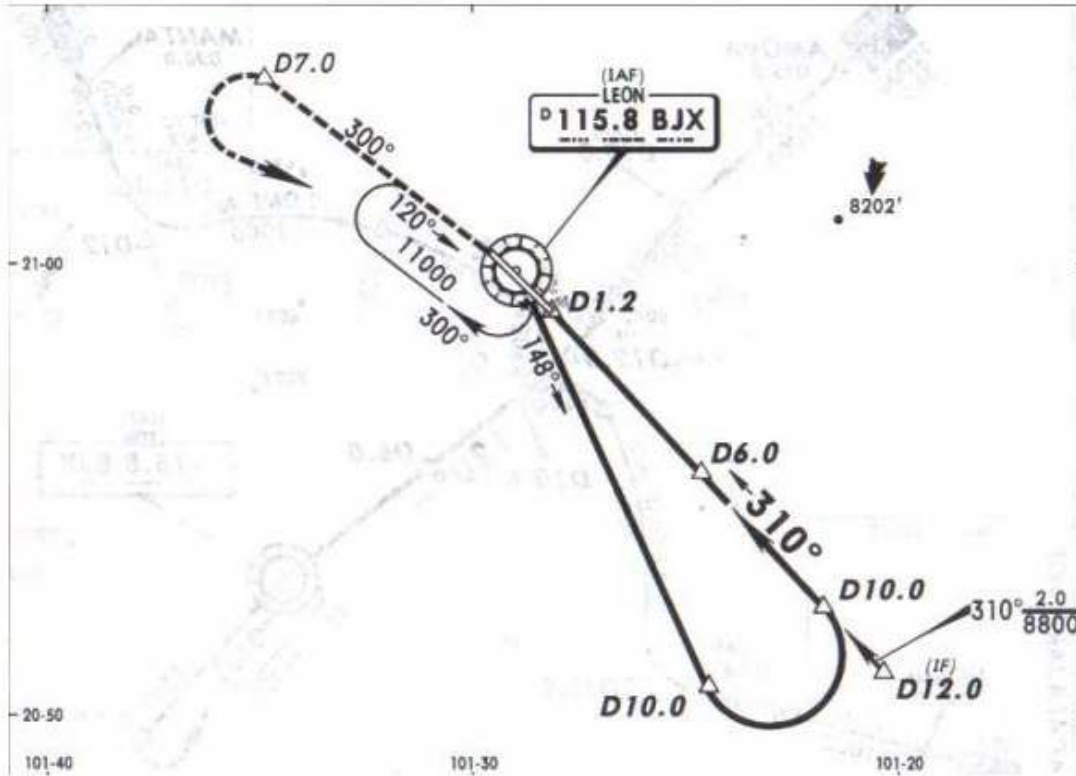
*ATIS
128.4

*LEON Approach (R)
119.05

*LEON Tower
118.35

26 JAN 07

VOR BJJ	Final Apch Crs	Minimum Alt D6.0	MDA(H)	Apt Elev
115.8	310°	7600' (1644')	6400' (444')	5956'



MISSED APCH: Climb outbound on BJJ VOR R-300 to D7.0, turn LEFT within 10 NM and return to BJJ VOR to the minimum holding altitude.

Alt Set: MB (IN on req) Apt Elev: 200 MB Trans level: FL 195 Trans alt: 18500'
 1. CAUTION: Do not use radio altimeter as reference to determine the altitude over the airport due to orographic conditions.

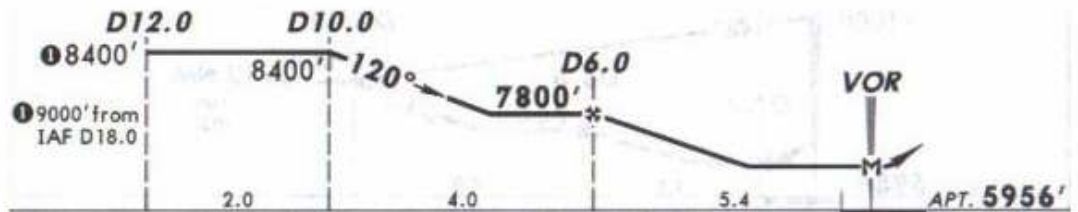
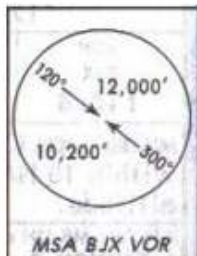
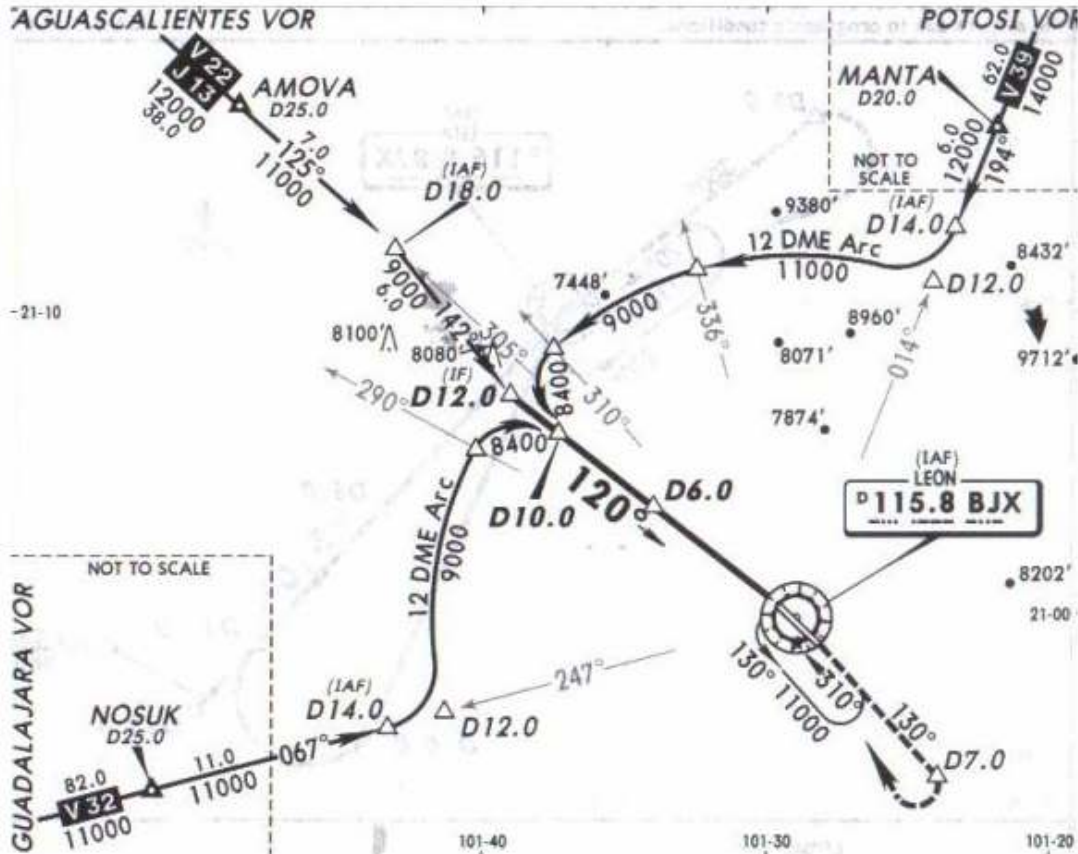
*ATIS
128.4

*LEON Approach (R)
119.05

*LEON Tower
118.35

26 JAN 07

VOR BJX 115.8	Final Apch Crs 120°	Minimum Alt D6.0 7800' (1844')	MDA(H) 6500' (544')	Apt Elev 5956'
----------------------------	----------------------------------	---	-------------------------------	-----------------------



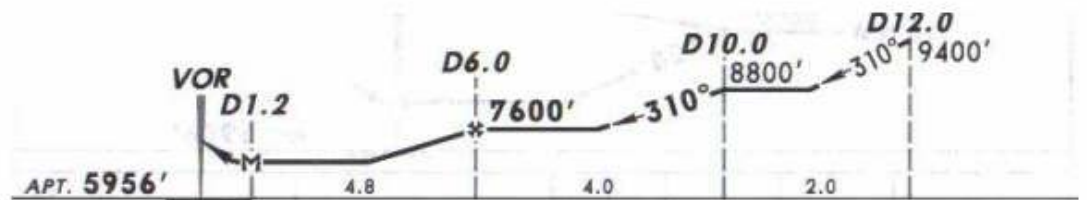
MISSED APCH: Climb on BJJX VOR R-130 to D7.0, turn RIGHT within 10 NM and return to BJJX VOR to the minimum holding altitude.

Alt Set: MB (IN on Req) Apt Elev: 200 MB Trans level: FL 195 Trans alt: 18500'

1. CAUTION: Do not use radio altimeter as reference to determine altitude over airport due to orographic conditions. 2. In case of DME failure at any point during the procedure, maintain last altitude and proceed to the station in accordance with ATC instructions.

*ATIS 128.4 *LEON Approach (R) 119.05 *LEON Tower 118.35

VOR BJX 115.8	Final Apch Crs 310°	Minimum Alt D6.0 7600' (1644')	MDA(H) 6400' (444')	Apt Elev 5956'
---------------------	---------------------------	--------------------------------------	------------------------	----------------



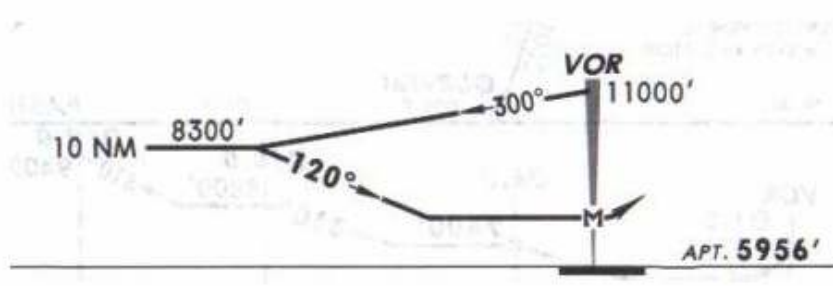
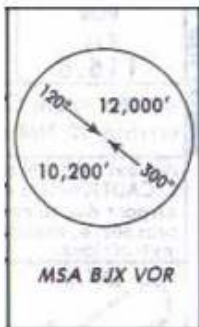
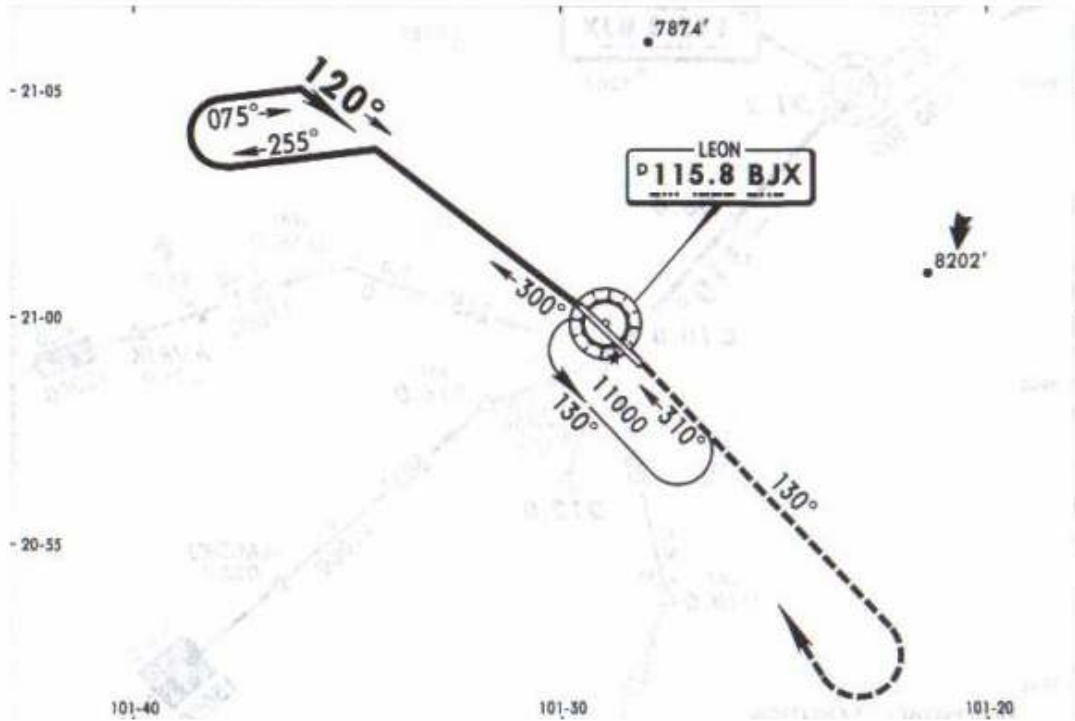
MISSED APCH: Climb outbound on BJJ VOR R-300 to D7.0, turn LEFT within 10 NM and return to BJJ VOR to the minimum holding altitude.

Alt Set: MB (IN on Req) Apt Elev: 200 MB Trans level: FL 195 Trans alt: 18500'
1. CAUTION: Do not use radio altimeter as reference to determine altitude over airport due to orographic conditions. 2. In case of DME failure at any point during the procedure, maintain last altitude and proceed to the station in accordance with ATC instructions.

*ATIS 128.4 *LEON Approach (R) 119.05 *LEON Tower 118.35

26 JAN 07

VOR BJJ 115.8	Final Apch Crs 120°	No FAF	MDA(H) 7160' (1204')	Apt Elev 5956'
-------------------------	-------------------------------	--------	--------------------------------	-----------------------



MISSED APCH: Climb outbound on BJJ VOR R-130, turn RIGHT within 10 NM and return to BJJ VOR to the minimum holding altitude.

MAX TIME TO TURN							
Gnd Speed-Kts	80	100	120	140	160	180	200
7 NM to turn	5:15	4:12	3:30	3:00	2:38	2:20	2:06

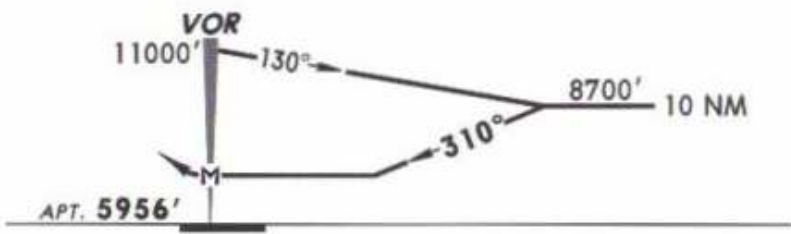
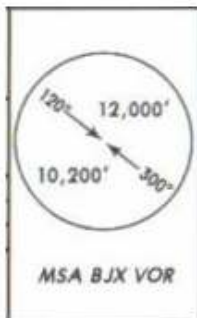
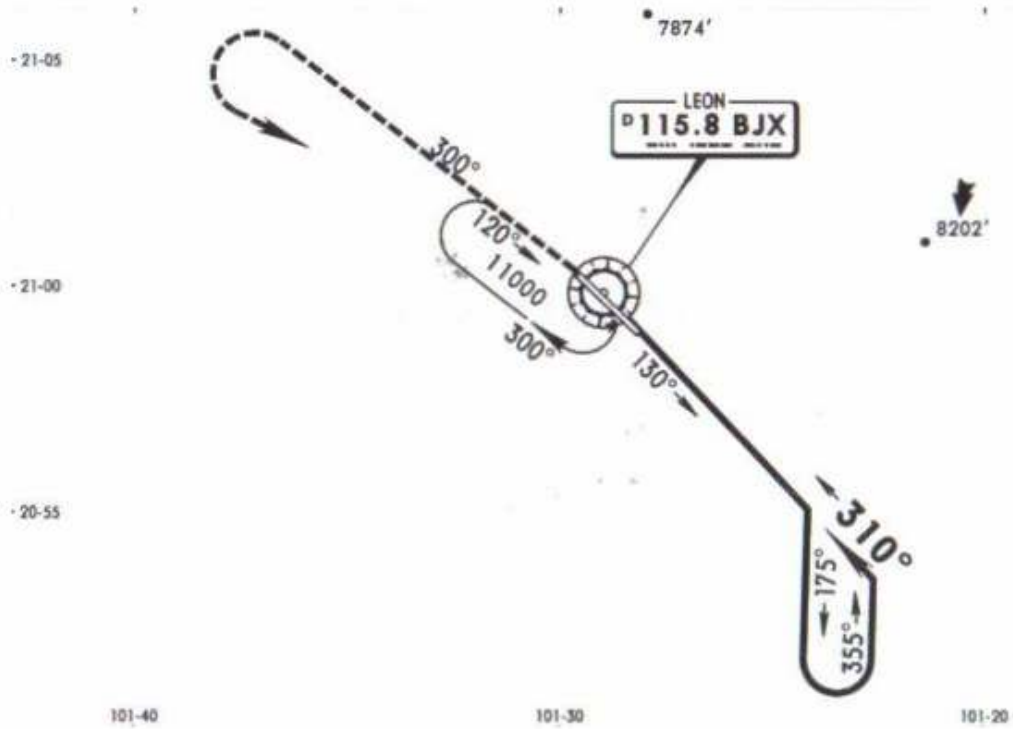
Alt Set: MB (IN on req) Apt Elev: 200 MB Trans level: FL 195 Trans alt: 18500'
 1. CAUTION: Do not use radio altimeter as reference to determine the altitude over the airport due to orographic conditions.

*ATIS
128.4

*LEON Approach (R)
119.05

*LEON Tower
118.35

VOR BJX 115.8	Final Apch Crs 310°	No FAF	MDA(H) 6960' (1004')	Apt Elev 5956'
----------------------------	----------------------------------	--------	--------------------------------	-----------------------



MISSED APCH: Climb outbound on BJJ VOR R-300, turn LEFT within 10 NM and return to BJJ VOR to the minimum holding altitude.

MAX TIME TO TURN							
Gnd speed-Kts	80	100	120	140	160	180	200
7 NM to turn	5:15	4:12	3:30	3:00	2:38	2:20	2:06

Alt Set: MB (IN on req) Apt Elev: 200 MB Trans level: FL 195 Trans alt: 18500'
1. CAUTION: Do not use radio altimeter as reference to determine the altitude over the airport due to orographic conditions.