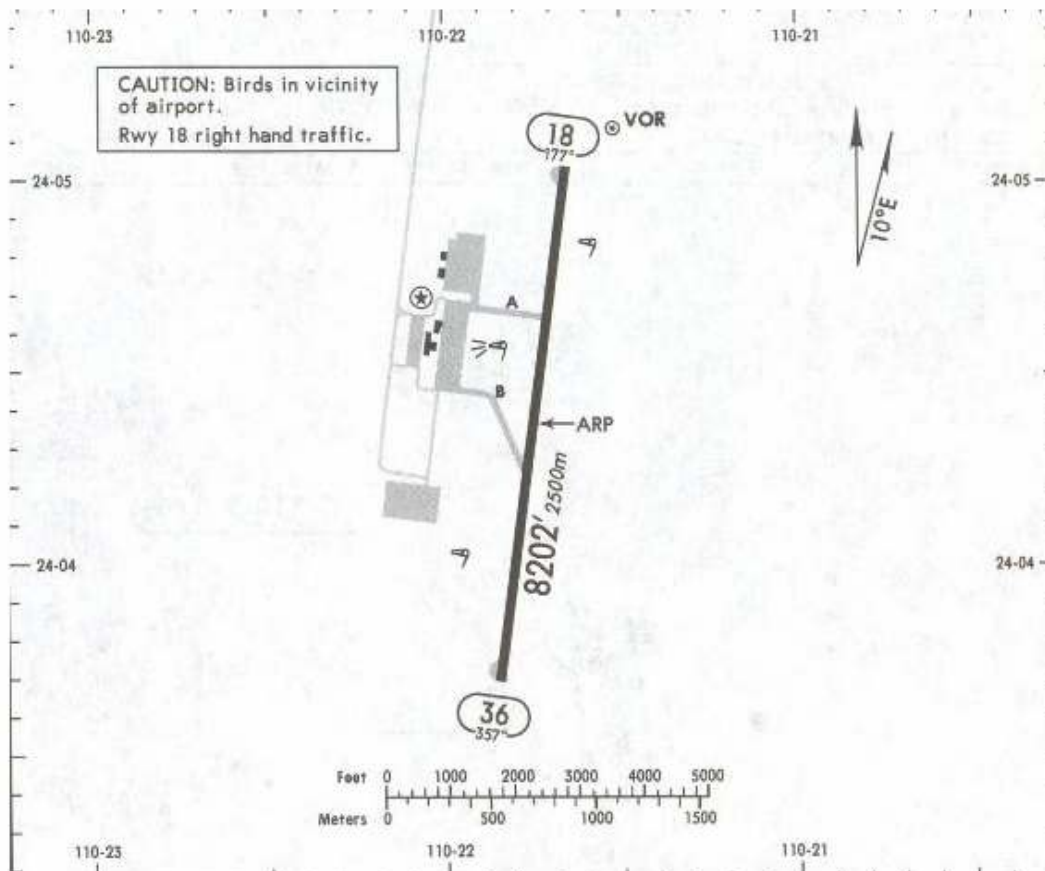


Apt Elev **69'**  
N24 04.4 W110 21.8

\*ATIS  
**127.9**

\*LA PAZ Tower  
**118.1**



RWY	ADDITIONAL RUNWAY INFORMATION		USABLE LENGTHS		TAKE-OFF	WIDTH
	36	HIRL PAPI-L (angle 3.0°)	Threshold	Glide Slope		
18			36	HIRL PAPI-L (angle 3.0°)		

	TAKE-OFF	FOR FILING AS ALTERNATE	
		Precision	Non-Precision
All Rwys			
1 & 2 Eng	600-2	600-2	1000-3
3 & 4 Eng	300-1		

NOT TO BE USED FOR ACTUAL NAVIGATION

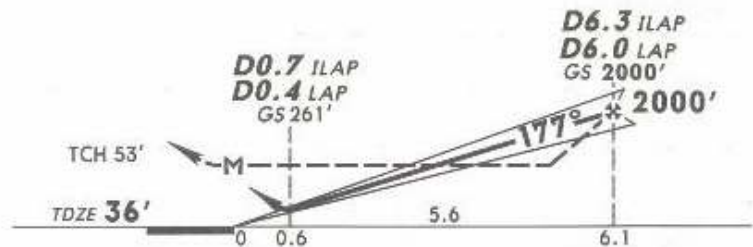
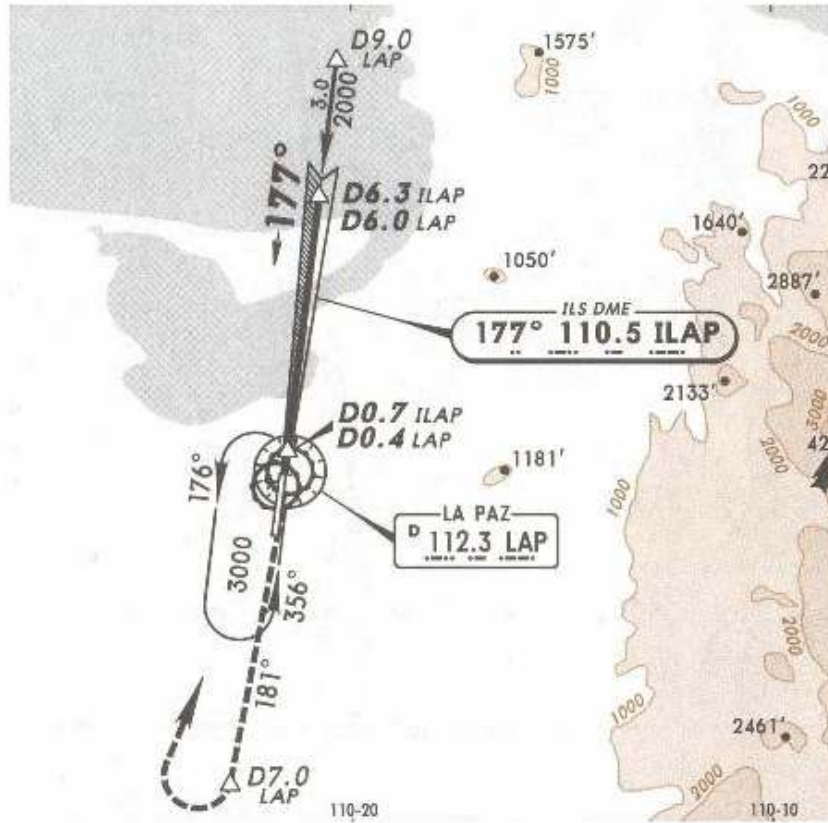
\*ATIS  
127.9

\*LA PAZ Tower  
118.1

\*LA PAZ Approach  
120.6

9 FEB 07

LOC ILAP <b>110.5</b>	Final Apch Crs <b>177°</b>	GS D6.3 ILAP D6.0 LAP <b>2000'</b> (1964')	ILS DA(H) (CONDITIONAL) <b>261'</b> (225')	Apt Elev 69' TDZE <b>36'</b>
-----------------------------	----------------------------------	---	---	---------------------------------



**MISSED APCH:** Climb outbound on LAP VOR R-181 to D7.0 LAP, make a RIGHT teardrop turn to LAP VOR within 10 NM to the minimum holding altitude.  
Alt Set: MB (IN on req) TDZ Elev: 1 MB Trans level: FL 195 Trans alt: 18500'

Apt Elev  
69'

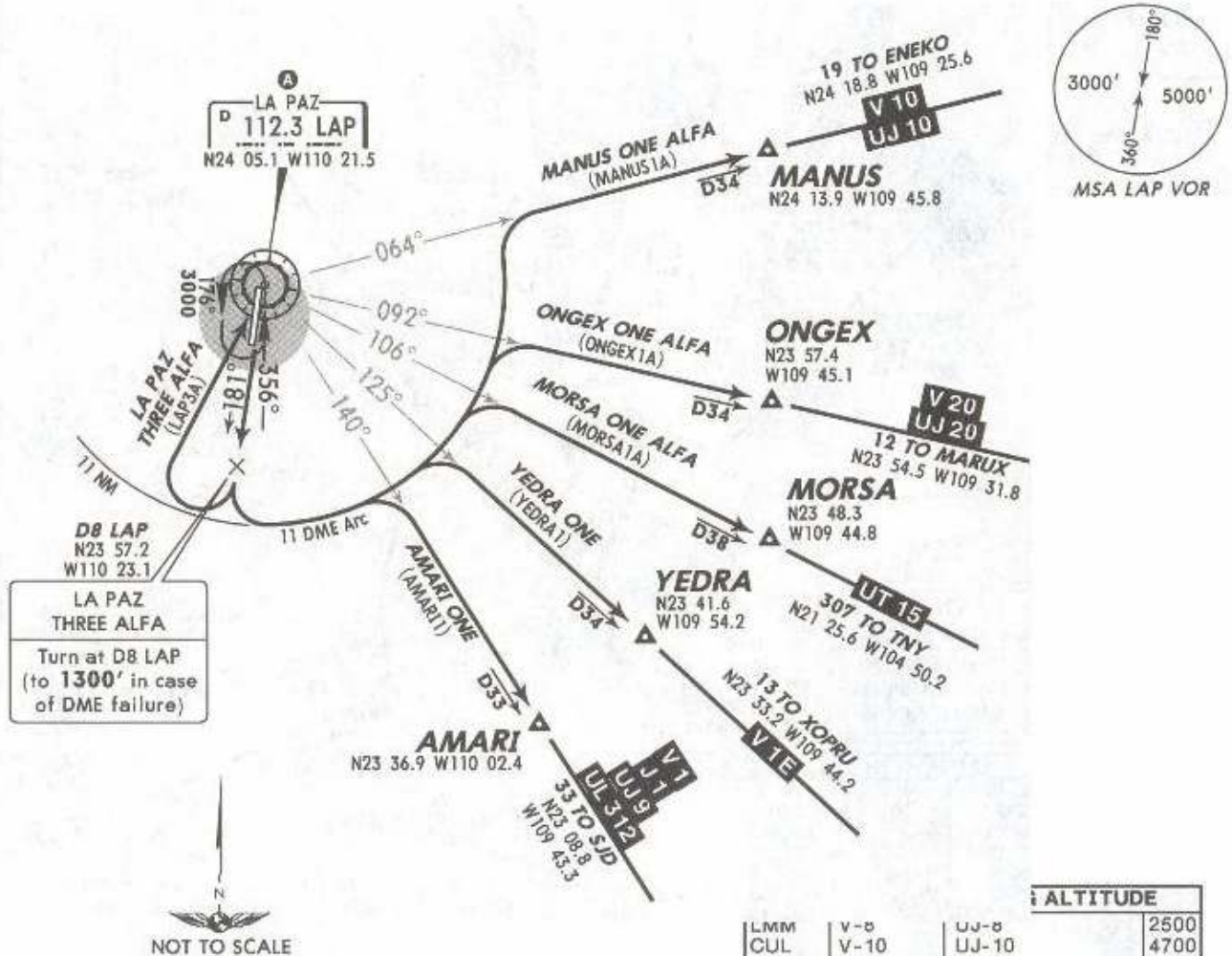
Trans level: FL195 Trans alt: 18500'

10 MAR 06

EFF 16 Mar

**DEPARTURES RWY 18**

AMARI ONE (AMARI1), LA PAZ THREE ALFA (LAP3A),  
MANUS ONE ALFA (MANUS1A), MORSA ONE ALFA (MORSA1A),  
ONGEX ONE ALFA (ONGEX1A), YEDRA ONE (YEDRA1)



NOT TO SCALE

These SIDs require minimum climb gradients:  
AMARI ONE, MANUS ONE ALFA, MORSA ONE  
ALFA, ONGEX ONE ALFA and YEDRA ONE:  
260' per NM to 6000'.

Gnd speed-KT	75	100	150	200	250	300
260' per NM	325	433	650	867	1083	1300

**ALTITUDE**

LMM	V-8	UJ-8	2500
CUL	V-10	UJ-10	4700
MZT	V-20	UJ-20	4800
TNY		UT-15	5000
SJD	V-1-E	J-1, UJ-9, UL-312	3700
SJD	V-1	UL-312	3700
GODOY		UL-312	4000
LTO	V-1-W	UJ-20	4000
LTO	V-1	J-1, UJ-9	2000
LTO	V-1-E	UJ-1-E	2000
GYM		J-92	2000
CEN	V-9		2000

SID	INITIAL CLIMB
AMARI ONE MANUS ONE ALFA MORSA ONE ALFA ONGEX ONE ALFA YEDRA ONE	Climb on LAP R-181 until D8 LAP, then turn LEFT and proceed on LAP 11 DME Arc to intercept the corresponding radial from LAP to AMARI, MANUS, MORSA, ONGEX or YEDRA. Then continue on the assigned route or in accordance with ATC instructions.
LA PAZ THREE ALFA	Climb on LAP R-181 until D8 LAP (to 1300' in case of DME failure). Turn RIGHT within 11 NM to LAP. Depart LAP at the MCA of the assigned route or in accordance with ATC instructions.

NOT TO BE USED FOR ACTUAL NAVIGATION



Apt Elev  
 69'

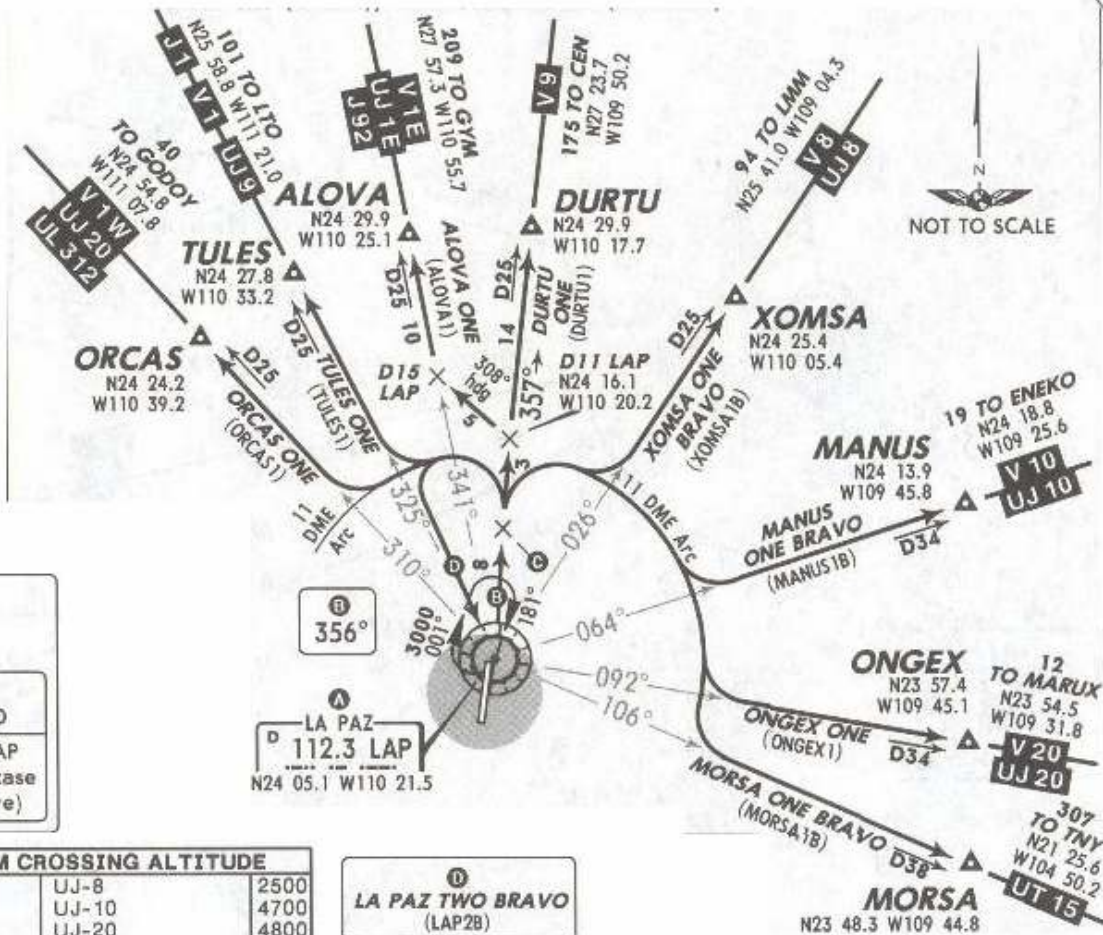
Trans level: FL195 Trans alt: 18500'

10 MAR 06

Eff 16 Mar

**DEPARTURES RWY 36**

ALOVA ONE (ALOVA1), DURTU ONE (DURTU1), LA PAZ TWO BRAVO (LAP2B),  
 MANUS ONE BRAVO (MANUS1B), MORSA ONE BRAVO (MORSA1B),  
 ONGEX ONE (ONGEX1), ORCAS ONE (ORCAS1),  
 TULES ONE (TULES1), XOMSA ONE BRAVO (XOMSA1B)



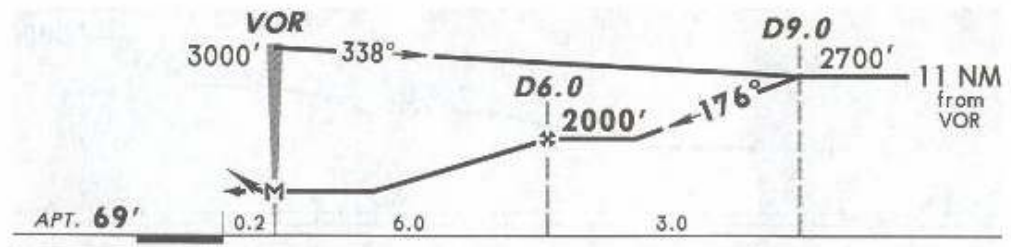
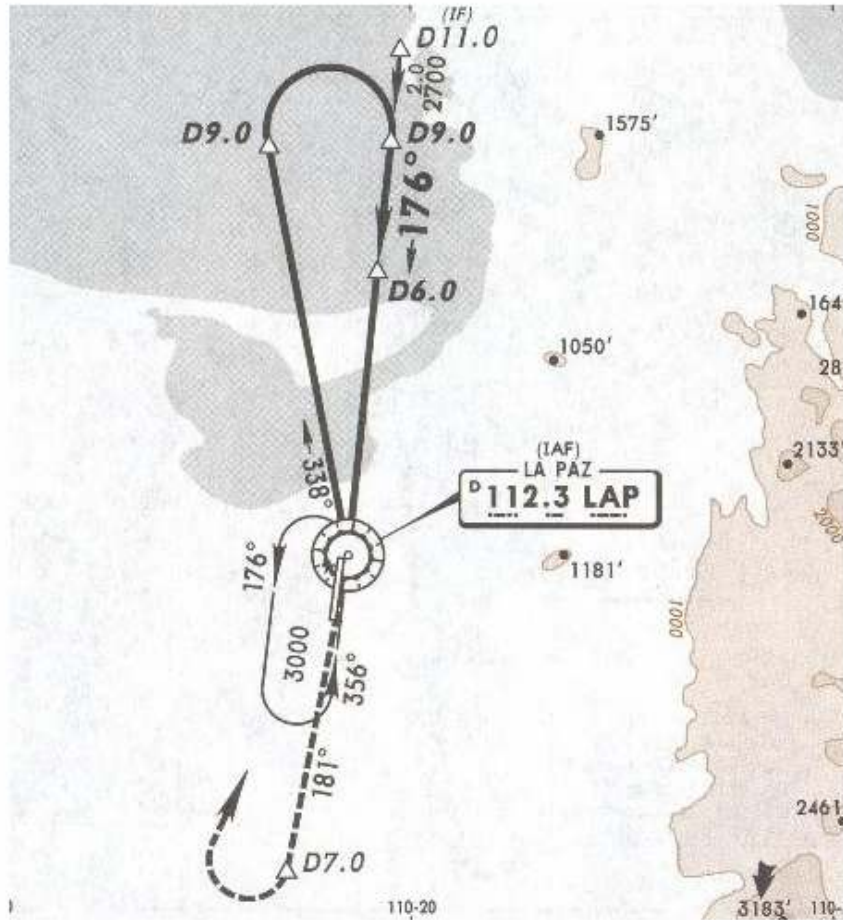
\*ATIS  
127.9

\*LA PAZ Approach  
120.6

\*LA PAZ Tower  
118.1

9 FEB 07

VOR LAP	Final Apch Crs	Minimum Alt D6.0	MDA(H)	Apt Elev
112.3	176°	2000' (1931')	540' (471')	69'



**MISSED APCH:** Climb outbound on LAP VOR R-181 to D7.0, make a RIGHT teardrop turn within 10 NM to LAP VOR to the minimum holding altitude.

Alt Set: MB (IN on req)    Apt Elev: 3 MB    Trans level: FL 195    Trans alt: 18500'

NOT TO BE USED FOR ACTUAL NAVIGATION



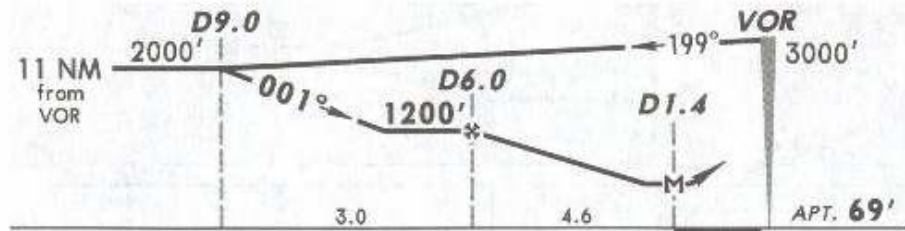
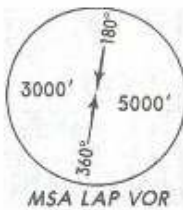
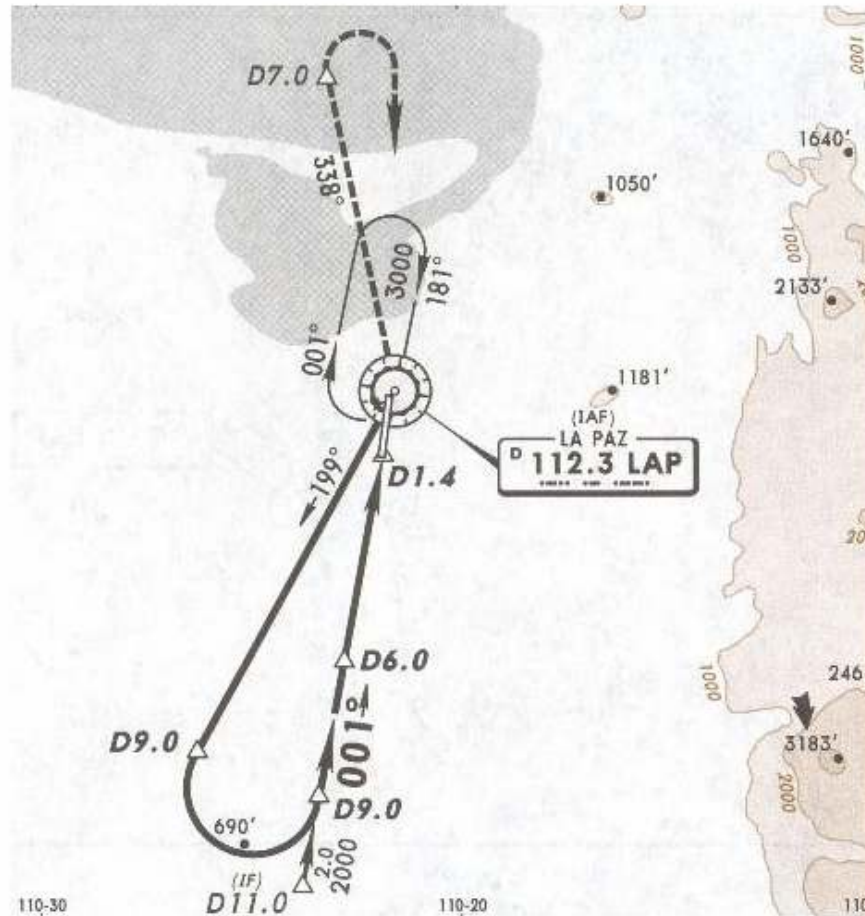
\*ATIS  
 127.9

\*LA PAZ Approach  
 120.6

\*LA PAZ Tower  
 118.1

9 FEB 07

VOR LAP <b>112.3</b>	Final Apch Crs <b>001°</b>	Minimum Alt D6.0 <b>1200'</b> (1131')	MDA(H) <b>580'</b> (511')	Apt Elev <b>69'</b>
----------------------------	----------------------------------	---	------------------------------	---------------------



**MISSED APCH:** Climb outbound on LAP VOR R-338 to D7.0, make a RIGHT teardrop turn within 10 NM to LAP VOR to the minimum holding altitude.

Alt Set: MB (IN on req) Apt Elev: 3 MB Trans level: FL 195 Trans alt: 18500'

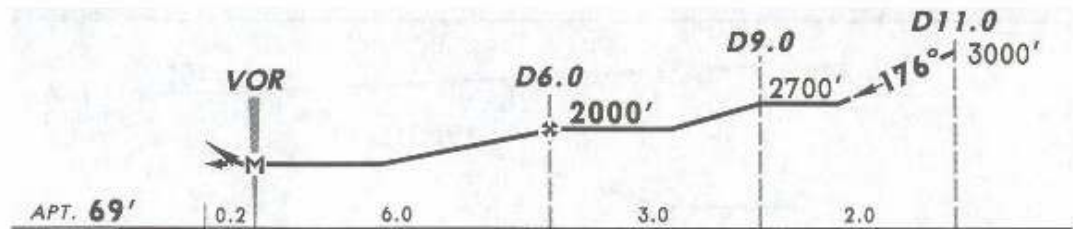
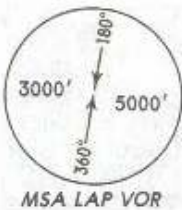
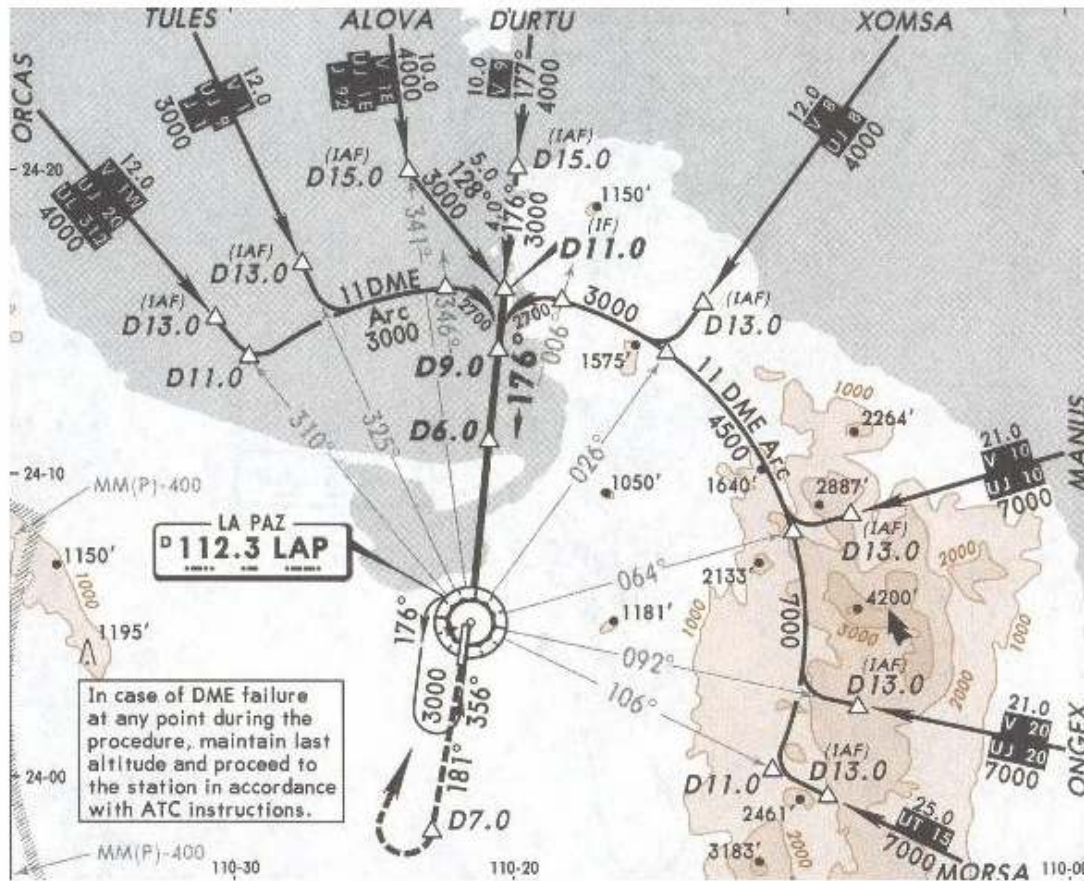
\*ATIS  
127.9

\*LA PAZ Approach  
120.6

\*LA PAZ Tower  
118.1

9 FEB 07

VOR LAP <b>112.3</b>	Final Apch Crs <b>176°</b>	Minimum Alt D6.0 <b>2000'</b> (1931')	MDA(H) <b>540'</b> (471')	Apt Elev <b>69'</b>
----------------------------	----------------------------------	---	------------------------------	---------------------



**MISSED APCH:** Climb outbound on LAP VOR R-181 to D7.0, make a RIGHT teardrop turn within 10 NM to LAP VOR to the minimum holding altitude.

Alt Set: MB (IN on req) Apt Elev: 3 MB Trans level: FL 195 Trans alt: 18500'

NOT TO BE USED FOR ACTUAL NAVIGATION



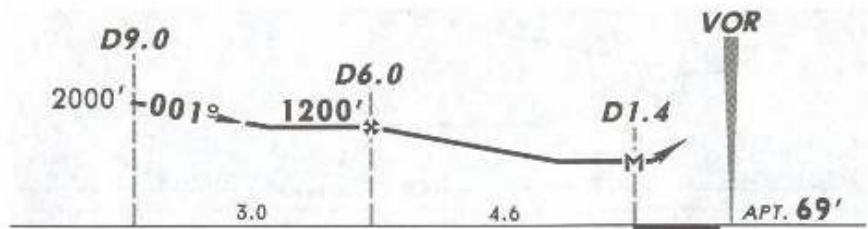
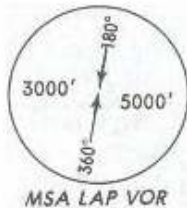
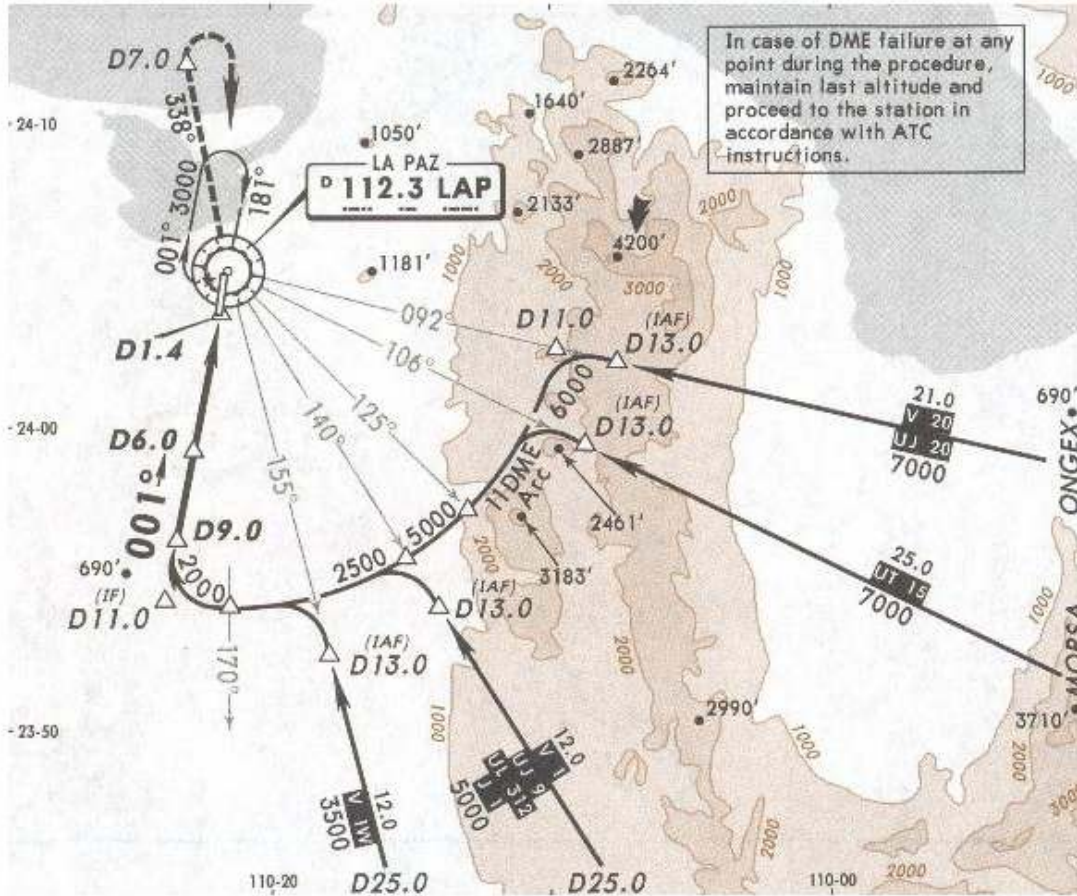
\*ATIS  
127.9

\*LA PAZ Approach  
120.6

\*LA PAZ Tower  
118.1

9 FEB 07

VOR LAP <b>112.3</b>	Final Apch Crs <b>001°</b>	Minimum Alt D6.0 <b>1200'</b> (1131')	MDA(H) <b>580'</b> (511')	Apt Elev <b>69'</b>
----------------------------	----------------------------------	---	------------------------------	---------------------



**MISSED APCH:** Climb outbound on LAP VOR R-338 to D7.0, make a RIGHT teardrop turn within 10 NM to LAP VOR to the minimum holding altitude.

Alt Set: MB (IN on req)    Apt Elev: 3 MB    Trans level: FL 195    Trans alt: 18500'

NOT TO BE USED FOR ACTUAL NAVIGATION



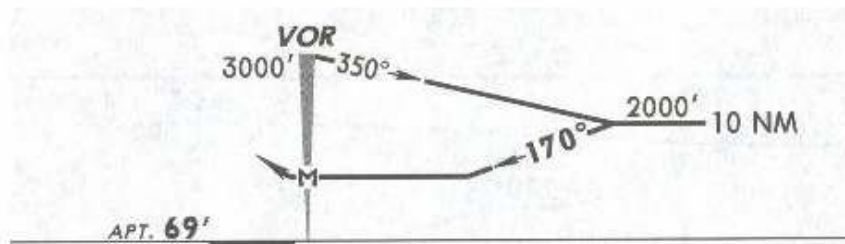
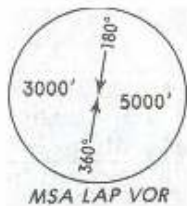
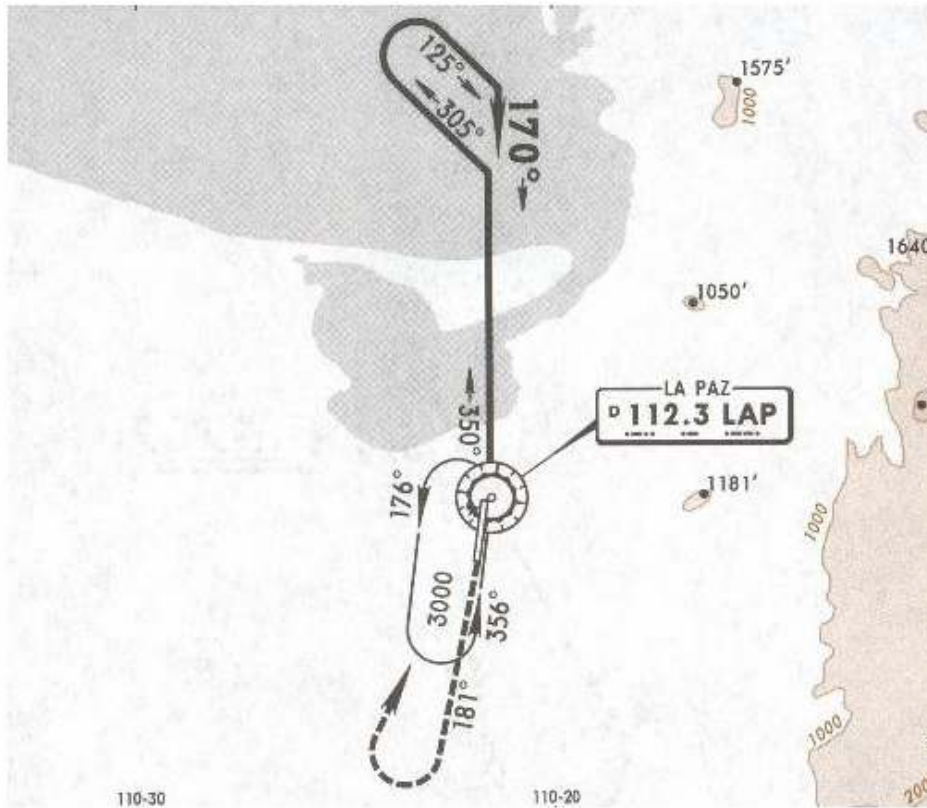
\*ATIS  
127.9

\*LA PAZ Approach  
120.6

\*LA PAZ Tower  
118.1

9 FEB 07

VOR LAP <b>112.3</b>	Final Apch Crs <b>170°</b>	No FAF	MDA(H) <b>680'</b> (611')	Apt Elev <b>69'</b>
----------------------------	----------------------------------	--------	------------------------------	---------------------



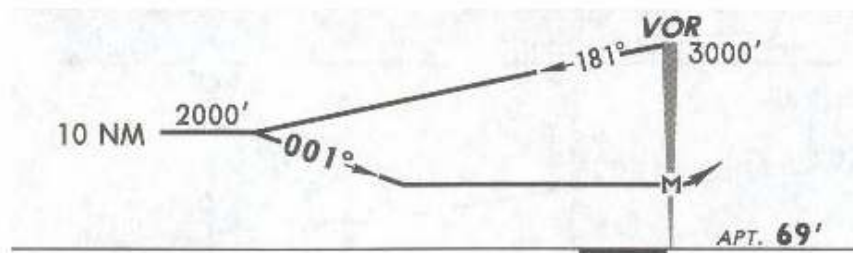
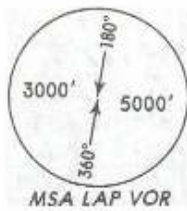
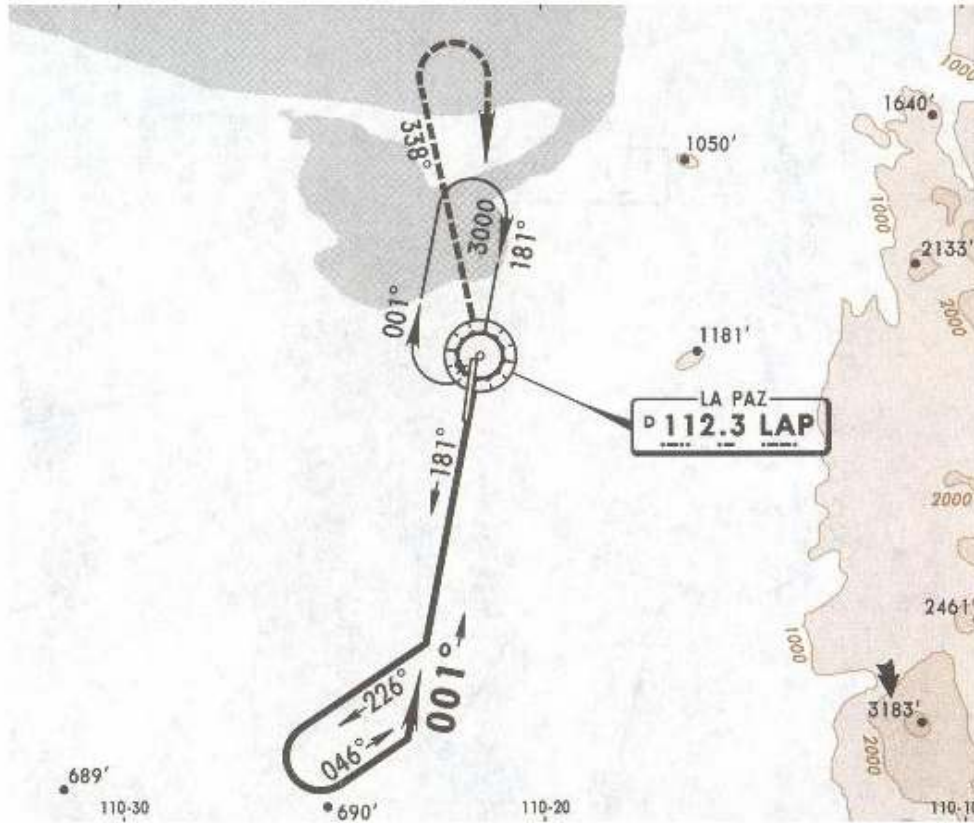
**MISSED APCH:** Climb outbound on LAP VOR R-181, make a RIGHT teardrop turn to LAP VOR within 10 NM to the minimum holding altitude.

Alt Set: MB (IN on req) Apt Elev: 3 MB Trans level: FL 195 Trans alt: 18500'

\*ATIS 127.9      \*LA PAZ Approach 120.6      \*LA PAZ Tower 118.1

9 FEB 07

VOR LAP <b>112.3</b>	Final Apch Crs <b>001°</b>	No FAF	MDA(H) <b>900'</b> (831')	Apt Elev <b>69'</b>
----------------------------	----------------------------------	--------	------------------------------	---------------------



**MISSED APCH:** Climb outbound on LAP VOR R-338, make a RIGHT turn to LAP VOR within 10 NM to the minimum holding altitude.

Alt Set: MB (IN on req)    Apt Elev: 3 MB    Trans level: FL 195    Trans alt: 18500'