

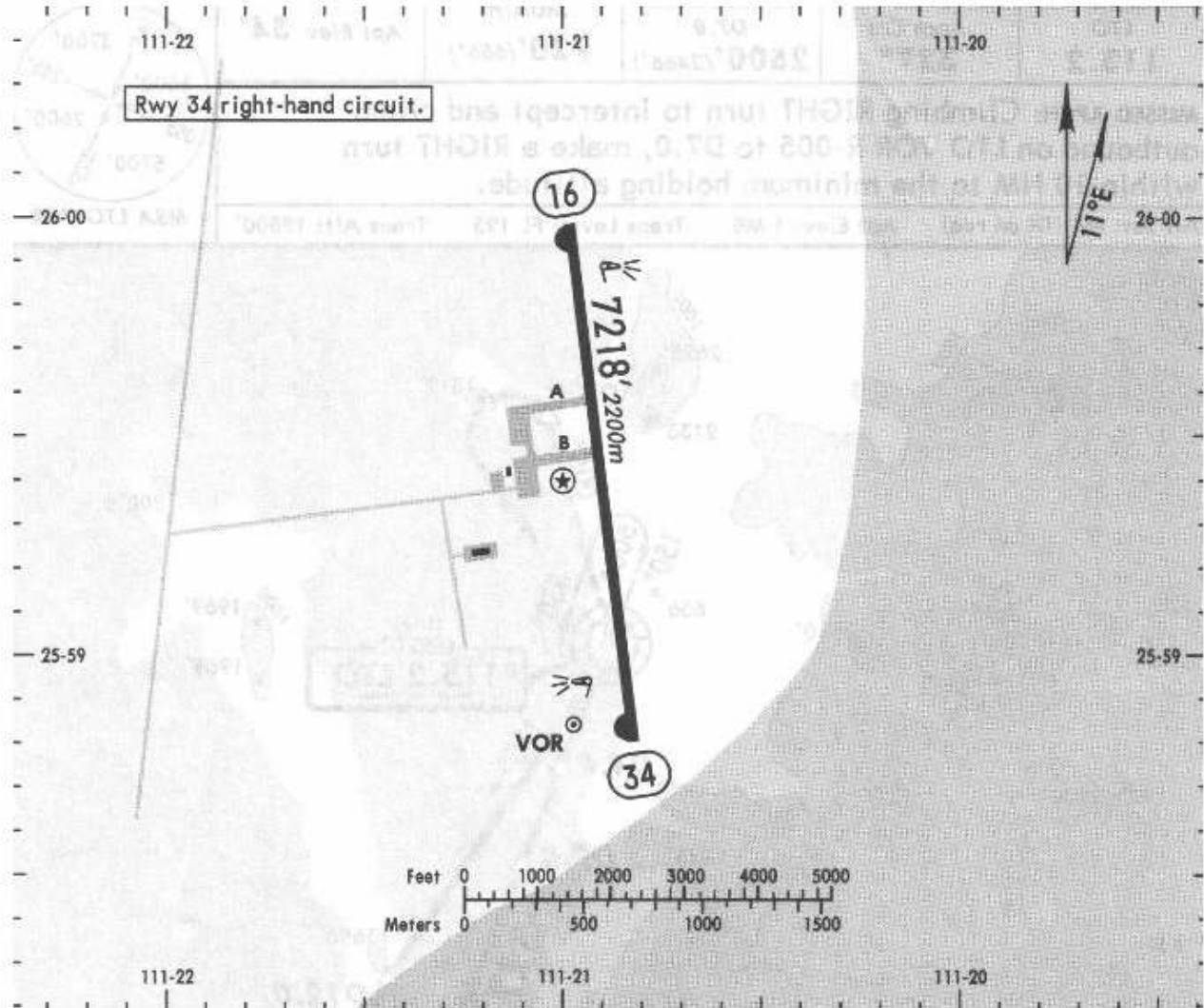
26 SEP 03

Apt Elev **34'**
LTO 113.2-On Airport

*LORETO Tower
118.4

UNICOM
122.8

N25 59.4 W111 20.8



| RWY | ADDITIONAL RUNWAY INFORMATION | USABLE LENGTHS | | | WIDTH |
|-----|-----------------------------------|--------------------------|-------------|----------|-------------|
| | | LANDING BEYOND Threshold | Glide Slope | TAKE-OFF | |
| 16 | HIRL 1 PAPI-L (angle 3.0°) | | | | 148' 45m |
| 34 | HIRL PAPI-L (angle 3.0°) | | | | |

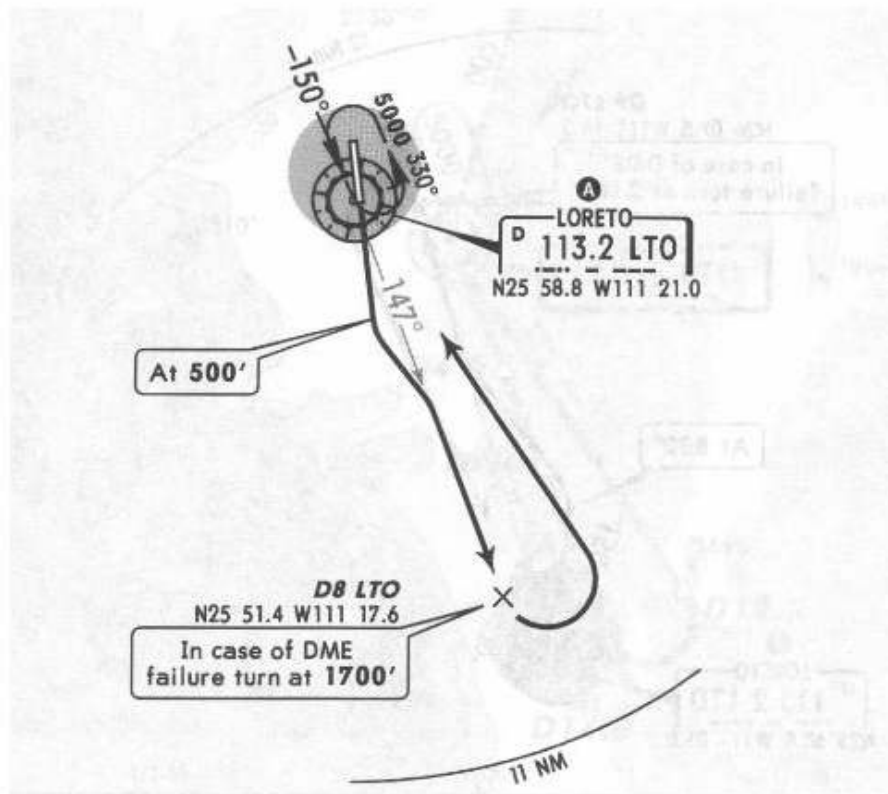
NOT TO BE USED FOR ACTUAL NAVIGATION

22 OCT 04

Apt Elev
34'

Trans level: FL 195 Trans alt: 18500'

DEPARTURE RWY 16
LORETO TWO ALFA (LTO2A)



NOT TO SCALE

| A MINIMUM CROSSING ALTITUDE | | | |
|-----------------------------|-------|----------|------|
| CEN | V-42 | UJ-2 | 3700 |
| LAP | V-1E | UJ-1E | 6600 |
| LAP | V-1 | UJ-9,J-1 | 5700 |
| LAP | V-1W | UJ-20 | 5900 |
| GRN | V-42 | UJ-20 | 6100 |
| SRL | V-1-4 | UJ-9,J-1 | 6100 |
| SJD | V-4 | | 6600 |
| GYM | V-50 | | 3100 |

ROUTING

Climb on runway heading until reaching 500', then turn LEFT and proceed on LTO R-147 to D8 LTO (to 1700' in case of DME failure). Turn LEFT within 11 NM to LTO, crossing at the MCA A for the assigned route or in accordance with ATC instructions.

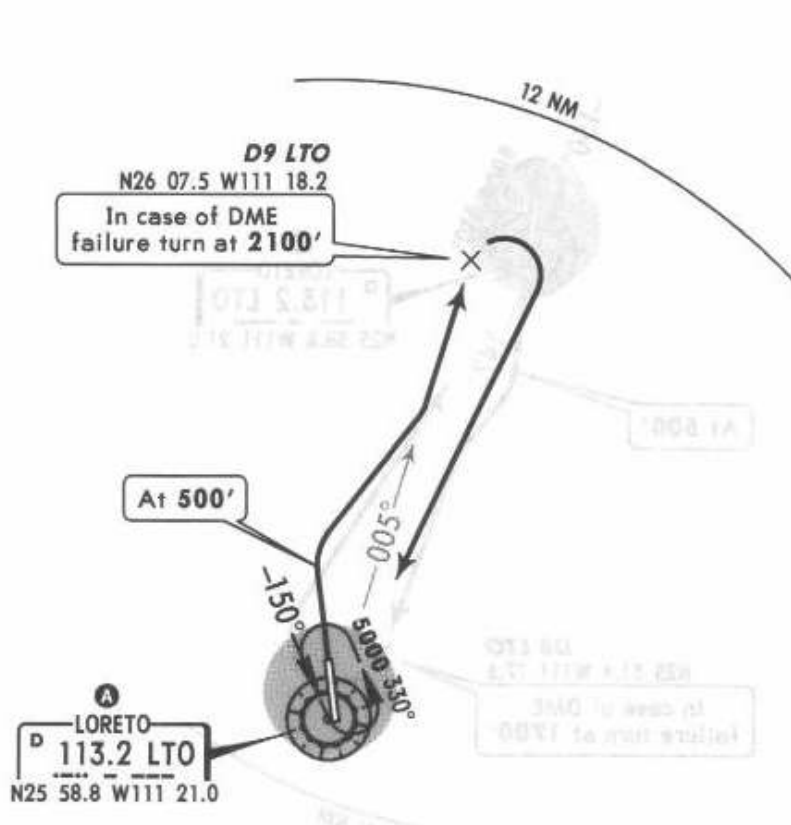
NOT TO BE USED FOR ACTUAL NAVIGATION

Apt Elev
34'

Trans level: FL 195 Trans alt: 18500'

22 OCT 04

DEPARTURE RWY 34
LORETO TWO BRAVO (LTO2B)



This SID requires a minimum climb gradient of 260' per NM to 6000'.

| | | | | | | |
|--------------|-----|-----|-----|-----|------|------|
| Gnd speed-KT | 75 | 100 | 150 | 200 | 250 | 300 |
| 260' per NM | 325 | 433 | 650 | 867 | 1083 | 1300 |

| A MINIMUM CROSSING ALTITUDE | | | |
|-----------------------------|-------|-----------|------|
| CEN | V-42 | UJ-2 | 3700 |
| LAP | V-1E | UJ-1E | 6600 |
| LAP | V-1 | UJ-9, J-1 | 5700 |
| LAP | V-1W | UJ-20 | 5900 |
| GRN | V-42 | UJ-20 | 6100 |
| SRL | V-1-4 | UJ-9, J-1 | 6100 |
| SJD | V-4 | | 6600 |
| GYM | V-50 | | 3100 |

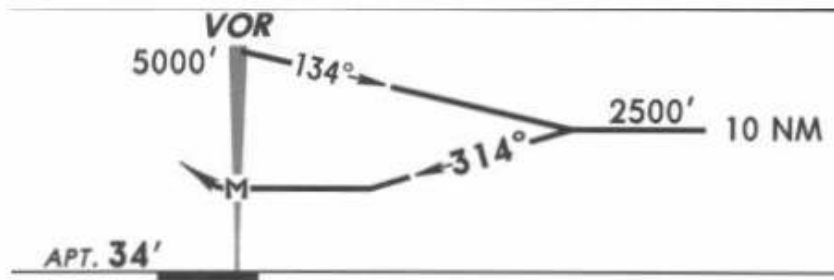
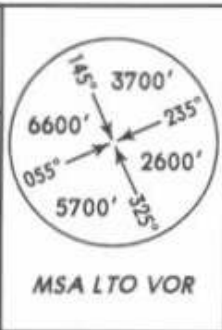
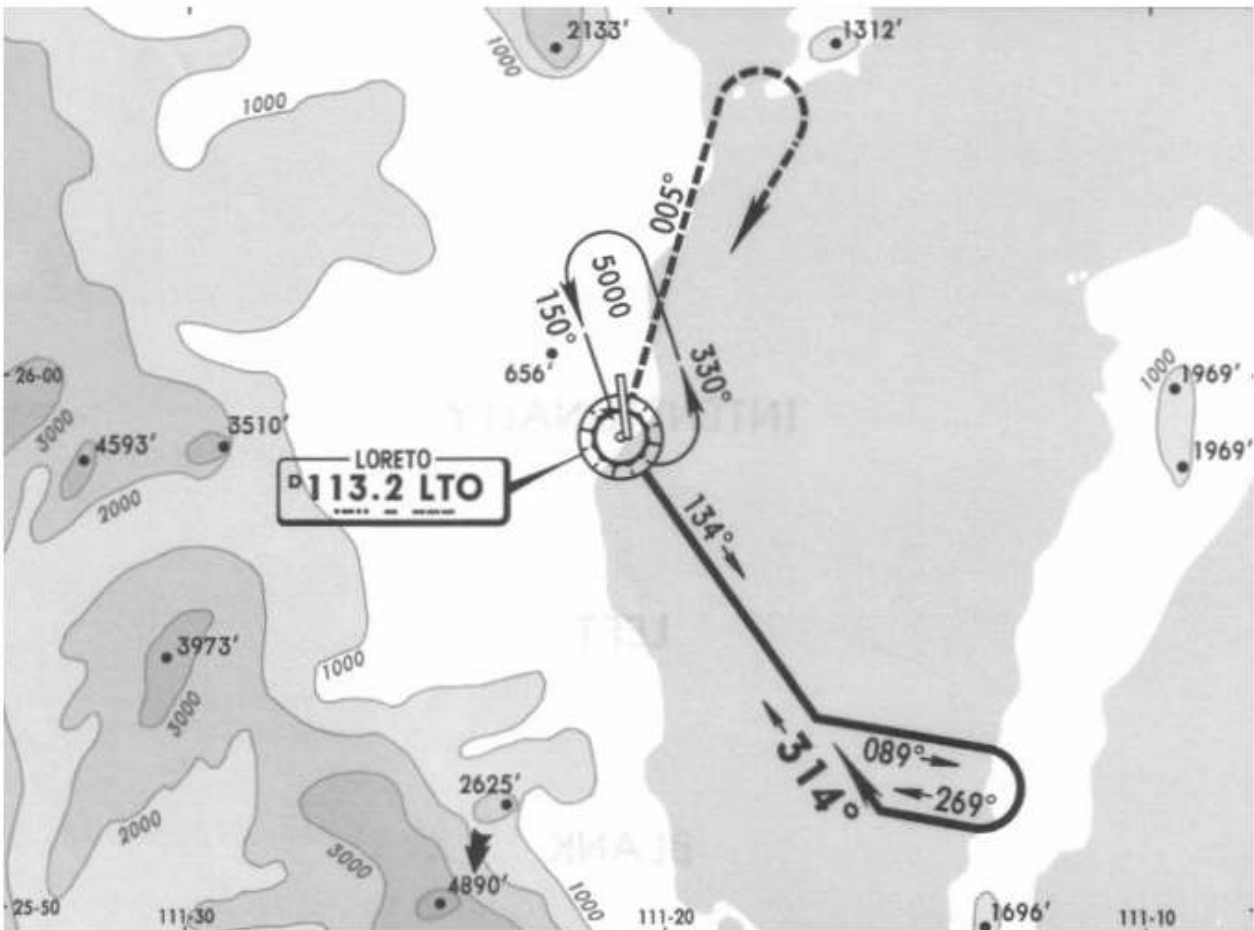
ROUTING

Climb on runway heading until reaching 500', then turn RIGHT and proceed on LTO R-005 to D9 LTO (to 2100' in case of DME failure). Turn RIGHT within 12 NM to LTO, crossing at the MCA A for the assigned route or in accordance with ATC instructions.

*LORETO Tower 118.4

26 SEP 03

| | | | | |
|----------------------------|----------------------------------|--------|--------------------------------|---------------------|
| VOR LTO 113.2 | Final Apch Crs 314° | No FAF | MDA(H) Refer to Minimums | Apt Elev 34' |
|----------------------------|----------------------------------|--------|--------------------------------|---------------------|



MISSED APCH: Climbing RIGHT turn to intercept and climb outbound on LTO VOR R-005, then turn RIGHT within 10 NM to the minimum holding altitude.

| MAX TIME TO TURN | | | | | | | |
|------------------|------|------|------|------|------|------|------|
| Gnd Speed-Kts | 80 | 100 | 120 | 140 | 160 | 180 | 200 |
| 7 NM to turn | 5:15 | 4:12 | 3:30 | 3:00 | 2:38 | 2:20 | 2:06 |

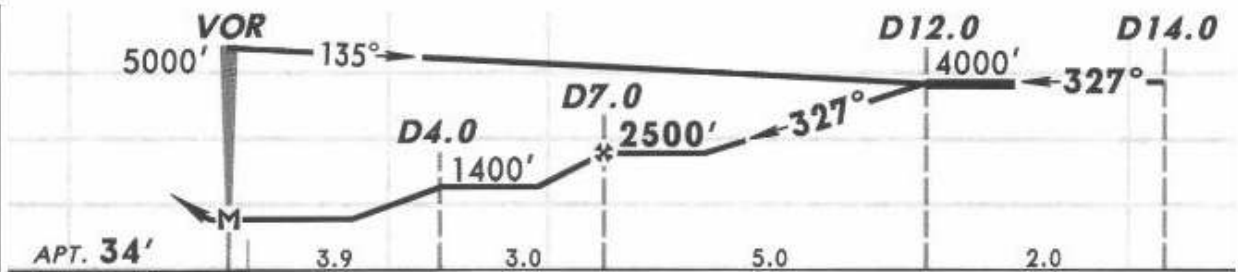
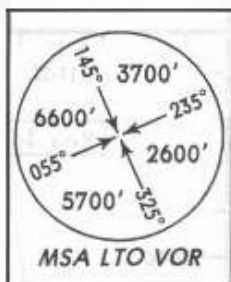
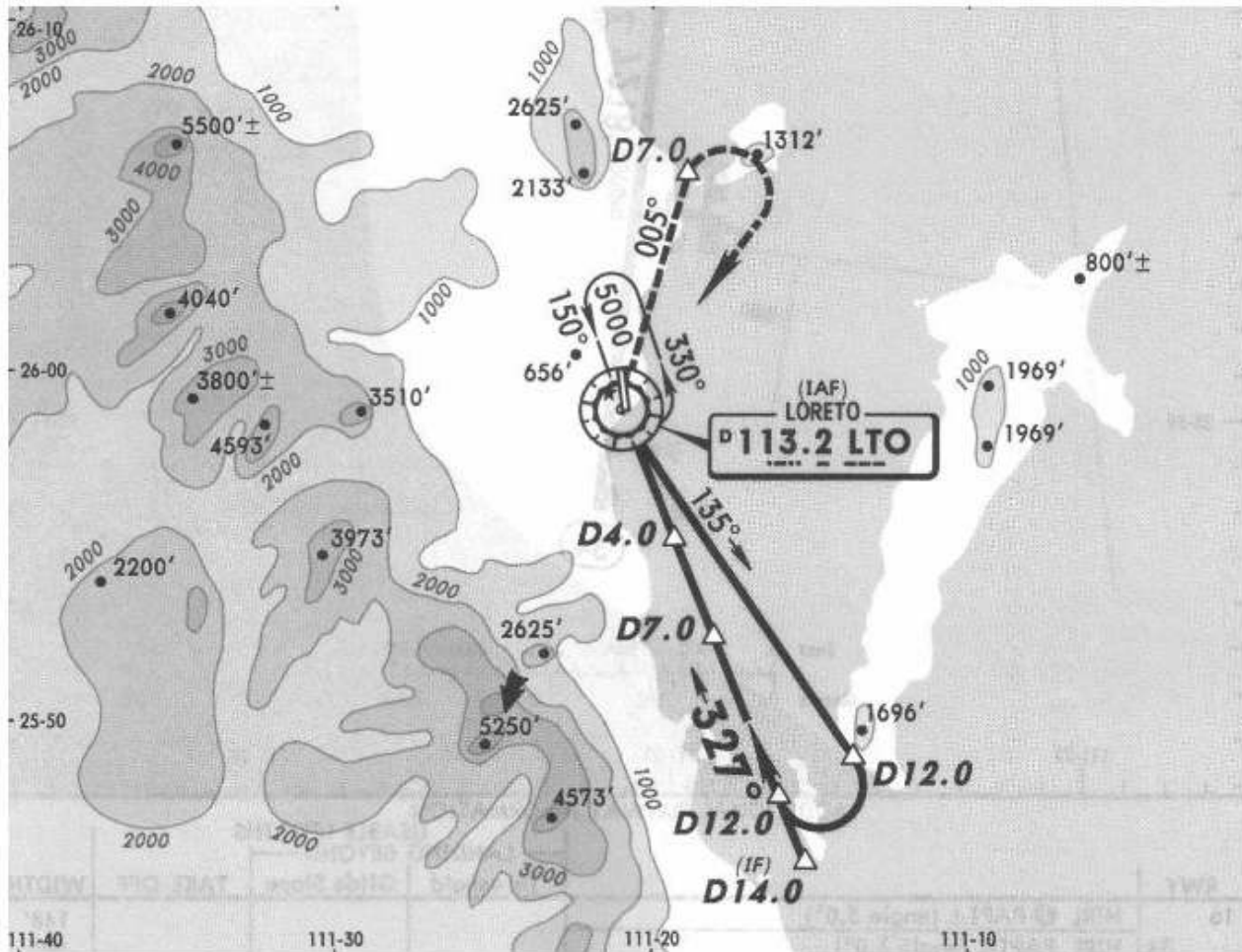
Alt Set: MB (IN on req) Apt Elev: 1 MB Trans Level: FL 195 Trans alt: 18500'

NOT TO BE USED FOR ACTUAL NAVIGATION

*LORETO Tower 118.4

26 SEP 03

| | | | | |
|----------------------------|----------------------------------|---|------------------------------|---------------------|
| VOR LTO 113.2 | Final Apch Crs 327° | Minimum Alt D7.0 2500' (2466') | MDA(H) 720' (686') | Apt Elev 34' |
|----------------------------|----------------------------------|---|------------------------------|---------------------|



MISSED APCH: Climbing RIGHT turn to intercept and climb
outbound on LTO VOR R-005 to D7.0, make a RIGHT turn
within 10 NM to the minimum holding altitude.

Alt Set: MB (IN on req) Apt Elev: 1 MB Trans Level: FL 195 Trans Alt: 18500'

NOT TO BE USED FOR ACTUAL NAVIGATION