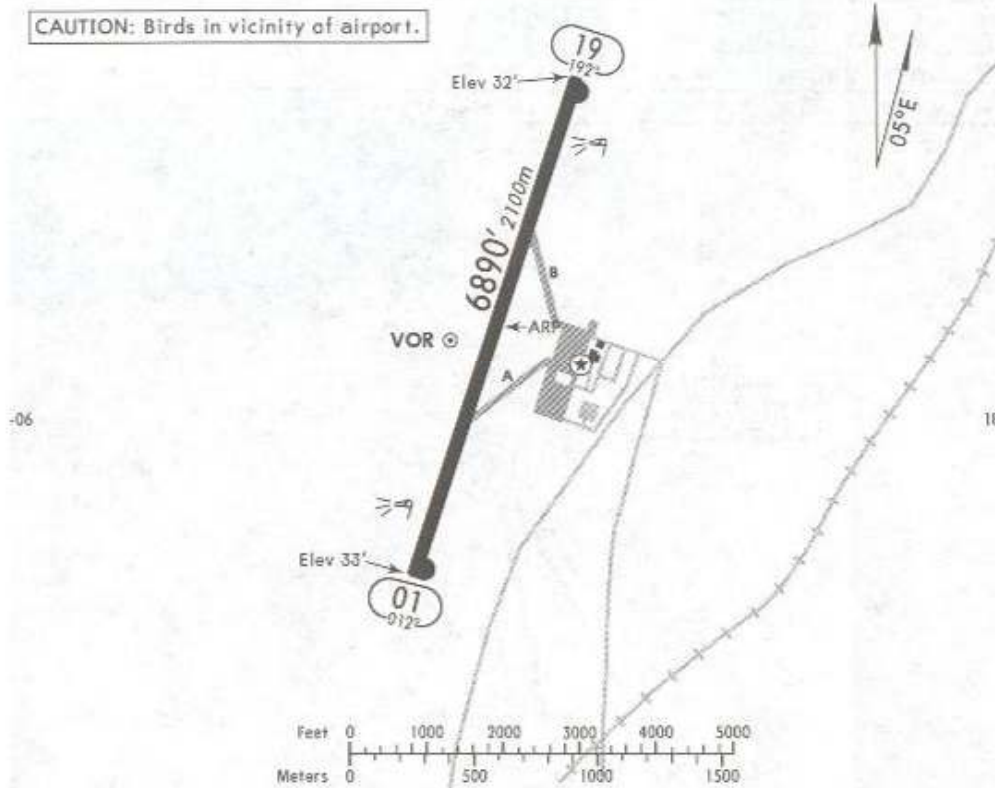


21 AUG 09

Eff 27 Aug

Apt Elev **36'**
N18 06.2 W094 34.8

*MINATITLAN INTL Tower 118.1



ADDITIONAL RUNWAY INFORMATION

RWY		USABLE LENGTHS			WIDTH
		Threshold	Landing Beyond Glide Slope	TAKE-OFF	
01 19	HIRL REIL PAPI-L (angle 3.0°)				148' 45m

NOT TO BE USED FOR ACTUAL NAVIGATION

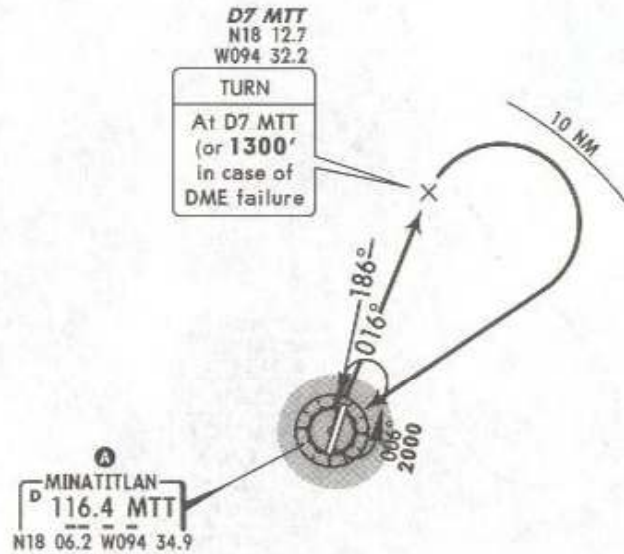
Apt Elev
36'

Trans level: FL 195 Trans alt: 18500'

14 JAN 05

EFF 20 Jan

DEPARTURE RWY 01
MINATITLAN TWO ALFA (MTT2A)



A MINATITLAN
D 116.4 MTT
N18 06.2 W094 34.9

A MINIMUM CROSSING ALTITUDE			
MID		UJ-16	2000
VSA	V-16	UJ-5	2000
TGZ	A-552, V-22	UA-552	2500
IZT	V-31		2500
OAX	V-16	UJ-16	2500
CUA		UJ-64	2500
PBC		UJ-5	4000
VER	A-552, V-22	UA-552	5000

INITIAL CLIMB

Climb via MTT R-016 to D7 MTT (to 1300' in case of DME failure). Turn RIGHT within 10 NM to MTT and cross at the required MCA **A** of the assigned route or in accordance with ATC instructions.

NOT TO BE USED FOR ACTUAL NAVIGATION

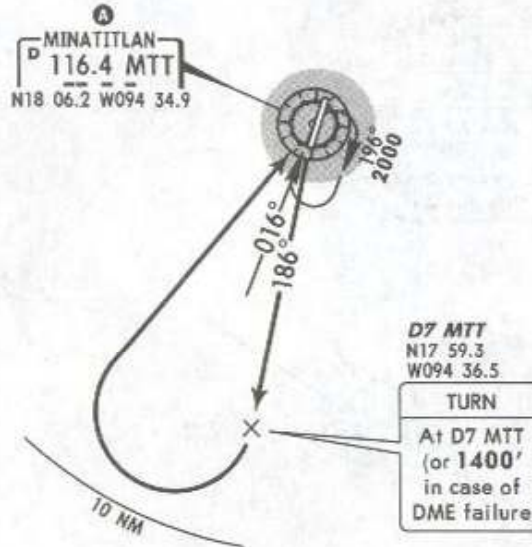
Apt Elev
36'

Trans level: FL 195 Trans alt: 18500'

14 JAN 05

Eff 20 Jan

DEPARTURE RWY 19
MINATITLAN TWO BRAVO (MTT2B)



A MINIMUM CROSSING ALTITUDE

MID		UJ-16	2000
VSA	V-16	UJ-5	2000
TGZ	A-552, V-22	UA-552	2500
IZT	V-31		2500
OAX	V-16	UJ-16	2500
CUA		UJ-64	2500
PBC		UJ-5	4000
VER	A-552, V-22	UA-552	5000

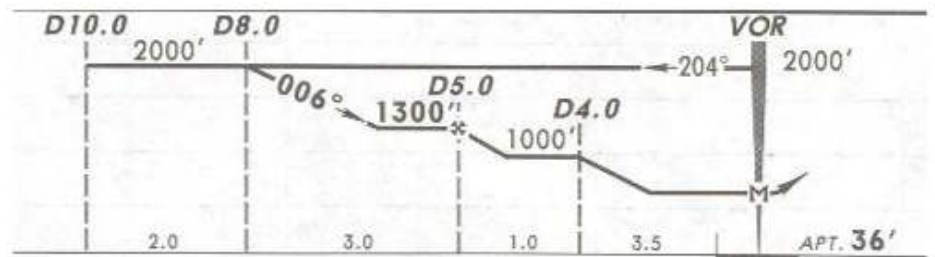
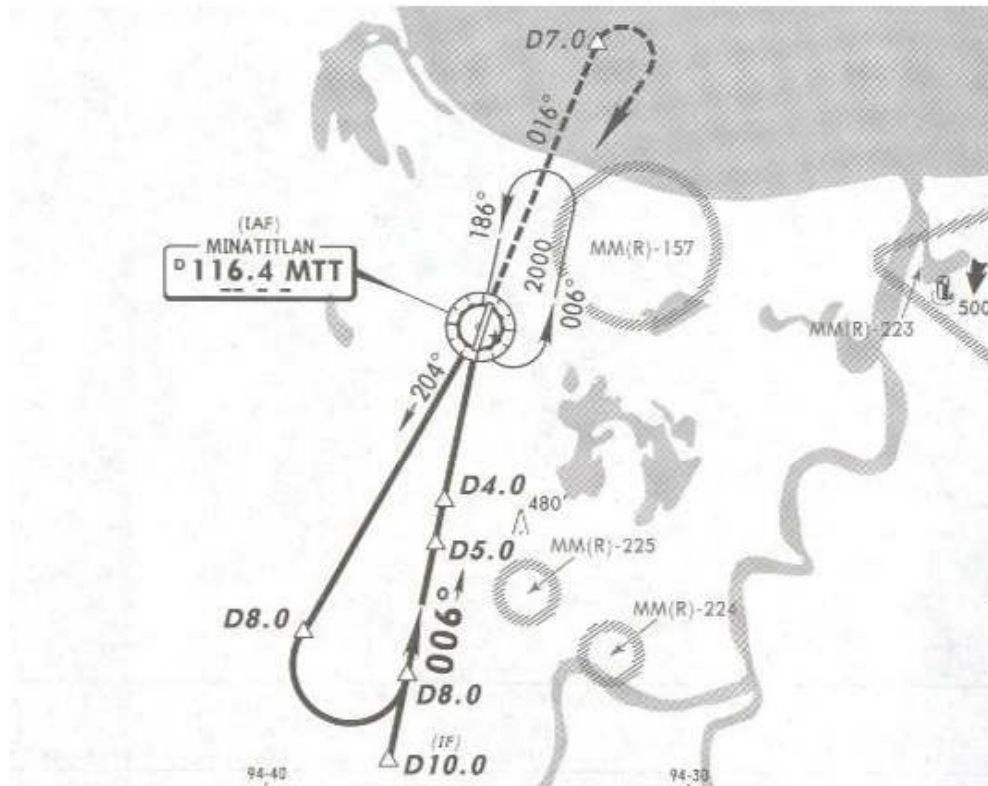
INITIAL CLIMB

Climb via MTT R-186 to D7 MTT (to 1400' in case of DME failure). Turn RIGHT within 10 NM to MTT and cross at the required MCA **A** of the assigned route or in accordance with ATC instructions.

NOT TO BE USED FOR ACTUAL NAVIGATION

*MINATITLAN INTL Tower 118.1

VOR MTT 116.4	Final Apch Crs 006°	Minimum Alt D5.0 1300' (1264')	MDA(H) 600' (564')	Apt Elev 36'
----------------------------	----------------------------------	---	------------------------------	---------------------

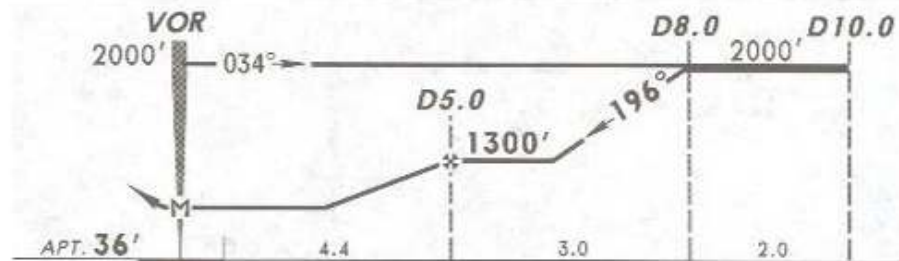
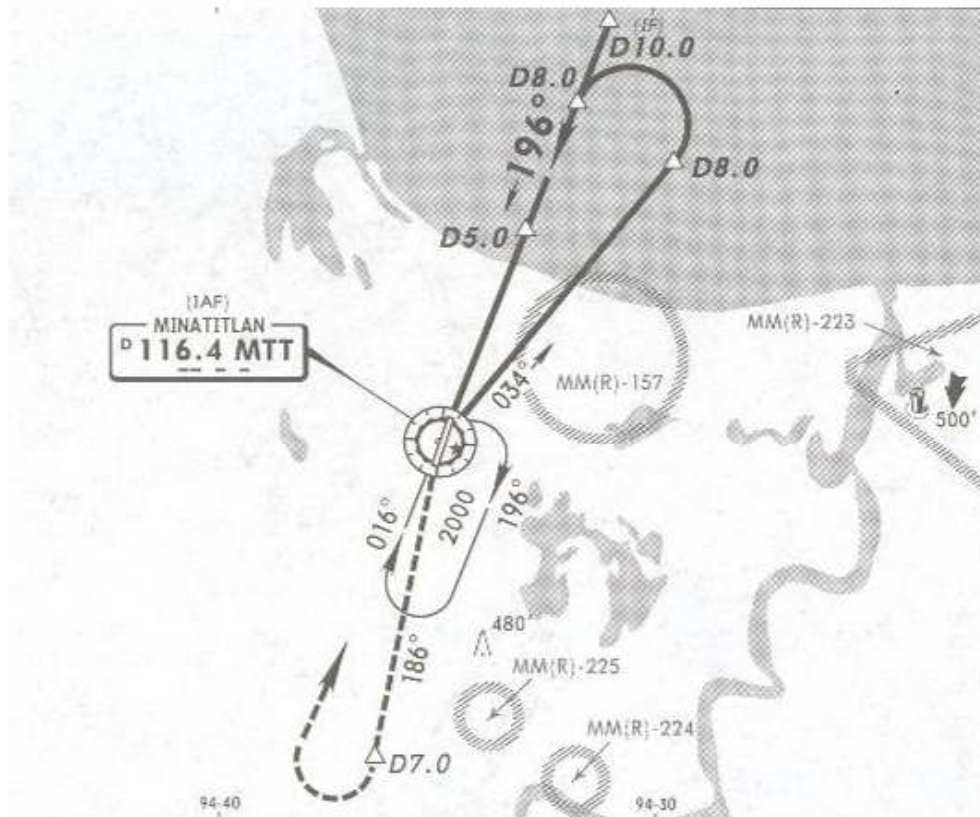


MISSED APCH: Climb outbound on MTT VOR R-016 to D7.0, then make a **RIGHT** teardrop turn within 10 NM to MTT VOR to the minimum holding altitude.

Alt Set: MB (IN on req) Apt Elev: 1 MB Trans level: FL 195 Trans alt: 18500'

NOT TO BE USED FOR ACTUAL NAVIGATION

VOR MTT 116.4	Final Apch Crs 196°	Minimum Alt D5.0 1300' (1264')	MDA(H) 600' (564')	Apt Elev 36'
----------------------------	----------------------------------	---	------------------------------	---------------------



MISSED APCH: Climb outbound on MTT VOR R-186 to D7.0, then make a RIGHT teardrop turn within 10 NM to MTT VOR to the minimum holding altitude.

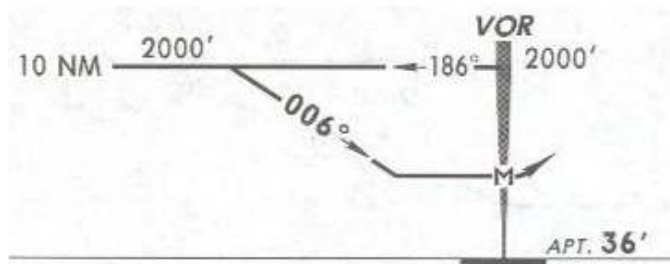
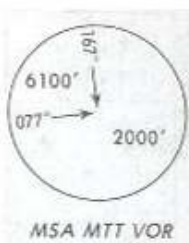
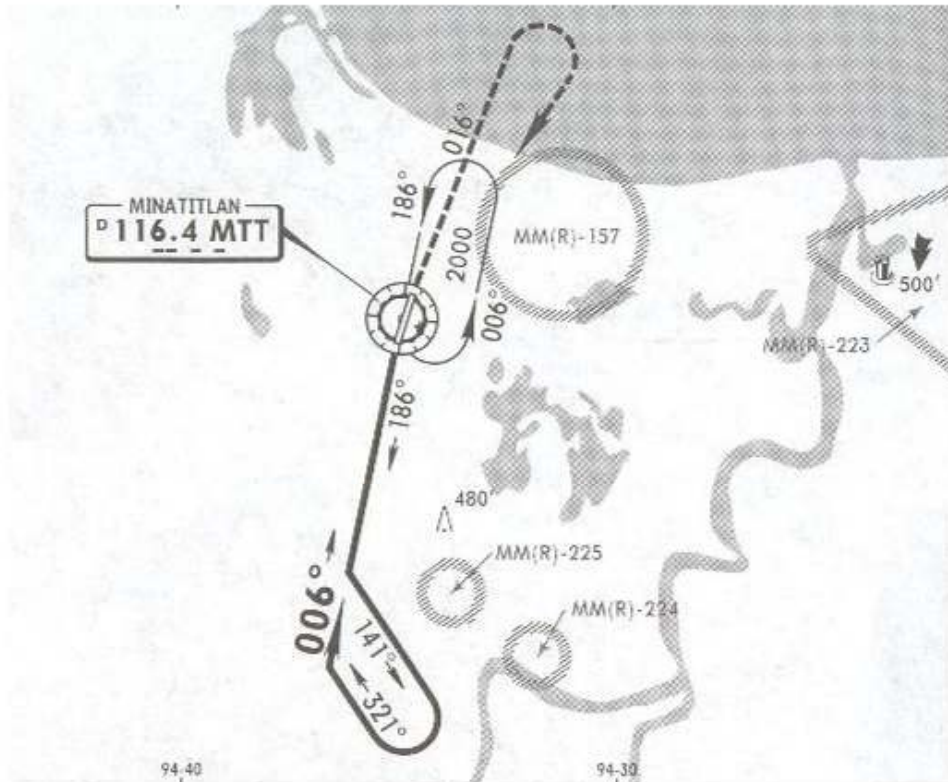
Alt Set: MB (IN on req) Apt Elev: 1 MB Trans level: FL 195 Trans alt: 18500'

*MINATITLAN INTL Tower 118.1

21 AUG 09

Eff 27 Aug

VOR MTT 116.4	Final Apch Crs 006°	No FAF	MDA(H) 700' (664')	Apt Elev 36'
----------------------------	----------------------------------	--------	------------------------------	---------------------



MISSED APCH: Climb outbound on MTT VOR R-016, then make a **RIGHT** teardrop turn within 10 NM to MTT VOR to the minimum holding altitude.

Gnd speed-Kts	MAX TIME TO TURN						
	80	100	120	140	160	180	200
7 NM to turn	5:15	4:12	3:30	3:00	2:38	2:20	2:06

Alt Set: MB (IN on req) Apt Elev: 1 MB Trans level: FL 195 Trans alt: 18500'

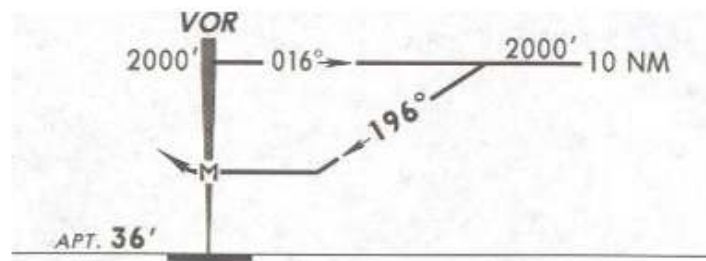
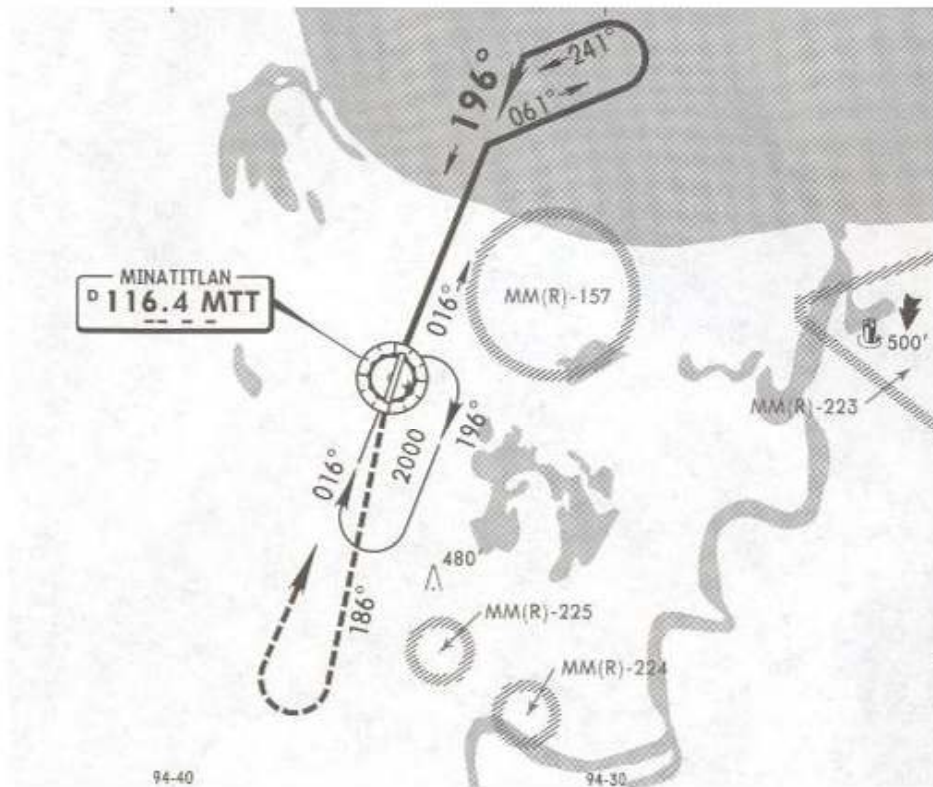
NOT TO BE USED FOR ACTUAL NAVIGATION

21 AUG 09

*MINATITLAN INTL Tower 118.1

Eff 27 Aug

VOR MTT 116.4	Final Apch Crs 196°	No FAF	MDA(H) 660' (624')	Apt Elev 36'
----------------------------	----------------------------------	--------	------------------------------	---------------------



MISSED APCH: Climb outbound on MTT VOR R-186, then make a **RIGHT** teardrop turn within 10 NM to MTT VOR to the minimum holding altitude.

	MAX TIME TO TURN							
	Gnd speed-Kts	80	100	120	140	160	180	200
7 NM to turn	5:15	4:12	3:30	3:00	2:38	2:20	2:06	

Alt Set: MB (IN on req) Apt Elev: 1 MB Trans level: FL 195 Trans alt: 18500'

NOT TO BE USED FOR ACTUAL NAVIGATION