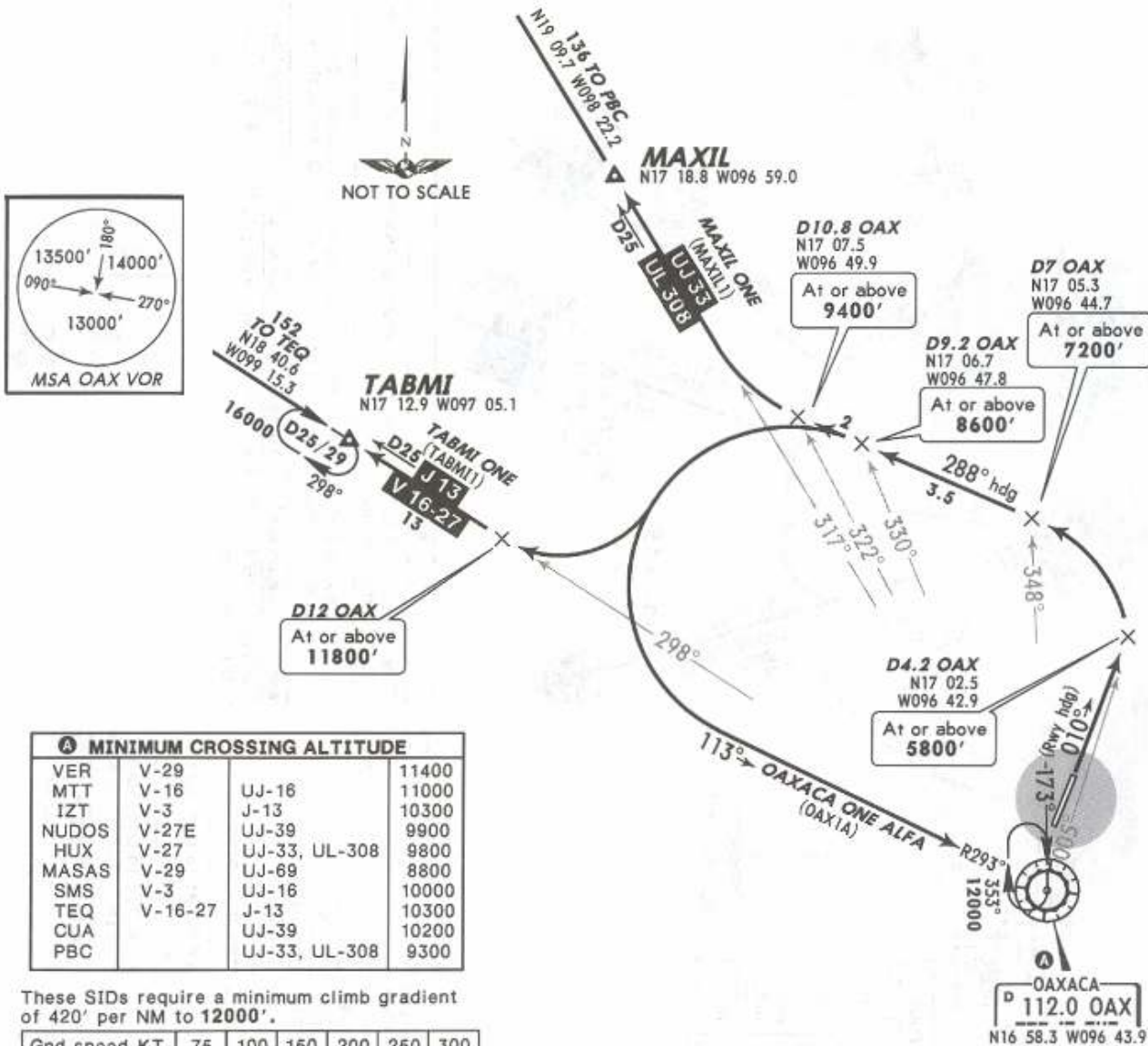


Apt Elev 4989' Trans level: FL195 Trans alt: 18500'  
These SIDs are subject to pilot request only for aircraft that comply with the minimum climb gradient.

11 MAR 05

**DEPARTURES RWY 01**  
MAXIL ONE (MAXIL1), OAXACA ONE ALFA (OAX1A),  
TABMI ONE (TABMI1)



INITIAL CLIMB	
Climb on runway heading to D4.2 OAX, turn LEFT and proceed on a 288° heading.	
SID	ROUTING
<b>MAXIL ONE (MAXIL1)</b>	Intercept OAX R-317, continue climbing to MAXIL or in accordance with ATC instructions.
<b>OAXACA ONE ALFA (OAX1A)</b>	At OAX R-330/D9.2 turn LEFT within 10 NM of OAX, intercept OAX R-293 to OAX, cross OAX according to the MCA <sup>A</sup> of the assigned route or ATC instructions.
<b>TABMI ONE (TABMI1)</b>	At OAX R-330/D9.2 turn LEFT to intercept OAX R-298 to TABMI. Then on assigned route or in accordance with ATC instructions.

NOT TO BE USED FOR ACTUAL NAVIGATION

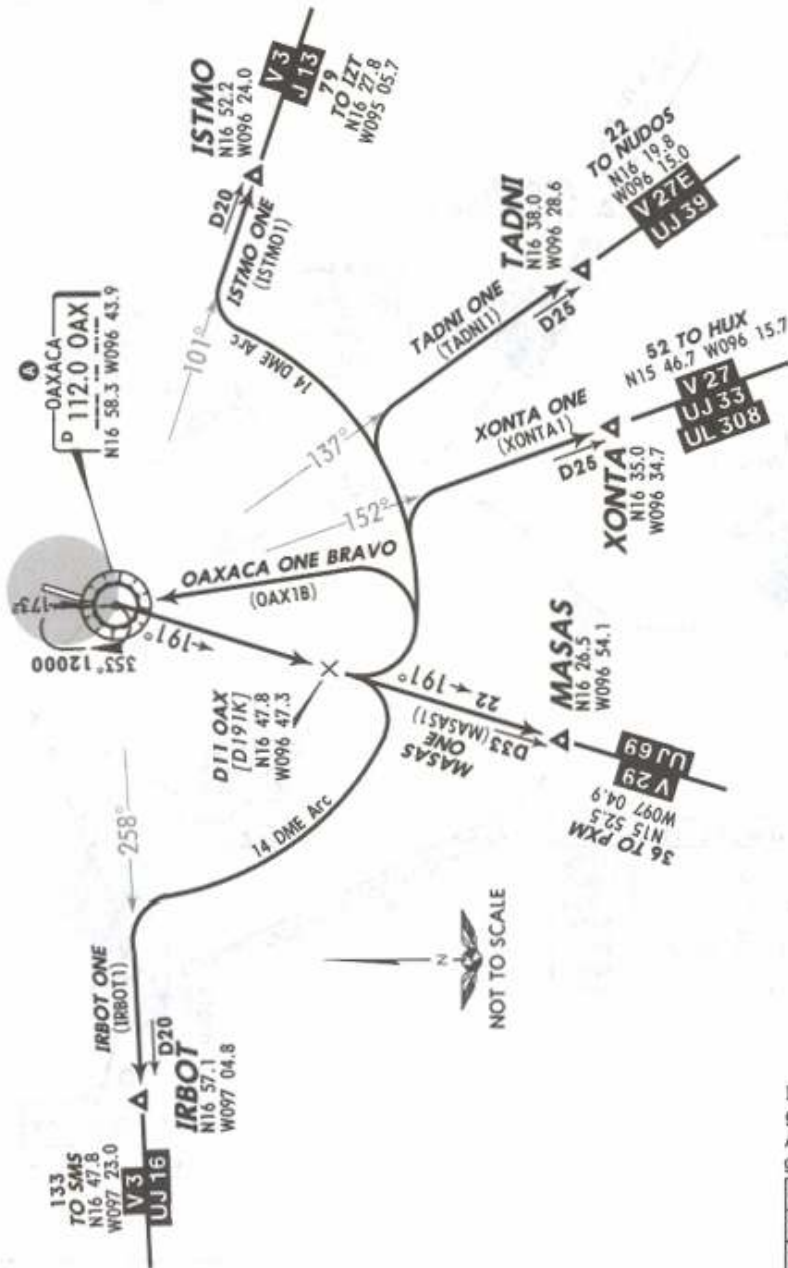
Apt Elev  
4989'

Trans level: FL 195 Trans alt: 18500'

11 MAR 05

DEPARTURES RWY 19

IRBOT ONE (IRBOT1), ISTMO ONE (ISTMO1), MASAS ONE (MASAS1),  
OAXACA ONE BRAVO (OAX1B), TADNI ONE (TADNI1), XONTA ONE (XONTA1)



**MINIMUM CROSSING ALTITUDE**

VER	V-29		11400
MTT	V-16	UJ-16	11000
IZT	V-3	J-13	10300
NUDOS	V-27E	UJ-39	9900
HUX	V-27	UJ-33, UL-308	9800
MASAS	V-29	UJ-69	8800
SMS	V-3	UJ-16	10000
TEQ	V-16-27	J-13	10300
CUA		UJ-39	10200
PBC		UJ-33, UL-308	9300

IRBOT ONE SID requires a minimum climb gradient of 280' per NM to 11000'.  
All other SIDs require a minimum climb gradient of 250' per NM to 11500'.

Gnd speed-KT	75	100	150	200	250	300
250' per NM	313	417	625	833	1042	1250
280' per NM	350	467	700	933	1167	1400

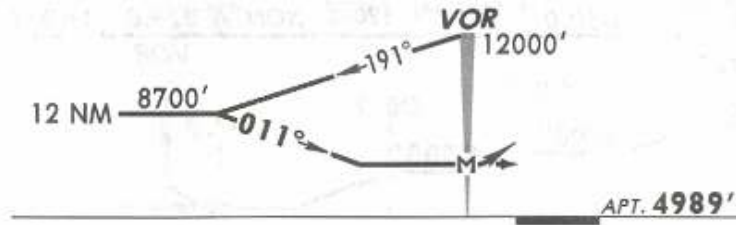
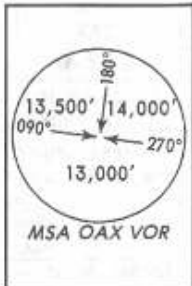
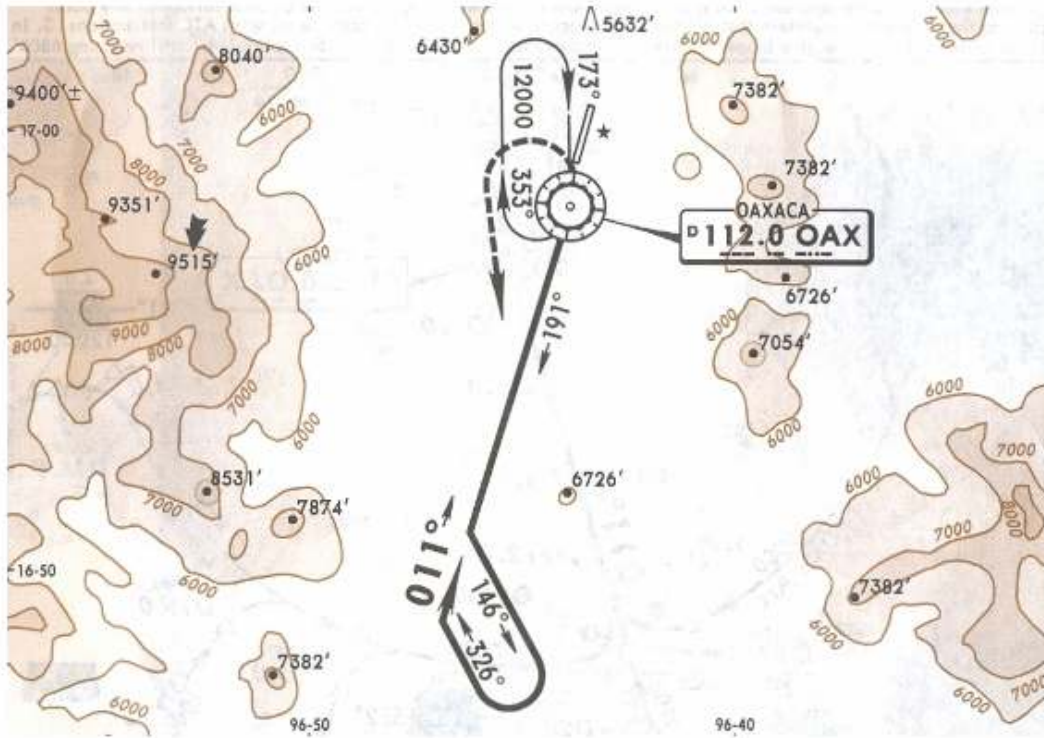
SID	ROUTING
IRBOT ONE (IRBOT1)	Climb on OAX R-191 to D11, turn RIGHT on the OAX 14 DME Arc until intercepting OAX R-258 to IRBOT. Then continue on assigned route or according to ATC instructions.
ISTMO ONE (ISTMO1), TADNI ONE (TADNI1), XONTA ONE (XONTA1)	Climb on OAX R-191 to D11, turn LEFT on the OAX 14 DME Arc until intercepting the corresponding radial from OAX to ISTMO, TADNI or XONTA. Continue on assigned route or in accordance with ATC instructions.
MASAS ONE (MASAS1)	Climb direct on OAX R-191 to MASAS and continue on assigned route or in accordance with ATC instructions.
OAXACA ONE BRAVO (OAX1B)	Climb on OAX R-191 to D11, turn LEFT within 14 NM to OAX and cross OAX according to the MCA of the assigned route or in accordance with ATC instructions.

NOT TO BE USED FOR ACTUAL NAVIGATION

\*OAXACA Approach      MEXICO Center Sector 2      \*OAXACA Tower  
 121.1                      128.0 when App Inop.                      118.3

15 DEC 06

VOR OAX <b>112.0</b>	Final Apch Crs <b>011°</b>	No FAF	MDA(H) Refer to Minimums	Apt Elev <b>4989'</b>
----------------------------	----------------------------------	--------	--------------------------------	-----------------------



**MISSED APCH:** Climbing LEFT turn to intercept OAX VOR R-191.  
 Proceed on the approach track to the minimum holding altitude.

Alt Set: MB(IN on req)    Apt Elev: 170 MB    Trans level: FL 195    Trans alt: 18500'  
 1. Maximum speed for approach 160 KIAS or minimum for maneuvering.

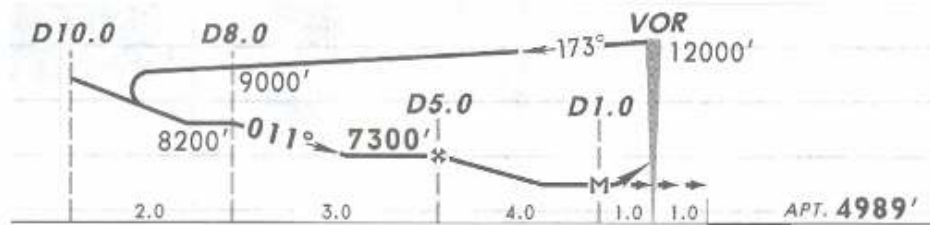
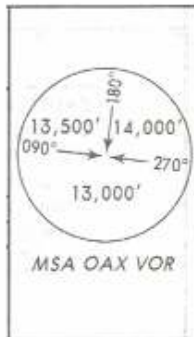
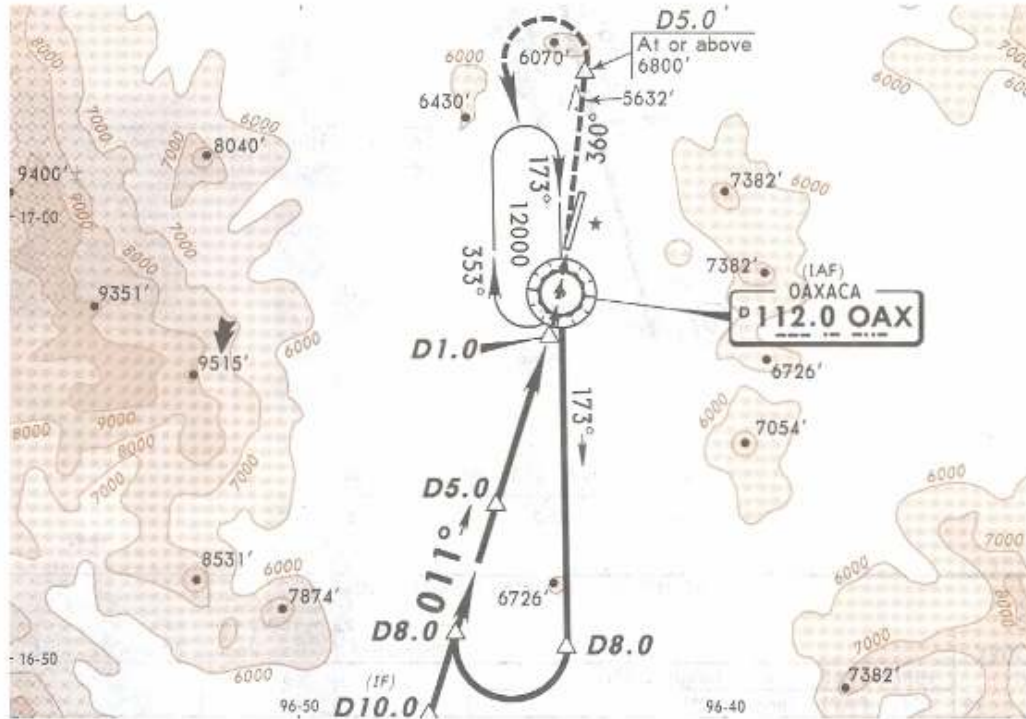
**NOT TO BE USED FOR ACTUAL NAVIGATION**

\*OAXACA Approach  
121.1

MEXICO Center Sector 2  
128.0 when App incp.

\*OAXACA Tower  
118.3

VOR OAX <b>112.0</b>	Final Apch Crs <b>011°</b>	Minimum Alt D5.0 <b>7300'</b> (2311')	MDA(H) <b>5840'</b> (851')	Apt Elev <b>4989'</b>
----------------------------	----------------------------------	---	-------------------------------	-----------------------



**MISSED APCH:** Climb outbound on OAX VOR R-360 to D5.0, then turn LEFT within 7 NM to OAX VOR and intercept OAX VOR R-191. Proceed on the reverse approach track to the minimum holding altitude.

In case of DME failure during Missed Apch:

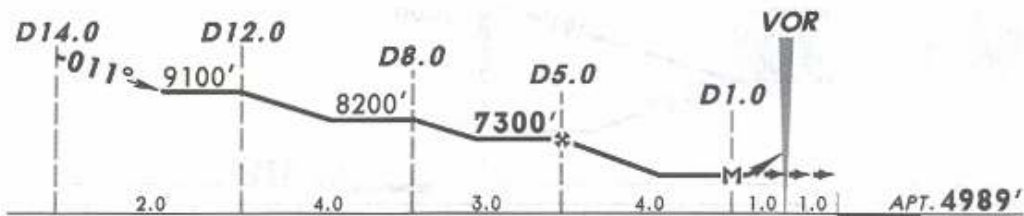
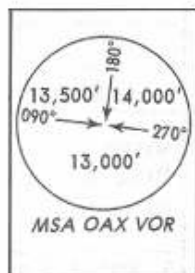
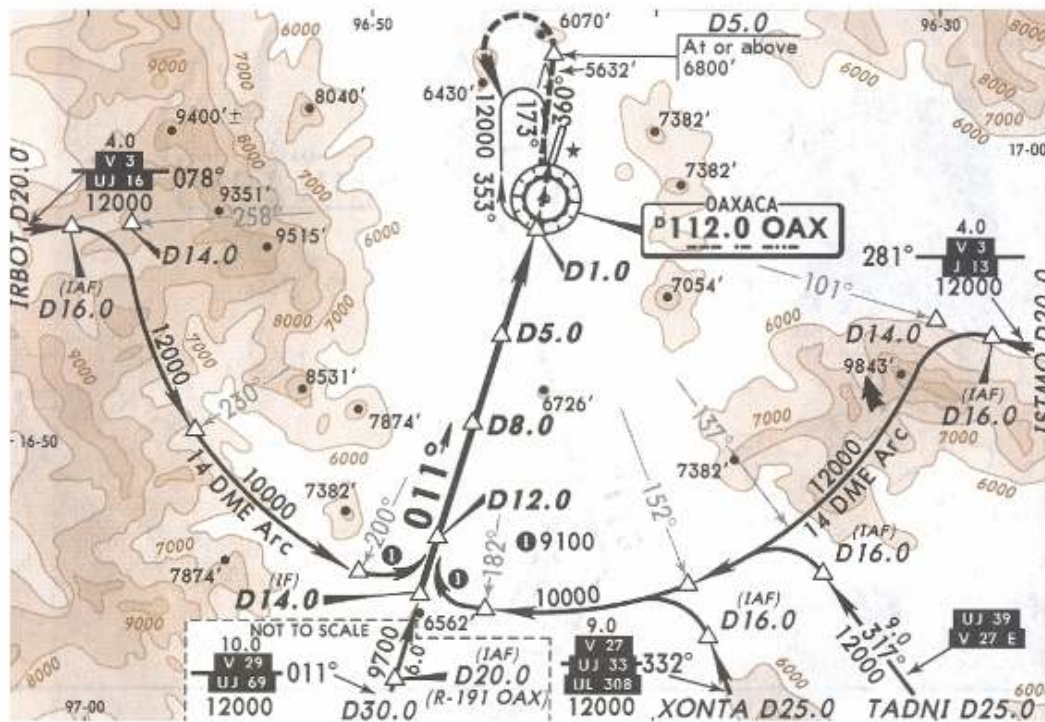
Gnd Speed-Kts	80	100	120	140	160	180	200
MAX outbound distance 6 NM from MAP.	4:30	3:36	3:00	2:34	2:15	2:00	1:48

Alt Set: MB(IN on req) Apt Elev: 170 MB Trans level: FL 195 Trans alt: 18500'  
1. Maximum speed for approach 160 KIAS or minimum for maneuvering. 2. In case of the loss of an engine below MDA(H) a climb gradient of 470'/NM must be maintained until reaching 6800'.

**NOT TO BE USED FOR ACTUAL NAVIGATION**

\*OAXACA Approach 121.1      MEXICO Center Sector 2 128.0 when App inop.      \*OAXACA Tower 118.3

VOR OAX <b>112.0</b>	Final Apch Crs <b>011°</b>	Minimum Alt D5.0 <b>7300'</b> (2311')	MDA(H) <b>5840'</b> (851')	Apt Elev <b>4989'</b>
----------------------------	----------------------------------	---	-------------------------------	-----------------------



**MISSED APCH:** Climb outbound on OAX VOR R-360 to D5.0, then turn LEFT within 7 NM to OAX VOR and intercept OAX VOR R-191. Proceed on the reverse approach track of VOR DME-1 Rwy 01 Approach (see 13-1) to the minimum holding altitude.

In case of DME failure during Missed Apch:

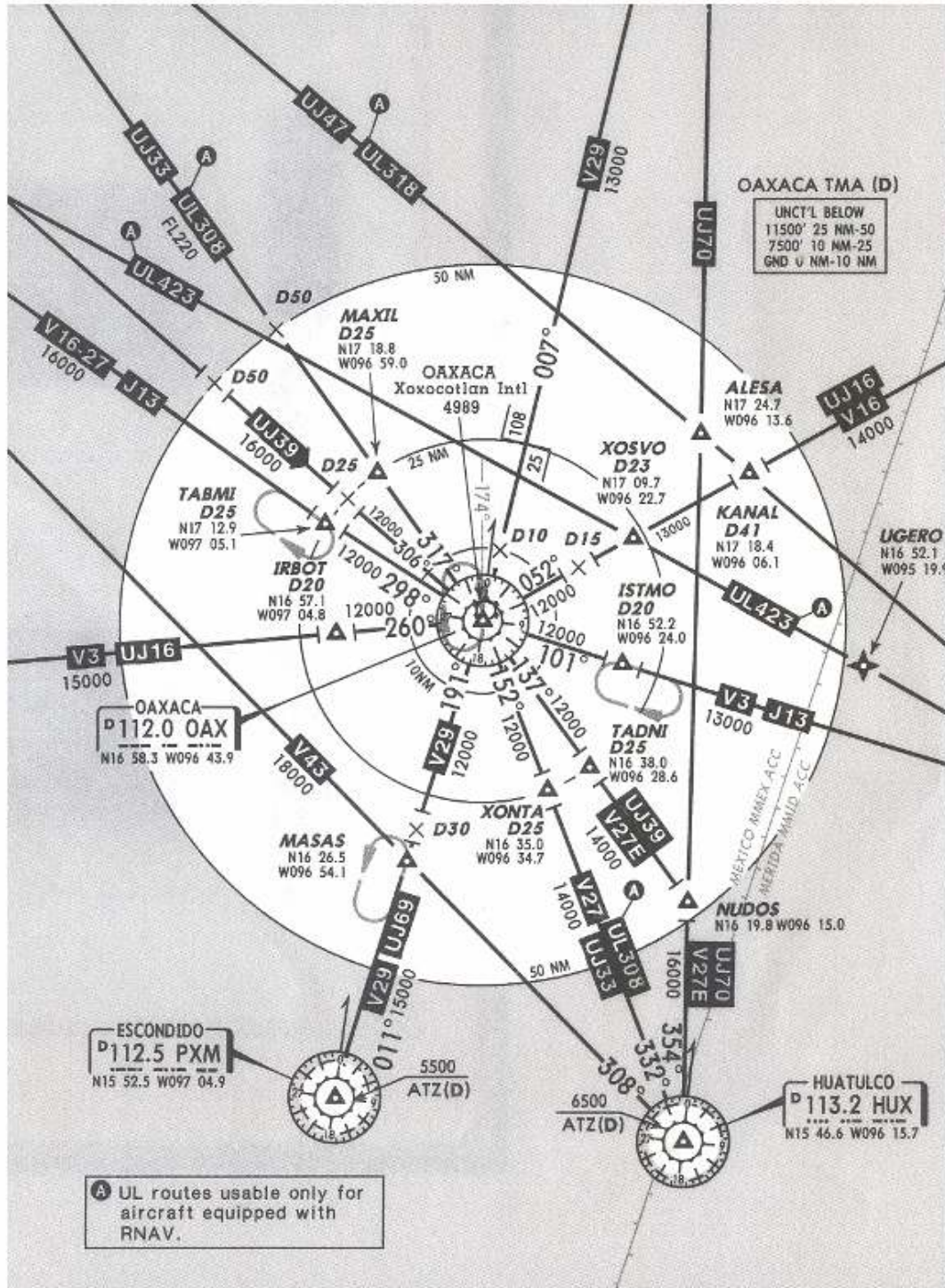
Gnd Speed-Kts	80	100	120	140	160	180	200
MAX outbound distance 6 NM from MAP.	4:30	3:36	3:00	2:34	2:15	2:00	1:48

Alt Set: MB(IN on req)      Apt Elev: 170 MB      Trans level: FL 195      Trans alt: 18500'  
 1. Maximum speed for approach 160 KIAS or minimum for maneuvering. 2. In case of DME failure at any point during the procedure, maintain last altitude and proceed to the station in accordance with ATC instructions. 3. In case of the loss of an engine below MDA(H) a climb gradient of 470'/NM must be maintained until reaching 6800'.

**NOT TO BE USED FOR ACTUAL NAVIGATION**

\*OAXACA Approach  
128.3

20 APR 07



**SPEED RESTRICTIONS**

**MAXIMUM IAS UNLESS OTHERWISE DEPICTED OR AUTHORIZED BY ATC**

**WITHIN MEXICO AIRSPACE**

- At or below 3000' AGL within 10 NM of any airport.....200 KTS
- At or below 10000' MSL within Mexico Airspace.....260 KTS
- At or below 10000' AGL within 30 NM of any airport.....250 KTS

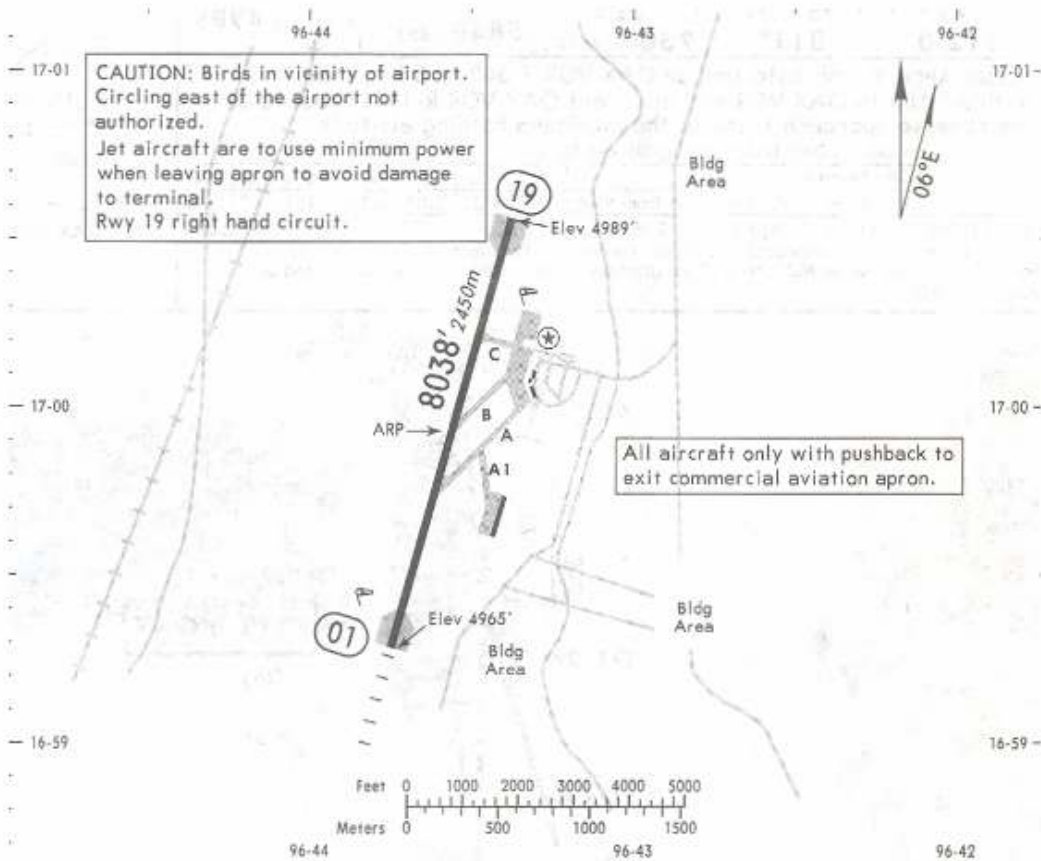
**WITHIN OAXACA TMA**

- At or below 8000' MSL of Xoxocotlan Intl Apt and within 10 NM of OAX VORDME.....200 KTS
- At or below 10000' MSL within 30 NM of OAX VORDME.....250 KTS

**NOT TO BE USED FOR ACTUAL NAVIGATION**

Apt Elev **4989'**  
N16 59.9 W096 43.6

\*OAXACA Tower: 118.3



	TAKE-OFF			FOR FILING AS ALTERNATE	
	Rwy 19	Rwy 01		VOR DME-1 Rwy 01 VOR DME-2 Rwy 01	
	DAY & NIGHT	DAY	NIGHT	A	1700-3
1 & 2 Eng	600-1	VFR	NA	B	
3 & 4 Eng				C	
				D	

NOT TO BE USED FOR ACTUAL NAVIGATION