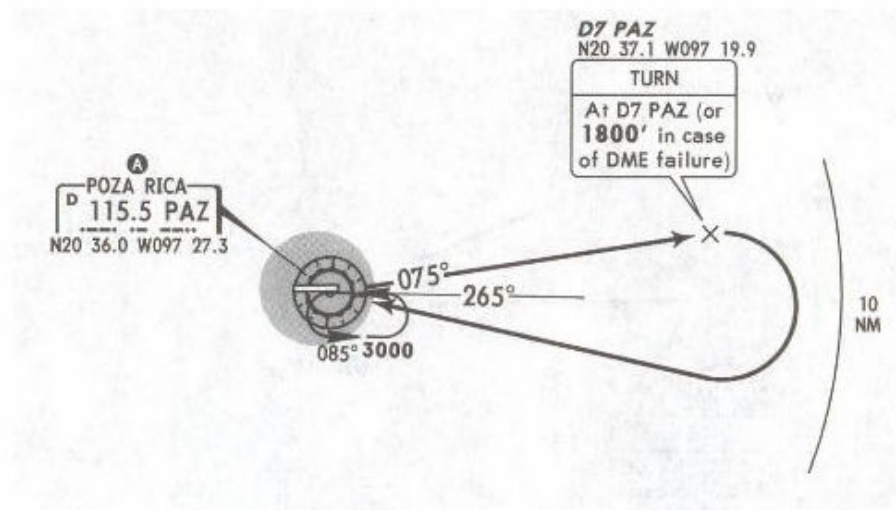


Apt Elev  
497'

Trans level: FL195 Trans alt: 18500'

26 JAN 07

**DEPARTURE RWY 08**  
POZA RICA TWO ALFA (PAZ2A)



MINIMUM CROSSING ALTITUDE			
APN	V-18		7000
NAU	V-23	A-552	3000
PCA	V-34	UJ-102	7000
TAM	V-23	A-552	3000



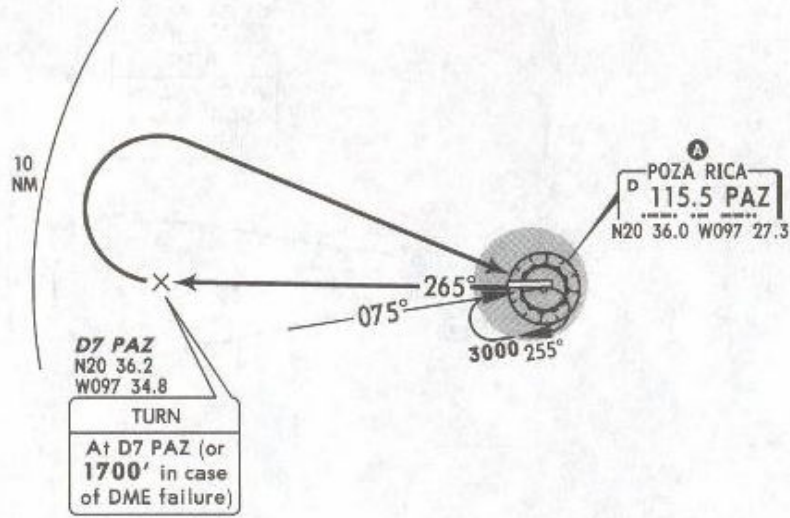
**INITIAL CLIMB**  
Climb on PAZ R-075 to D7 PAZ (to 1800' in case of DME failure), turn RIGHT within 10 NM from PAZ to cross PAZ at the MCA <sup>A</sup> for the assigned route or according to ATC instructions.

Apt Elev  
497'

Trans level: FL195 Trans alt: 18500'

26 JAN 07

**DEPARTURE RWY 26**  
POZA RICA TWO BRAVO (PAZ2B)



MINIMUM CROSSING ALTITUDE <sup>A</sup>			
APN	V-18		7000
NAU	V-23	A-552	3000
PCA	V-34	UJ-102	7000
TAM	V-23	A-552	3000



**INITIAL CLIMB**

Climb on PAZ R-265 to D7 PAZ (to 1700' in case of DME failure), turn RIGHT within 10 NM from PAZ to cross PAZ at the MCA <sup>A</sup> for the assigned route or according to ATC instructions.

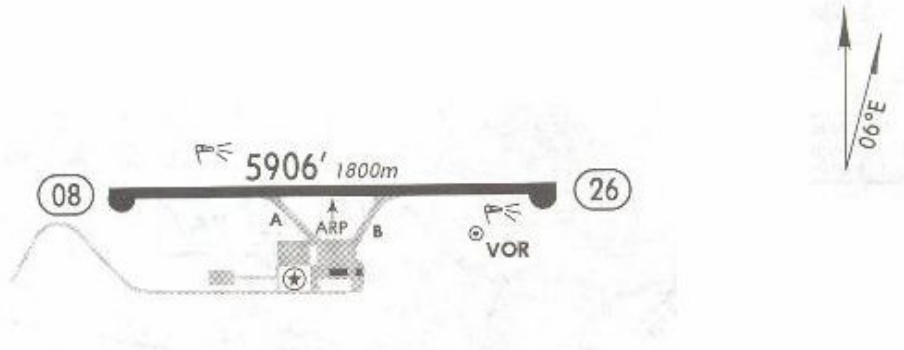
NOT TO BE USED FOR ACTUAL NAVIGATION

Apt Elev **497'**  
N20 36.1 W097 27.6

\*POZA RICA Tower 118.9

22 FEB 08

CAUTION: Birds in vicinity of airport.



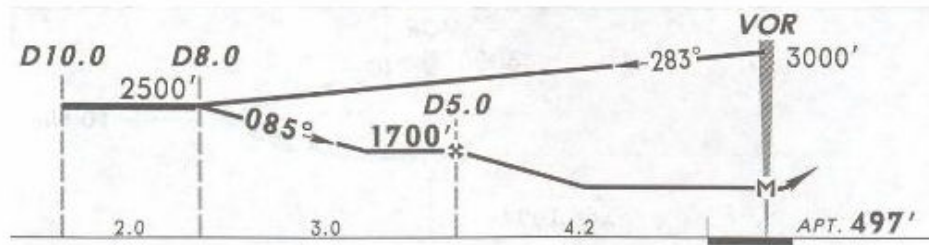
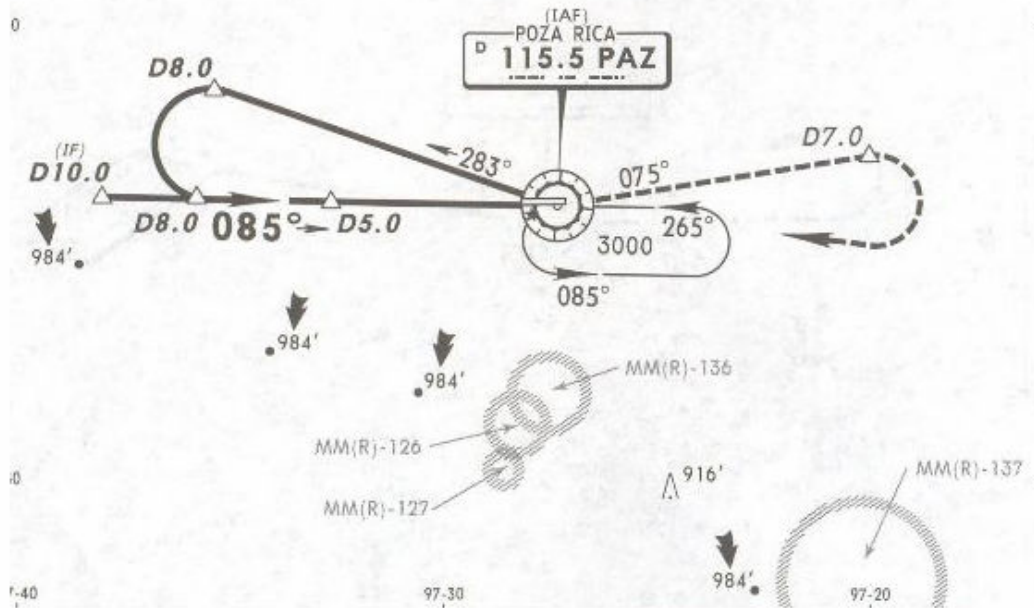
RWY	ADDITIONAL RUNWAY INFORMATION			WIDTH	
		USABLE LENGTHS LANDING BEYOND			
		Threshold	Glide Slope	TAKE-OFF	
08	HIRL PAPI-L (angle 3.0°)				148'
26	HIRL PAPI-R (angle 3.0°)				45m

NOT TO BE USED FOR ACTUAL NAVIGATION

\*POZA RICA Tower 118.9

22 FEB 08

VOR PAZ <b>115.5</b>	Final Apch Crs <b>085°</b>	Minimum Alt D5.0 <b>1700'</b> (1203')	MDA(H) <b>980'</b> (483')	Apt Elev <b>497'</b>
----------------------------	----------------------------------	---	------------------------------	----------------------



**MISSED APCH:** Climb outbound on PAZ VOR R-075 to D7.0, turn RIGHT within 10 NM to PAZ VOR to the minimum holding altitude.

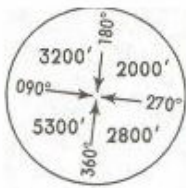
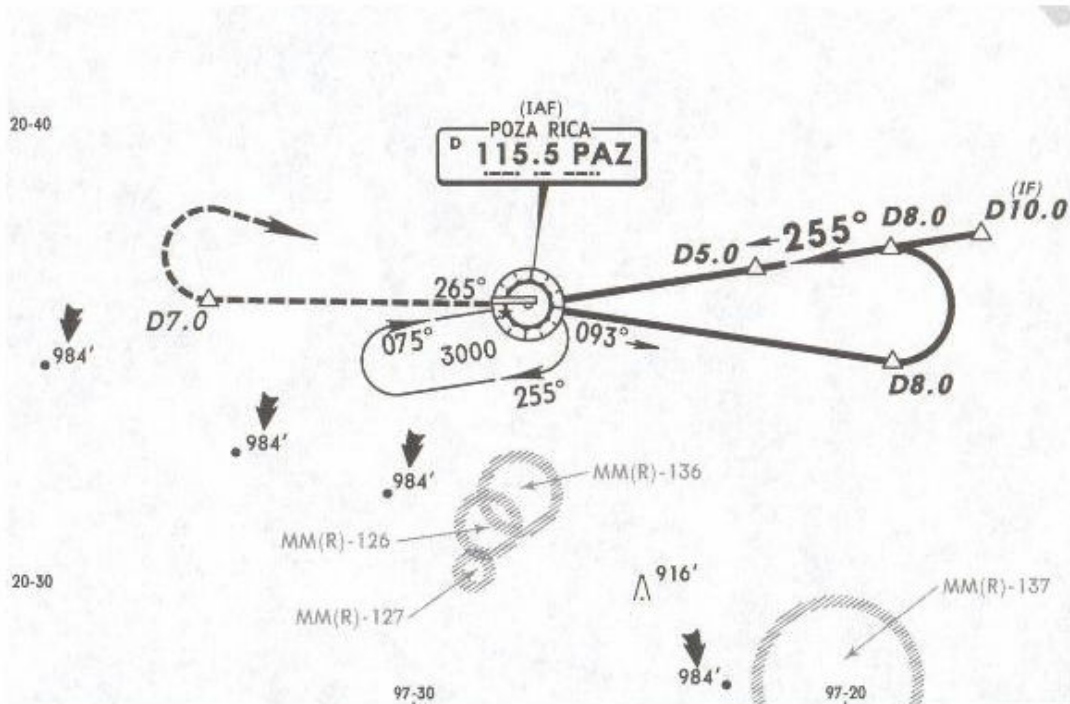
Alt Set: MB (IN on req) Apt Elev: 18 MB Trans level: FL 195 Trans alt: 18500'  
1. CAUTION: Do not use radio altimeter as reference to determine altitude over the airport due to orographic conditions.

NOT TO BE USED FOR ACTUAL NAVIGATION

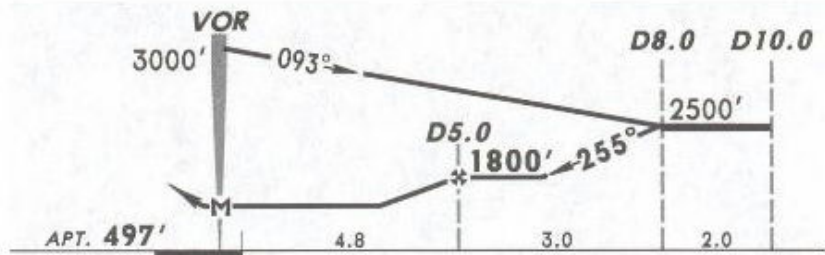
\*POZA RICA Tower 118.9

26 JAN 07

VOR PAZ <b>115.5</b>	Final Apch Crs <b>255°</b>	Minimum Alt D5.0 <b>1800'</b> (1303')	MDA(H) <b>980'</b> (483')	Apt Elev <b>497'</b>
----------------------------	----------------------------------	---	------------------------------	----------------------



MSA PAZ VOR



**MISSED APCH:** Climb outbound on PAZ VOR R-265 to D7.0, turn RIGHT within 10 NM to PAZ VOR to the minimum holding altitude.

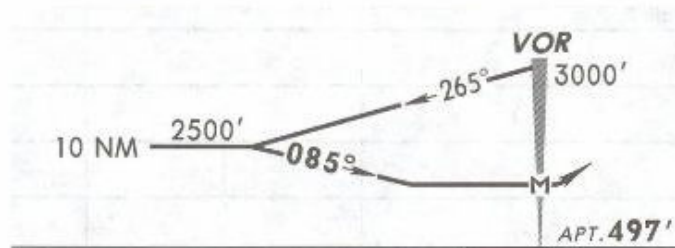
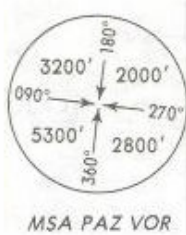
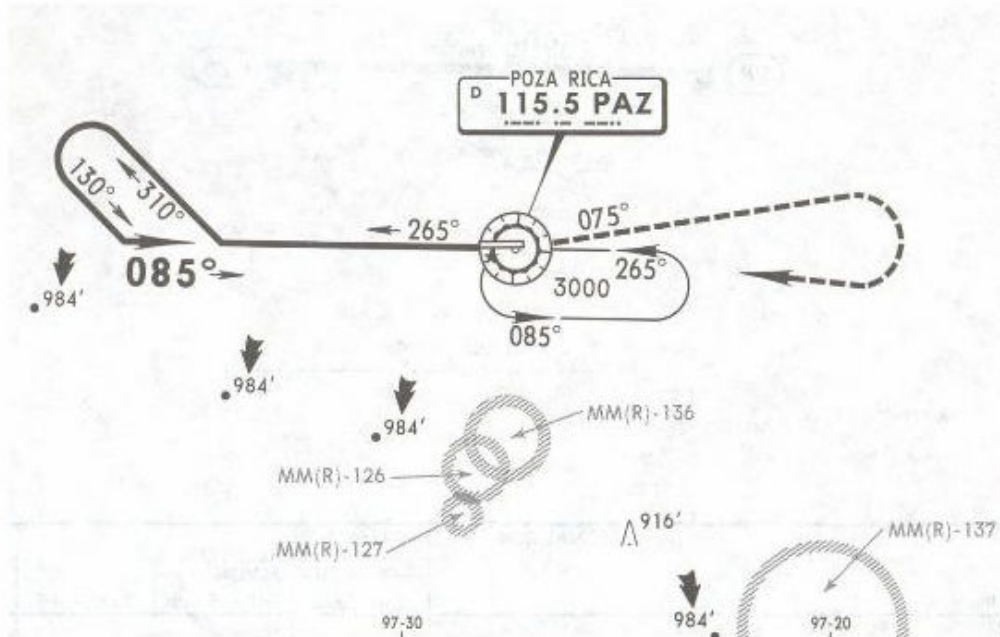
Alt Set: MB (IN on req) Apt Elev: 18 MB Trans level: FL 195 Trans alt: 18500'  
1. CAUTION: Do not use radio altimeter as reference to determine altitude over the airport due to orographic conditions.

NOT TO BE USED FOR ACTUAL NAVIGATION

\*POZA RICA Tower 118.9

22 FEB 08

VOR PAZ <b>115.5</b>	Final Apch Crs <b>085°</b>	No FAF	MDA(H) <b>1360' (863')</b>	Apt Elev <b>497'</b>
----------------------------	----------------------------------	--------	-------------------------------	----------------------



**MISSED APCH:** Climb outbound on PAZ VOR R-075, then turn RIGHT within 10 NM to PAZ VOR to the minimum holding altitude.

MAX TIME TO TURN							
Gnd Speed-Kts	80	100	120	140	160	180	200
7 NM to turn	5:15	4:12	3:30	3:00	2:38	2:20	2:06

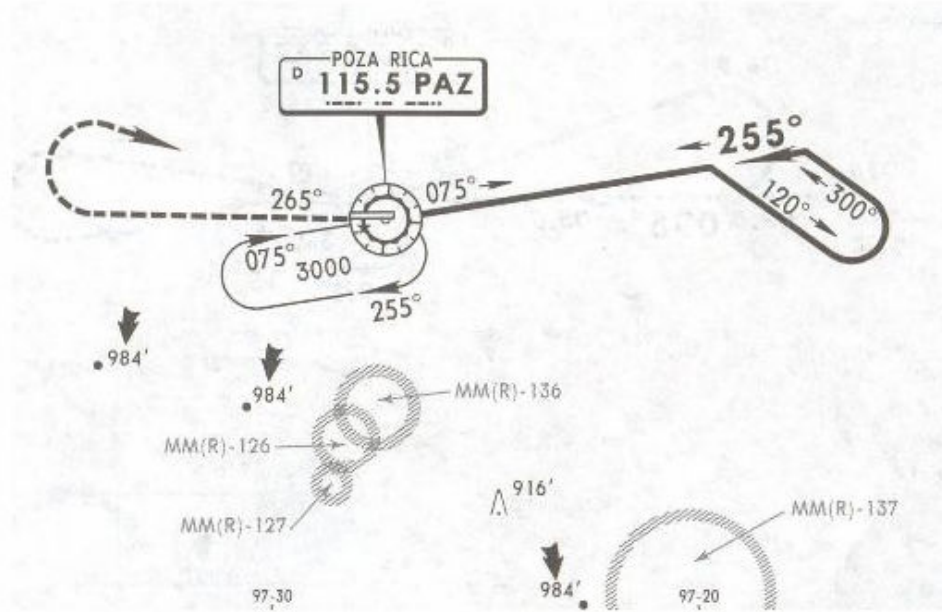
Alt Set: MB (IN on req) Apt Elev: 18 MB Trans level: FL 195 Trans alt: 18500'  
1. CAUTION: Do not use radio altimeter as reference to determine altitude over the airport due to orographic conditions.

**NOT TO BE USED FOR ACTUAL NAVIGATION**

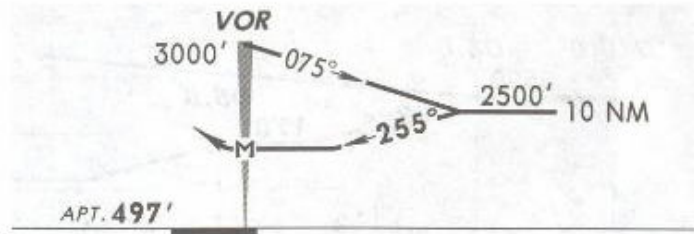
#POZA RICA Tower 118.9

22 FEB 08

VOR PAZ <b>115.5</b>	Final Apch Crs <b>255°</b>	No FAF	MDA(H) <b>1300'</b> (803')	Apt Elev <b>497'</b>
----------------------------	----------------------------------	--------	-------------------------------	----------------------



MSA PAZ VOR



**MISSED APCH:** Climb outbound on PAZ VOR R-265, then turn RIGHT within 10 NM to PAZ VOR to the minimum holding altitude.

MAX TIME TO TURN							
Gnd Speed-Kts	80	100	120	140	160	180	200
7 NM to turn	5:15	4:12	3:30	3:00	2:38	2:20	2:06

Alt Set: MB (IN on req) Apt Elev: 18 MB Trans level: FL 195 Trans alt: 18500'  
1. CAUTION: Do not use radio altimeter as reference to determine altitude over the airport due to orographic conditions.

**NOT TO BE USED FOR ACTUAL NAVIGATION**