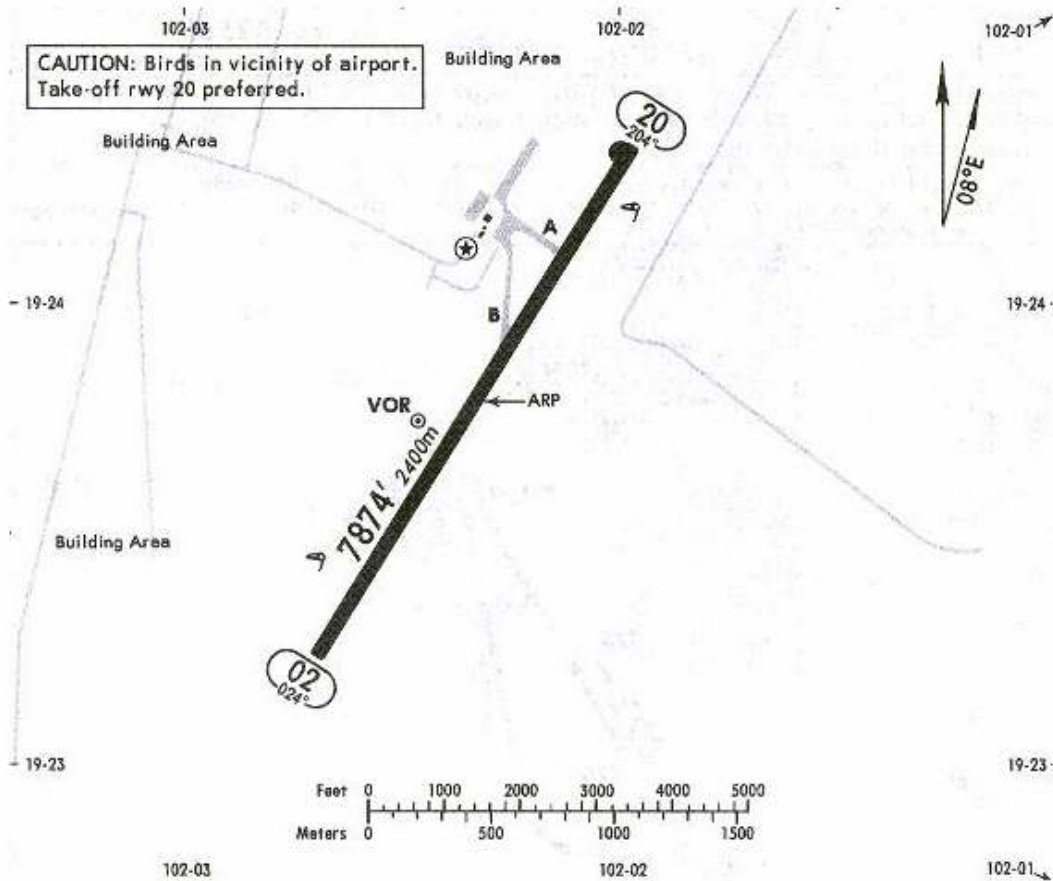


Apt Elev **5258'**  
N19 23.8 W102 02.3

\*URUAPAN Tower **118.2**

5 NOV 04



	TAKE-OFF & DEPARTURE PROCEDURE			FOR FILING AS ALTERNATE	
	Rwy 20	Rwy 02		DAY	NIGHT
		DAY	NIGHT		
1 & 2 Eng	500-1	VFR	NOT APPLICABLE	A	NOT APPLICABLE
3 & 4 Eng				B	
				C	
				D	

DEPARTURE PROCEDURE: Rwy 20, see 10-3 chart (CLIMB VOR DME UPN RWY 20). Rwy 02, VFR.  
Departure MCAs: V-17 & UJ-65 to MLM 11000'; V-18 & UJ-18 to TLC 11000'; V-3 to ZIH 10000';

V-18 & UJ-18 to ZLO 13500'; V-3 & UJ-3-7 to GDL 12500'; UJ-3-7 to ACA 10000'.

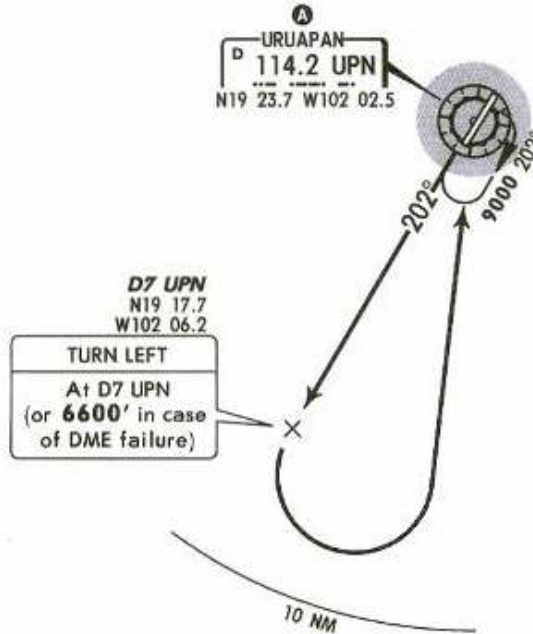
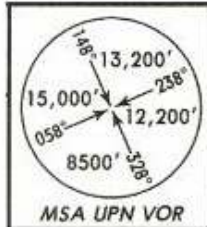
**NOT TO BE USED FOR ACTUAL NAVIGATION**

Apt Elev  
5258'

Trans level: FL 195 Trans alt: 18500'

6 MAY 05

DEPARTURE RWY 20  
URUAPAN TWO (UPN2)



A MINIMUM CROSSING ALTITUDE			
MLM	V-17	UJ-65	11200
PTJ	V-34		10200
TLC	V-18	UJ-18	11000
ACA		UJ-3	8000
ZIH	V-3	UJ-7	10000
COL	V-18	UJ-18	13200
GDL	V-3	UJ-3-7	12500

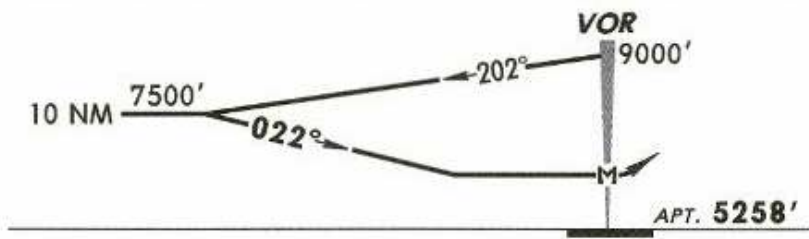
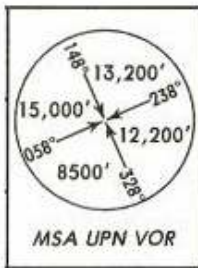
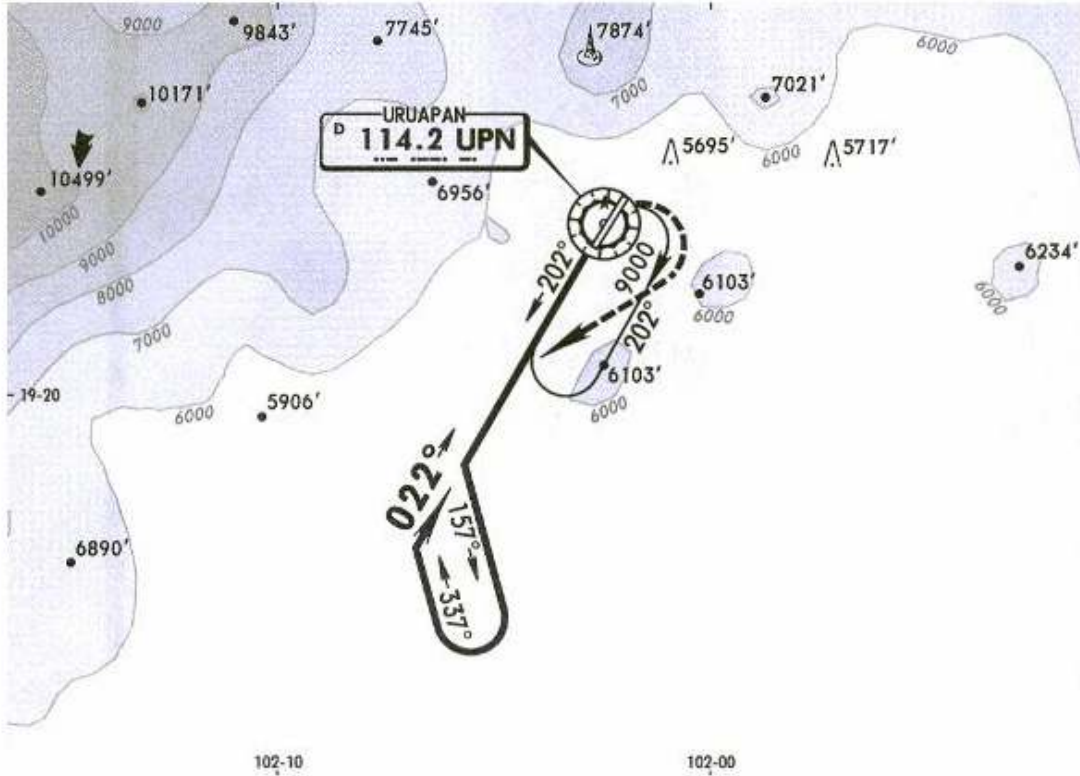
ROUTING

Climb on UPN R-202 to D7 UPN (to 6600' in case of DME failure), then make a LEFT teardrop turn within 10 NM to UPN. Depart UPN at the MCA A for the assigned route or according to ATC instructions.

\*URUAPAN Tower 118.2

16 JAN 04

VOR UPN <b>114.2</b>	Final Apch Crs <b>022°</b>	No FAF	MDA(H) Refer to Minimums	Apt Elev <b>5258'</b>
----------------------------	----------------------------------	--------	--------------------------------	-----------------------



MAP at VOR							Lighting - Refer to Airport Chart	RT intercept to UPN 114.2 R-202
------------	--	--	--	--	--	--	--	---

**MISSED APCH:** Climbing RIGHT turn and intercept UPN VOR R-202 then proceed on approach track to UPN VOR to the minimum holding altitude.

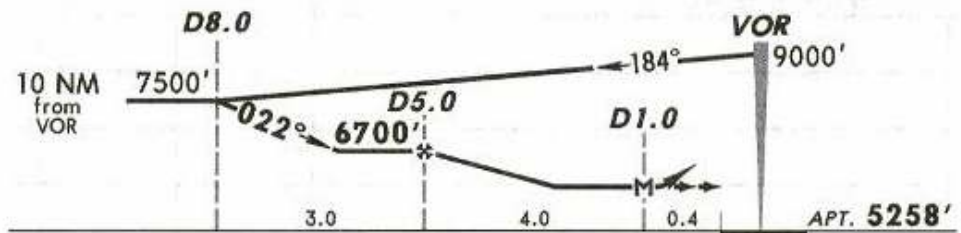
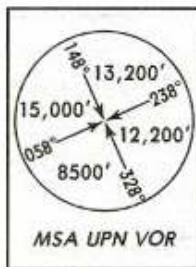
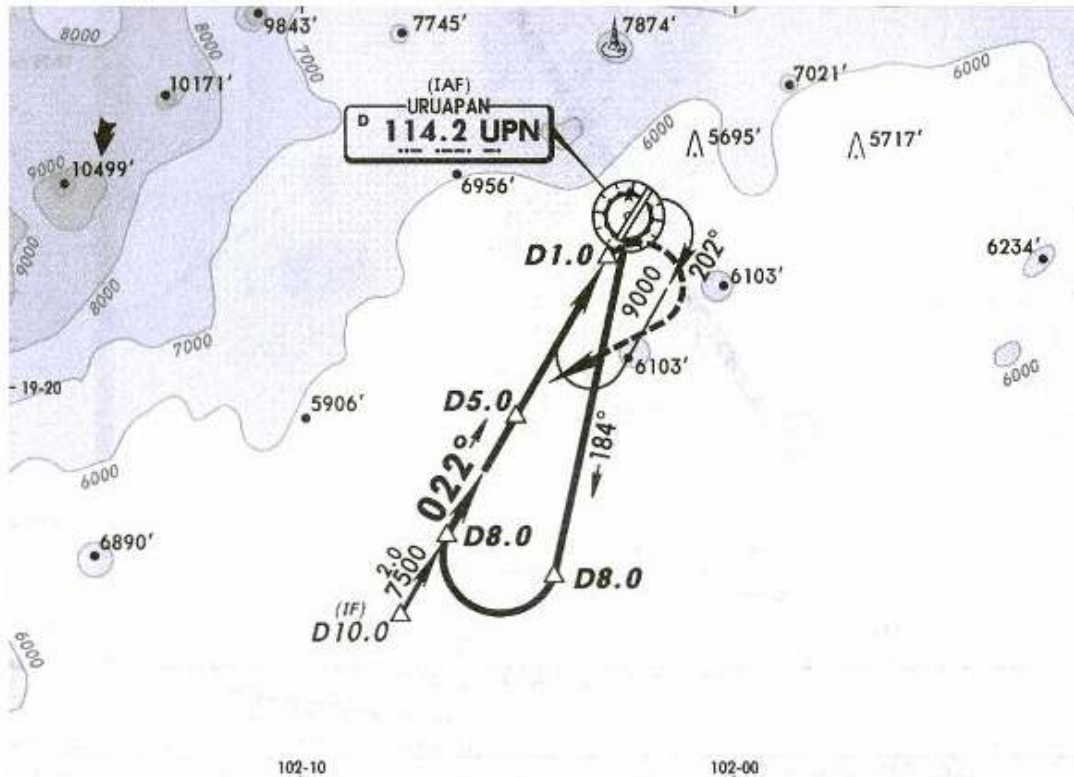
Alt Set: MB (IN on req) Apt Elev: 178 MB Trans level: FL 195 Trans alt: 18500'  
1. CAUTION: Do not use radio altimeter as reference to determine altitude over airport due to orographic conditions.

NOT TO BE USED FOR ACTUAL NAVIGATION

\*URUAPAN Tower 118.2

5 NOV 04

VOR UPN 114.2	Final Apch Crs 022°	Minimum Alt D5.0 6700' (1442')	MDA(H) 6180' (922')	Apt Elev 5258'
---------------------	---------------------------	--------------------------------------	------------------------	----------------



MAP at D1.0				PAPI-L	RT intercept to UPN 114.2 R-202
-------------	--	--	--	--------	---------------------------------

**MISSED APCH:** Climbing RIGHT turn to intercept UPN VOR R-202 and proceed inversely on the approach track to UPN VOR to the minimum holding altitude.

Alt Set: MB (IN on req) Apt Elev: 178 MB Trans level: FL 195 Trans alt: 18500'  
1. CAUTION: Do not use radio altimeter as reference to determine altitude over airport due to orographic conditions.

NOT TO BE USED FOR ACTUAL NAVIGATION