

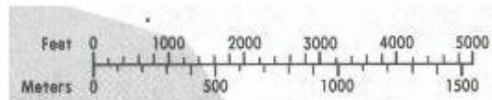
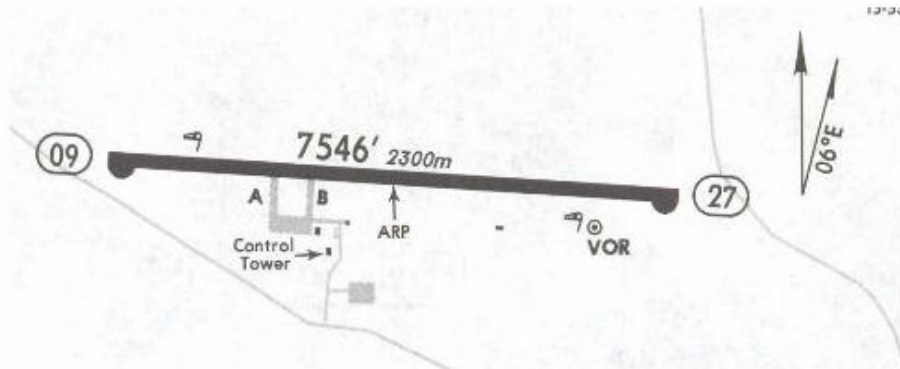
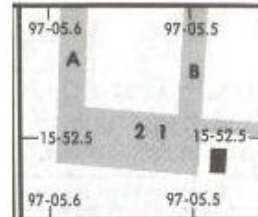
Apt Elev **294'**
N15 52.6 W097 05.3

22 OCT 04

Eff 28 Oct

CAUTION: Birds in vicinity of airport.

PARKING SPOT COORDINATES
SPOT NO. COORDINATES
1, 2 N15 52.5 W097 05.5



RWY	ADDITIONAL RUNWAY INFORMATION	USABLE LENGTHS		TAKE-OFF	WIDTH
		LANDING BEYOND Threshold	Glide Slope		
09 27	HIRL PAPI-L (angle 3.0°)				148' 45m

NOT TO BE USED FOR ACTUAL NAVIGATION

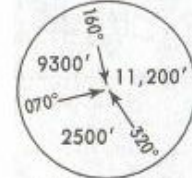
Apt Elev
294'

Trans level: FL 195 Trans alt: 18500'

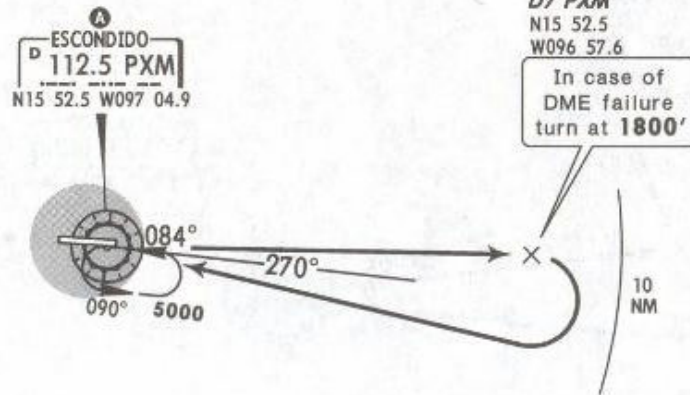
22 OCT 04

Eff 28 Oct

DEPARTURE RWY 09
ESCONDIDO TWO ALFA (PXM2A)



MSA PXM VOR



A MINIMUM CROSSING ALTITUDE			
OAX	V-29	UJ-69	8800
HUX	V-1	J-1, UJ-9	4100
ACA	V-1	J-1, UJ-9	2900
TEQ		UJ-71	8000

This SID requires a minimum climb gradient of 220' per NM to 5000'.

Gnd speed-KT	75	100	150	200	250	300
220' per NM	275	367	550	733	917	1100

Climb outbound on PXM R-084 to D7 PXM (in case of DME failure to 1800'), then a teardrop turn to the RIGHT within 10 NM to PXM. Cross PXM at the MCA A of the assigned route or in accordance with ATC instructions.

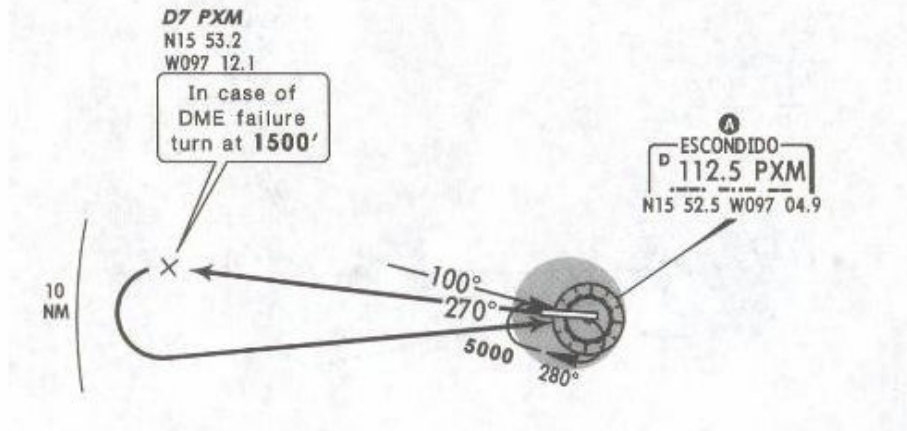
NOT TO BE USED FOR ACTUAL NAVIGATION

Apt Elev
294'

Trans level: FL 195 Trans alt: 18500'



DEPARTURE RWY 27
ESCONDIDO TWO BRAVO (PXM2B)



A MINIMUM CROSSING ALTITUDE			
OAX	V-29	UJ-69	8800
HUX	V-1	J-1, UJ-9	4100
ACA	V-1	J-1, UJ-9	2900
TEQ		UJ-71	8000

ROUTING

Climb outbound on PXM R-270 to D7 PXM (in case of DME failure to 1500'), then a teardrop turn to the LEFT within 10 NM to PXM. Cross PXM at the MCA A of the assigned route or in accordance with ATC instructions.

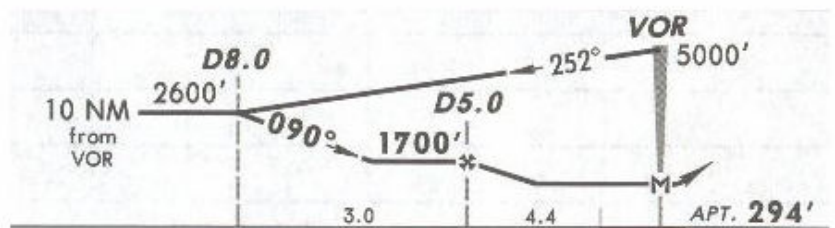
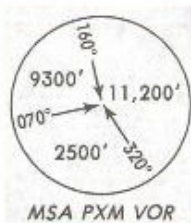
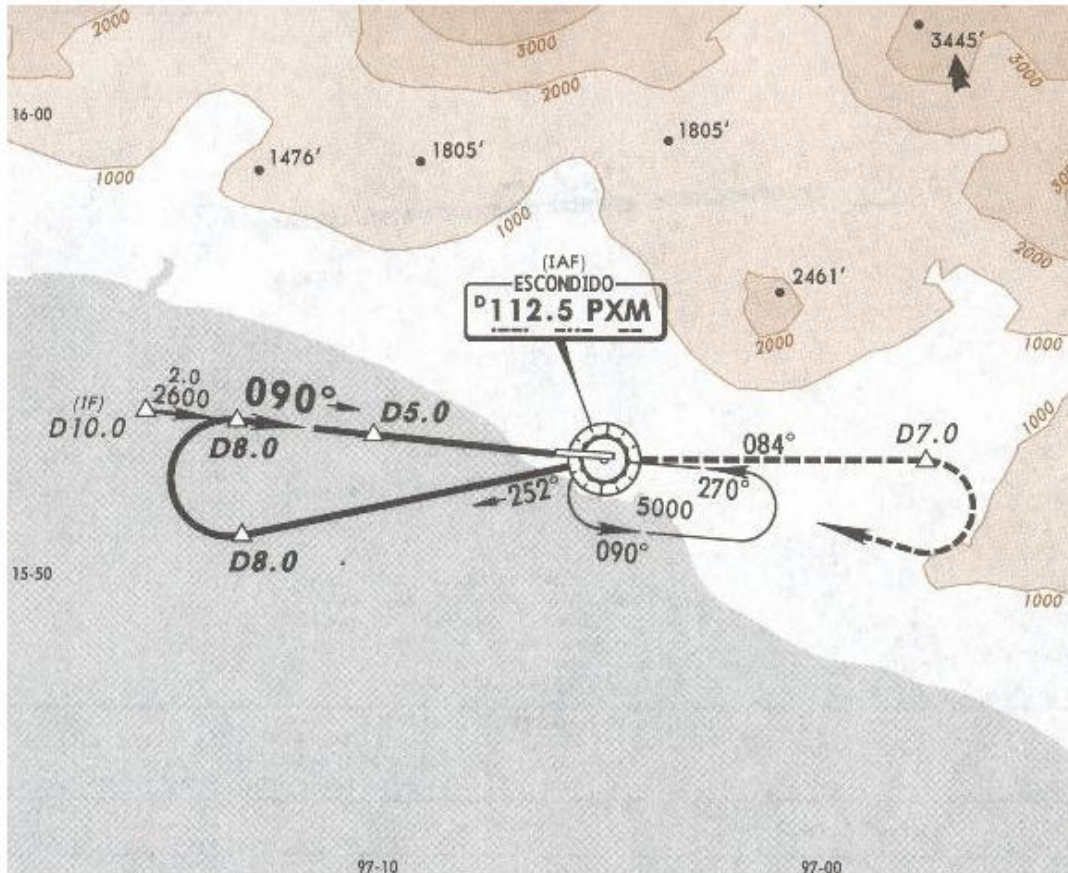
NOT TO BE USED FOR ACTUAL NAVIGATION

* ESCONDIDO Tower 118.9

Eff 28 Oct

22 OCT 04

VOR PXM 112.5	Final Apch Crs 090°	Minimum Alt D5.0 1700' (1406')	MDA(H) 860' (566')	Apt Elev 294'
----------------------------	----------------------------------	---	------------------------------	----------------------

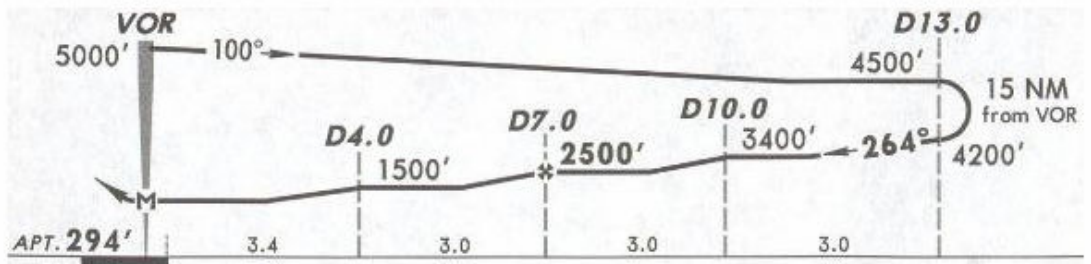
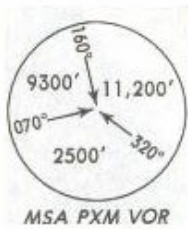
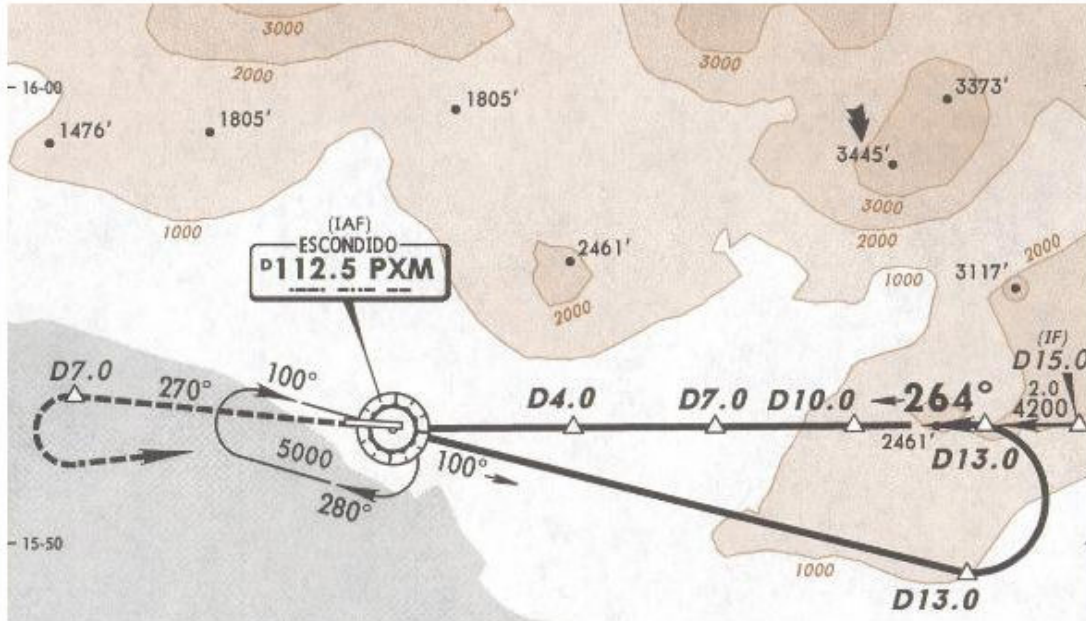


MISSED APCH: Climb outbound on PXM VOR R-084 to D7.0 with a teardrop turn to the RIGHT within 10 NM to PXM VOR to the minimum holding altitude.

Alt Set: MB (IN on req) Apt Elev: 11 MB Trans level: FL 195 Trans alt: 18500'

NOT TO BE USED FOR ACTUAL NAVIGATION

VOR PXM 112.5	Final Apch Crs 264°	Minimum Alt D7.0 2500' (2206')	MDA(H) 840' (546')	Apt Elev 294'
----------------------------	----------------------------------	---	------------------------------	----------------------



MISSED APCH: Climb outbound on PXM VOR R-270 to D7.0 then with a teardrop turn to the LEFT within 10 NM to PXM VOR to the minimum holding altitude.

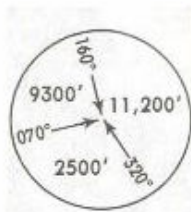
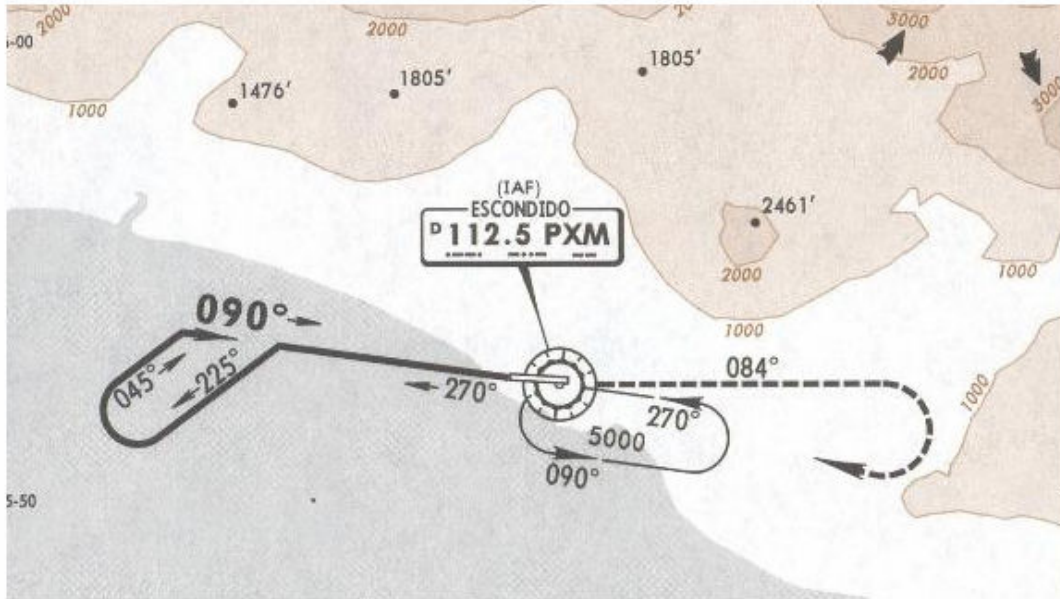
Alt Set: MB (IN on req) Apt Elev: 11 MB Trans level: FL 195 Trans alt: 18500'

22 OCT 04

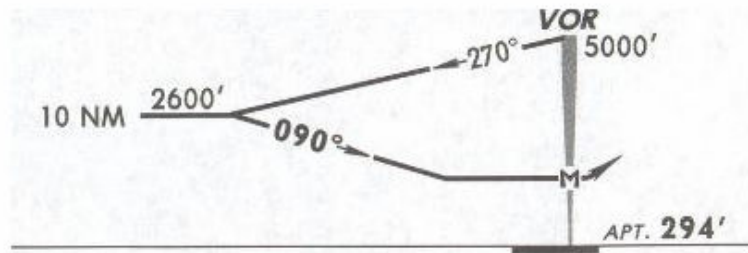
* ESCONDIDO Tower 118.9

Eff 28 Oct

VOR PXM 112.5	Final Apch Crs 090°	No FAF	MDA(H) 900' (606')	Apt Elev 294'
----------------------------	----------------------------------	--------	------------------------------	----------------------



MSA PXM VOR



MISSED APCH: Climb outbound on PXM VOR R-084 with a teardrop turn to the RIGHT within 10 NM to PXM VOR to the minimum holding altitude.

MAX OUTBOUND LEG DISTANCE 7 NM							
Gnd Speed-Kts	80	100	120	140	160	180	200
Time	5:15	4:12	3:30	3:00	2:38	2:20	2:06

Alt Set: MB (IN on req) Apt Elev: 11 MB Trans level: FL 195 Trans alt: 18500'

NOT TO BE USED FOR ACTUAL NAVIGATION