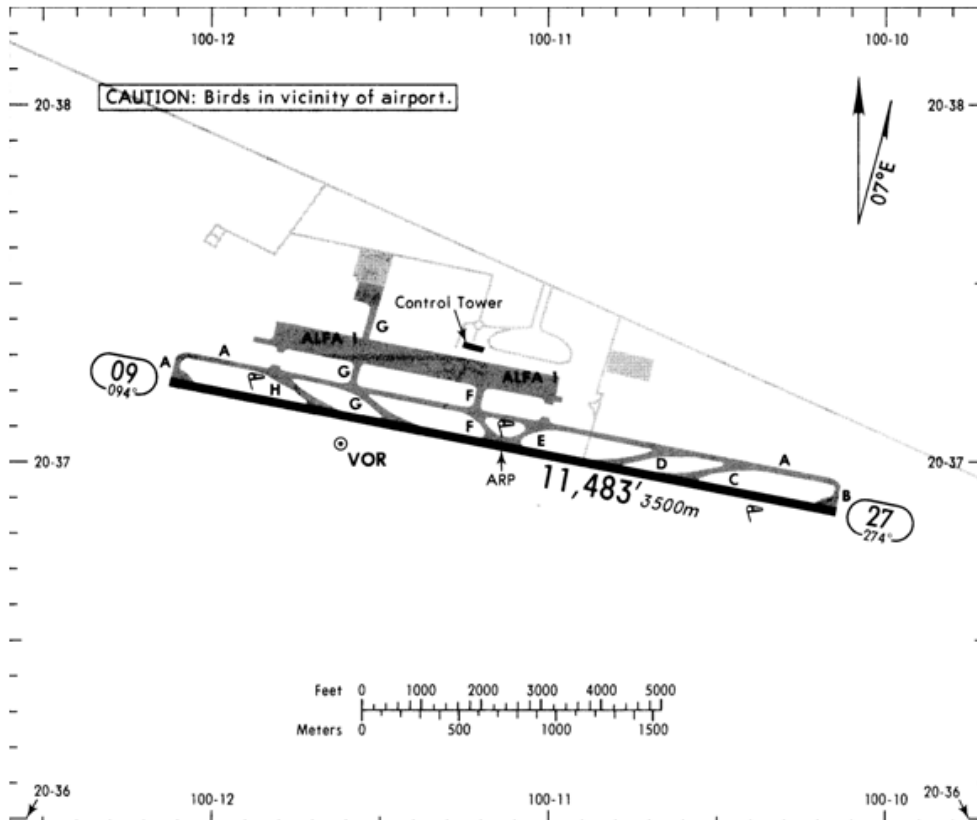


Apt Elev **6296'**
N20 37.0 W100 11.1

QUERETARO INTL Tower 118.95

30 APR 10
Eff 6 May



RWY	ADDITIONAL RUNWAY INFORMATION	USABLE LENGTHS			WIDTH
		Threshold	Landing Beyond	Glide Slope	
09 27	HIRL REIL PAPI-L (angle 3.0°)			TAKE-OFF	148' 45m

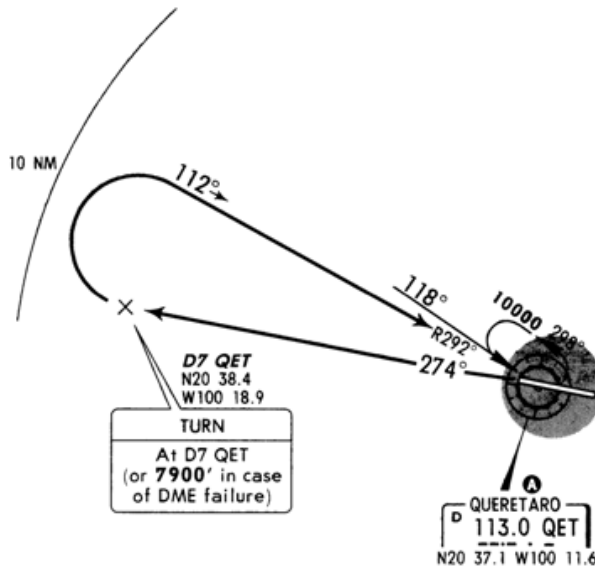
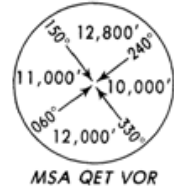
NOT TO BE USED FOR ACTUAL NAVIGATION

Apt Elev
6296'

Trans level: FL195 Trans alt: 18500'

30 APR 10
Eff 6 May

DEPARTURE RUNWAY 27
QUERETARO TWO BRAVO (QET2B)



This SID requires a minimum climb gradient of 240' per NM to 10000'.

Gnd speed-KT	75	100	150	200	250	300
240' per NM	300	400	600	800	1000	1200

MINIMUM CROSSING ALTITUDE			
CVM		UJ-17	9500
TMN	V-17	UJ-14	7500
SLM	V-14-22	UJ-5-33	7500
PTJ	V-43	UJ-45	8000
ANEVU	V-27		8100
MLM	V-17	UJ-17	8000
GDL	V-14	UJ-14	7100
BJX	V-22		6500
AGU	V-27	UJ-33	7700
ZCL		UJ-5	7800
SLP	V-43	UJ-45	8200



INITIAL CLIMB

Climb on QET R-274 to D7 QET (or 7900' in case of DME failure), then turn RIGHT within 10 NM and intercept QET R-292 to QET and depart at the MCA **A** for the assigned route or according to ATC instructions.

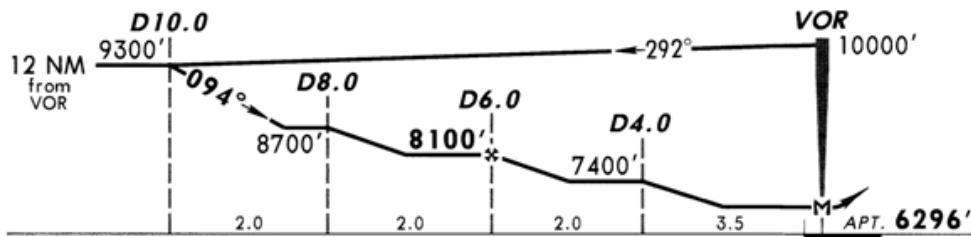
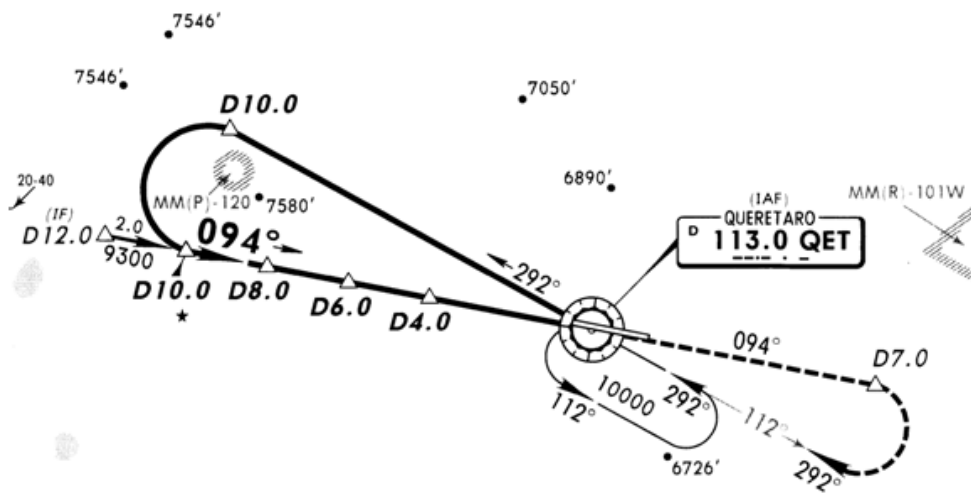
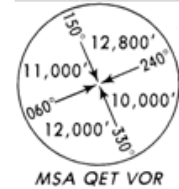
NOT TO BE USED FOR ACTUAL NAVIGATION

QUERETARO INTL Tower 118.95

30 APR 10

Eff 6 May

VOR QET 113.0	Final Apch Crs 094°	Minimum Alt D6.0 8100' (1804')	MDA(H) 6820' (524')	Apt Elev 6296'
----------------------------	----------------------------------	---	-------------------------------	-----------------------



MISSED APCH: Climb outbound on QET VOR R-094 to D7.0, turn RIGHT within 10 NM and intercept QET VOR R-112 inbound to QET VOR to the minimum holding altitude.

Alt Set: MB (IN on req) Apt Elev: 210 MB Trans level: FL 195 Trans alt: 18500'

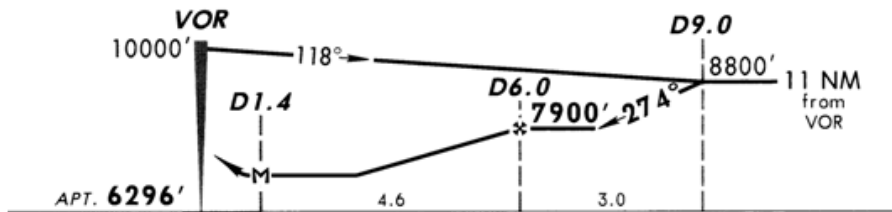
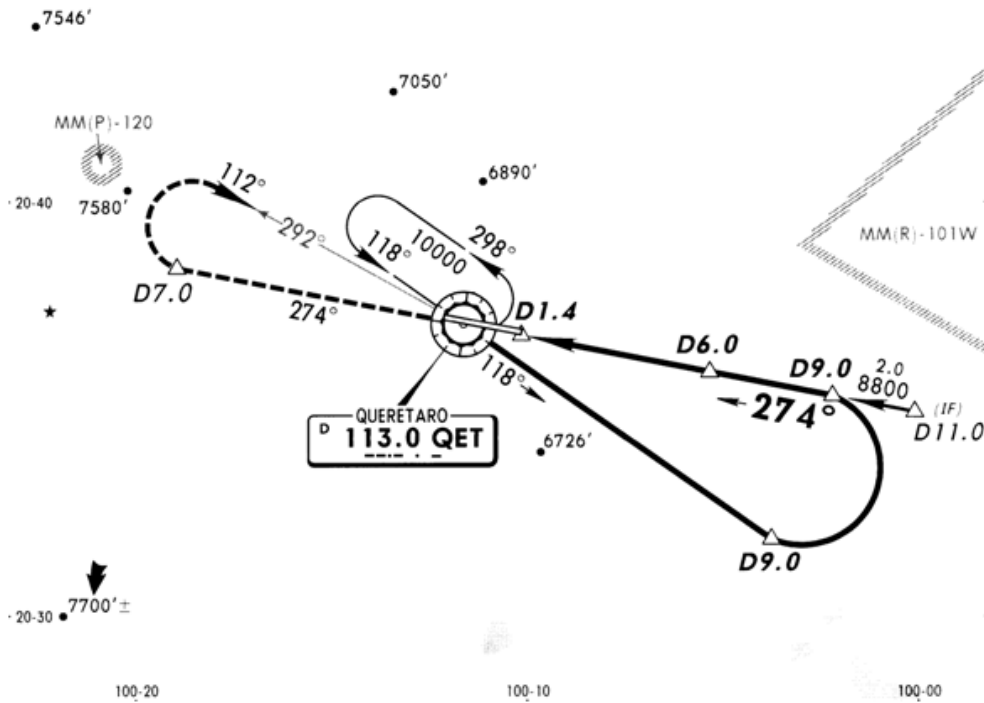
NOT TO BE USED FOR ACTUAL NAVIGATION

QUERETARO INTL Tower 118.95

30 APR 10

Eff 6 May

VOR QET 113.0	Final Apch Crs 274°	Minimum Alt D6.0 7900' (1604')	MDA(H) 6820' (524')	Apt Elev 6296'
----------------------------	----------------------------------	---	-------------------------------	-----------------------



MISSED APCH: Climb on QET VOR R-274 to D7.0, then turn RIGHT within 10 NM and intercept QET VOR R-292 inbound to QET VOR to the minimum holding altitude.

Alt Set: MB (IN on req) Apt Elev: 210 MB Trans level: FL 195 Trans alt: 18500'

NOT TO BE USED FOR ACTUAL NAVIGATION