

POTOSI Approach

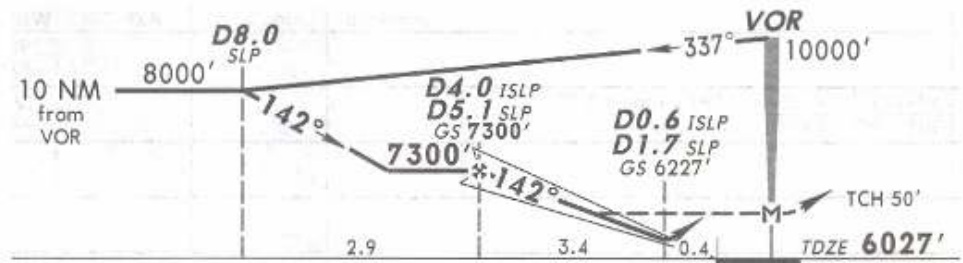
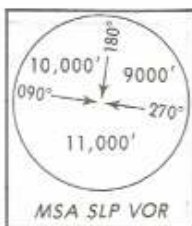
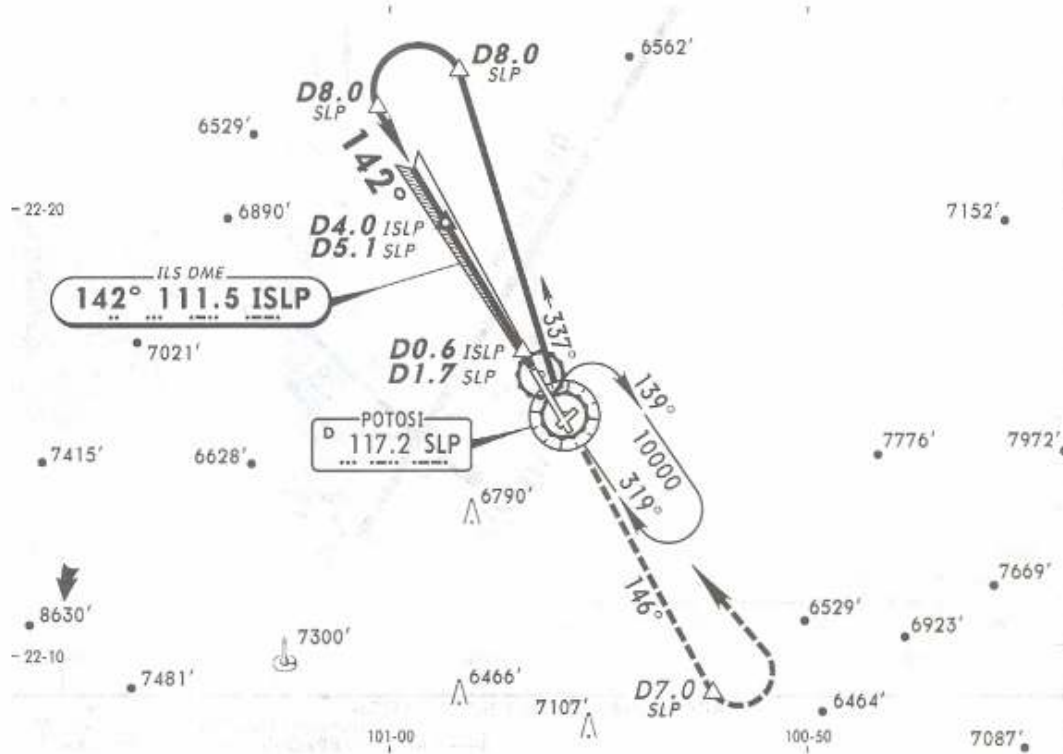
POTOSI Tower

28 DEC 07

118.9

118.9

LOC ISLP 111.5	Final Apch Crs 142°	GS D4.0 ISLP D5.1 SLP 7300' (1273')	ILS DA(H) (CONDITIONAL) 6227' (200')	Apt Elev 6035' TDZE 6027'
-----------------------------	----------------------------------	---	--	-------------------------------------



MISSED APCH: Climb outbound on SLP VOR R-146 to D7.0 SLP, turn LEFT within 10 NM to SLP VOR to the minimum holding altitude.

Alt Set: MB (IN on req) TDZ Elev: 202 MB Trans level: FL 195 Trans alt: 18500'

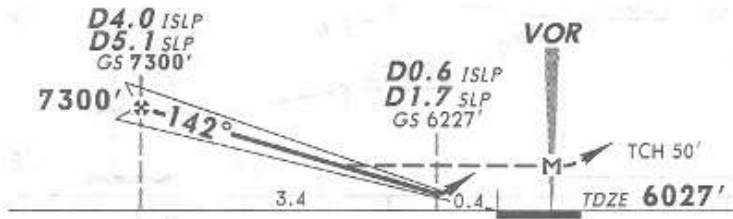
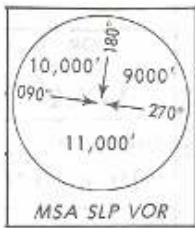
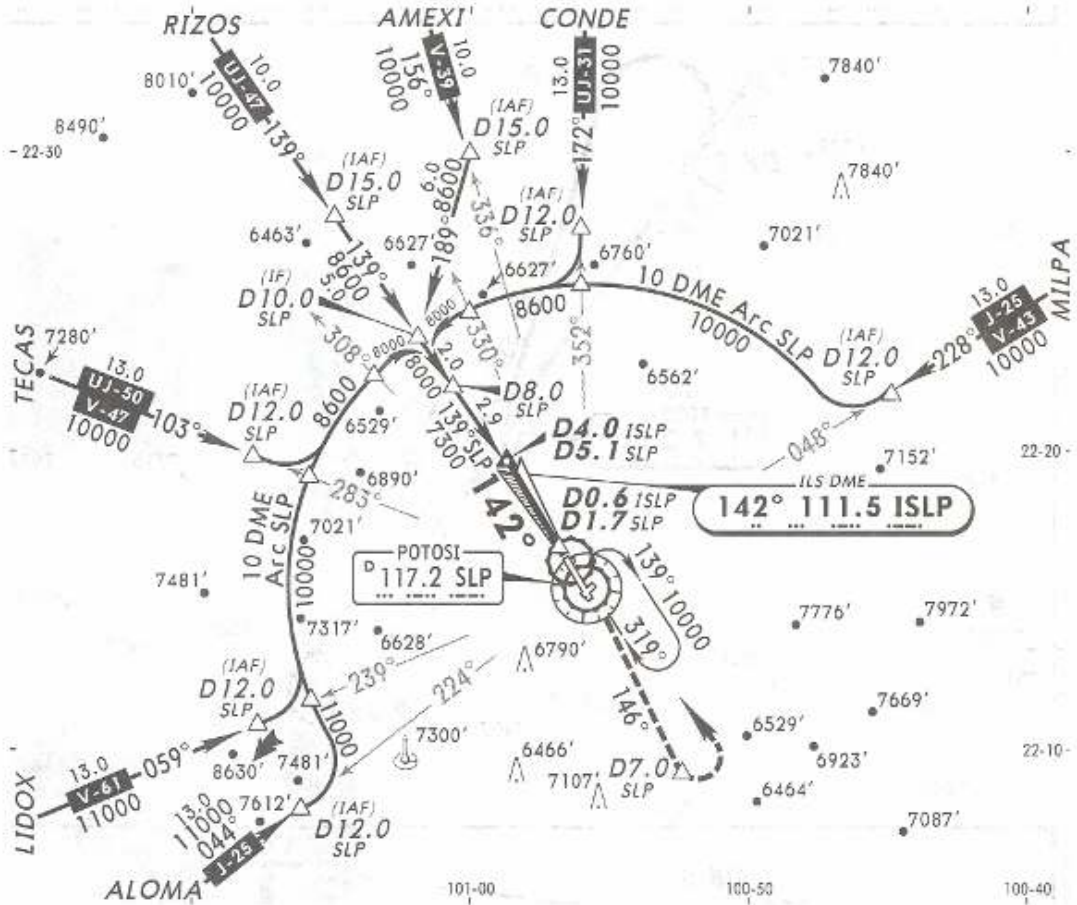
NOT TO BE USED FOR ACTUAL NAVIGATION

POTOSI Approach
118.9

POTOSI Tower
118.9

28 DEC 07

LOC ISLP 111.5	Final Apch Crs 142°	GS D4.0 ISLP D5.1 SLP 7300' (1273')	ILS DA(H) (CONDITIONAL) 6227' (200')	Apt Elev 6035' TDZE 6027'
-----------------------------	----------------------------------	---	--	-------------------------------------

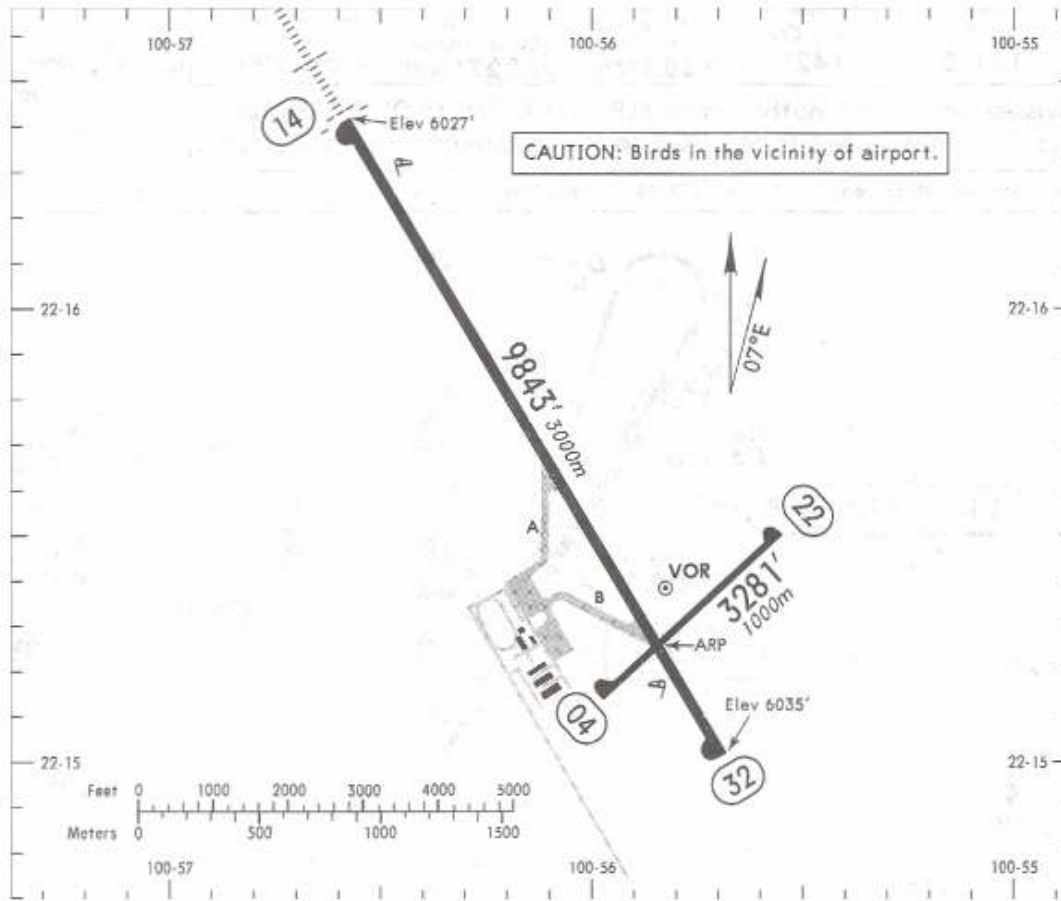


MISSED APCH: Climb outbound on SLP VOR R-146 to D7.0 SLP, turn LEFT within 10 NM to SLP VOR to the minimum holding altitude.
 Alt Set: MB (IN on req) TDZ Elev: 202 MB Trans level: FL 195 Trans alt: 18500'
 1. In case of DME failure at any point in this procedure maintain last altitude and proceed to the station with instructions from ATC.

NOT TO BE USED FOR ACTUAL NAVIGATION

Apt Elev **6035'**
N22 15.3 W100 55.8

POTOSI Tower **118.9**



ADDITIONAL RUNWAY INFORMATION					
RWY	USABLE LENGTHS				WIDTH
	LANDING BEYOND		TAKE-OFF		
	Threshold	Glide Slope			
04 22					98' 30m
14 32	HIRL (90')	ALSF-I	PAPI-L (angle 3.0°)		148' 45m
	HIRL (90')	PAPI-L (angle 3.0°)			

NOT TO BE USED FOR ACTUAL NAVIGATION

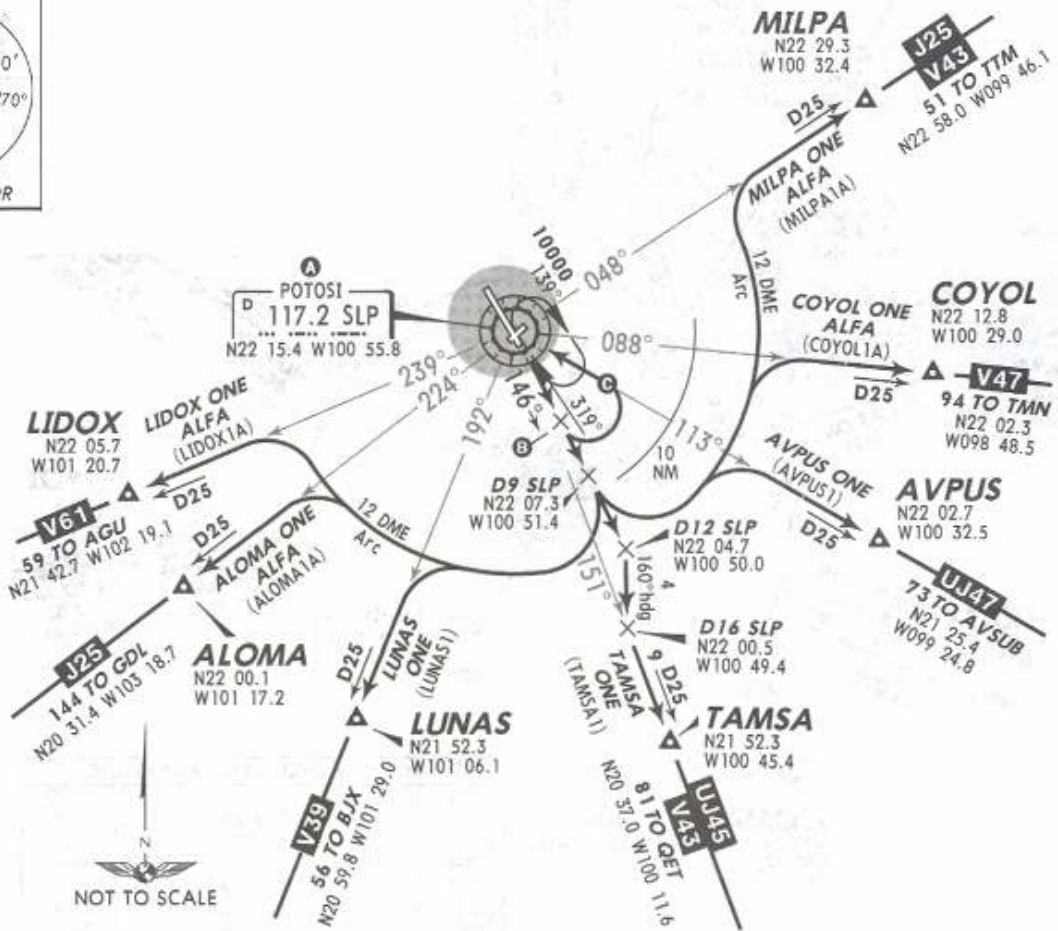
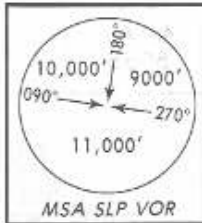
Apt Elev
6035'

Trans level: FL 195 Trans alt: 18500'

28 DEC 07

DEPARTURES RWY 14

ALOMA ONE ALFA (ALOMA1A), AVPUS ONE (AVPUS1),
COYOL ONE ALFA (COYOL1A), LIDOX ONE ALFA (LIDOX1A),
LUNAS ONE (LUNAS1), MILPA ONE ALFA (MILPA1A),
POTOSI TWO ALFA (SLP2A), TAMSA ONE (TAMSA1)



A MINIMUM CROSSING ALTITUDE			
MTY		UJ-45	7800
TTM	V-43	J-25	8900
TMN	V-47		8800
AVSUB		UJ-47	10000
SLW		UJ-31	7800
CDR	V-39		8400
TRC		UJ-47	8200
ZCL	V-47	UJ-50	8200
GDL		J-25	9400
BJX	V-39		10000
QET	V-43	UJ-45	10000
AGU	V-61		8100

B
D7 SLP
N22 09.1
W100 52.4

POTOSI
TWO ALFA

Turn at D7 SLP
(or 7400' in case
of DME failure)

C
POTOSI TWO ALFA
(SLP2A)

These SIDs require a minimum climb gradient of:
ALOMA ONE ALFA, LIDOX ONE ALFA, LUNAS ONE:
260' per NM to 11000'.

Gnd speed-KT	75	100	150	200	250	300
260' per NM	325	433	650	867	1083	1300

NOT TO BE USED FOR ACTUAL NAVIGATION

Api Elev
6035'

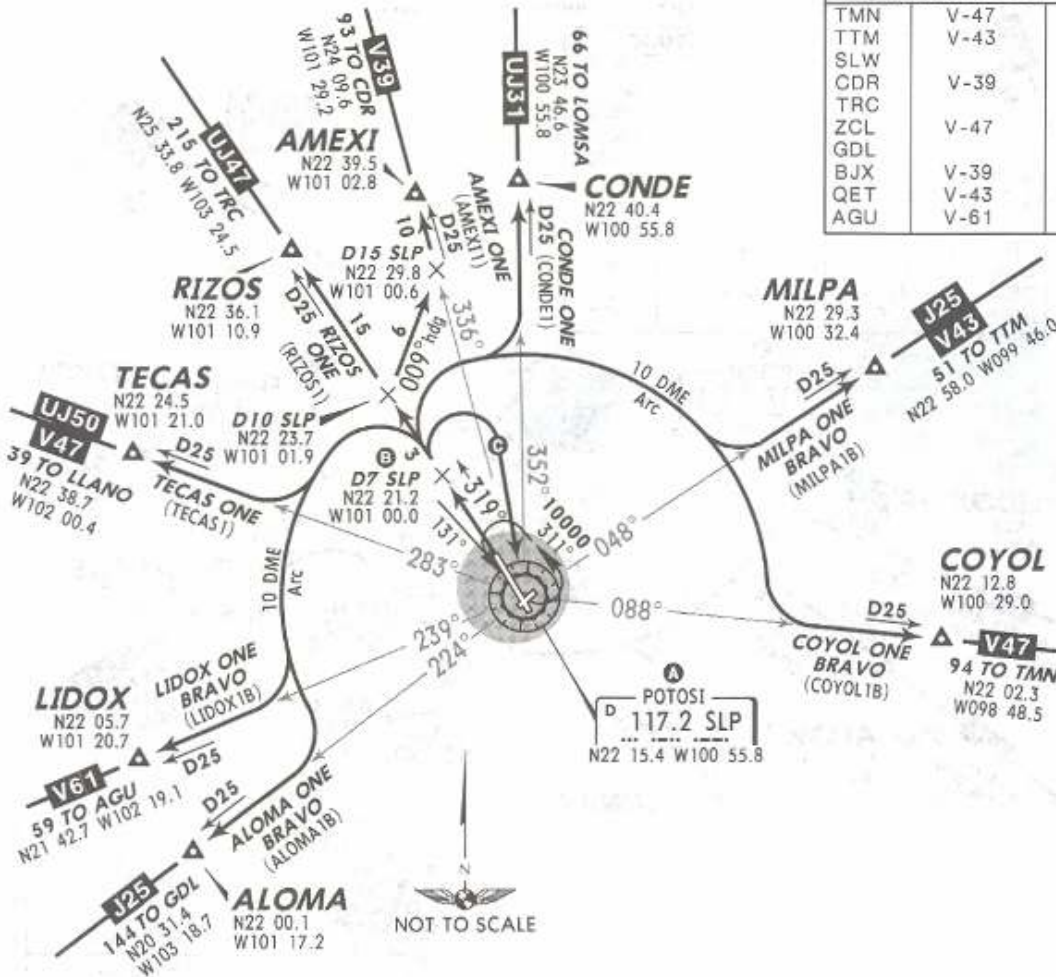
Trans level: FL 195 Trans alt: 18500'

28 DEC 07

DEPARTURES RWY 32

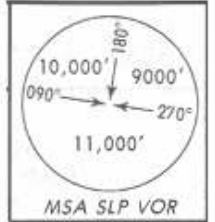
ALOMA ONE BRAVO (ALOMA1B), AMEXI ONE (AMEX11),
CONDE ONE (CONDE1), COYOL ONE BRAVO (COYOL1B),
LIDOX ONE BRAVO (LIDOX1B), MILPA ONE BRAVO (MILPA1B),
POTOSI TWO BRAVO (SLP2B), RIZOS ONE (RIZOS1), TECAS ONE (TECAS1)

MINIMUM CROSSING ALTITUDE			
TMN	V-47		8800
TTM	V-43	J-25	8900
SLW		UJ-31	7800
CDR	V-39		8400
TRC		UJ-47	8200
ZCL	V-47	UJ-50	8200
GDL		J-25	9400
BJX	V-39		10000
QET	V-43	UJ-45	10000
AGU	V-61		8100



B
POTOSI TWO BRAVO
Turn at D7 SLP
(or 7200' in case of DME failure)

C
POTOSI TWO BRAVO (SLP2B)

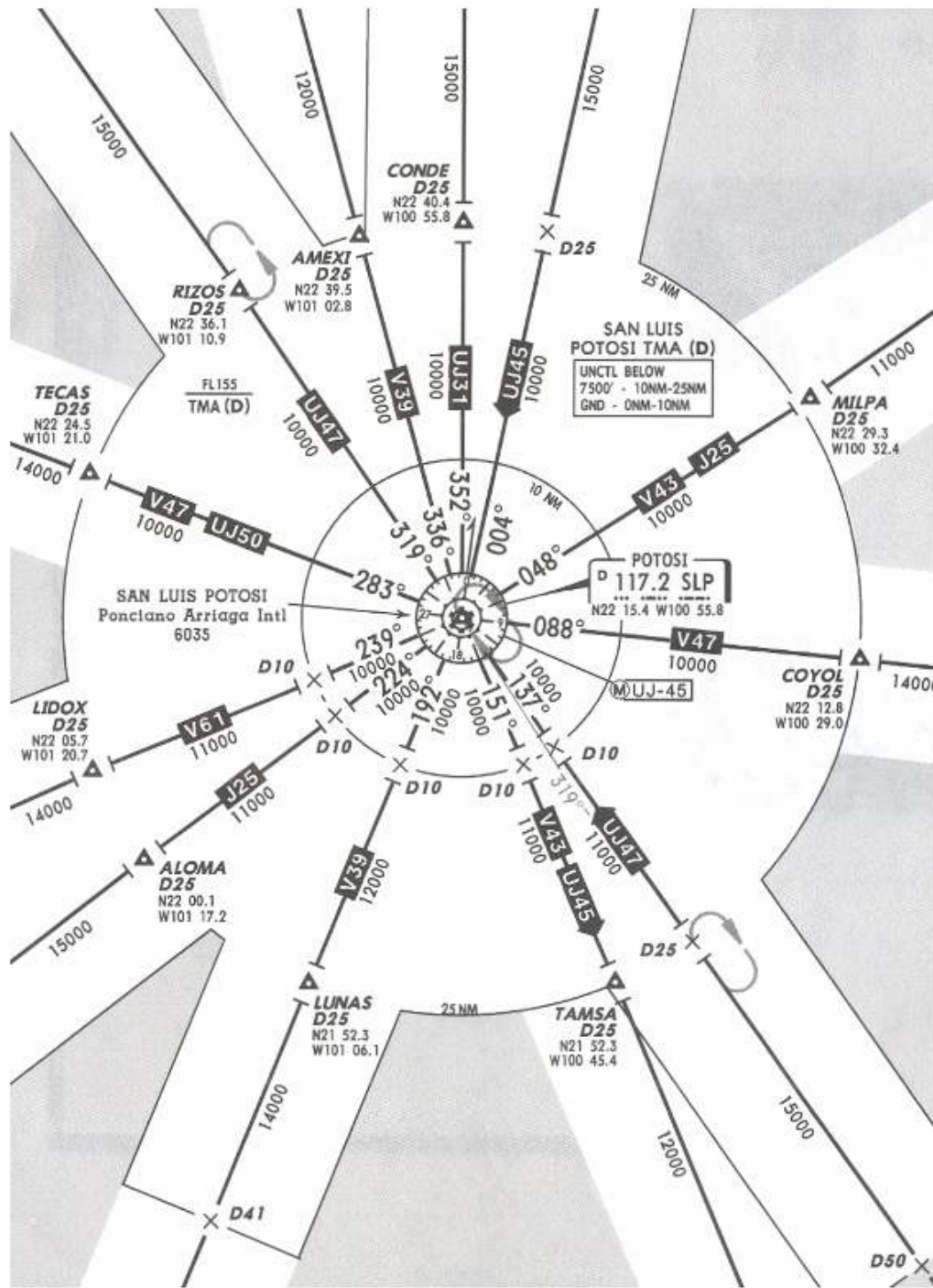


SID	INITIAL CLIMB
ALOMA ONE BRAVO LIDOX ONE BRAVO TECAS ONE	Climb on SLP R-319 to D7 SLP, turn LEFT to proceed on SLP 10 DME Arc until intercepting the corresponding radial from SLP to ALOMA, LIDOX or TECAS, then continue on assigned route or in accordance with ATC instructions.
AMEXI ONE	Climb on SLP R-319 to D10 SLP, turn RIGHT to heading 009° to intercept SLP R-336 to AMEXI, then continue on assigned route or in accordance with ATC instructions.
CONDE ONE COYOL ONE BRAVO MILPA ONE BRAVO	Climb on SLP R-319 to D7 SLP, turn RIGHT to proceed on SLP 10 DME Arc until intercepting the corresponding radial from SLP to CONDE, COYOL or MILPA, then continue on assigned route or in accordance with ATC instructions.
POTOSI TWO BRAVO	Climb on SLP R-319 to D7 SLP (to 7200' in case of DME failure), turn RIGHT within 10 NM to SLP. Depart SLP at the MCA A of the assigned route or in accordance with ATC instructions.
RIZOS ONE	Climb on SLP R-319 to RIZOS, then continue on assigned route or in accordance with ATC instructions.

NOT TO BE USED FOR ACTUAL NAVIGATION

*POTOSI Approach
118.9

1 DEC 06



SPEED RESTRICTIONS

MAXIMUM IAS UNLESS OTHERWISE DEPICTED OR AUTHORIZED BY ATC

WITHIN MEXICO AIRSPACE

- At or below 3000' AGL within 10 NM of any airport.....200 KTS
- At or below 10,000' MSL within Mexico Airspace.....250 KTS
- At or below 10,000' MSL within 30 NM of any airport.....250 KTS

WITHIN SAN LUIS POTOSI TMA

- At or below 10,000' MSL of Ponciano Arriaga Intl Apt and within 10 NM of SLP VORDME.....200 KTS
- At or below 10,000' MSL within 30 NM of SLP VORDME.....250 KTS

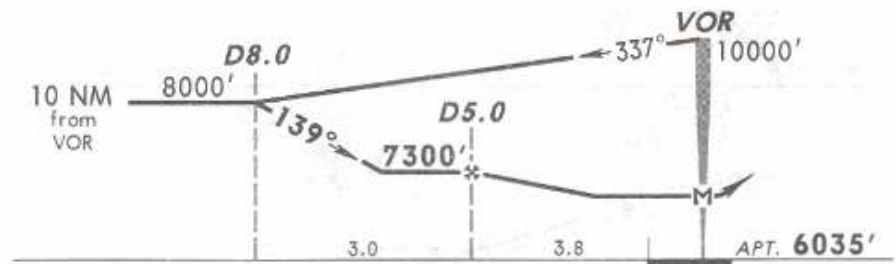
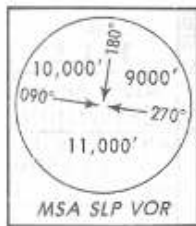
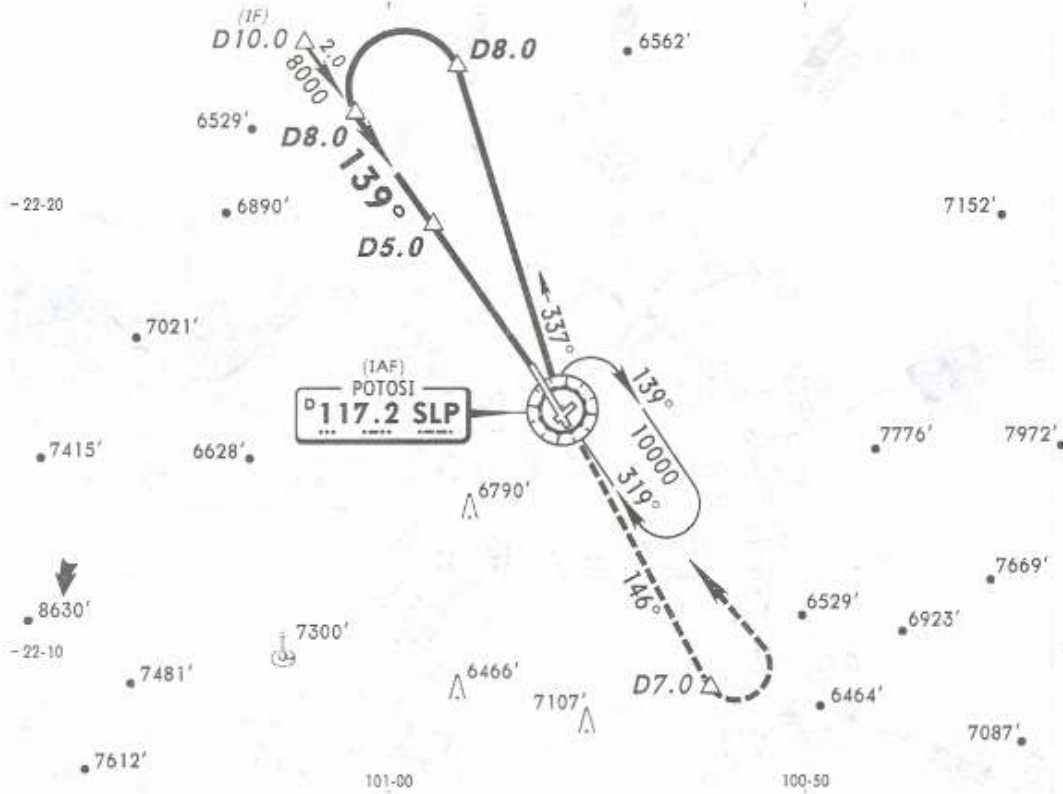
NOT TO BE USED FOR ACTUAL NAVIGATION

POTOSI Approach
118.9

POTOSI Tower
118.9

28 DEC 07

VOR SLP 117.2	Final Apch Crs 139°	Minimum Alt D5.0 7300' (1265')	MDA(H) 6560' (525')	Apt Elev 6035'
----------------------------	----------------------------------	---	-------------------------------	-----------------------



MISSED APCH: Climb outbound on SLP VOR R-146 to D7.0, turn LEFT within 10 NM to SLP VOR to the minimum holding altitude.

Alt Set: MB (IN on req) Apt Elev: 202 MB Trans level: FL 195 Trans alt: 18500'

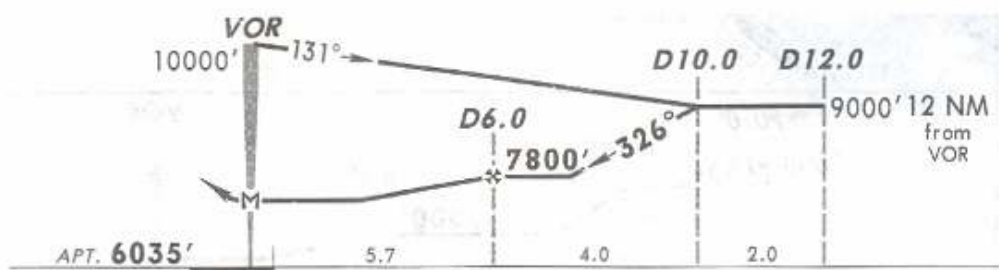
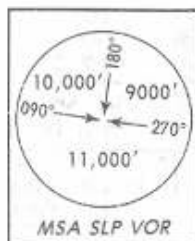
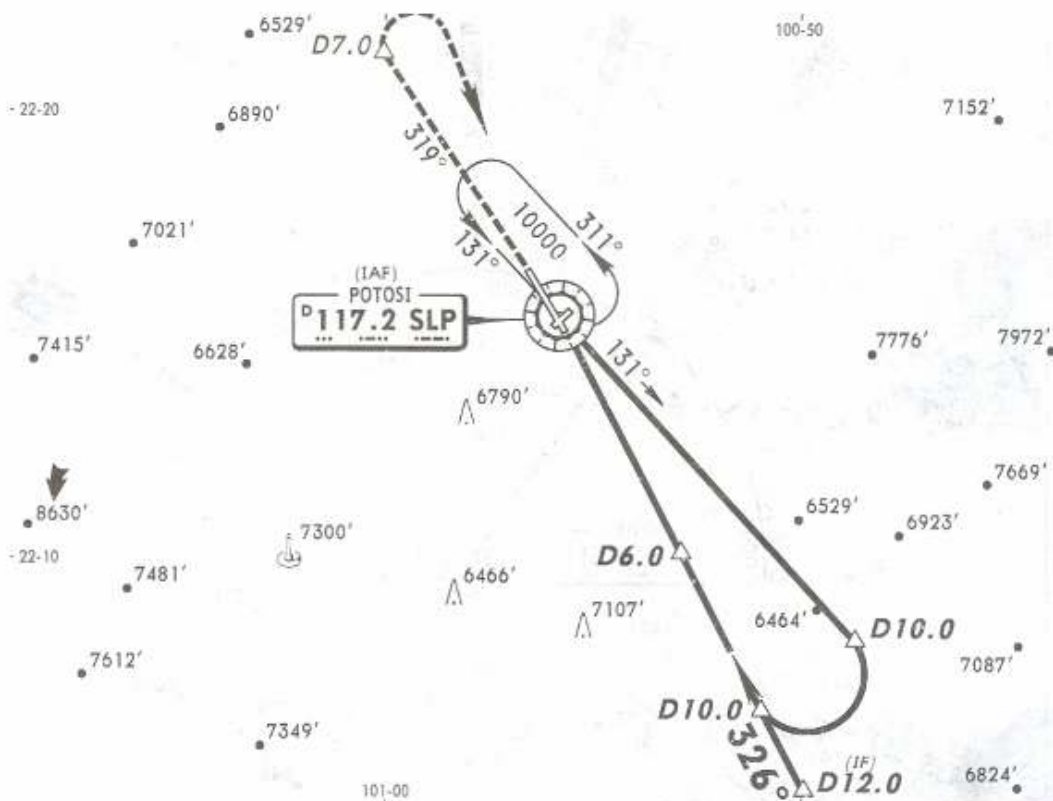
NOT TO BE USED FOR ACTUAL NAVIGATION

POTOSI Approach
118.9

POTOSI Tower
118.9

28 DEC 07

VOR SLP 117.2	Final Apch Crs 326°	Minimum Alt D6.0 7800' (1765')	MDA(H) 6560' (525')	Apt Elev 6035'
-------------------------	-------------------------------	--	-------------------------------	-----------------------



MISSED APCH: Climb outbound on SLP VOR R-319 to D7.0, turn RIGHT within 10 NM to SLP VOR to the minimum holding altitude.

Alt Set: MB (IN on req) Apt Elev: 202 MB Trans level: FL 195 Trans alt: 18500'

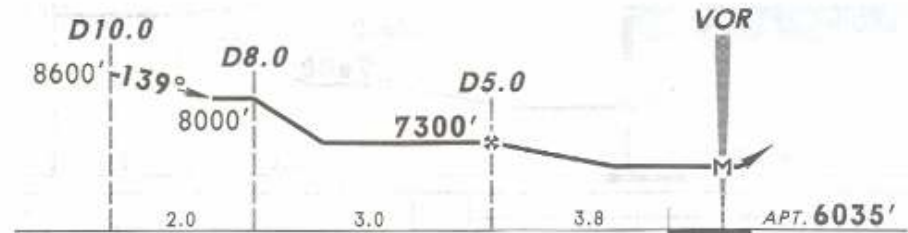
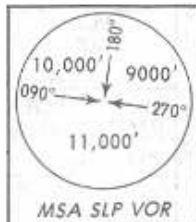
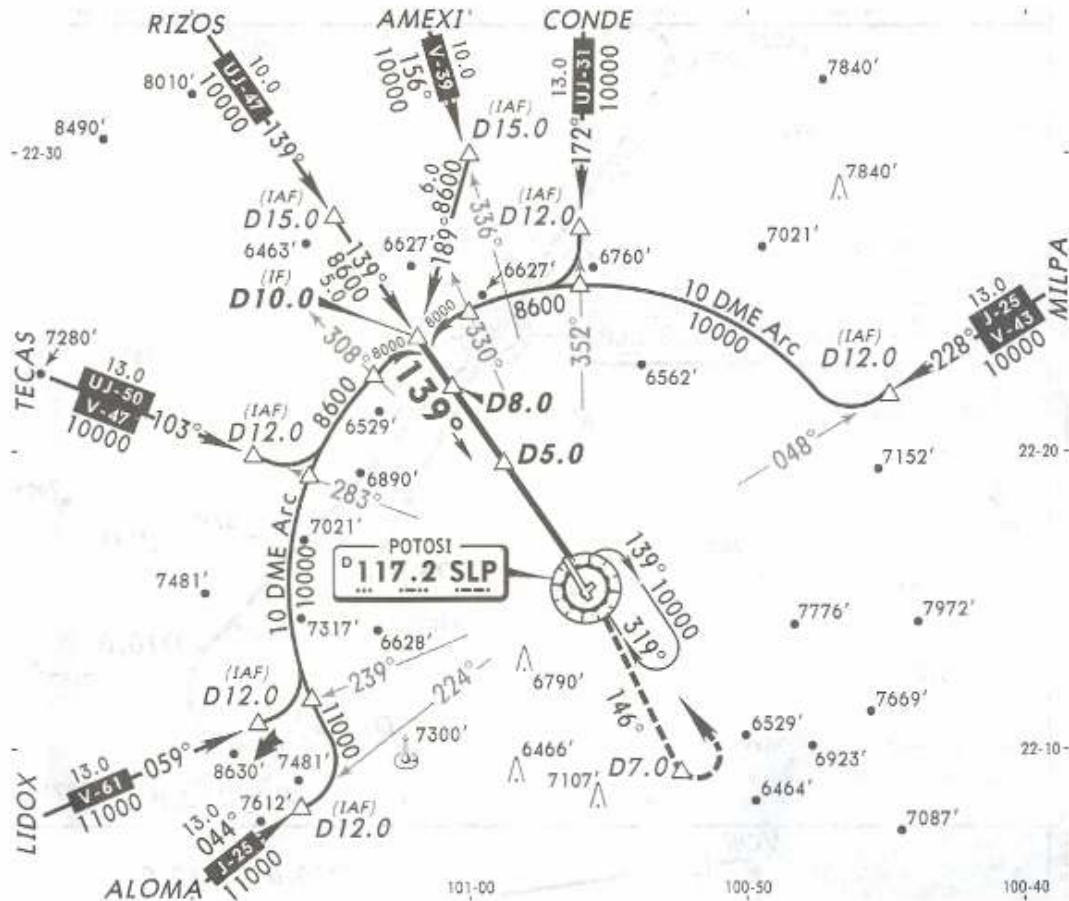
1. In case of DME failure at any point in this procedure maintain last altitude and proceed to the station with instructions from ATC.

POTOSI Approach
118.9

POTOSI Tower
118.9

28 DEC 07

VOR SLP 117.2	Final Apch Crs 139°	Minimum Alt D5.0 7300' (1265')	MDA(H) 6560' (525')	Apt Elev 6035'
-------------------------	-------------------------------	---	-------------------------------	-----------------------



MISSED APCH: Climb outbound on SLP VOR R-146 to D7.0, turn LEFT within 10 NM to SLP VOR to the minimum holding altitude.

Alt Set: MB (IN on req) Apt Elev: 202 MB Trans level: FL 195 Trans alt: 18500'
1. In case of DME failure at any point in this procedure maintain last altitude and proceed to the station with instructions from ATC.

NOT TO BE USED FOR ACTUAL NAVIGATION