

MEXICO CENTER 128.75

ZACATECAS_TWR 118.0

DEPARTURES RWY 02

DEPARTURES
ZACATECAS ONE ALFA

ZACATECAS ONE ALFA

D7 ZCL

022°

202°

10000

Zacatecas
117.6 ZCL
N22 53.1 W102 41.7

NOT TO BE USED FOR
ACTUAL NAVIGATION

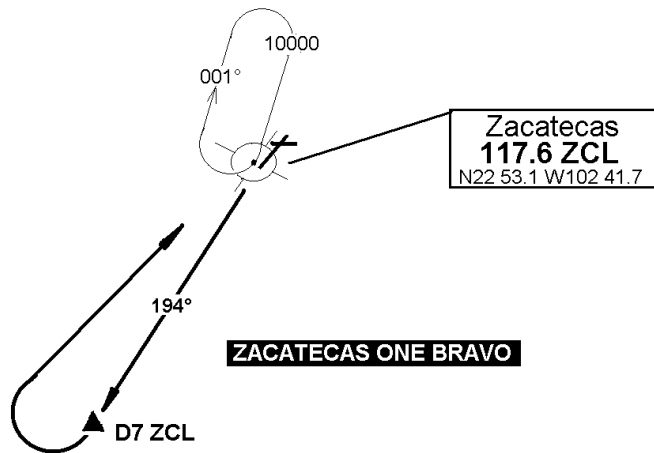
In case DME failure at any point during the procedure, MAINTAIN last altitude and proceed to the station in accordance with ATC instructions.

MEXICO CENTER 128.75

ZACATECAS_TWR 118.0

DEPARTURES RWY 20

DEPARTURES
ZACATECAS ONE BRAVO



NOT TO BE USED FOR
ACTUAL NAVIGATION

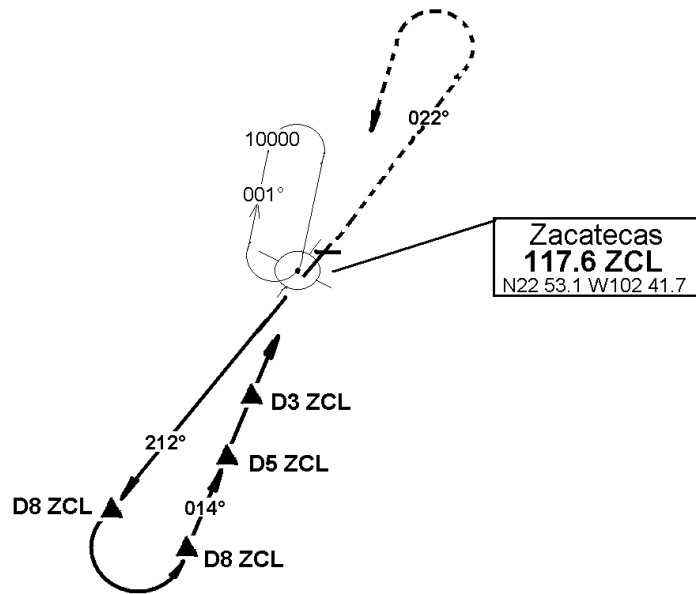
In case DME failure at any point during the procedure, MAINTAIN last altitude and proceeded to the station in accordance with ATC instructions.

MEXICO CENTER 128.75

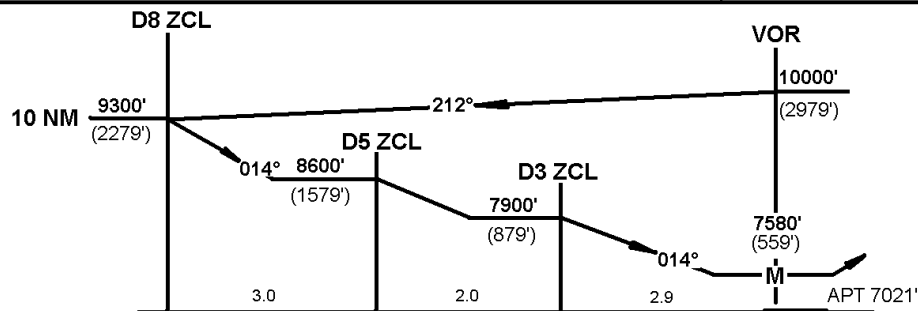
Apt. Elev. 7021'

ZACATECAS_TWR 118.0

VOR DME RWY 02



NOT TO BE USED FOR ACTUAL NAVIGATION



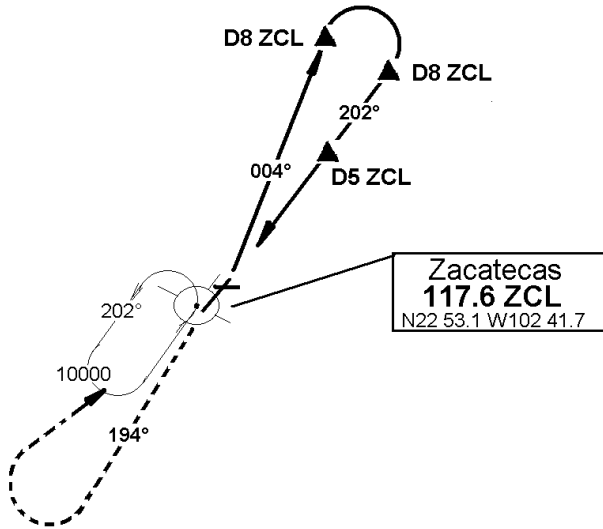
MISSED APPROACH: Climb ZCL VOR R-022° turn LEFT within 10 NM to ZCL VOR at the minimum holding altitude

MEXICO CENTER 128.75

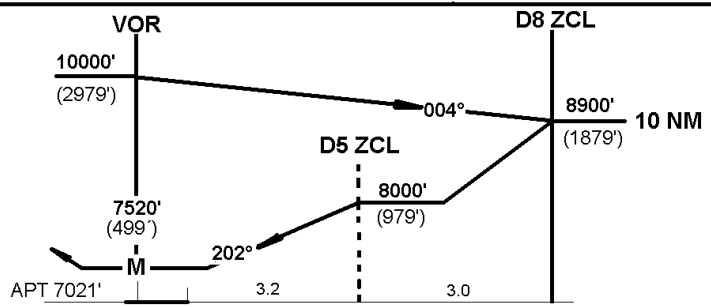
Apt. Elev. 7021'

ZACATECAS_TWR 118.0

VOR DME RWY 20



NOT TO BE USED FOR ACTUAL NAVIGATION



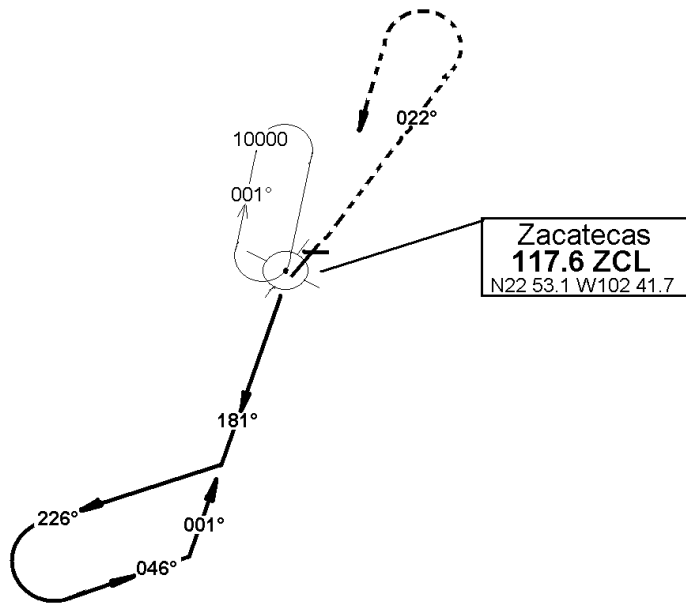
MISSED APPROACH: Climb ZCL VOR R-194°, turn RIGHT within 10 NM to ZCL VOR at the minimum holding altitude

MEXICO CENTER 128.75

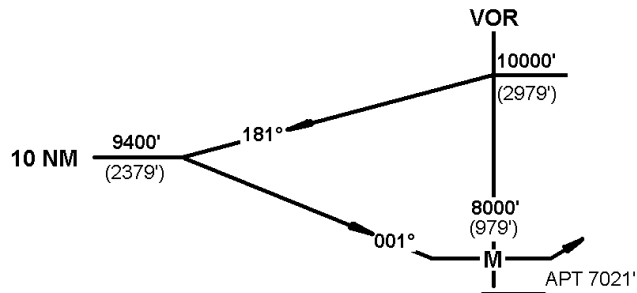
Apt. Elev. 7021'

ZACATECAS_TWR 118.0

VOR RWY 02



NOT TO BE USED FOR ACTUAL NAVIGATION



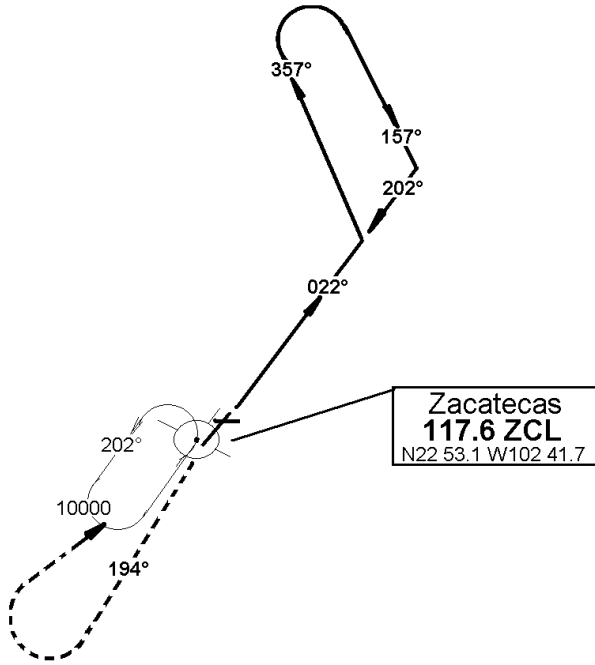
MISSED APPROACH: Climb ZCL VOR R-022° turn LEFT within 10 NM to ZCL VOR at the minimum holding altitude

MEXICO CENTER 128.75

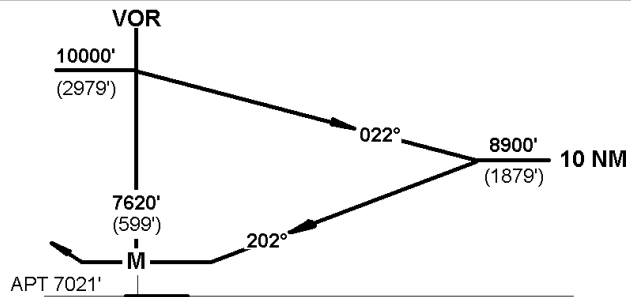
Apt. Elev. 7021'

ZACATECAS_TWR 118.0

VOR RWY 20



NOT TO BE USED FOR ACTUAL NAVIGATION



MISSED APPROACH: Climb ZCL VOR R-194°, turn RIGHT within 10 NM to ZCL VOR at the minimum holding altitude