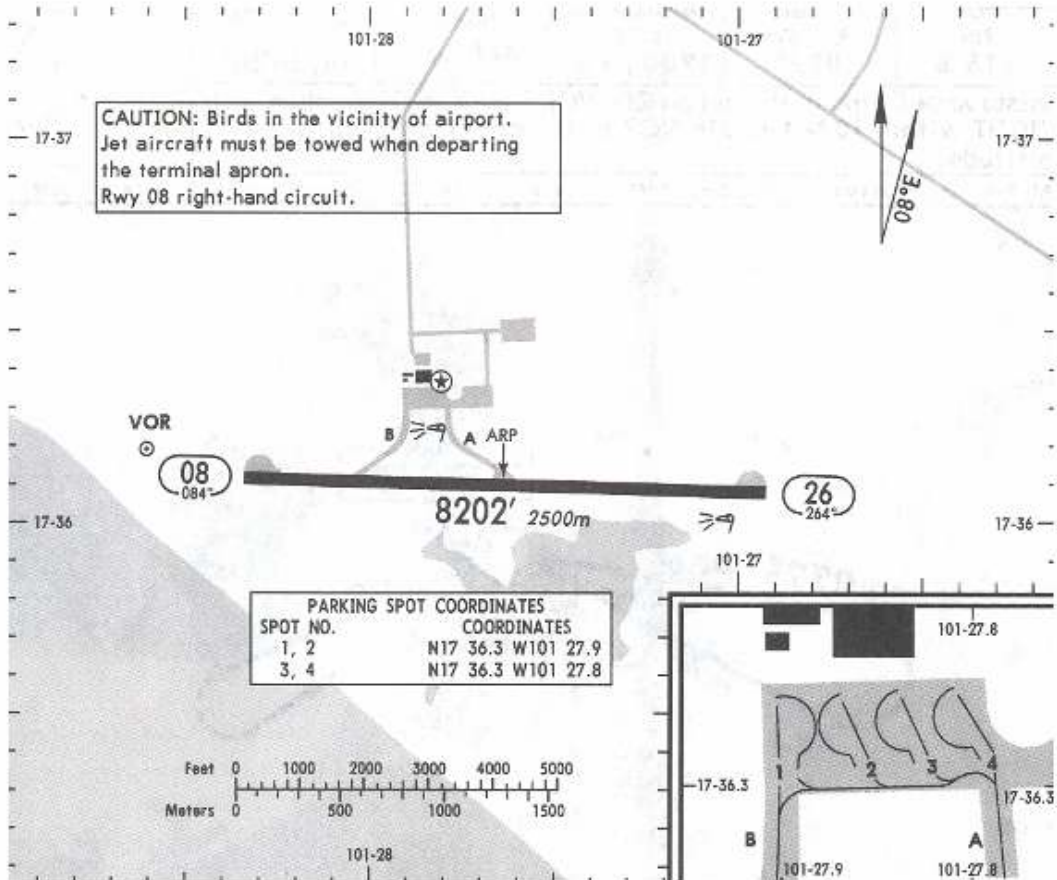


Apt Elev **26'**
N17 36.1 W101 27.6

*ZIHUATANEJO Tower 118.3



RWY	ADDITIONAL RUNWAY INFORMATION				WIDTH
	HIRL PAPI (angle 3.0°)	USABLE LENGTHS		TAKE-OFF	
26		Threshold	Glide Slope		
					60m

NOT TO BE USED FOR ACTUAL NAVIGATION

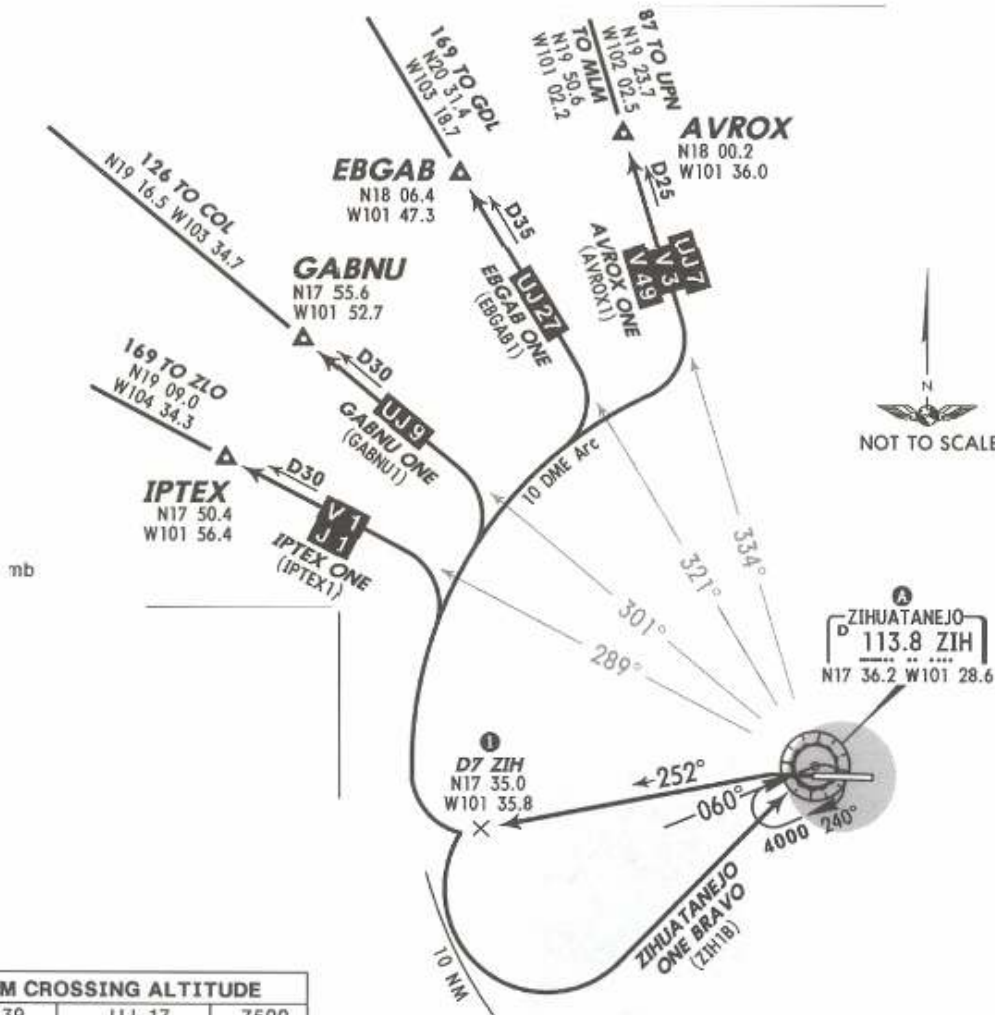
Apt Elev
26'

Trans level: FL195 Trans alt: 18500'

5 MAY 06

DEPARTURES RWY 26

AVROX ONE (AVROX1), EBGAB ONE (EBGAB1), GABNU ONE (GABNU1),
IPTEX ONE (IPTEX1), ZIHUATANEJO ONE BRAVO (ZIH1B)



A MINIMUM CROSSING ALTITUDE			
MLM	V-39	UJ-17	7500
MLM	V-46		7500
MLM	V-49		7100
TEQ	V-24	UJ-24	8000
TEQ	V-11	UJ-24S	8000
ACA	V-1-3	J-1, UJ-9	4800
ZLO	V-1	J-1	4300
UPN	V-3	UJ-7	7100
GDL		UJ-27	7300
COL		UJ-9	4300

B
ZIHUATANEJO ONE BRAVO
Turn LEFT at D7 ZIH (or 1500' in case of DME failure)

SID	INITIAL CLIMB
AVROX ONE EBGAB ONE GABNU ONE IPTEX ONE	Climb via ZIH R-252 to D7 ZIH. Turn RIGHT onto the ZIH 10 DME Arc and intercept the corresponding radial from ZIH to AVROX, EBGAB, GABNU, IPTEX, and continue on the assigned route or in accordance with ATC instructions.
ZIHUATANEJO ONE BRAVO	Climb via ZIH R-252 to D7 ZIH (to 1500' in case of DME failure). Turn LEFT within 10 NM to ZIH. Depart ZIH at the MCA A for the assigned route or in accordance with ATC instructions.

These SIDs require the following minimum climb gradients:
 AVROX ONE: 380' per NM to 9000'.
 EBGAB ONE: 320' per NM to 8000'.
 GABNU ONE and IPTEX ONE: 240' per NM to 3000'.

Gnd speed-KT	75	100	150	200	250	300
240' per NM	300	400	600	800	1000	1200
320' per NM	400	533	800	1067	1333	1600
380' per NM	475	633	950	1267	1583	1900

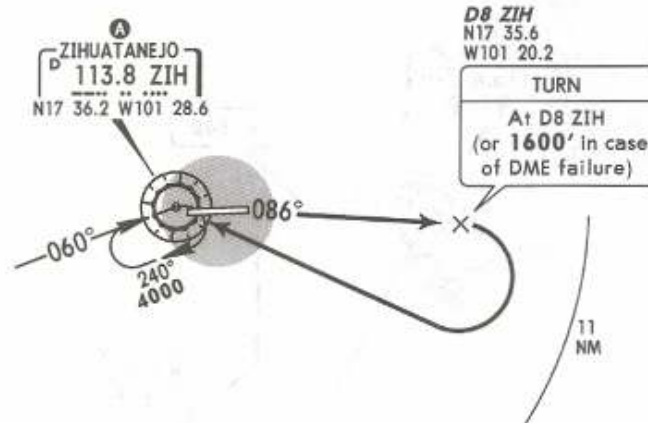
NOT TO BE USED FOR ACTUAL NAVIGATION

Apt Elev
26'

Trans level: FL195 Trans alt: 18500'

5 MAY 06

DEPARTURE ONE RWY 08
ZIHUATANEJO ONE ALFA (ZIH1A)



A MINIMUM CROSSING ALTITUDE			
MLM	V-39	UJ-17	7500
MLM	V-46		7500
MLM	V-49		7100
TEQ	V-24	UJ-24	8000
TEQ	V-11	UJ-24S	8000
ACA	V-1-3	J-1, UJ-9	4800
ZLO	V-1	J-1	4300
UPN	V-3	UJ-7	7100
GDL		UJ-27	7300
COL		UJ-9	4300

This SID requires a minimum climb gradient of 240' per NM to 1000'.

Gnd speed-KT	75	100	150	200	250	300
240' per NM	300	400	600	800	1000	1200

INITIAL CLIMB

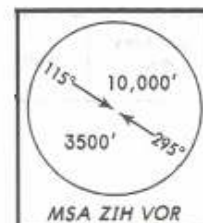
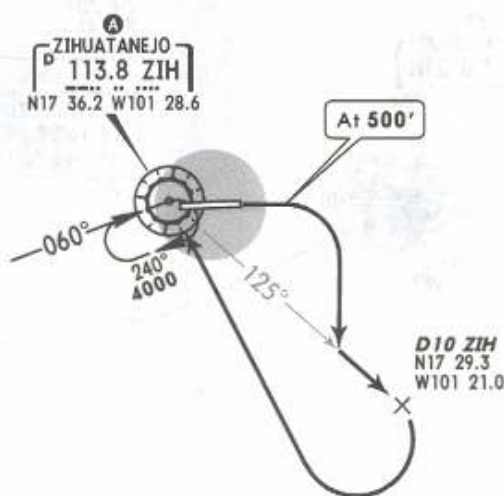
Climb on ZIH R-086 to D8 ZIH (to 1600' in case of DME failure), turn RIGHT within 11 NM to ZIH. Depart ZIH at the MCA A of the assigned route or in accordance with ATC instructions.

NOT TO BE USED FOR ACTUAL NAVIGATION

Apt Elev
26'

Trans level: FL195 Trans alt: 18500'

DEPARTURE TWO RWY 08
ZIHUATANEJO ONE CHARLIE (ZIH1C)



A MINIMUM CROSSING ALTITUDE			
MLM	V-39	UJ-17	7500
MLM	V-46		7500
MLM	V-49		7100
TEQ	V-24	UJ-24	8000
TEQ	V-11	UJ-24S	8000
ACA	V-1-3	J-1, UJ-9	4800
ZLO	V-1	J-1	4300
UPN	V-3	UJ-7	7100
GDL		UJ-27	7300
COL		UJ-9	4300

This SID requires a minimum climb gradient of 240' per NM to 1000'.

Gnd speed-KT	75	100	150	200	250	300
240' per NM	300	400	600	800	1000	1200

INITIAL CLIMB

Climb and **MAINTAIN** runway heading until reaching 500'. Continue climb and intercept ZIH R-125, at D10 ZIH turn **RIGHT** to ZIH. Depart ZIH at the MCA **A** of the assigned route or in accordance with ATC instructions.

NOT TO BE USED FOR ACTUAL NAVIGATION

*ZIHUATANEJO Approach

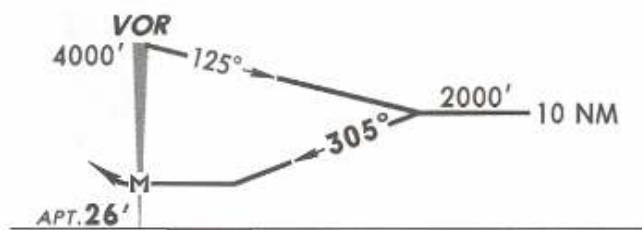
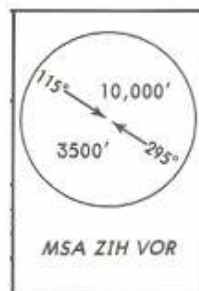
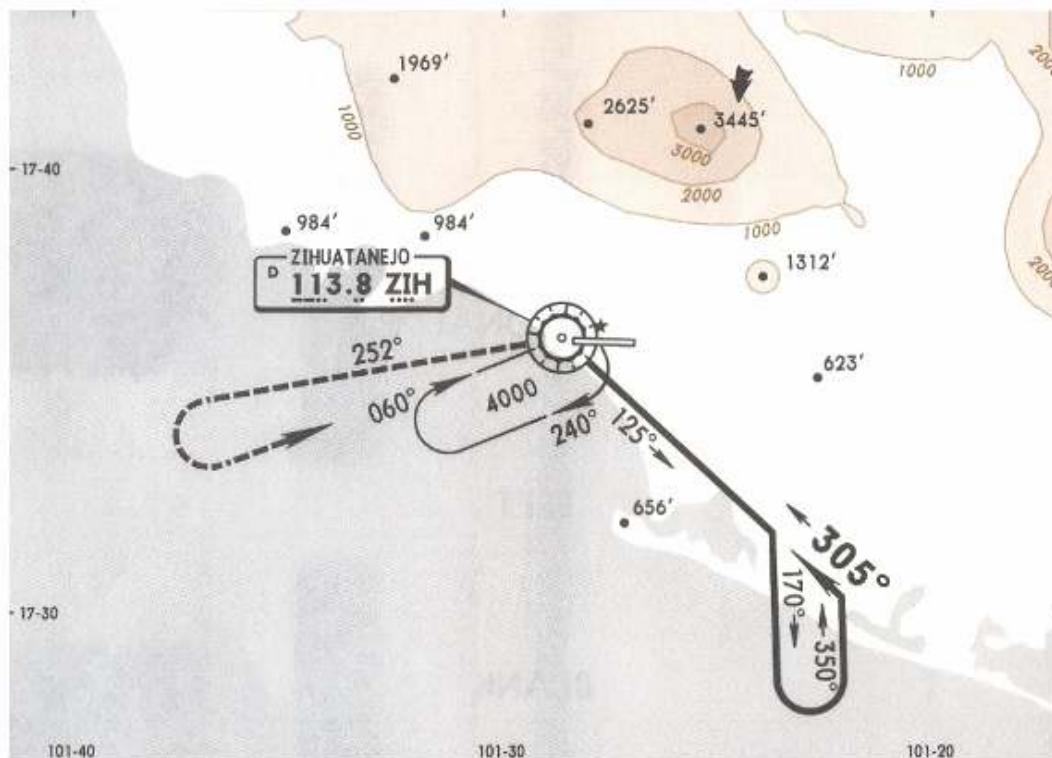
*ZIHUATANEJO Tower

5 MAY 06

121.0

118.3

VOR ZIH 113.8	Final Apch Crs 305°	No FAF	MDA(H) Refer to Minimums	Apt Elev 26'
----------------------------	----------------------------------	--------	--------------------------------	---------------------



MISSED APCH: Climb outbound on ZIH VOR R-252, then turn LEFT within 10 NM to ZIH VOR to the minimum holding altitude.

Max Distance Outbound Leg 7 NM							
Gnd speed-Kts	80	100	120	140	160	180	200
Time	5:15	4:12	3:30	3:00	2:38	2:20	2:06

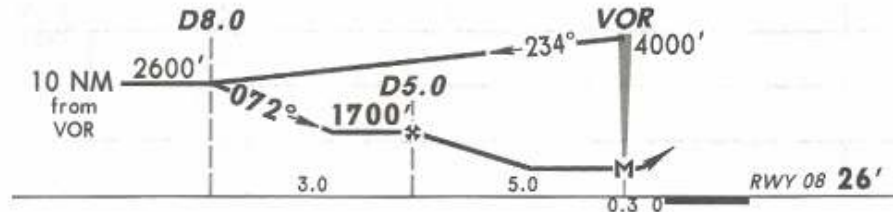
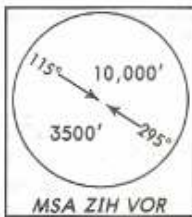
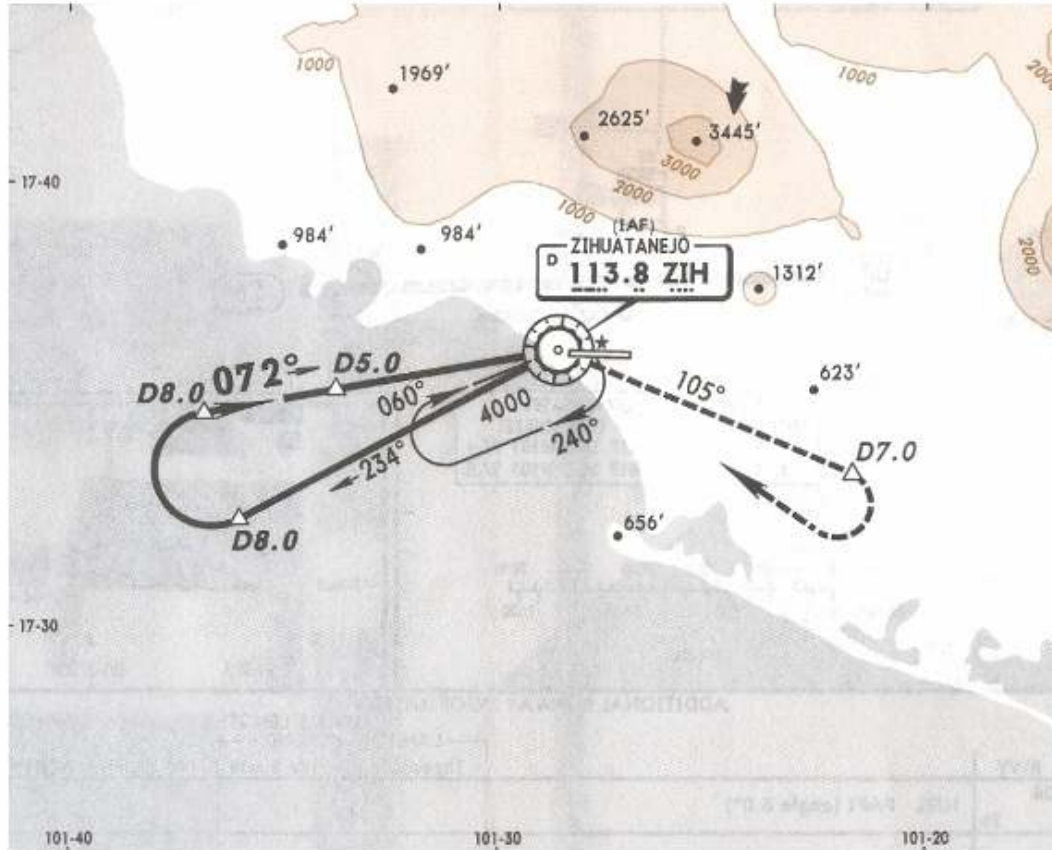
Alt Set: MB (IN on req) Apt Elev: 1 MB Trans level: FL 195 Trans alt: 18500'

NOT TO BE USED FOR ACTUAL NAVIGATION

*ZIHUATANEJO Approach
121.0

*ZIHUATANEJO Tower
118.3

VOR ZIH 113.8	Final Apch Crs 072°	Minimum Alt D5.0 1700' (1674')	MDA(H) 460' (434')	Apt Elev 26' Rwy 08 26'
----------------------------	----------------------------------	---	------------------------------	-----------------------------------



MISSED APCH: Climb outbound on ZIH VOR R-105 to D7.0, then turn RIGHT within 10 NM to ZIH VOR to the minimum holding altitude.

Alt Set: MB (IN on req) Rwy Elev: 1 MB Trans level: FL 195 Trans alt: 18500'

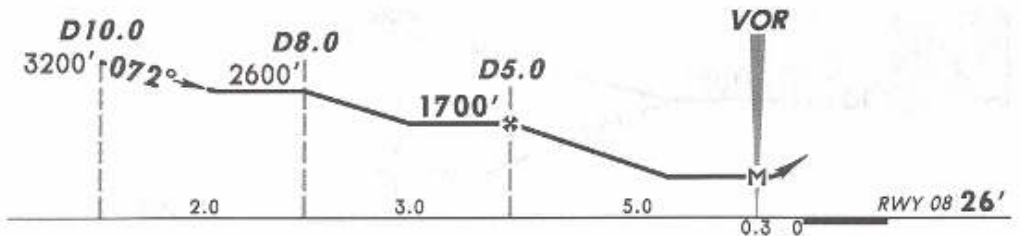
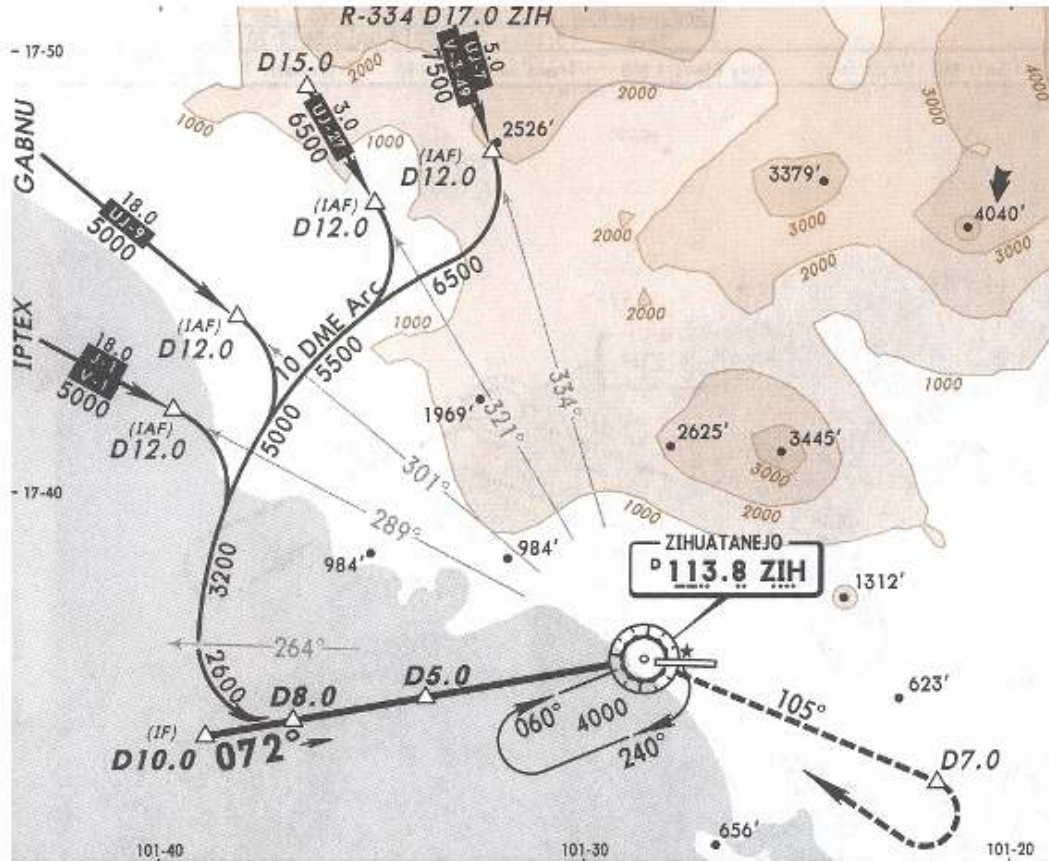
NOT TO BE USED FOR ACTUAL NAVIGATION

*ZIHUATANEJO Approach
121.0

*ZIHUATANEJO Tower
118.3

5 MAY 06

VOR ZIH 113.8	Final Apch Crs 072°	Minimum Alt D5.0 1700' (1674')	MDA(H) 460' (434')	Apt Elev 26' Rwy 08 26'
----------------------------	----------------------------------	---	------------------------------	--



MISSED APCH: Climb outbound on ZIH VOR R-105 to D7.0, then turn RIGHT within 10 NM to ZIH VOR to the minimum holding altitude.

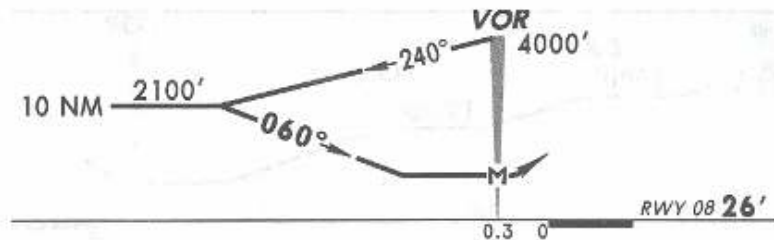
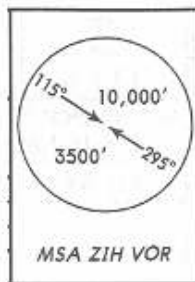
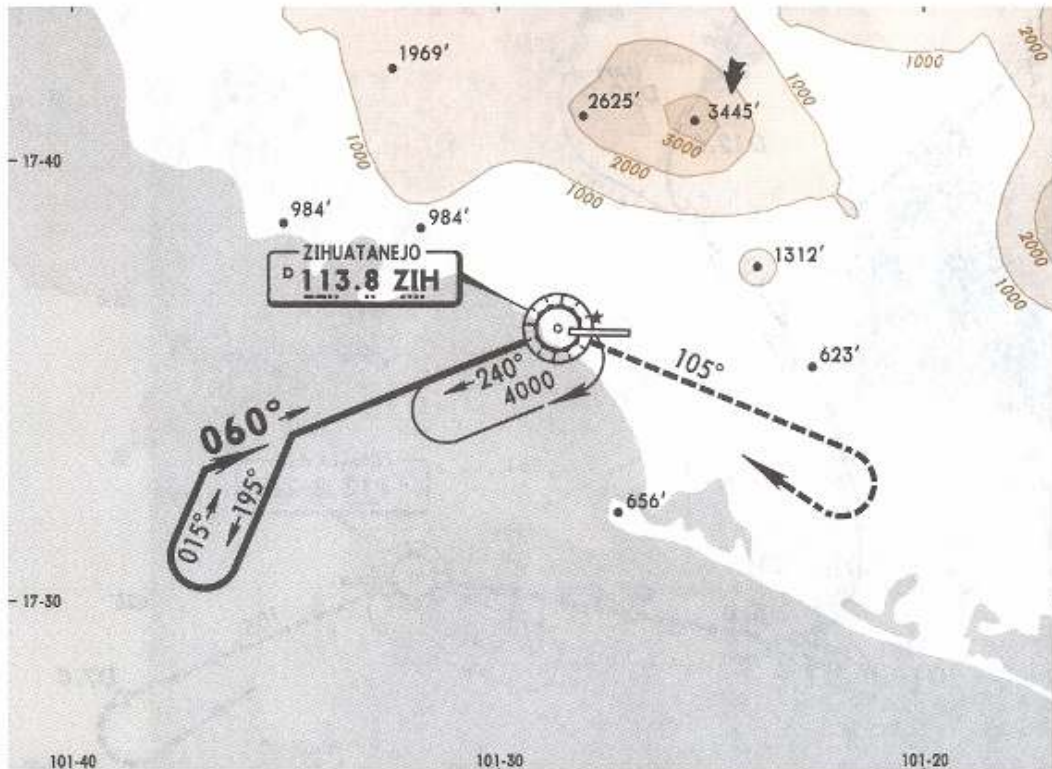
Alt Set: MB (IN on req) Rwy Elev: 1 MB Trans level: FL 195 Trans alt: 18500'

NOT TO BE USED FOR ACTUAL NAVIGATION

*ZIHUATANEJO Approach
121.0

*ZIHUATANEJO Tower
118.3

VOR ZIH 113.8	Final Apch Crs 060°	No FAF	MDA(H) 600' (574')	Apv Elev 26' Rwy 08 26'
----------------------------	----------------------------------	--------	------------------------------	--



MISSED APCH: Climb outbound on ZIH VOR R-105, then turn RIGHT within 10 NM to ZIH VOR to the minimum holding altitude.

Max Distance Outbound Leg 7 NM							
Gnd speed-Kts	80	100	120	140	160	180	200
Time	5:15	4:12	3:30	3:00	2:38	2:20	2:06

Alt Set: MB (IN on req) Rwy Elev: 1 MB Trans level: FL 195 Trans alt: 18500'

NOT TO BE USED FOR ACTUAL NAVIGATION