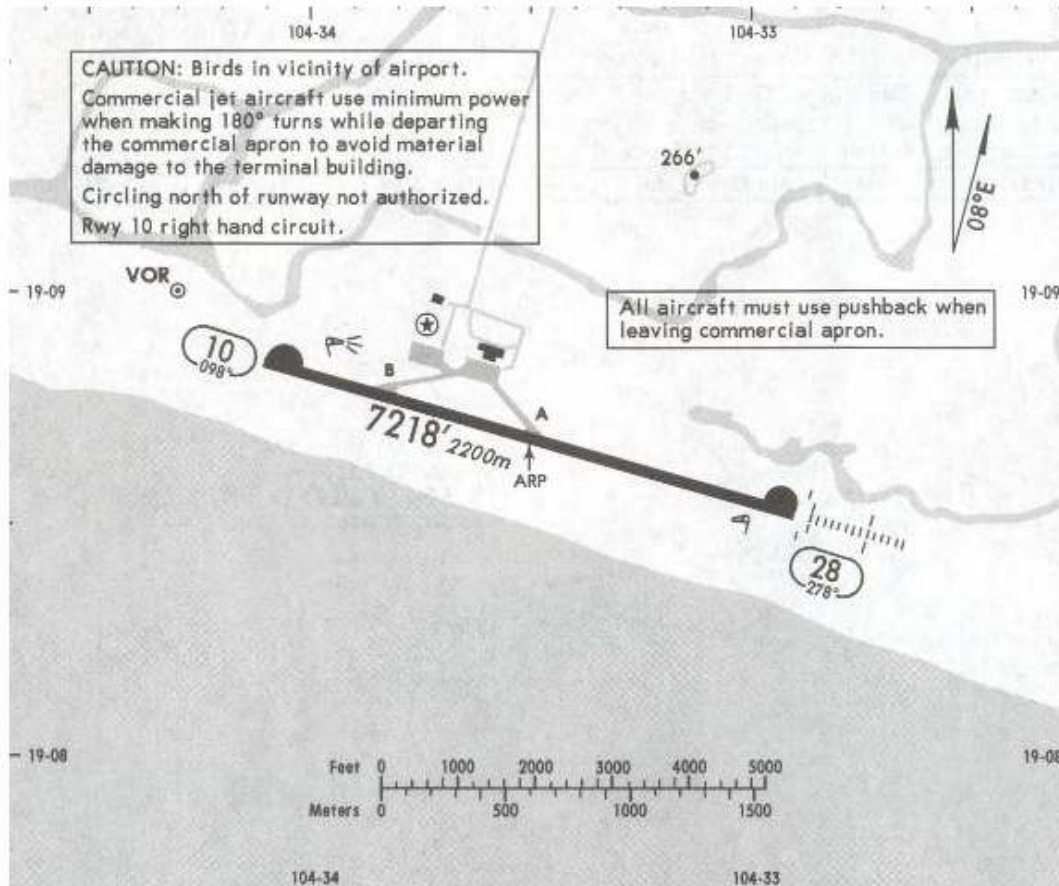


Apt Elev **30'**  
N19 08.7 W104 33.5

\*MANZANILLO Tower 118.7



RWY	ADDITIONAL RUNWAY INFORMATION				WIDTH
	HIRL PAPI-L (angle 3.0°)	USABLE LENGTHS		TAKE-OFF	
HIRL SALS ① PAPI-L (angle 3.0°)		Threshold	LANDING BEYOND Glide Slope		
10	HIRL PAPI-L (angle 3.0°)				148'
28	HIRL SALS ① PAPI-L (angle 3.0°)				45m

NOT TO BE USED FOR ACTUAL NAVIGATION

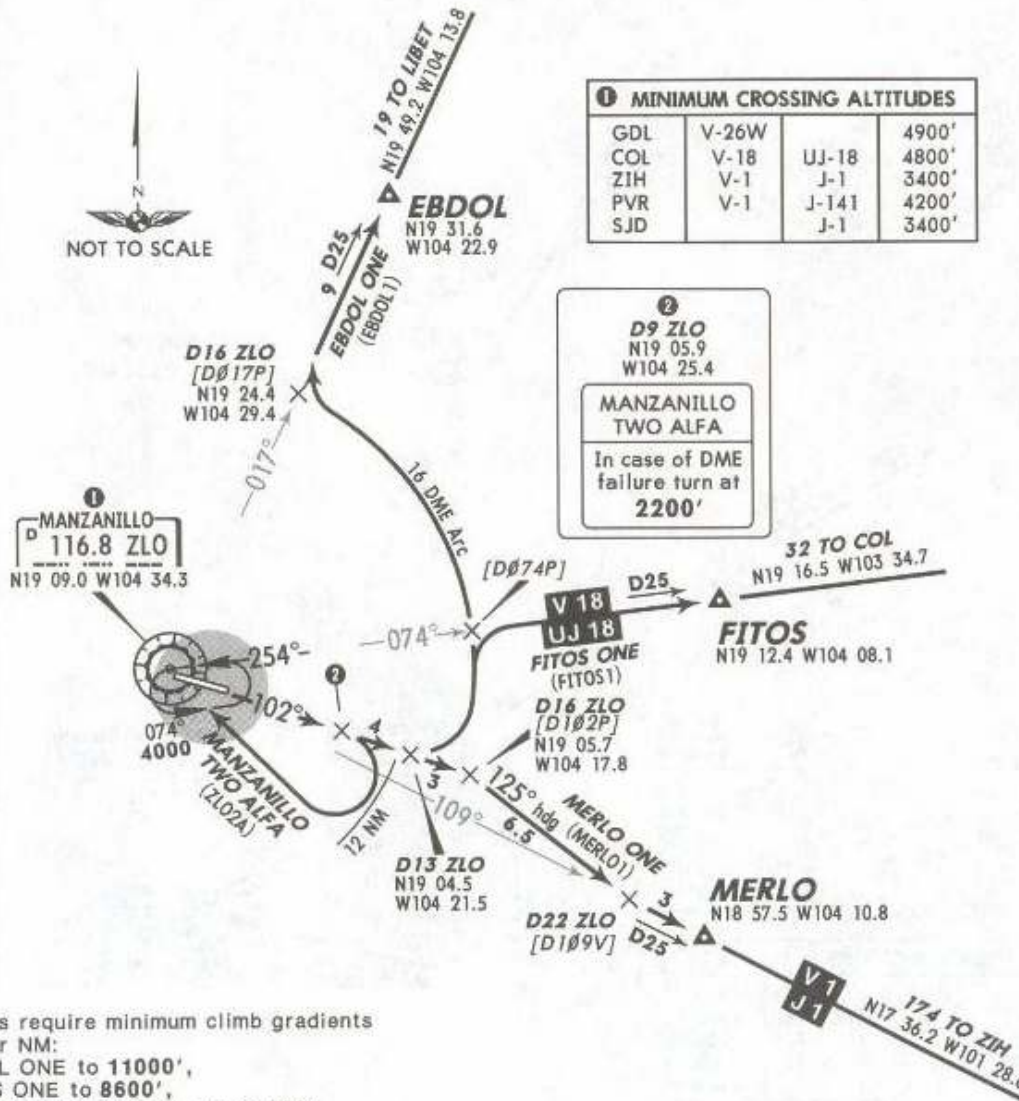
Apt Elev  
30'

Trans level: FL 195 Trans alt: 18500'

14 JAN 05

Eff 20 Jan

**DEPARTURES RWY 10**  
EBDOL ONE (EBDOL1), FITOS ONE (FITOS1),  
MANZANILLO TWO ALFA (ZLO2A), MERLO ONE (MERLO1)



**1 MINIMUM CROSSING ALTITUDES**

GDL	V-26W	UJ-18	4900'
COL	V-18	J-1	4800'
ZIH	V-1	J-141	3400'
PVR	V-1	J-1	4200'
SJD		J-1	3400'



**2**  
D9 ZLO  
N19 05.9  
W104 25.4  
**MANZANILLO TWO ALFA**  
In case of DME failure turn at **2200'**

These SIDs require minimum climb gradients of 280' per NM:  
EBDOL ONE to 11000',  
FITOS ONE to 8600',  
MANZANILLO TWO ALFA to 7000',  
MERLO ONE to 4200'.

Gnd speed-KT	75	100	150	200	250	300
280' per NM	350	467	700	933	1167	1400

SID	ROUTING
EBDOL ONE (EBDOL1), FITOS ONE (FITOS1)	Climb via ZLO R-102 until D13 ZLO, then turn LEFT on the 16 DME ARC to intercept the corresponding radial from ZLO to EBDOL or FITOS and continue on the assigned route, or in accordance with ATC instructions.
MANZANILLO TWO ALFA (ZLO2A)	Climb via ZLO R-102 until D9 ZLO (to 2200' in case of DME failure). Turn RIGHT within 12 NM to ZLO crossing at the MCA 1 for the assigned route, or in accordance with ATC instructions.
MERLO ONE (MERLO1)	Climb via ZLO R-102 until D16 ZLO, then turn RIGHT heading 125° to intercept ZLO R-109 to MERLO and continue on the assigned route, or in accordance with ATC instructions.

NOT TO BE USED FOR ACTUAL NAVIGATION

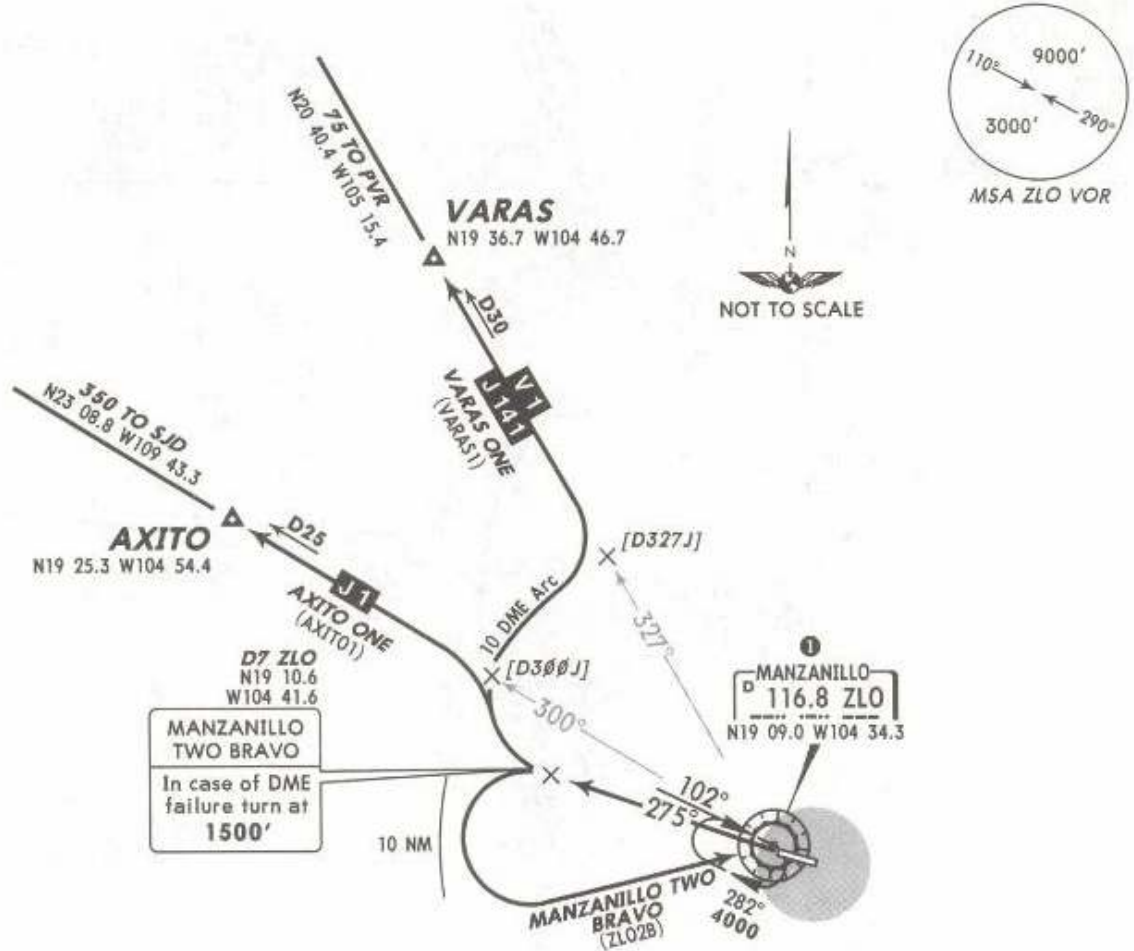
Apt Elev  
30'

Trans level: FL 195 Trans alt: 18500'

14 JAN 05

Eff 20 Jan

**DEPARTURES RWY 28**  
AXITO ONE (AXITO1), MANZANILLO TWO BRAVO (ZLO2B),  
VARAS ONE (VARAS1)



These SIDs require minimum climb gradients of:  
AXITO ONE: 220' per NM to 4000'.  
VARAS ONE: 260' per NM to 6000'.

Gnd speed-KT	75	100	150	200	250	300
220' per NM	275	367	550	733	917	1100
260' per NM	325	433	650	867	1083	1300

① MINIMUM CROSSING ALTITUDES			
GDL	V-26W		4900'
COL	V-18	UJ-18	4800'
ZIH	V-1	J-1	3400'
PVR	V-1	J-141	4200'
SJD		J-1	3400'

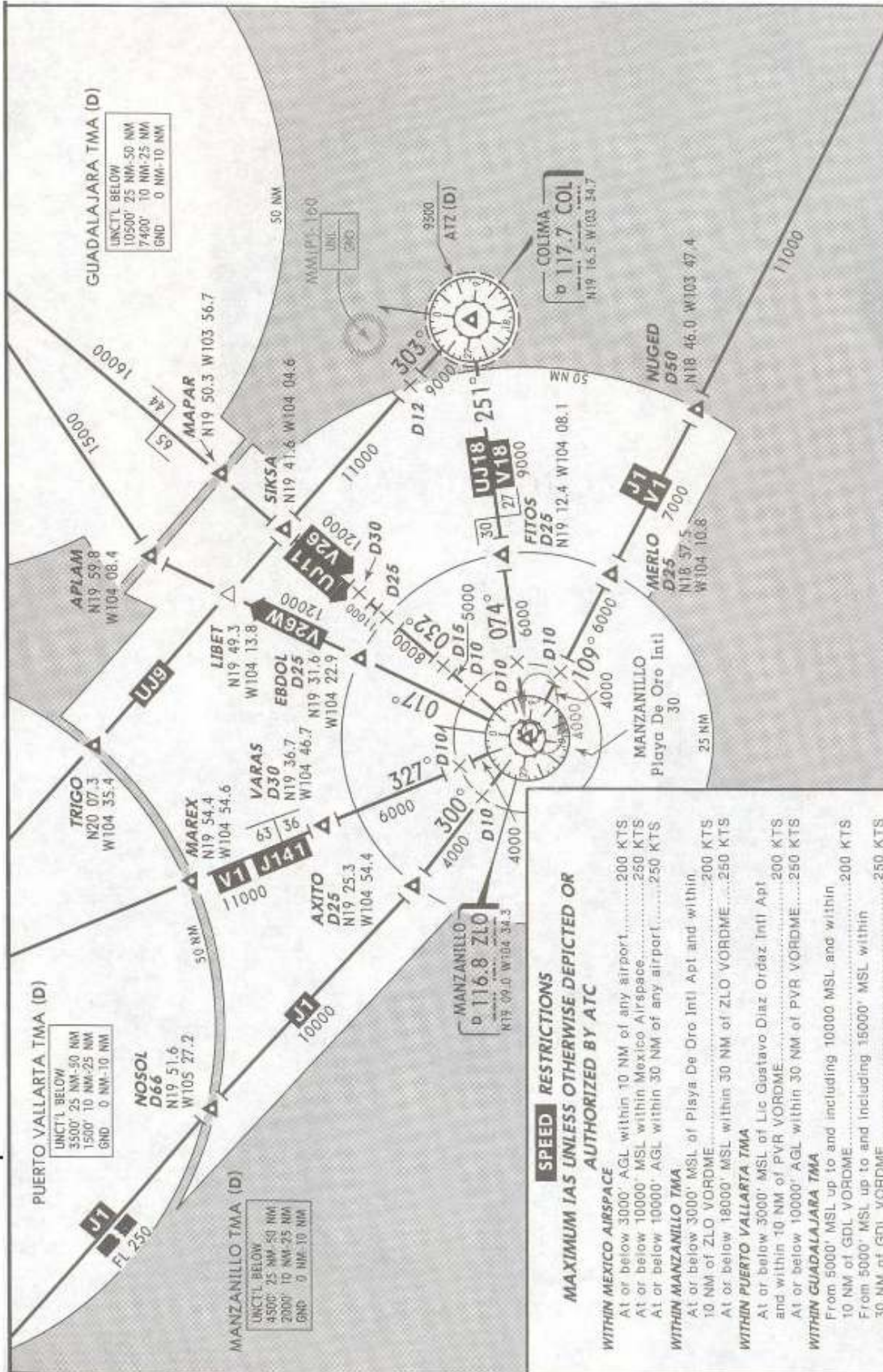
① MINIMUM CROSSING ALTITUDES			
GDL	V-26W		4900'
COL	V-18	UJ-18	4800'
ZIH	V-1	J-1	3400'
PVR	V-1	J-141	4200'
SJD		J-1	3400'

SID	ROUTING
AXITO ONE (AXITO1), VARAS ONE (VARAS1)	Climb via ZLO R-275 until D7 ZLO, then turn RIGHT on the 10 DME ARC and intercept the corresponding radial from ZLO to AXITO or VARAS and continue on the assigned route, or in accordance with ATC instructions.
MANZANILLO TWO BRAVO (ZLO2B)	Climb via ZLO R-275 until D7 ZLO (to 1500' in case of DME failure). Turn LEFT within 10 NM to ZLO crossing at the MCA ① for the assigned route, or in accordance with ATC instructions.

NOT TO BE USED FOR ACTUAL NAVIGATION

\*MANZANILLO Approach  
**118.7**

2 MAY 08



NOT TO BE USED FOR ACTUAL NAVIGATION

\*MANZANILLO Approach

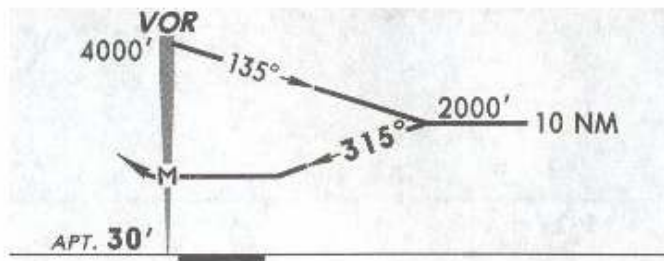
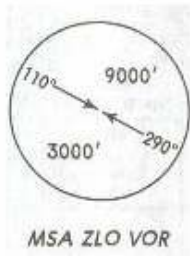
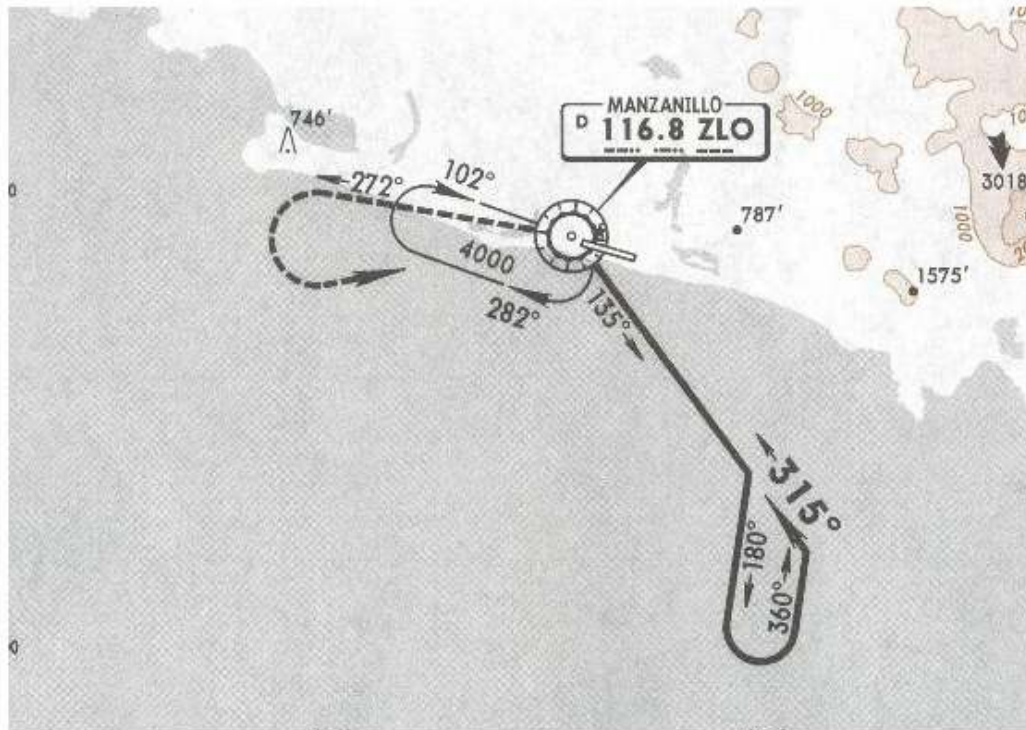
\*MANZANILLO Tower

29 JUL 05

118.7

118.7

VOR ZLO <b>116.8</b>	Final Apch Crs <b>315°</b>	No FAF	MDA(H) Refer to Minimums	Apt Elev <b>30'</b>
----------------------------	----------------------------------	--------	--------------------------------	---------------------



**MISSED APCH:** Climb outbound on ZLO VOR R-272 and proceed with a LEFT teardrop turn within 10 NM to ZLO VOR at the minimum holding altitude.

Gnd Speed-Kts	MAX TIME TO TURN						
	80	100	120	140	160	180	200
7 NM to turn	5:15	4:12	3:30	3:00	2:38	2:20	2:06

Alt Set: MB (IN on req) Apt Elev: 1 MB Trans level: FL 195 Trans alt: 18500'

NOT TO BE USED FOR ACTUAL NAVIGATION

\*MANZANILLO Approach

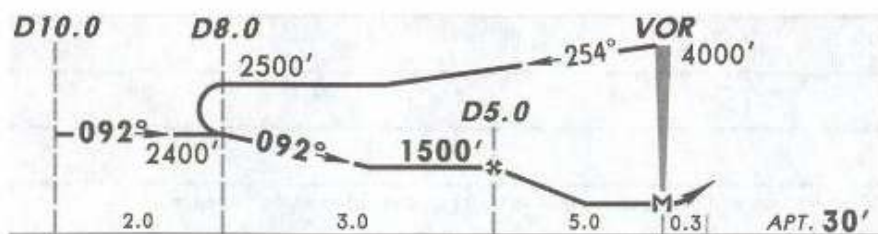
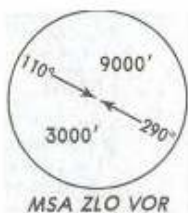
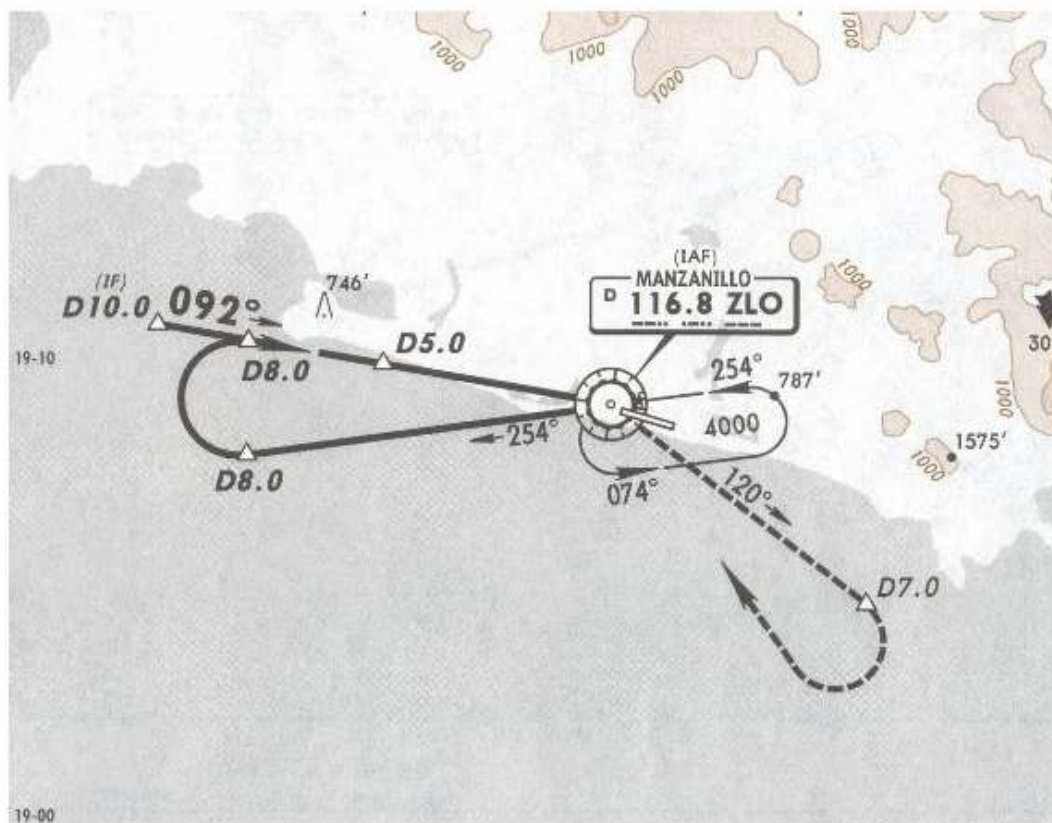
\*MANZANILLO Tower

29 JUL 05

118.7

118.7

VOR ZLO <b>116.8</b>	Final Apch Crs <b>092°</b>	Minimum Alt D5.0 <b>1500'</b> (1470')	MDA(H) <b>500'</b> (470')	Apt Elev <b>30'</b>
----------------------------	----------------------------------	---	------------------------------	---------------------



**MISSED APCH:** Climbing RIGHT turn to intercept ZLO VOR R-120 to D7.0, and proceed with a teardrop turn to the RIGHT within 10 NM to ZLO VOR at the minimum holding altitude.

Alt Set: MB (IN on req) Apt Elev: 1 MB Trans level: FL 195 Trans alt: 18500'

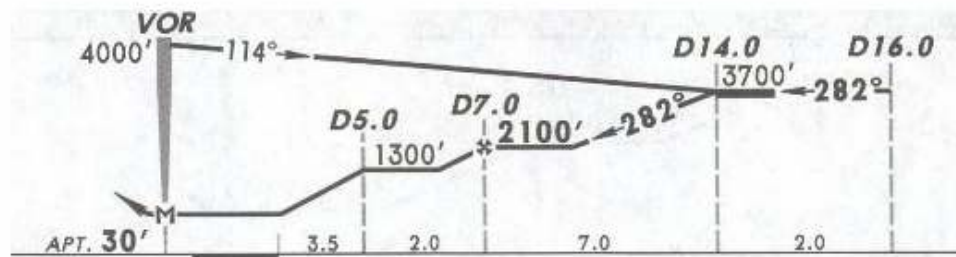
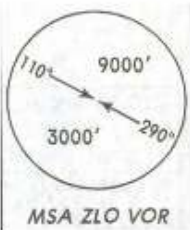
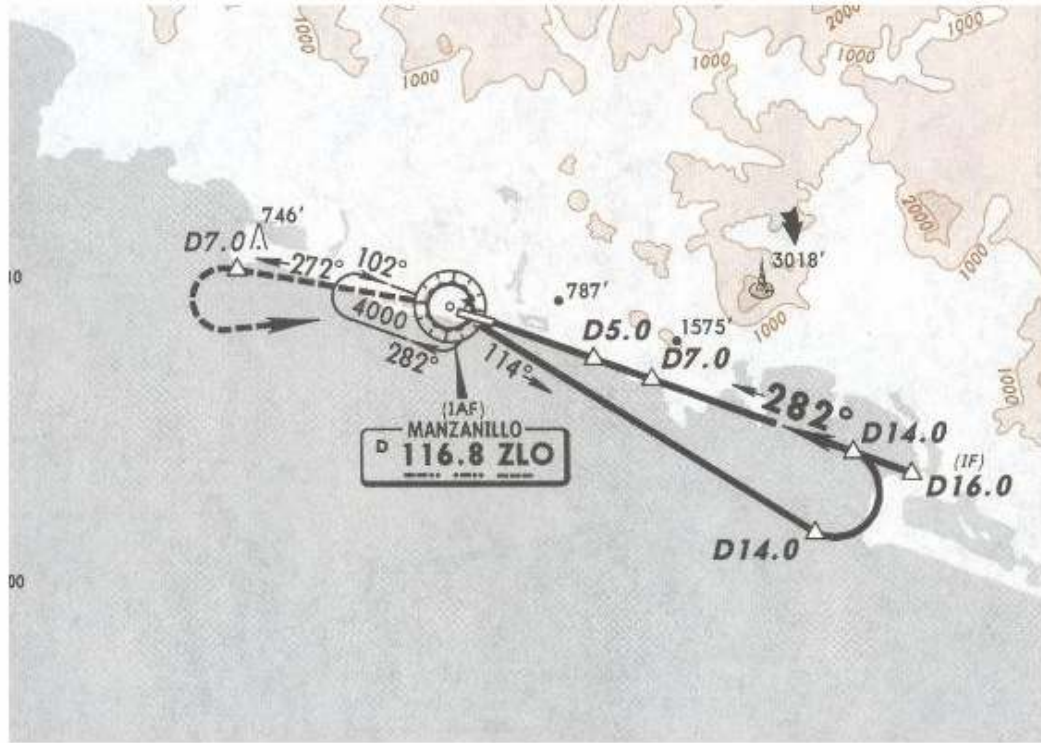
NOT TO BE USED FOR ACTUAL NAVIGATION

\*MANZANILLO Approach  
118.7

\*MANZANILLO Tower  
118.7

29 JUL 05

VOR ZLO <b>116.8</b>	Final Apch Crs <b>282°</b>	Minimum Alt D7.0 <b>2100'</b> (2070')	MDA(H) <b>920'</b> (890')	Apt Elev <b>30'</b>
----------------------------	----------------------------------	---	------------------------------	---------------------



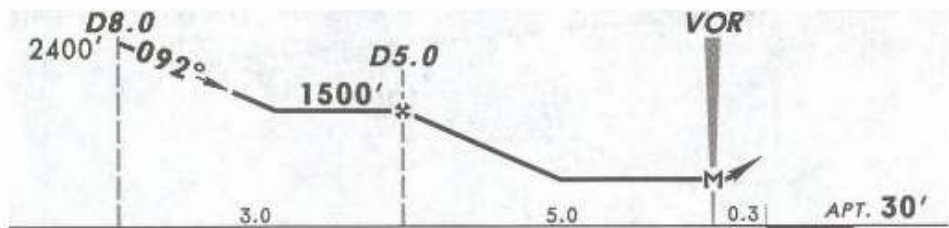
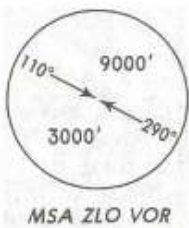
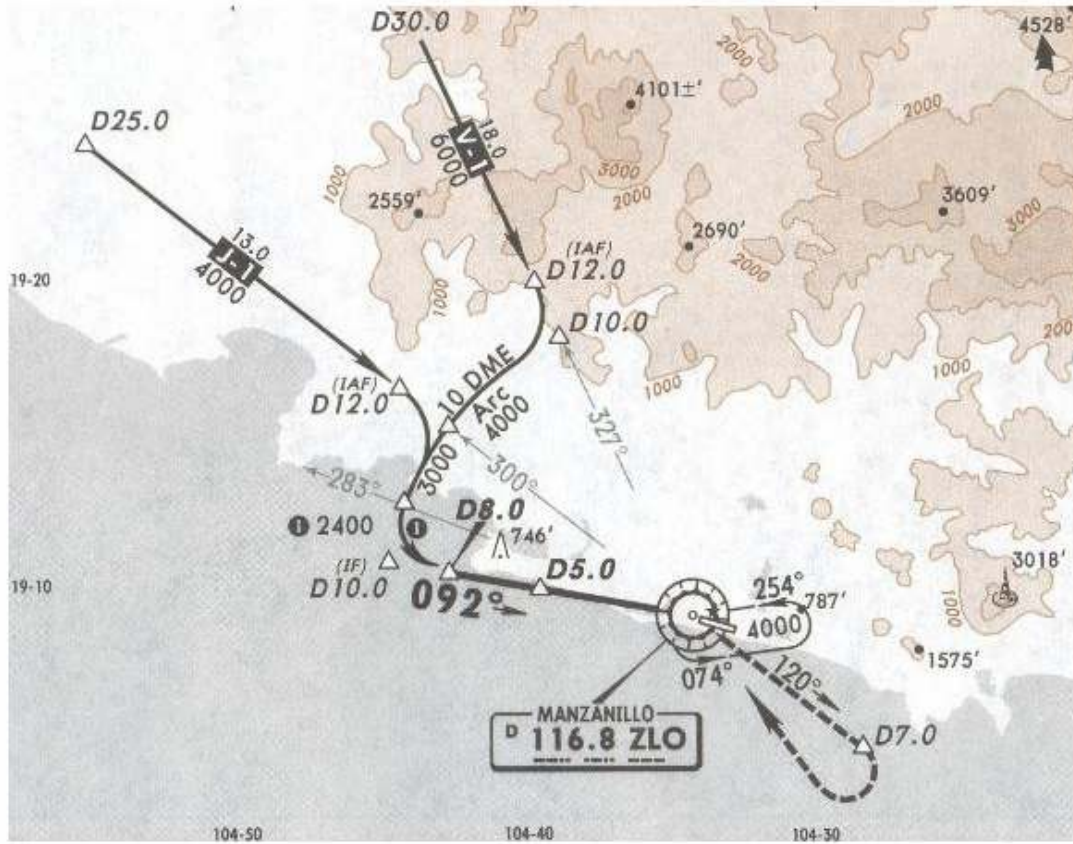
**MISSED APCH:** Climb outbound on ZLO VOR R-272 to D7.0, then proceed with a LEFT teardrop turn within 10 NM to ZLO VOR at the minimum holding altitude.

Alt Set: MB (IN on req) Apt Elev: 1 MB Trans level: FL 195 Trans alt: 18500'  
 1. During night operations if the PAPI system for Rwy 28 fails, the preferred approach is to Rwy 10.

\*MANZANILLO Approach  
118.7

\*MANZANILLO Tower  
118.7

VOR ZLO <b>116.8</b>	Final Apch Crs <b>092°</b>	Minimum Alt D5.0 <b>1500'</b> (1470')	MDA(H) <b>500'</b> (470')	Apt Elev <b>30'</b>
----------------------------	----------------------------------	---	------------------------------	---------------------



**MISSED APCH:** Climbing RIGHT turn to intercept ZLO VOR R-120 to D7.0 and proceed with a teardrop turn to the RIGHT within 10 NM to ZLO VOR at the minimum holding altitude.

Alt Set: MB (IN on req) Apt Elev: 1 MB Trans level: FL 195 Trans alt: 18500'  
1. In case of DME failure at any point during the procedure, maintain last altitude and proceed to the station in accordance with ATC instructions.

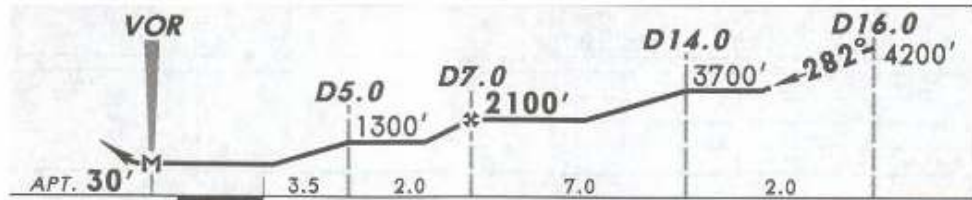
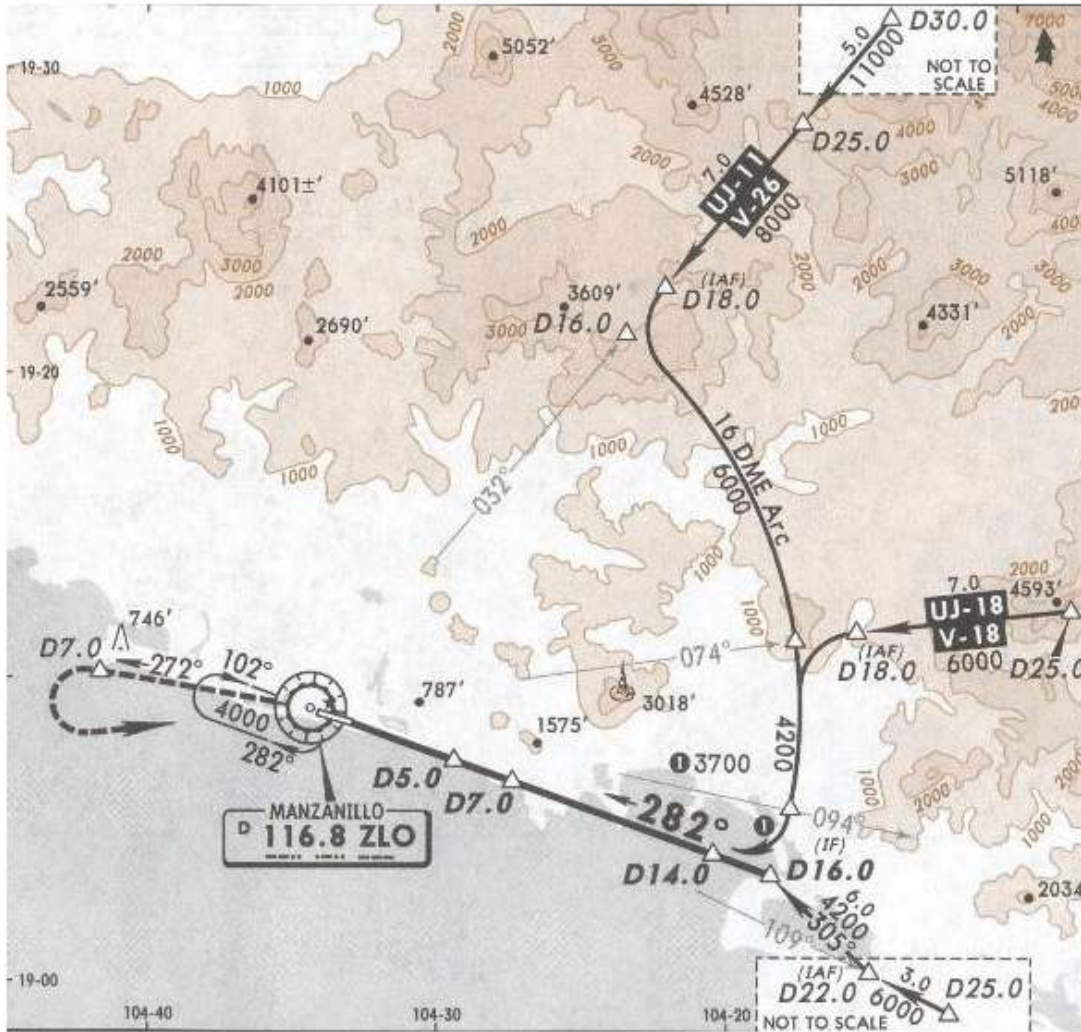


\*MANZANILLO Approach  
118.7

\*MANZANILLO Tower  
118.7

29 JUL 05

VOR ZLO <b>116.8</b>	Final Apch Crs <b>282°</b>	Minimum Alt D7.0 <b>2100'</b> (2070')	MDA(H) <b>920'</b> (890')	Apt Elev <b>30'</b>
----------------------------	----------------------------------	---	------------------------------	---------------------



**MISSED APCH:** Climb outbound on ZLO VOR R-272 to D7.0, then proceed with a LEFT teardrop turn within 10 NM to ZLO VOR at the minimum holding altitude.

Alt Set: MB (IN on req) Apt Elev: 1 MB Trans level: FL 195 Trans alt: 18500'  
 1. During night operations, if the PAPI system for Rwy 28 fails, the preferred approach is to Rwy 10. 2. In case of DME failure at any point during the procedure, maintain last altitude and proceed to the station in accordance with ATC instructions.

NOT TO BE USED FOR ACTUAL NAVIGATION